

# Converting Colors

Decimal(14067101)

Have a look what the booklet for  
Decimal(14067101) contains.

<b>Decimal(14067101)</b> .....	3
<i><b>Conversions</b></i> .....	4
<i><b>Details</b></i> .....	6
<i><b>Harmonies</b></i> .....	11
<i><b>Previews</b></i> .....	23
<i><b>Color Blindness Simulation</b></i> .....	26
<i><b>CSS Examples</b></i> .....	29

# **Color**

**Decimal(14067101)**

# Conversions

## Conversions Part 1

Format	Color
Hex	D6A59D
RGB	214, 165, 157
RGB Percent	84%, 65%, 62%
CMY	0.1608, 0.3529, 0.3843
CMYK	0.00, 0.23, 0.27, 0.16
HSL	8°, 41%, 73%
HSV	8°, 27%, 84%
XYZ	47.2725, 43.6407, 37.8303
YIQ	178.7390, 31.7720, 7.9000

# Conversions

## Conversions Part 2

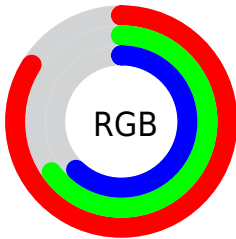
Format	Color
<a href="#">RYB</a>	<a href="#">214, 166, 157</a>
Decimal	<a href="#">14067101</a>
CIELab	<a href="#">71.99, 16.89, 11.10</a>
CIELCh	<a href="#">72, 20.214, 33.312</a>
Yxy	<a href="#">43.6407, 0.3672, 0.3390</a>
Android (android.graphics.Color)	<a href="#">4292257181 (0xFFD6A59D)</a>
YUV	<a href="#">178.7390, -10.7173, 30.9239</a>
Hunter-Lab	<a href="#">66.0611, 12.1253, 12.2901</a>

# Details

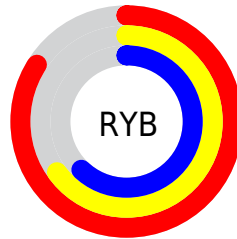
The Decimal color **14067101** is a light color, and the websafe version is hex **CC9999**. A complement of this color would be **10342102**, and the grayscale version is **11776947**.

A 20% lighter version of the original color is **16768212**, and **10383722** is the 20% darker color. If you saturate the color by 10%, you get **14062472**, and if you desaturate by 10%, it is **14071730**.

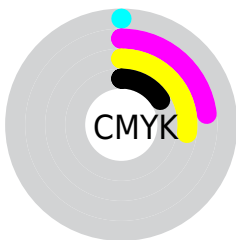
# Distribution



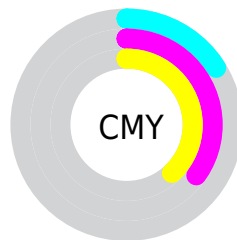
- Red (84%)
- Green (65%)
- Blue (62%)



- Red (84%)
- Yellow (65%)
- Blue (62%)



- Cyan (0%)
- Magenta (23%)
- Yellow (27%)
- Black (16%)



- Cyan (16%)
- Magenta (35%)
- Yellow (38%)

# Brightness & Saturation Gradients

These gradients show how the Decimal color 14067101 changes by changing the brightness by 10 percent. The first figure shows a shift by +10% for each color and the second figure -10%.

Similar to the brightness gradients but the following saturation gradients show a change of the Decimal color 14067101 by changing the saturation by 10% instead.



 14067101

 14067101

16777215

 12225411

 16768212

 10383722

 16775664

 8607826

 6897979

 5253669

 3675408

 2293760

 0

 14067101

 14067101

 14062472

 14071730

 14057586

 14076616

 14052957

 14081245

 14048071

 14086131

 14043442

 14090239

 14038813

 14033927

 14032384

# Harmonies

## Analogous

The Analogous color harmony consists of three colors that are next to each other on the color wheel.



14001071



14067101



13478544

# Triad

The Triadic color harmony groups three colors that are evenly spaced from another and form a triangle on the color wheel.



14067101



9681311



10400213

# Complementary

The Complementary color scheme is a pair of colors which are on the opposite of each other on the color wheel.



14067101



10342102

# Split Complementary

Split-complementary colors differ from the complementary color scheme. The scheme consists of three colors, the original color and two neighbors of the complement color.



8959953



14067101



8633266

# Square

The Square scheme is like the rectangle color scheme, but the four colors are evenly spaced on the color wheel.



14067101



11056529



8305348



11971535

# Rectangle

The Rectangle color scheme consists of four colors that form a rectangle on the color wheel.



14067101



12824204



8305348



9876437

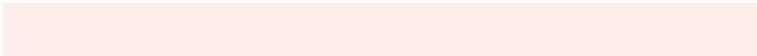


# Sweetspot

The Sweet Spot groups the original color and five complimentary colors.



14067101



16772587



14065102



8418675



0



8421504



# Same Dimension

The Same Dimension uses a secret algorithm to generate beautiful new colors.



14067101



16759213



14074269



7037536



11212800



2819584



# Inverse Universe

The Inverse Universe completely reimagines the original color for something new.



10342102



11400447



10334934



6318699



37803



9515



# Previews

## White Background



This preview shows how the Decimal color 14067101 looks on a white background.

## Color Contrast Check

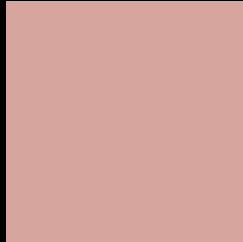
Large Text (above 18pt) WCAG AA × Fail

Any Text WCAG AA × Fail

Large Text (above 18pt) WCAG AAA × Fail

Any Text WCAG AAA × Fail

# Black Background



This preview shows how the Decimal color 14067101 looks on a black background.

## Color Contrast Check

Large Text (above 18pt) WCAG AA ✓ Pass

Any Text WCAG AA ✓ Pass

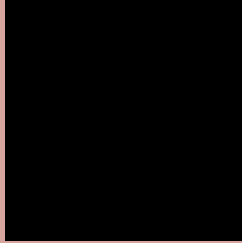
Large Text (above 18pt) WCAG AAA ✓ Pass

Any Text WCAG AAA ✓ Pass

If you want to check with other color combinations, try the [Color Contrast Checker](#).



## Decimal 14067101 Background



This preview shows how black text looks on a background with the Decimal color 14067101.




This preview shows how white text looks on a background with the Decimal color 14067101.

# Color Blindness Simulation

Color vision deficiency is a very complex topic, and I could not describe the different causes any better than Wikipedia does, so if you want to learn more, you should check out their [article about color blindness](#).

## Dichromacy





**Tritanopia**  
14197423

# Trichromacy



**Original Color**  
14067101

**Protanomaly**  
12758177

**Deuteranomaly**  
13543580

**Tritanomaly**  
14132136

# Monochromacy



**Original Color**  
14067101

**Achromatopsia**  
11776947

**Achromatomaly**  
12627627

# CSS Examples

## Text

The CSS property to change the color of the text to Decimal 14067101 is called "color". The color property can be set on classes, ids or directly on the HTML element.

This example shows how text in the color #D6A59D looks like.

```
.text, #text, p{  
    color:#D6A59D  
}
```

If you want to add a text shadow in that color use the text-shadow property, you can generate a text shadow directly with our [CSS Text Shadow Generator](#).

Here you see how black text with a 4 pixel #D6A59D colored shadow looks like.

```
.shadow{ text-shadow: 4px 4px 2px #D6A59D
}
```

## Border

The CSS property to change the border of an element to Decimal 14067101 is called "border". The border property can be set on classes, ids or directly on the HTML element.

This example shows the color as border, it can be applied via the CSS property "border" or "border-color".

```
.border, #border, table{ border:4px solid
#D6A59D }
```

If only the border color should be changed use the property `border-color`.

```
.border{ border-color:#D6A59D }
```

If you want to add a box shadow in that color use:

Here you see how a box with a 4 pixel #D6A59D colored shadow looks like.

```
.boxshadow{ -moz-box-shadow:4px 4px 4px  
4px #D6A59D; -webkit-box-shadow:4px 4px  
4px 4px #D6A59D; box-shadow:4px 4px 4px  
4px #D6A59D }
```

# Background

The CSS property to change the background color of an element to Decimal 14067101 is called "background". The background property can be set on classes, ids or directly on the HTML element.

```
.background, #background, body{  
background:#D6A59D }
```

If only the background color should be changed can be used:

```
.background{ background-color:#D6A59D }
```

This example shows the color as background, it is applied via the CSS property "background".

To optimize and compress your CSS code, you can use our [online CSS compressor and optimizer](#) based on csstidy. If you want to create a linear or radial gradient as background or border, check our [CSS Gradient Generator](#).



Hey! You found this booklet interesting? Support Converting Colors with the new Membership Option!

The pro membership hides all ads, plus gives you double the colors in the color bucket, and more awesome pro features!

**[Learn more, Memberships starting at \\$2.50/m!](#)**

**Follow me  
on Twitter!**

@ConvertingColor