

# Converting Colors

Decimal(14068397)

Have a look what the booklet for  
Decimal(14068397) contains.

<b>Decimal(14068397)</b> .....	3
<i><b>Conversions</b></i> .....	4
<i><b>Details</b></i> .....	6
<i><b>Harmonies</b></i> .....	11
<i><b>Previews</b></i> .....	23
<i><b>Color Blindness Simulation</b></i> .....	26
<i><b>CSS Examples</b></i> .....	29

# **Color**

**Decimal(14068397)**

# Conversions

## Conversions Part 1

Format	Color
Hex	D6AAAD
RGB	214, 170, 173
RGB Percent	84%, 67%, 68%
CMY	0.1608, 0.3333, 0.3216
CMYK	0.00, 0.21, 0.19, 0.16
HSL	356°, 35%, 75%
HSV	356°, 21%, 84%
XYZ	49.6491, 46.0627, 45.8094
YIQ	183.4980, 25.2610, 10.2610

# Conversions

## Conversions Part 2

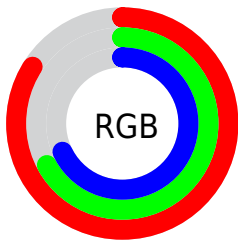
Format	Color
<a href="#">RYB</a>	<a href="#">214, 170, 173</a>
Decimal	<a href="#">14068397</a>
<a href="#">CIELab</a>	<a href="#">73.59, 16.53, 4.60</a>
<a href="#">CIElCh</a>	<a href="#">74, 17.160, 15.535</a>
<a href="#">Yxy</a>	<a href="#">46.0627, 0.3508, 0.3255</a>
Android (android.graphics.Color)	<a href="#">4292258477</a> ( <a href="#">0xFFD6AAAD</a> )
<a href="#">YUV</a>	<a href="#">183.4980, -5.1755, 26.7503</a>
<a href="#">Hunter-Lab</a>	<a href="#">67.8695, 11.8078, 7.4902</a>

# Details

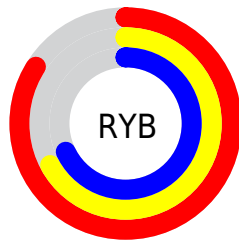
The Decimal color **14068397** is a light color, and the websafe version is hex **CC9999**. A complement of this color would be **11196115**, and the grayscale version is **12105912**.

A 20% lighter version of the original color is **16769508**, and **10450553** is the 20% darker color. If you saturate the color by 10%, you get **14063001**, and if you desaturate by 10%, it is **14073793**.

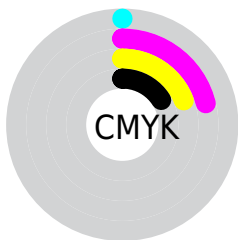
# Distribution



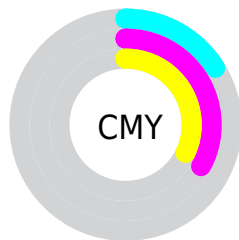
- Red (84%)
- Green (67%)
- Blue (68%)



- Red (84%)
- Yellow (67%)
- Blue (68%)



- Cyan (0%)
- Magenta (21%)
- Yellow (19%)
- Black (16%)



- Cyan (16%)
- Magenta (33%)
- Yellow (32%)

# Brightness & Saturation Gradients

These gradients show how the Decimal color 14068397 changes by changing the brightness by 10 percent. The first figure shows a shift by +10% for each color and the second figure -10%.

Similar to the brightness gradients but the following saturation gradients show a change of the Decimal color 14068397 by changing the saturation by 10% instead.



 14068397

 14068397

16777215

 12226450

 16769508

 10450553

16776959

 8674656

 6964552

 5320242

 3741981

 2424835

 0

 14068397

 14068397

 14063001

 14073793

 14057349

 14079445

 14051953

 14084841

 14046301

 14090237

 14040905

 14090239

 14035509

 14029857

 14024719

# Harmonies

## Analogous

The Analogous color harmony consists of three colors that are next to each other on the color wheel.



13675453



14068397



13872543

# Triad

The Triadic color harmony groups three colors that are evenly spaced from another and form a triangle on the color wheel.



14068397



10927006



10139859

# Complementary

The Complementary color scheme is a pair of colors which are on the opposite of each other on the color wheel.



14068397



11196115

# Split Complementary

Split-complementary colors differ from the complementary color scheme. The scheme consists of three colors, the original color and two neighbors of the complement color.



9288907



14068397



9878956

# Square

The Square scheme is like the rectangle color scheme, but the four colors are evenly spaced on the color wheel.



14068397



12170902



9223869



11449299

# Rectangle

The Rectangle color scheme consists of four colors that form a rectangle on the color wheel.



14068397



13479833



9223869



9812689



# Sweetspot

The Sweet Spot groups the original color and five complimentary colors.



14068397



16773361



13806294



8419191



0



8421504



# Same Dimension

The Same Dimension uses a secret algorithm to generate beautiful new colors.



14068397



16760772



14073002



7037025



11206668



2818051



# Inverse Universe

The Inverse Universe completely reimagines the original color for something new.



14068397



16760772



11191510



7037025



11206668



2818051



# Previews

## White Background



This preview shows how the Decimal color 14068397 looks on a white background.

## Color Contrast Check

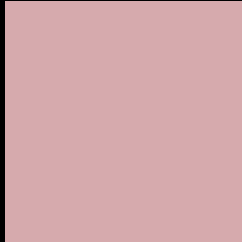
Large Text (above 18pt) WCAG AA × Fail

Any Text WCAG AA × Fail

Large Text (above 18pt) WCAG AAA × Fail

Any Text WCAG AAA × Fail

# Black Background



This preview shows how the Decimal color 14068397 looks on a black background.

## Color Contrast Check

Large Text (above 18pt) WCAG AA ✓ Pass

Any Text WCAG AA ✓ Pass

Large Text (above 18pt) WCAG AAA ✓ Pass

Any Text WCAG AAA ✓ Pass

If you want to check with other color combinations, try the [Color Contrast Checker](#).



## Decimal 14068397 Background



This preview shows how black text looks on a background with the Decimal color 14068397.




This preview shows how white text looks on a background with the Decimal color 14068397.

# Color Blindness Simulation

Color vision deficiency is a very complex topic, and I could not describe the different causes any better than Wikipedia does, so if you want to learn more, you should check out their [article about color blindness](#).

## Dichromacy





**Tritanopia**  
14133686

# Trichromacy



**Original Color**  
14068397

**Protanomaly**  
12890289

**Deuteranomaly**  
13544876

**Tritanomaly**  
14133683

# Monochromacy



**Original Color**  
14068397

**Achromatopsia**  
12040119

**Achromatomaly**  
12759731

# CSS Examples

## Text

The CSS property to change the color of the text to Decimal 14068397 is called "color". The color property can be set on classes, ids or directly on the HTML element.

This example shows how text in the color #D6AAAD looks like.

```
.text, #text, p{  
    color:#D6AAAD  
}
```

If you want to add a text shadow in that color use the text-shadow property, you can generate a text shadow directly with our [CSS Text Shadow Generator](#).

Here you see how black text with a 4 pixel #D6AAAD colored shadow looks like.

```
.shadow{ text-shadow: 4px 4px 2px #D6AAAD
}
```

## Border

The CSS property to change the border of an element to Decimal 14068397 is called "border". The border property can be set on classes, ids or directly on the HTML element.

This example shows the color as border, it can be applied via the CSS property "border" or "border-color".

```
.border, #border, table{ border:4px solid
#D6AAAD }
```

If only the border color should be changed use the property `border-color`.

```
.border{ border-color:#D6AAAD }
```

If you want to add a box shadow in that color use:

Here you see how a box with a 4 pixel #D6AAAD colored shadow looks like.

```
.boxshadow{ -moz-box-shadow:4px 4px 4px  
4px #D6AAAD; -webkit-box-shadow:4px 4px  
4px 4px #D6AAAD; box-shadow:4px 4px 4px  
4px #D6AAAD }
```

# Background

The CSS property to change the background color of an element to Decimal 14068397 is called "background". The background property can be set on classes, ids or directly on the HTML element.

```
.background, #background, body{  
background:#D6AAAD }
```

If only the background color should be changed can be used:

```
.background{ background-color:#D6AAAD }
```

This example shows the color as background, it is applied via the CSS property "background".

To optimize and compress your CSS code, you can use our [online CSS compressor and optimizer](#) based on csstidy. If you want to create a linear or radial gradient as background or border, check our [CSS Gradient Generator](#).



Hey! You found this booklet interesting? Support Converting Colors with the new Membership Option!

The pro membership hides all ads, plus gives you double the colors in the color bucket, and more awesome pro features!

**[Learn more, Memberships starting at \\$2.50/m!](#)**

**Follow me  
on Twitter!**

@ConvertingColor