

# Converting Colors

Decimal(14069933)

Have a look what the booklet for  
Decimal(14069933) contains.

<b>Decimal(14069933)</b> .....	3
<i><b>Conversions</b></i> .....	4
<i><b>Details</b></i> .....	6
<i><b>Harmonies</b></i> .....	11
<i><b>Previews</b></i> .....	23
<i><b>Color Blindness Simulation</b></i> .....	26
<i><b>CSS Examples</b></i> .....	29

# **Color**

**Decimal(14069933)**

# Conversions

## Conversions Part 1

Format	Color
Hex	D6B0AD
RGB	214, 176, 173
RGB Percent	84%, 69%, 68%
CMY	0.1608, 0.3098, 0.3216
CMYK	0.00, 0.18, 0.19, 0.16
HSL	4°, 33%, 76%
HSV	4°, 19%, 84%
XYZ	50.7997, 48.3639, 46.1929
YIQ	187.0200, 23.6110, 7.1230

# Conversions

## Conversions Part 2

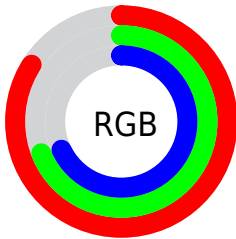
Format	Color
<a href="#">RYB</a>	<a href="#">214, 176, 173</a>
Decimal	<a href="#">14069933</a>
CIELab	<a href="#">75.05, 13.29, 6.71</a>
CIELCh	<a href="#">75, 14.891, 26.779</a>
Yxy	<a href="#">48.3639, 0.3495, 0.3327</a>
Android (android.graphics.Color)	<a href="#">4292260013</a> ( <a href="#">0xFFD6B0AD</a> )
YUV	<a href="#">187.0200, -6.9119, 23.6615</a>
Hunter-Lab	<a href="#">69.5442, 8.6860, 9.2991</a>

# Details

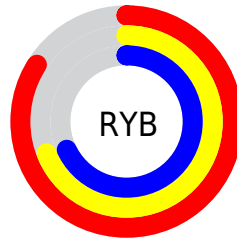
The Decimal color **14069933** is a light color, and the websafe version is hex **CC9999**. A complement of this color would be **11391958**, and the grayscale version is **12303291**.

A 20% lighter version of the original color is **16771300**, and **10451833** is the 20% darker color. If you saturate the color by 10%, you get **14064792**, and if you desaturate by 10%, it is **14075074**.

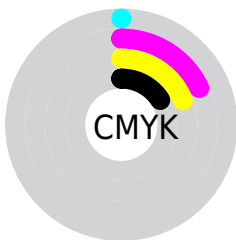
# Distribution



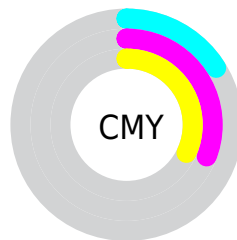
- Red (84%)
- Green (69%)
- Blue (68%)



- Red (84%)
- Yellow (69%)
- Blue (68%)



- Cyan (0%)
- Magenta (18%)
- Yellow (19%)
- Black (16%)



- Cyan (16%)
- Magenta (31%)
- Yellow (32%)

# Brightness & Saturation Gradients

These gradients show how the Decimal color 14069933 changes by changing the brightness by 10 percent. The first figure shows a shift by +10% for each color and the second figure -10%.

Similar to the brightness gradients but the following saturation gradients show a change of the Decimal color 14069933 by changing the saturation by 10% instead.



 14069933

 14069933

16777215

 12227986

 16771300

 10451833

 8675936

 7031368

 5387314

 3808797

 2426627

 0

 14069933

 14069933

 14064792

 14075074

 14059650

 14080216

 14054509

 14085357

 14049623

 14090239

 14044482

 14039341

 14034199

 14029058

 14028800

# Harmonies

## Analogous

The Analogous color harmony consists of three colors that are next to each other on the color wheel.



13938875



14069933



13743010

# Triad

The Triadic color harmony groups three colors that are evenly spaced from another and form a triangle on the color wheel.



14069933



10993577



11057876

# Complementary

The Complementary color scheme is a pair of colors which are on the opposite of each other on the color wheel.



14069933



11391958

# Split Complementary

Split-complementary colors differ from the complementary color scheme. The scheme consists of three colors, the original color and two neighbors of the complement color.



10141391



14069933



10142135

# Square

The Square scheme is like the rectangle color scheme, but the four colors are evenly spaced on the color wheel.



14069933



11975840



9814469



12236497

# Rectangle

The Rectangle color scheme consists of four colors that form a rectangle on the color wheel.



14069933



13285022



9814469



10730707

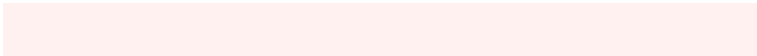


# Sweetspot

The Sweet Spot groups the original color and five complimentary colors.



14069933



16773616



14069203



8419191



0



8421504



# Same Dimension

The Same Dimension uses a secret algorithm to generate beautiful new colors.



14069933



16763332



14075053



7037280



11209984



2818816



# Inverse Universe

The Inverse Universe completely reimagines the original color for something new.



11391958



12909567



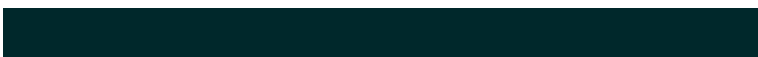
11386838



6318699



40619

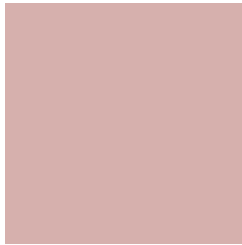


10283



# Previews

## White Background



This preview shows how the Decimal color 14069933 looks on a white background.

## Color Contrast Check

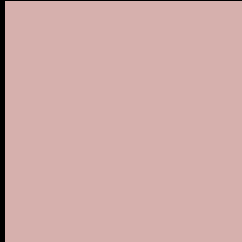
Large Text (above 18pt) WCAG AA × Fail

Any Text WCAG AA × Fail

Large Text (above 18pt) WCAG AAA × Fail

Any Text WCAG AAA × Fail

# Black Background



This preview shows how the Decimal color 14069933 looks on a black background.

## Color Contrast Check

Large Text (above 18pt) WCAG AA ✓ Pass

Any Text WCAG AA ✓ Pass

Large Text (above 18pt) WCAG AAA ✓ Pass

Any Text WCAG AAA ✓ Pass

If you want to check with other color combinations, try the [Color Contrast Checker](#).



## Decimal 14069933 Background



This preview shows how black text looks on a background with the Decimal color 14069933.



This preview shows how white text looks on a background with the Decimal color 14069933.

# Color Blindness Simulation

Color vision deficiency is a very complex topic, and I could not describe the different causes any better than Wikipedia does, so if you want to learn more, you should check out their [article about color blindness](#).

## Dichromacy





**Tritanopia**  
14200507

# Trichromacy



**Original Color**  
14069933

**Protanomaly**  
13088176

**Deuteranomaly**  
13808301

**Tritanomaly**  
14135222

# Monochromacy



**Original Color**  
14069933

**Achromatopsia**  
12303291

**Achromatomaly**  
12957622

# CSS Examples

## Text

The CSS property to change the color of the text to Decimal 14069933 is called "color". The color property can be set on classes, ids or directly on the HTML element.

This example shows how text in the color #D6B0AD looks like.

```
.text, #text, p{  
    color:#D6B0AD  
}
```

If you want to add a text shadow in that color use the text-shadow property, you can generate a text shadow directly with our [CSS Text Shadow Generator](#).

Here you see how black text with a 4 pixel #D6B0AD colored shadow looks like.

```
.shadow{ text-shadow: 4px 4px 2px #D6B0AD
}
```

## Border

The CSS property to change the border of an element to Decimal 14069933 is called "border". The border property can be set on classes, ids or directly on the HTML element.

This example shows the color as border, it can be applied via the CSS property "border" or "border-color".

```
.border, #border, table{ border:4px solid
#D6B0AD }
```

If only the border color should be changed use the property `border-color`.

```
.border{ border-color:#D6B0AD }
```

If you want to add a box shadow in that color use:

Here you see how a box with a 4 pixel #D6B0AD colored shadow looks like.

```
.boxshadow{ -moz-box-shadow:4px 4px 4px  
4px #D6B0AD; -webkit-box-shadow:4px 4px  
4px 4px #D6B0AD; box-shadow:4px 4px 4px  
4px #D6B0AD }
```

# Background

The CSS property to change the background color of an element to Decimal 14069933 is called "background". The background property can be set on classes, ids or directly on the HTML element.

```
.background, #background, body{  
background:#D6B0AD }
```

If only the background color should be changed can be used:

```
.background{ background-color:#D6B0AD }
```

This example shows the color as background, it is applied via the CSS property "background".

To optimize and compress your CSS code, you can use our [online CSS compressor and optimizer](#) based on csstidy. If you want to create a linear or radial gradient as background or border, check our [CSS Gradient Generator](#).



Hey! You found this booklet interesting? Support Converting Colors with the new Membership Option!

The pro membership hides all ads, plus gives you double the colors in the color bucket, and more awesome pro features!

**[Learn more, Memberships starting at \\$2.50/m!](#)**

**Follow me  
on Twitter!**

@ConvertingColor