

Converting Colors

Decimal(14070943)

Have a look what the booklet for
Decimal(14070943) contains.

Decimal(14070943)	3
<i>Conversions</i>	4
<i>Details</i>	6
<i>Harmonies</i>	11
<i>Previews</i>	23
<i>Color Blindness Simulation</i>	26
<i>CSS Examples</i>	29

Color

Decimal(14070943)

Conversions

Conversions Part 1

Format	Color
Hex	D6B49F
RGB	214, 180, 159
RGB Percent	84%, 71%, 62%
CMY	0.1608, 0.2941, 0.3765
CMYK	0.00, 0.16, 0.26, 0.16
HSL	23°, 40%, 73%
HSV	23°, 26%, 84%
XYZ	50.3108, 49.4419, 39.6925
YIQ	187.7720, 27.0050, 0.6770

Conversions

Conversions Part 2

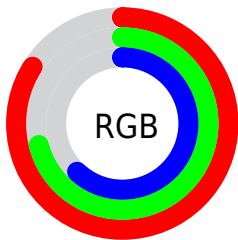
Format	Color
RYB	214, 193, 159
Decimal	14070943
CIELab	75.73, 9.09, 15.28
CIELCh	76, 17.778, 59.234
Yxy	49.4419, 0.3608, 0.3546
Android (android.graphics.Color)	4292261023 (0xFFD6B49F)
YUV	187.7720, -14.1846, 23.0020
Hunter-Lab	70.3149, 4.6669, 15.7515

Details

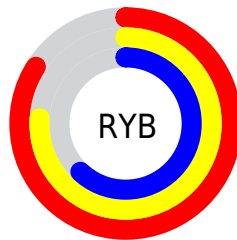
The Decimal color **14070943** is a light color, and the websafe version is hex **CC9999**. A complement of this color would be **10469846**, and the grayscale version is **12369084**.

A 20% lighter version of the original color is **16772310**, and **10452844** is the 20% darker color. If you saturate the color by 10%, you get **14067594**, and if you desaturate by 10%, it is **14074292**.

Distribution



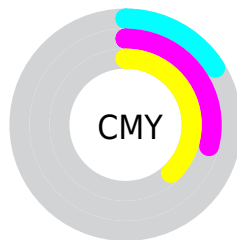
- Red (84%)
- Green (71%)
- Blue (62%)



- Red (84%)
- Yellow (76%)
- Blue (62%)



- Cyan (0%)
- Magenta (16%)
- Yellow (26%)
- Black (16%)



- Cyan (16%)
- Magenta (29%)
- Yellow (38%)

Brightness & Saturation Gradients

These gradients show how the Decimal color 14070943 changes by changing the brightness by 10 percent. The first figure shows a shift by +10% for each color and the second figure -10%.

Similar to the brightness gradients but the following saturation gradients show a change of the Decimal color 14070943 by changing the saturation by 10% instead.

 14070943

 14070943

16777215

 12228997

 16772310

 10452844

 16777202

 8676947

 6966844

 5322534

 3744274

 2297088

 0

 14070943

 14070943

 14067594

 14074292

 14064244

 14077642

 14060639

 14081247

 14057289

 14084597

 14053940

 14087935

 14050591

 14090239

 14046985

 14045696

Harmonies

Analogous

The Analogous color harmony consists of three colors that are next to each other on the color wheel.



14528683



14070943



13154714

Triad

The Triadic color harmony groups three colors that are evenly spaced from another and form a triangle on the color wheel.



14070943



9815226



12433367

Complementary

The Complementary color scheme is a pair of colors which are on the opposite of each other on the color wheel.



14070943



10469846

Split Complementary

Split-complementary colors differ from the complementary color scheme. The scheme consists of three colors, the original color and two neighbors of the complement color.



11058395



14070943



9422026

Square

The Square scheme is like the rectangle color scheme, but the four colors are evenly spaced on the color wheel.



14070943



10732201



9880022



13677260

Rectangle

The Rectangle color scheme consists of four colors that form a rectangle on the color wheel.



14070943



12369308



9880022



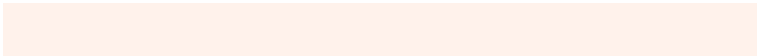
11974873

Sweetspot

The Sweet Spot groups the original color and five complimentary colors.



14070943



16773867



14065602



8419443



0



8421504

Same Dimension

The Same Dimension uses a secret algorithm to generate beautiful new colors.



14070943



16764592



14077855



7038048



11223296



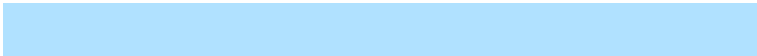
2822400

Inverse Universe

The Inverse Universe completely reimagines the original color for something new.



10469846



11592191



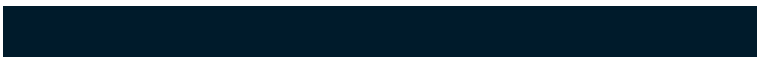
10462934



6317931



27307



6955

Previews

White Background



This preview shows how the Decimal color 14070943 looks on a white background.

Color Contrast Check

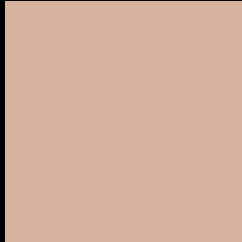
Large Text (above 18pt) WCAG AA × Fail

Any Text WCAG AA × Fail

Large Text (above 18pt) WCAG AAA × Fail

Any Text WCAG AAA × Fail

Black Background



This preview shows how the Decimal color 14070943 looks on a black background.

Color Contrast Check

Large Text (above 18pt) WCAG AA ✓ Pass

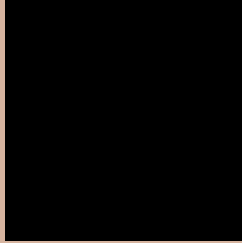
Any Text WCAG AA ✓ Pass

Large Text (above 18pt) WCAG AAA ✓ Pass

Any Text WCAG AAA ✓ Pass

If you want to check with other color combinations, try the [Color Contrast Checker](#).

Decimal 14070943 Background



This preview shows how black text looks on a background with the Decimal color 14070943.




This preview shows how white text looks on a background with the Decimal color 14070943.

Color Blindness Simulation

Color vision deficiency is a very complex topic, and I could not describe the different causes any better than Wikipedia does, so if you want to learn more, you should check out their [article about color blindness](#).

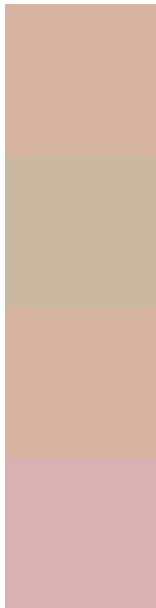
Dichromacy





Tritanopia
14332093

Trichromacy



Original Color
14070943

Protanomaly
13351073

Deuteranomaly
14136479

Tritanomaly
14266802

Monochromacy



Original Color
14070943

Achromatopsia
12369084

Achromatomaly
12958129

CSS Examples

Text

The CSS property to change the color of the text to Decimal 14070943 is called "color". The color property can be set on classes, ids or directly on the HTML element.

This example shows how text in the color #D6B49F looks like.

```
.text, #text, p{  
    color:#D6B49F  
}
```

If you want to add a text shadow in that color use the text-shadow property, you can generate a text shadow directly with our [CSS Text Shadow Generator](#).

Here you see how black text with a 4 pixel #D6B49F colored shadow looks like.

```
.shadow{ text-shadow: 4px 4px 2px #D6B49F
}
```

Border

The CSS property to change the border of an element to Decimal 14070943 is called "border". The border property can be set on classes, ids or directly on the HTML element.

This example shows the color as border, it can be applied via the CSS property "border" or "border-color".

```
.border, #border, table{ border:4px solid
#D6B49F }
```

If only the border color should be changed use the property `border-color`.

```
.border{ border-color:#D6B49F }
```

If you want to add a box shadow in that color use:

Here you see how a box with a 4 pixel #D6B49F colored shadow looks like.

```
.boxshadow{ -moz-box-shadow:4px 4px 4px  
4px #D6B49F; -webkit-box-shadow:4px 4px  
4px 4px #D6B49F; box-shadow:4px 4px 4px  
4px #D6B49F }
```

Background

The CSS property to change the background color of an element to Decimal 14070943 is called "background". The background property can be set on classes, ids or directly on the HTML element.

```
.background, #background, body{  
background:#D6B49F }
```

If only the background color should be changed can be used:

```
.background{ background-color:#D6B49F }
```

This example shows the color as background, it is applied via the CSS property "background".

To optimize and compress your CSS code, you can use our [online CSS compressor and optimizer](#) based on csstidy. If you want to create a linear or radial gradient as background or border, check our [CSS Gradient Generator](#).

Hey! You found this booklet interesting? Support Converting Colors with the new Membership Option!

The pro membership hides all ads, plus gives you double the colors in the color bucket, and more awesome pro features!

[Learn more, Memberships starting at \\$2.50/m!](#)

**Follow me
on Twitter!**

@ConvertingColor