

Converting Colors

Decimal(14070960)

Have a look what the booklet for
Decimal(14070960) contains.

Decimal(14070960)	3
<i>Conversions</i>	4
<i>Details</i>	6
<i>Harmonies</i>	11
<i>Previews</i>	23
<i>Color Blindness Simulation</i>	26
<i>CSS Examples</i>	29

Color

Decimal(14070960)

Conversions

Conversions Part 1

Format	Color
Hex	D6B4B0
RGB	214, 180, 176
RGB Percent	84%, 71%, 69%
CMY	0.1608, 0.2941, 0.3098
CMYK	0.00, 0.16, 0.18, 0.16
HSL	6°, 32%, 76%
HSV	6°, 18%, 84%
XYZ	51.8893, 50.0732, 48.0045
YIQ	189.7100, 21.5480, 5.9640

Conversions

Conversions Part 2

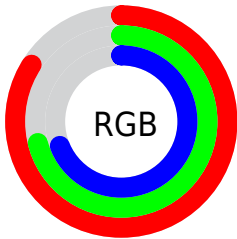
Format	Color
RYB	214, 180, 176
Decimal	14070960
CIELab	76.11, 11.60, 6.60
CIELCh	76, 13.349, 29.621
Yxy	50.0732, 0.3460, 0.3339
Android (android.graphics.Color)	4292261040 (0xFFD6B4B0)
YUV	189.7100, -6.7590, 21.3023
Hunter-Lab	70.7625, 7.0577, 9.3120

Details

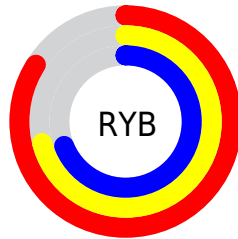
The Decimal color **14070960** is a light color, and the websafe version is hex **CC9999**. A complement of this color would be **11588310**, and the grayscale version is **12500670**.

A 20% lighter version of the original color is **16772328**, and **10452860** is the 20% darker color. If you saturate the color by 10%, you get **14066075**, and if you desaturate by 10%, it is **14075845**.

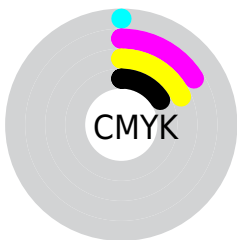
Distribution



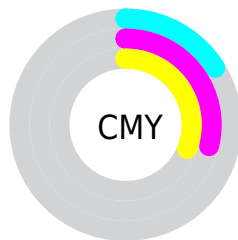
- Red (84%)
- Green (71%)
- Blue (69%)



- Red (84%)
- Yellow (71%)
- Blue (69%)



- Cyan (0%)
- Magenta (16%)
- Yellow (18%)
- Black (16%)



- Cyan (16%)
- Magenta (29%)
- Yellow (31%)

Brightness & Saturation Gradients

These gradients show how the Decimal color 14070960 changes by changing the brightness by 10 percent. The first figure shows a shift by +10% for each color and the second figure -10%.

Similar to the brightness gradients but the following saturation gradients show a change of the Decimal color 14070960 by changing the saturation by 10% instead.

 14070960

 14070960

16777215

 12229013


 16772328

 10452860

 8676963

 7032395

 5388084

 3809567

 2427911

 0

 14070960

 14070960

 14066075

 14075845

 14061189

 14080731

 14056304

 14085616

 14051162

 14090239

 14046277

 14041392

 14036506

 14031621

 14030592

Harmonies

Analogous

The Analogous color harmony consists of three colors that are next to each other on the color wheel.



13939644



14070960



13744039

Triad

The Triadic color harmony groups three colors that are evenly spaced from another and form a triangle on the color wheel.



14070960



11190959



11451860

Complementary

The Complementary color scheme is a pair of colors which are on the opposite of each other on the color wheel.



14070960



11588310

Split Complementary

Split-complementary colors differ from the complementary color scheme. The scheme consists of three colors, the original color and two neighbors of the complement color.



10666192



14070960



10535867

Square

The Square scheme is like the rectangle color scheme, but the four colors are evenly spaced on the color wheel.



14070960



12107686



10273735



12499409

Rectangle

The Rectangle color scheme consists of four colors that form a rectangle on the color wheel.



14070960



13285796



10273735



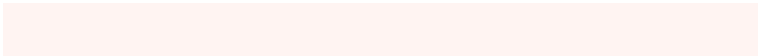
11189972

Sweetspot

The Sweet Spot groups the original color and five complimentary colors.



14070960



16774386



14069970



8419704



0



8421504

Same Dimension

The Same Dimension uses a secret algorithm to generate beautiful new colors.



14070960



16764873



14075824



7037536



11211264



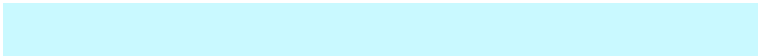
2819328

Inverse Universe

The Inverse Universe completely reimagines the original color for something new.



11588310



13236735



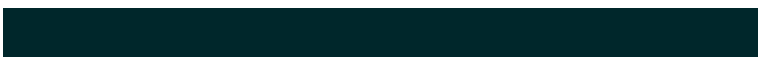
11583446



6318699



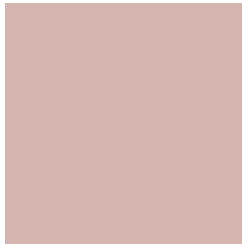
39339



10027

Previews

White Background



This preview shows how the Decimal color 14070960 looks on a white background.

Color Contrast Check

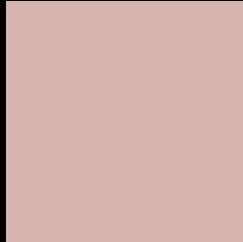
Large Text (above 18pt) WCAG AA × Fail

Any Text WCAG AA × Fail

Large Text (above 18pt) WCAG AAA × Fail

Any Text WCAG AAA × Fail

Black Background



This preview shows how the Decimal color 14070960 looks on a black background.

Color Contrast Check

Large Text (above 18pt) WCAG AA ✓ Pass

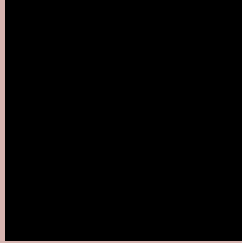
Any Text WCAG AA ✓ Pass

Large Text (above 18pt) WCAG AAA ✓ Pass

Any Text WCAG AAA ✓ Pass

If you want to check with other color combinations, try the [Color Contrast Checker](#).

Decimal 14070960 Background



This preview shows how black text looks on a background with the Decimal color 14070960.



This preview shows how white text looks on a background with the Decimal color 14070960.

Color Blindness Simulation

Color vision deficiency is a very complex topic, and I could not describe the different causes any better than Wikipedia does, so if you want to learn more, you should check out their [article about color blindness](#).

Dichromacy





Tritanopia
14201535

Trichromacy



Original Color
14070960

Protanomaly
13220019

Deuteranomaly
13874608

Tritanomaly
14136250

Monochromacy



Original Color
14070960

Achromatopsia
12500670

Achromatomaly
13089465

CSS Examples

Text

The CSS property to change the color of the text to Decimal 14070960 is called "color". The color property can be set on classes, ids or directly on the HTML element.

This example shows how text in the color #D6B4B0 looks like.

```
.text, #text, p{  
    color:#D6B4B0  
}
```

If you want to add a text shadow in that color use the text-shadow property, you can generate a text shadow directly with our [CSS Text Shadow Generator](#).

Here you see how black text with a 4 pixel #D6B4B0 colored shadow looks like.

```
.shadow{ text-shadow: 4px 4px 2px #D6B4B0
}
```

Border

The CSS property to change the border of an element to Decimal 14070960 is called "border". The border property can be set on classes, ids or directly on the HTML element.

This example shows the color as border, it can be applied via the CSS property "border" or "border-color".

```
.border, #border, table{ border:4px solid
#D6B4B0 }
```

If only the border color should be changed use the property `border-color`.

```
.border{ border-color:#D6B4B0 }
```

If you want to add a box shadow in that color use:

Here you see how a box with a 4 pixel #D6B4B0 colored shadow looks like.

```
.boxshadow{ -moz-box-shadow:4px 4px 4px  
4px #D6B4B0; -webkit-box-shadow:4px 4px  
4px 4px #D6B4B0; box-shadow:4px 4px 4px  
4px #D6B4B0 }
```

Background

The CSS property to change the background color of an element to Decimal 14070960 is called "background". The background property can be set on classes, ids or directly on the HTML element.

```
.background, #background, body{  
background:#D6B4B0 }
```

If only the background color should be changed can be used:

```
.background{ background-color:#D6B4B0 }
```

This example shows the color as background, it is applied via the CSS property "background".

To optimize and compress your CSS code, you can use our [online CSS compressor and optimizer](#) based on csstidy. If you want to create a linear or radial gradient as background or border, check our [CSS Gradient Generator](#).

Hey! You found this booklet interesting? Support Converting Colors with the new Membership Option!

The pro membership hides all ads, plus gives you double the colors in the color bucket, and more awesome pro features!

[Learn more, Memberships starting at \\$2.50/m!](#)

**Follow me
on Twitter!**

@ConvertingColor