

Converting Colors

Decimal(14071727)

Have a look what the booklet for
Decimal(14071727) contains.

Decimal(14071727)	3
<i>Conversions</i>	4
<i>Details</i>	6
<i>Harmonies</i>	11
<i>Previews</i>	23
<i>Color Blindness Simulation</i>	26
<i>CSS Examples</i>	29

Color

Decimal(14071727)

Conversions

Conversions Part 1

Format	Color
Hex	D6B7AF
RGB	214, 183, 175
RGB Percent	84%, 72%, 69%
CMY	0.1608, 0.2824, 0.3137
CMYK	0.00, 0.14, 0.18, 0.16
HSL	12°, 32%, 76%
HSV	12°, 18%, 84%
XYZ	52.4029, 51.2583, 47.6893
YIQ	191.3570, 21.0440, 4.0840

Conversions

Conversions Part 2

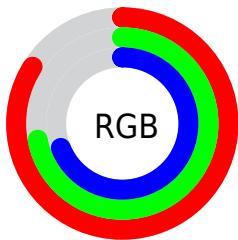
Format	Color
R _Y B	214, 185, 175
Decimal	14071727
CIE Lab	76.84, 9.84, 8.17
CIE LCh	77, 12.793, 39.717
Yxy	51.2583, 0.3462, 0.3387
Android (android.graphics.Color)	4292261807 (0xFFD6B7AF)
YUV	191.3570, -8.0640, 19.8579
Hunter-Lab	71.5949, 5.3596, 10.6233

Details

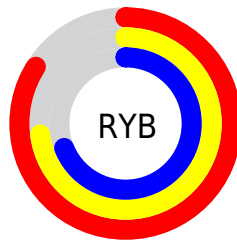
The Decimal color **14071727** is a light color, and the websafe version is hex **FFCCCC**. A complement of this color would be **11521750**, and the grayscale version is **12566463**.

A 20% lighter version of the original color is **16773095**, and **10453627** is the 20% darker color. If you saturate the color by 10%, you get **14067354**, and if you desaturate by 10%, it is **14076100**.

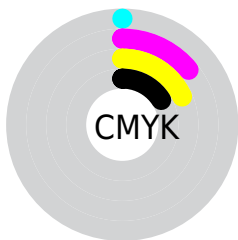
Distribution



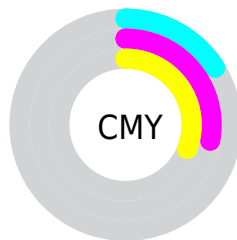
- Red (84%)
- Green (72%)
- Blue (69%)



- Red (84%)
- Yellow (73%)
- Blue (69%)



- Cyan (0%)
- Magenta (14%)
- Yellow (18%)
- Black (16%)



- Cyan (16%)
- Magenta (28%)
- Yellow (31%)

Brightness & Saturation Gradients

These gradients show how the Decimal color 14071727 changes by changing the brightness by 10 percent. The first figure shows a shift by +10% for each color and the second figure -10%.

Similar to the brightness gradients but the following saturation gradients show a change of the Decimal color 14071727 by changing the saturation by 10% instead.

 14071727

 14071727

16777215

 12229780

 16773095

 10453627

 8677730

 7033162

 5388851

 3810334

 2428677

 0

 14071727

 14071727

14067354

14076100

14062980

14080474

14058607

14084847

14054233

14089215

14049860

14090239

14045487

14041113

14036740

14035968

Harmonies

Analogous

The Analogous color harmony consists of three colors that are next to each other on the color wheel.



14137018



14071727



13613736

Triad

The Triadic color harmony groups three colors that are evenly spaced from another and form a triangle on the color wheel.



14071727



11125941



11976149

Complementary

The Complementary color scheme is a pair of colors which are on the opposite of each other on the color wheel.



14071727



11521750

Split Complementary

Split-complementary colors differ from the complementary color scheme. The scheme consists of three colors, the original color and two neighbors of the complement color.



11059667



14071727



10601921

Square

The Square scheme is like the rectangle color scheme, but the four colors are evenly spaced on the color wheel.



14071727



11977387



10601676



12958160

Rectangle

The Rectangle color scheme consists of four colors that form a rectangle on the color wheel.



14071727



13155750



10601676



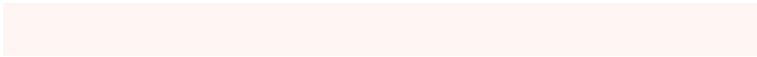
11648981

Sweetspot

The Sweet Spot groups the original color and five complimentary colors.



14071727



16774642



14069710



8419704



0



8421504

Same Dimension

The Same Dimension uses a secret algorithm to generate beautiful new colors.



14071727



16765639



14076591



7037792



11215616



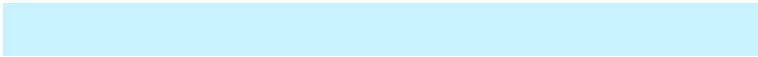
2820352

Inverse Universe

The Inverse Universe completely reimagines the original color for something new.



11521750



13104127



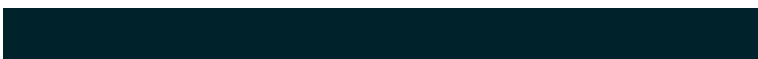
11516886



6318443



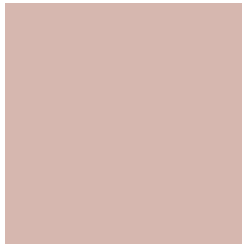
34987



8747

Previews

White Background



This preview shows how the Decimal color 14071727 looks on a white background.

Color Contrast Check

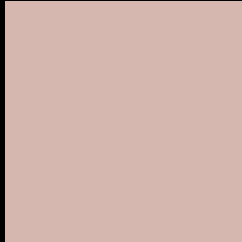
Large Text (above 18pt) WCAG AA × Fail

Any Text WCAG AA × Fail

Large Text (above 18pt) WCAG AAA × Fail

Any Text WCAG AAA × Fail

Black Background



This preview shows how the Decimal color 14071727 looks on a black background.

Color Contrast Check

Large Text (above 18pt) WCAG AA ✓ Pass

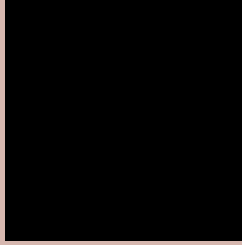
Any Text WCAG AA ✓ Pass

Large Text (above 18pt) WCAG AAA ✓ Pass

Any Text WCAG AAA ✓ Pass

If you want to check with other color combinations, try the [Color Contrast Checker](#).

Decimal 14071727 Background



This preview shows how black text looks on a background with the Decimal color 14071727.



This preview shows how white text looks on a background with the Decimal color 14071727.

Color Blindness Simulation

Color vision deficiency is a very complex topic, and I could not describe the different causes any better than Wikipedia does, so if you want to learn more, you should check out their [article about color blindness](#).

Dichromacy



Original Color
14071727

Protanopia
12893618

Deuteranopia
14071727



Tritanopia
14202050

Trichromacy



Original Color
14071727

Protanomaly
13351857

Deuteranomaly
14071727

Tritanomaly
14136763

Monochromacy



Original Color
14071727

Achromatopsia
12566463

Achromatomaly
13089977

CSS Examples

Text

The CSS property to change the color of the text to Decimal 14071727 is called "color". The color property can be set on classes, ids or directly on the HTML element.

This example shows how text in the color #D6B7AF looks like.

```
.text, #text, p{  
  color:#D6B7AF  
}
```

If you want to add a text shadow in that color use the text-shadow property, you can generate a text shadow directly with our [CSS Text Shadow Generator](#).

Here you see how black text with a 4 pixel #D6B7AF colored shadow looks like.

```
.shadow{ text-shadow: 4px 4px 2px #D6B7AF  
}
```

Border

The CSS property to change the border of an element to Decimal 14071727 is called "border". The border property can be set on classes, ids or directly on the HTML element.

This example shows the color as border, it can be applied via the CSS property "border" or "border-color".

```
.border, #border, table{ border:4px solid  
#D6B7AF }
```

If only the border color should be changed use the property `border-color`.

```
.border{ border-color:#D6B7AF }
```

If you want to add a box shadow in that color use:

Here you see how a box with a 4 pixel #D6B7AF colored shadow looks like.

```
.boxshadow{ -moz-box-shadow:4px 4px 4px  
4px #D6B7AF; -webkit-box-shadow:4px 4px  
4px 4px #D6B7AF; box-shadow:4px 4px 4px  
4px #D6B7AF }
```

Background

The CSS property to change the background color of an element to Decimal 14071727 is called "background". The background property can be set on classes, ids or directly on the HTML element.

```
.background, #background, body{  
background:#D6B7AF }
```

If only the background color should be changed can be used:

```
.background{ background-color:#D6B7AF }
```

This example shows the color as background, it is applied via the CSS property "background".

To optimize and compress your CSS code, you can use our [online CSS compressor and optimizer](#) based on csstidy. If you want to create a linear or radial gradient as background or border, check our [CSS Gradient Generator](#).

Hey! You found this booklet interesting? Support Converting Colors with the new Membership Option!

The pro membership hides all ads, plus gives you double the colors in the color bucket, and more awesome pro features!

[Learn more, Memberships starting at \\$2.50/m!](#)

**Follow me
on Twitter!**

@ConvertingColor