

Converting Colors

Decimal(14072246)

Have a look what the booklet for
Decimal(14072246) contains.

Decimal(14072246)	3
<i>Conversions</i>	4
<i>Details</i>	6
<i>Harmonies</i>	11
<i>Previews</i>	23
<i>Color Blindness Simulation</i>	26
<i>CSS Examples</i>	29

Color

Decimal(14072246)

Conversions

Conversions Part 1

Format	Color
Hex	D6B9B6
RGB	214, 185, 182
RGB Percent	84%, 73%, 71%
CMY	0.1608, 0.2745, 0.2863
CMYK	0.00, 0.14, 0.15, 0.16
HSL	6°, 28%, 78%
HSV	6°, 15%, 84%
XYZ	53.5240, 52.3715, 51.5437
YIQ	193.3290, 18.2470, 5.2150

Conversions

Conversions Part 2

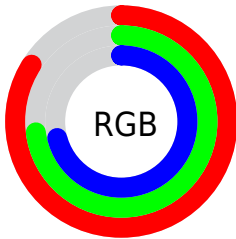
Format	Color
R _Y B	214, 185, 182
Decimal	14072246
CIE Lab	77.50, 9.87, 5.34
CIE LCh	78, 11.219, 28.416
Yxy	52.3715, 0.3400, 0.3326
Android (android.graphics.Color)	4292262326 (0xFFD6B9B6)
YUV	193.3290, -5.5852, 18.1285
Hunter-Lab	72.3681, 5.3757, 8.4288

Details

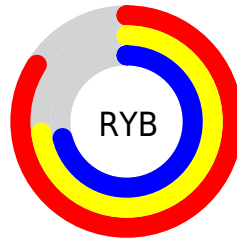
The Decimal color **14072246** is a light color, and the websafe version is hex **CCCCCC**. A complement of this color would be **11981782**, and the grayscale version is **12698049**.

A 20% lighter version of the original color is **16773614**, and **10454145** is the 20% darker color. If you saturate the color by 10%, you get **14067361**, and if you desaturate by 10%, it is **14077131**.

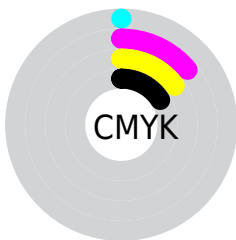
Distribution



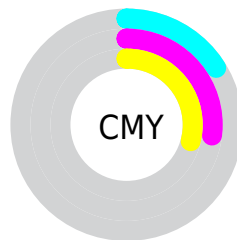
- Red (84%)
- Green (73%)
- Blue (71%)



- Red (84%)
- Yellow (73%)
- Blue (71%)



- Cyan (0%)
- Magenta (14%)
- Yellow (15%)
- Black (16%)



- Cyan (16%)
- Magenta (27%)
- Yellow (29%)

Brightness & Saturation Gradients

These gradients show how the Decimal color 14072246 changes by changing the brightness by 10 percent. The first figure shows a shift by +10% for each color and the second figure -10%.

Similar to the brightness gradients but the following saturation gradients show a change of the Decimal color 14072246 by changing the saturation by 10% instead.

 14072246

 14072246

16777215

 12230299

 16773614

 10454145

 8743784

 7033424

 5454649

 3876388

 2429198

 0

 14072246

 14072246

 14067361

 14077131

 14062219

 14082273

 14057334

 14087158

 14052192

 14090239

 14047307

 14042422

 14037280

 14032395

 14029824

Harmonies

Analogous

The Analogous color harmony consists of three colors that are next to each other on the color wheel.



13941184



14072246



13810606

Triad

The Triadic color harmony groups three colors that are evenly spaced from another and form a triangle on the color wheel.



14072246



11650228



11845844

Complementary

The Complementary color scheme is a pair of colors which are on the opposite of each other on the color wheel.



14072246



11981782

Split Complementary

Split-complementary colors differ from the complementary color scheme. The scheme consists of three colors, the original color and two neighbors of the complement color.



11191505



14072246



11126462

Square

The Square scheme is like the rectangle color scheme, but the four colors are evenly spaced on the color wheel.



14072246



12436141



10929609



12697042

Rectangle

The Rectangle color scheme consists of four colors that form a rectangle on the color wheel.



14072246



13417899



10929609



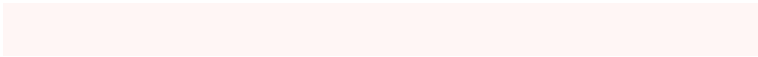
11584212

Sweetspot

The Sweet Spot groups the original color and five complimentary colors.



14072246



16774901



14071507



8419961



0



8421504

Same Dimension

The Same Dimension uses a secret algorithm to generate beautiful new colors.



14072246



16766417



14076342



7037280



11210752



2819072

Inverse Universe

The Inverse Universe completely reimagines the original color for something new.



11981782



13761535



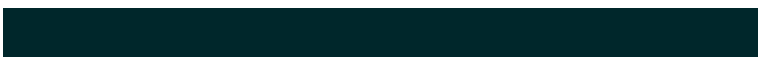
11977686



6318699



39851



10027

Previews

White Background



This preview shows how the Decimal color 14072246 looks on a white background.

Color Contrast Check

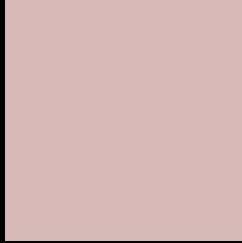
Large Text (above 18pt) WCAG AA × Fail

Any Text WCAG AA × Fail

Large Text (above 18pt) WCAG AAA × Fail

Any Text WCAG AAA × Fail

Black Background



This preview shows how the Decimal color 14072246 looks on a black background.

Color Contrast Check

Large Text (above 18pt) WCAG AA ✓ Pass

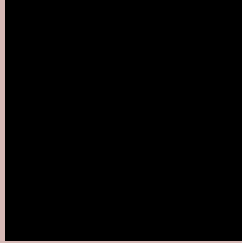
Any Text WCAG AA ✓ Pass

Large Text (above 18pt) WCAG AAA ✓ Pass

Any Text WCAG AAA ✓ Pass

If you want to check with other color combinations, try the [Color Contrast Checker](#).

Decimal 14072246 Background



This preview shows how black text looks on a background with the Decimal color 14072246.




This preview shows how white text looks on a background with the Decimal color 14072246.

Color Blindness Simulation

Color vision deficiency is a very complex topic, and I could not describe the different causes any better than Wikipedia does, so if you want to learn more, you should check out their [article about color blindness](#).

Dichromacy





Tritanopia
14202821

Trichromacy



Original Color
14072246

Protanomaly
13352376

Deuteranomaly
14072246

Tritanomaly
14137536

Monochromacy



Original Color
14072246

Achromatopsia
12698049

Achromatomaly
13221565

CSS Examples

Text

The CSS property to change the color of the text to Decimal 14072246 is called "color". The color property can be set on classes, ids or directly on the HTML element.

This example shows how text in the color #D6B9B6 looks like.

```
.text, #text, p{  
    color:#D6B9B6  
}
```

If you want to add a text shadow in that color use the text-shadow property, you can generate a text shadow directly with our [CSS Text Shadow Generator](#).

Here you see how black text with a 4 pixel #D6B9B6 colored shadow looks like.

```
.shadow{ text-shadow: 4px 4px 2px #D6B9B6
}
```

Border

The CSS property to change the border of an element to Decimal 14072246 is called "border". The border property can be set on classes, ids or directly on the HTML element.

This example shows the color as border, it can be applied via the CSS property "border" or "border-color".

```
.border, #border, table{ border:4px solid
#D6B9B6 }
```

If only the border color should be changed use the property `border-color`.

```
.border{ border-color:#D6B9B6 }
```

If you want to add a box shadow in that color use:

Here you see how a box with a 4 pixel #D6B9B6 colored shadow looks like.

```
.boxshadow{ -moz-box-shadow:4px 4px 4px  
4px #D6B9B6; -webkit-box-shadow:4px 4px  
4px 4px #D6B9B6; box-shadow:4px 4px 4px  
4px #D6B9B6 }
```

Background

The CSS property to change the background color of an element to Decimal 14072246 is called "background". The background property can be set on classes, ids or directly on the HTML element.

```
.background, #background, body{  
background:#D6B9B6 }
```

If only the background color should be changed can be used:

```
.background{ background-color:#D6B9B6 }
```

This example shows the color as background, it is applied via the CSS property "background".

To optimize and compress your CSS code, you can use our [online CSS compressor and optimizer](#) based on csstidy. If you want to create a linear or radial gradient as background or border, check our [CSS Gradient Generator](#).

Hey! You found this booklet interesting? Support Converting Colors with the new Membership Option!

The pro membership hides all ads, plus gives you double the colors in the color bucket, and more awesome pro features!

[Learn more, Memberships starting at \\$2.50/m!](#)

**Follow me
on Twitter!**

@ConvertingColor