

# Converting Colors

Decimal(14072491)

Have a look what the booklet for  
Decimal(14072491) contains.

<b>Decimal(14072491)</b> .....	3
<i><b>Conversions</b></i> .....	4
<i><b>Details</b></i> .....	6
<i><b>Harmonies</b></i> .....	11
<i><b>Previews</b></i> .....	23
<i><b>Color Blindness Simulation</b></i> .....	26
<i><b>CSS Examples</b></i> .....	29

# **Color**

**Decimal(14072491)**

# Conversions

## Conversions Part 1

Format	Color
Hex	D6BAAB
RGB	214, 186, 171
RGB Percent	84%, 73%, 67%
CMY	0.1608, 0.2706, 0.3294
CMYK	0.00, 0.13, 0.20, 0.16
HSL	21°, 34%, 75%
HSV	21°, 20%, 84%
XYZ	52.6411, 52.3542, 45.8590
YIQ	192.6620, 21.5030, 1.2710

# Conversions

## Conversions Part 2

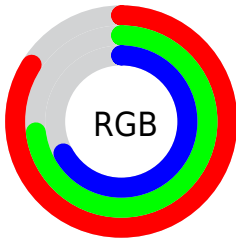
Format	Color
R <sub>Y</sub> B	214, 194, 171
Decimal	14072491
CIE Lab	77.49, 7.63, 11.28
CIE LCh	77, 13.615, 55.919
Yxy	52.3542, 0.3490, 0.3471
Android (android.graphics.Color)	4292262571 (0xFFD6BAAB)
YUV	192.6620, -10.6794, 18.7134
Hunter-Lab	72.3562, 3.2403, 13.0717

# Details

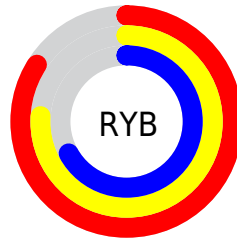
The Decimal color **14072491** is a light color, and the websafe version is hex **CCCCCC**. A complement of this color would be **11257814**, and the grayscale version is **12698049**.

A 20% lighter version of the original color is **16773858**, and **10454391** is the 20% darker color. If you saturate the color by 10%, you get **14068886**, and if you desaturate by 10%, it is **14076096**.

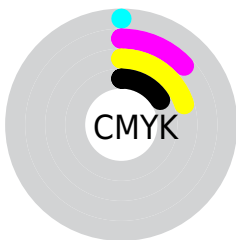
# Distribution



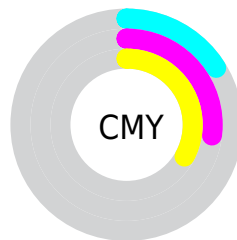
- Red (84%)
- Green (73%)
- Blue (67%)



- Red (84%)
- Yellow (76%)
- Blue (67%)



- Cyan (0%)
- Magenta (13%)
- Yellow (20%)
- Black (16%)



- Cyan (16%)
- Magenta (27%)
- Yellow (33%)

# Brightness & Saturation Gradients

These gradients show how the Decimal color 14072491 changes by changing the brightness by 10 percent. The first figure shows a shift by +10% for each color and the second figure -10%.

Similar to the brightness gradients but the following saturation gradients show a change of the Decimal color 14072491 by changing the saturation by 10% instead.



 14072491

 14072491

16777215

 12230544

 16773858

 10454391

 8678494

 7033670

 5389360

 3811099

 2429440

 0

 14072491

 14072491

 14068886

 14076096

 14065280

 14079702

 14061675

 14083307

 14058069

 14086911

 14054464

 14090239

 14050859

 14047253

 14043904

# Harmonies

## Analogous

The Analogous color harmony consists of three colors that are next to each other on the color wheel.



14399413



14072491



13418150

# Triad

The Triadic color harmony groups three colors that are evenly spaced from another and form a triangle on the color wheel.



14072491



10799037



12631510

# Complementary

The Complementary color scheme is a pair of colors which are on the opposite of each other on the color wheel.



14072491



11257814

# Split Complementary

Split-complementary colors differ from the complementary color scheme. The scheme consists of three colors, the original color and two neighbors of the complement color.



11583960



14072491



10471370

# Square

The Square scheme is like the rectangle color scheme, but the four colors are evenly spaced on the color wheel.



14072491



11519409



10798548



13547982

# Rectangle

The Rectangle color scheme consists of four colors that form a rectangle on the color wheel.



14072491



12829095



10798548



12238552



# Sweetspot

The Sweet Spot groups the original color and five complimentary colors.



14072491



16774640



14068680



8419959



0



8421504

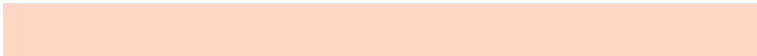


# Same Dimension

The Same Dimension uses a secret algorithm to generate beautiful new colors.



14072491



16766914



14077867



7038048



11222016



2821888

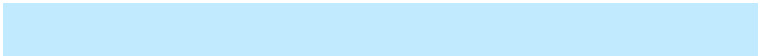


# Inverse Universe

The Inverse Universe completely reimagines the original color for something new.



11257814



12774143



11252438



6317931



28587



7211



# Previews

## White Background



This preview shows how the Decimal color 14072491 looks on a white background.

## Color Contrast Check

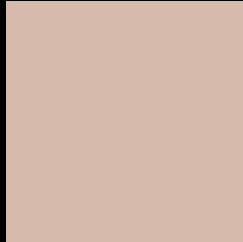
Large Text (above 18pt) WCAG AA × Fail

Any Text WCAG AA × Fail

Large Text (above 18pt) WCAG AAA × Fail

Any Text WCAG AAA × Fail

# Black Background



This preview shows how the Decimal color 14072491 looks on a black background.

## Color Contrast Check

Large Text (above 18pt) WCAG AA ✓ Pass

Any Text WCAG AA ✓ Pass

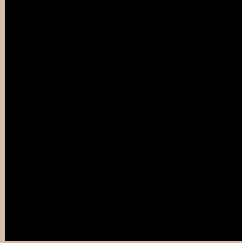
Large Text (above 18pt) WCAG AAA ✓ Pass

Any Text WCAG AAA ✓ Pass

If you want to check with other color combinations, try the [Color Contrast Checker](#).



## Decimal 14072491 Background



This preview shows how black text looks on a background with the Decimal color 14072491.



This preview shows how white text looks on a background with the Decimal color 14072491.

# Color Blindness Simulation

Color vision deficiency is a very complex topic, and I could not describe the different causes any better than Wikipedia does, so if you want to learn more, you should check out their [article about color blindness](#).


## Dichromacy



**Original Color**  
14072491

**Protanopia**  
13090734

**Deuteranopia**  
14334379



**Tritanopia**  
14268100

# Trichromacy



**Original Color**  
14072491

**Protanomaly**  
13417901

**Deuteranomaly**  
14268843

**Tritanomaly**  
14202811

# Monochromacy



**Original Color**  
14072491

**Achromatopsia**  
12698049

**Achromatomaly**  
13221561

# CSS Examples

## Text

The CSS property to change the color of the text to Decimal 14072491 is called "color". The color property can be set on classes, ids or directly on the HTML element.

This example shows how text in the color #D6BAAB looks like.

```
.text, #text, p{  
  color:#D6BAAB  
}
```

If you want to add a text shadow in that color use the text-shadow property, you can generate a text shadow directly with our [CSS Text Shadow Generator](#).

Here you see how black text with a 4 pixel #D6BAAB colored shadow looks like.

```
.shadow{ text-shadow: 4px 4px 2px #D6BAAB
}
```

## Border

The CSS property to change the border of an element to Decimal 14072491 is called "border". The border property can be set on classes, ids or directly on the HTML element.

This example shows the color as border, it can be applied via the CSS property "border" or "border-color".

```
.border, #border, table{ border:4px solid
#D6BAAB }
```

If only the border color should be changed use the property `border-color`.

```
.border{ border-color:#D6BAAB }
```

If you want to add a box shadow in that color use:

Here you see how a box with a 4 pixel #D6BAAB colored shadow looks like.

```
.boxshadow{ -moz-box-shadow:4px 4px 4px  
4px #D6BAAB; -webkit-box-shadow:4px 4px  
4px 4px #D6BAAB; box-shadow:4px 4px 4px  
4px #D6BAAB }
```

# Background

The CSS property to change the background color of an element to Decimal 14072491 is called "background". The background property can be set on classes, ids or directly on the HTML element.

```
.background, #background, body{  
background:#D6BAAB }
```

If only the background color should be changed can be used:

```
.background{ background-color:#D6BAAB }
```

This example shows the color as background, it is applied via the CSS property "background".

To optimize and compress your CSS code, you can use our [online CSS compressor and optimizer](#) based on csstidy. If you want to create a linear or radial gradient as background or border, check our [CSS Gradient Generator](#).



Hey! You found this booklet interesting? Support Converting Colors with the new Membership Option!

The pro membership hides all ads, plus gives you double the colors in the color bucket, and more awesome pro features!

**[Learn more, Memberships starting at \\$2.50/m!](#)**

**Follow me  
on Twitter!**

@ConvertingColor