

# Converting Colors

Decimal(14072769)

Have a look what the booklet for  
Decimal(14072769) contains.

<b>Decimal(14072769)</b> .....	3
<i><b>Conversions</b></i> .....	4
<i><b>Details</b></i> .....	6
<i><b>Harmonies</b></i> .....	11
<i><b>Previews</b></i> .....	23
<i><b>Color Blindness Simulation</b></i> .....	26
<i><b>CSS Examples</b></i> .....	29

# **Color**

**Decimal(14072769)**

# Conversions

## Conversions Part 1

Format	Color
Hex	D6BBC1
RGB	214, 187, 193
RGB Percent	84%, 73%, 76%
CMY	0.1608, 0.2667, 0.2431
CMYK	0.00, 0.13, 0.10, 0.16
HSL	347°, 25%, 79%
HSV	347°, 13%, 84%
XYZ	55.1275, 53.6870, 57.9092
YIQ	195.7570, 14.1660, 7.5900

# Conversions

## Conversions Part 2

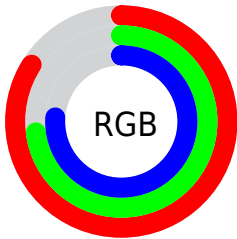
<b>Format</b>	<b>Color</b>
R <sub>Y</sub> B	214, 187, 193
Decimal	14072769
CIE Lab	78.28, 10.60, 0.51
CIE LCh	78, 10.616, 2.746
Yxy	53.6870, 0.3307, 0.3220
Android (android.graphics.Color)	4292262849 (0xFFD6BBC1)
YUV	195.7570, -1.3592, 15.9991
Hunter-Lab	73.2714, 6.0737, 4.4309

# Details

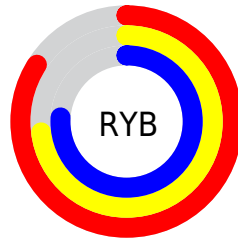
The Decimal color **14072769** is a light color, and the websafe version is hex **CCCCCC**. A complement of this color would be **12310224**, and the grayscale version is **12895428**.

A 20% lighter version of the original color is **16774137**, and **10454668** is the 20% darker color. If you saturate the color by 10%, you get **14067376**, and if you desaturate by 10%, it is **14078162**.

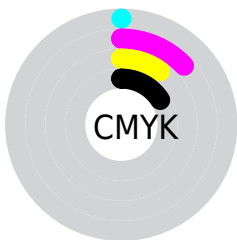
# Distribution



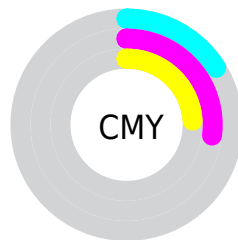
- Red (84%)
- Green (73%)
- Blue (76%)



- Red (84%)
- Yellow (73%)
- Blue (76%)



- Cyan (0%)
- Magenta (13%)
- Yellow (10%)
- Black (16%)



- Cyan (16%)
- Magenta (27%)
- Yellow (24%)

# Brightness & Saturation Gradients

These gradients show how the Decimal color 14072769 changes by changing the brightness by 10 percent. The first figure shows a shift by +10% for each color and the second figure -10%.

Similar to the brightness gradients but the following saturation gradients show a change of the Decimal color 14072769 by changing the saturation by 10% instead.



 14072769

 14072769

16777215

 12230822

 16774137

 10454668

 8744050

 7033946

 5455170

 3942188

 2429720

 524288

 0

 14072769

 14072769

 14067376

 14078162

 14061728

 14083810

 14056335

 14089203

 14050686

 14090239

 14045294

 14039901

 14034252

 14028860

 14024752

# Harmonies

## Analogous

The Analogous color harmony consists of three colors that are next to each other on the color wheel.



13679819



14072769



14138551

# Triad

The Triadic color harmony groups three colors that are evenly spaced from another and form a triangle on the color wheel.



14072769



12502193



11453907

# Complementary

The Complementary color scheme is a pair of colors which are on the opposite of each other on the color wheel.



14072769



12310224

# Split Complementary

Split-complementary colors differ from the complementary color scheme. The scheme consists of three colors, the original color and two neighbors of the complement color.



11126732



14072769



11782072

# Square

The Square scheme is like the rectangle color scheme, but the four colors are evenly spaced on the color wheel.



14072769



13222318



11258050



12174037

# Rectangle

The Rectangle color scheme consists of four colors that form a rectangle on the color wheel.



14072769



13942194



11258050



11323089



# Sweetspot

The Sweet Spot groups the original color and five complimentary colors.



14072769



16774647



13679574



8419707



0



8421504



# Same Dimension

The Same Dimension uses a secret algorithm to generate beautiful new colors.



14072769



16767457



14074555



7037027



11206694



2818058



# Inverse Universe

The Inverse Universe completely reimagines the original color for something new.



14072769



16767457



12308438



7037027



11206694



2818058



# Previews

## White Background



This preview shows how the Decimal color 14072769 looks on a white background.

## Color Contrast Check

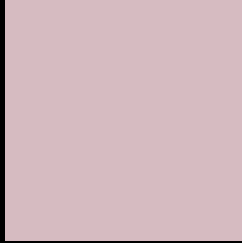
Large Text (above 18pt) WCAG AA × Fail

Any Text WCAG AA × Fail

Large Text (above 18pt) WCAG AAA × Fail

Any Text WCAG AAA × Fail

# Black Background



This preview shows how the Decimal color 14072769 looks on a black background.

## Color Contrast Check

Large Text (above 18pt) WCAG AA ✓ Pass

Any Text WCAG AA ✓ Pass

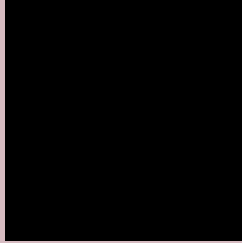
Large Text (above 18pt) WCAG AAA ✓ Pass

Any Text WCAG AAA ✓ Pass

If you want to check with other color combinations, try the [Color Contrast Checker](#).



## Decimal 14072769 Background



This preview shows how black text looks on a background with the Decimal color 14072769.




This preview shows how white text looks on a background with the Decimal color 14072769.

# Color Blindness Simulation

Color vision deficiency is a very complex topic, and I could not describe the different causes any better than Wikipedia does, so if you want to learn more, you should check out their [article about color blindness](#).

## Dichromacy





**Tritanopia**  
14138056

# Trichromacy



**Original Color**  
14072769

**Protanomaly**  
13352899

**Deuteranomaly**  
14007489

**Tritanomaly**  
14138053

# Monochromacy



**Original Color**  
14072769

**Achromatopsia**  
12895428

**Achromatomaly**  
13353411

# CSS Examples

## Text

The CSS property to change the color of the text to Decimal 14072769 is called "color". The color property can be set on classes, ids or directly on the HTML element.

This example shows how text in the color #D6BBC1 looks like.

```
.text, #text, p{  
    color:#D6BBC1  
}
```

If you want to add a text shadow in that color use the text-shadow property, you can generate a text shadow directly with our [CSS Text Shadow Generator](#).

Here you see how black text with a 4 pixel #D6BBC1 colored shadow looks like.

```
.shadow{ text-shadow: 4px 4px 2px #D6BBC1  
}
```

## Border

The CSS property to change the border of an element to Decimal 14072769 is called "border". The border property can be set on classes, ids or directly on the HTML element.

This example shows the color as border, it can be applied via the CSS property "border" or "border-color".

```
.border, #border, table{ border:4px solid  
#D6BBC1 }
```

If only the border color should be changed use the property `border-color`.

```
.border{ border-color:#D6BBC1 }
```

If you want to add a box shadow in that color use:

Here you see how a box with a 4 pixel #D6BBC1 colored shadow looks like.

```
.boxshadow{ -moz-box-shadow:4px 4px 4px  
4px #D6BBC1; -webkit-box-shadow:4px 4px  
4px 4px #D6BBC1; box-shadow:4px 4px 4px  
4px #D6BBC1 }
```

# Background

The CSS property to change the background color of an element to Decimal 14072769 is called "background". The background property can be set on classes, ids or directly on the HTML element.

```
.background, #background, body{  
background:#D6BBC1 }
```

If only the background color should be changed can be used:

```
.background{ background-color:#D6BBC1 }
```

This example shows the color as background, it is applied via the CSS property "background".

To optimize and compress your CSS code, you can use our [online CSS compressor and optimizer](#) based on csstidy. If you want to create a linear or radial gradient as background or border, check our [CSS Gradient Generator](#).



Hey! You found this booklet interesting? Support Converting Colors with the new Membership Option!

The pro membership hides all ads, plus gives you double the colors in the color bucket, and more awesome pro features!

**[Learn more, Memberships starting at \\$2.50/m!](#)**

**Follow me  
on Twitter!**

@ConvertingColor