

# Converting Colors

Decimal(14073277)

Have a look what the booklet for  
Decimal(14073277) contains.

<b>Decimal(14073277)</b> .....	3
<i><b>Conversions</b></i> .....	4
<i><b>Details</b></i> .....	6
<i><b>Harmonies</b></i> .....	11
<i><b>Previews</b></i> .....	23
<i><b>Color Blindness Simulation</b></i> .....	26
<i><b>CSS Examples</b></i> .....	29

# **Color**

**Decimal(14073277)**

# Conversions

## Conversions Part 1

Format	Color
Hex	D6BDBD
RGB	214, 189, 189
RGB Percent	84%, 74%, 74%
CMY	0.1608, 0.2588, 0.2588
CMYK	0.00, 0.12, 0.12, 0.16
HSL	0°, 23%, 79%
HSV	0°, 12%, 84%
XYZ	55.1145, 54.3655, 55.7329
YIQ	196.4750, 14.9000, 5.3000

# Conversions

## Conversions Part 2

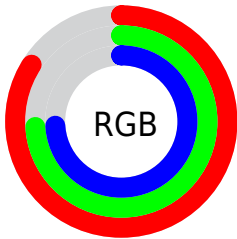
Format	Color
RYP	214, 189, 189
Decimal	14073277
CIELab	78.67, 8.87, 3.25
CIELCh	79, 9.442, 20.110
Yxy	54.3655, 0.3336, 0.3291
Android (android.graphics.Color)	4292263357 (0xFFD6BDBD)
YUV	196.4750, -3.6852, 15.3694
Hunter-Lab	73.7329, 4.3939, 6.7973

# Details

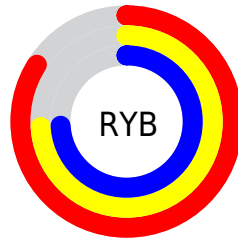
The Decimal color **14073277** is a light color, and the websafe version is hex **CCCCCC**. A complement of this color would be **12441302**, and the grayscale version is **12895428**.

A 20% lighter version of the original color is **16774645**, and **10455176** is the 20% darker color. If you saturate the color by 10%, you get **14067880**, and if you desaturate by 10%, it is **14078674**.

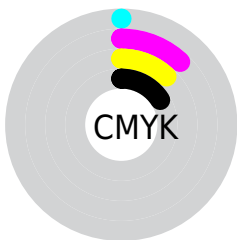
# Distribution



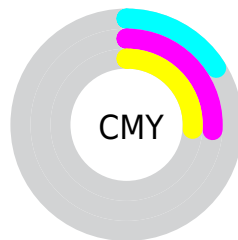
- Red (84%)
- Green (74%)
- Blue (74%)



- Red (84%)
- Yellow (74%)
- Blue (74%)



- Cyan (0%)
- Magenta (12%)
- Yellow (12%)
- Black (16%)



- Cyan (16%)
- Magenta (26%)
- Yellow (26%)

# Brightness & Saturation Gradients

These gradients show how the Decimal color 14073277 changes by changing the brightness by 10 percent. The first figure shows a shift by +10% for each color and the second figure -10%.

Similar to the brightness gradients but the following saturation gradients show a change of the Decimal color 14073277 by changing the saturation by 10% instead.



 14073277

 14073277

16777215

 12231330

 16774645

 10455176

 8744558

 7034454

 5455679

 3942697

 2429973

 524288

 0

 14073277

 14073277

 14067880

 14078674

 14062226

 14084328

 14056829

 14089725

 14051175

 14090239

 14045778

 14040381

 14034727

 14029330

 14024704

# Harmonies

## Analogous

The Analogous color harmony consists of three colors that are next to each other on the color wheel.



13876678



14073277



13942454

# Triad

The Triadic color harmony groups three colors that are evenly spaced from another and form a triangle on the color wheel.



14073277



12175031



11977940

# Complementary

The Complementary color scheme is a pair of colors which are on the opposite of each other on the color wheel.



14073277



12441302

# Split Complementary

Split-complementary colors differ from the complementary color scheme. The scheme consists of three colors, the original color and two neighbors of the complement color.



11519952



14073277



11651263

# Square

The Square scheme is like the rectangle color scheme, but the four colors are evenly spaced on the color wheel.



14073277



12895410



11389128



12698067

# Rectangle

The Rectangle color scheme consists of four colors that form a rectangle on the color wheel.



14073277



13680818



11389128



11847123

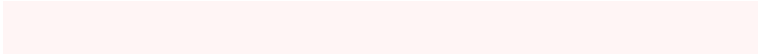


# Sweetspot

The Sweet Spot groups the original color and five complimentary colors.



14073277



16774645



14073302



8419705



0



8421504



# Same Dimension

The Same Dimension uses a secret algorithm to generate beautiful new colors.



14073277



16767963



14076605



7037024



11206656



2818048



# Inverse Universe

The Inverse Universe completely reimagines the original color for something new.



12441302



14417919



12438230



6318955



43947

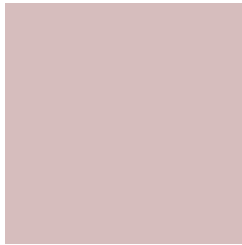


11051



# Previews

## White Background



This preview shows how the Decimal color 14073277 looks on a white background.

## Color Contrast Check

Large Text (above 18pt) WCAG AA × Fail

Any Text WCAG AA × Fail

Large Text (above 18pt) WCAG AAA × Fail

Any Text WCAG AAA × Fail

# Black Background



This preview shows how the Decimal color 14073277 looks on a black background.

## Color Contrast Check

Large Text (above 18pt) WCAG AA ✓ Pass

Any Text WCAG AA ✓ Pass

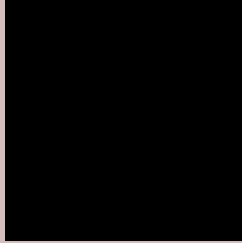
Large Text (above 18pt) WCAG AAA ✓ Pass

Any Text WCAG AAA ✓ Pass

If you want to check with other color combinations, try the [Color Contrast Checker](#).



## Decimal 14073277 Background



This preview shows how black text looks on a background with the Decimal color 14073277.



This preview shows how white text looks on a background with the Decimal color 14073277.

# Color Blindness Simulation

Color vision deficiency is a very complex topic, and I could not describe the different causes any better than Wikipedia does, so if you want to learn more, you should check out their [article about color blindness](#).


## Dichromacy



**Original Color**  
14073277

**Protanopia**  
13091520

**Deuteranopia**  
14204093



**Tritanopia**  
14203850

# Trichromacy



**Original Color**  
14073277

**Protanomaly**  
13418687

**Deuteranomaly**  
14138557

**Tritanomaly**  
14138565

# Monochromacy



**Original Color**  
14073277

**Achromatopsia**  
12895428

**Achromatomaly**  
13353409

# CSS Examples

## Text

The CSS property to change the color of the text to Decimal 14073277 is called "color". The color property can be set on classes, ids or directly on the HTML element.

This example shows how text in the color #D6BDBD looks like.

```
.text, #text, p{  
    color:#D6BDBD  
}
```

If you want to add a text shadow in that color use the text-shadow property, you can generate a text shadow directly with our [CSS Text Shadow Generator](#).

Here you see how black text with a 4 pixel #D6BDBD colored shadow looks like.

```
.shadow{ text-shadow: 4px 4px 2px #D6BDBD
}
```

## Border

The CSS property to change the border of an element to Decimal 14073277 is called "border". The border property can be set on classes, ids or directly on the HTML element.

This example shows the color as border, it can be applied via the CSS property "border" or "border-color".

```
.border, #border, table{ border:4px solid
#D6BDBD }
```

If only the border color should be changed use the property `border-color`.

```
.border{ border-color:#D6BDBD }
```

If you want to add a box shadow in that color use:

Here you see how a box with a 4 pixel #D6BDBD colored shadow looks like.

```
.boxshadow{ -moz-box-shadow:4px 4px 4px  
4px #D6BDBD; -webkit-box-shadow:4px 4px  
4px 4px #D6BDBD; box-shadow:4px 4px 4px  
4px #D6BDBD }
```

# Background

The CSS property to change the background color of an element to Decimal 14073277 is called "background". The background property can be set on classes, ids or directly on the HTML element.

```
.background, #background, body{  
background:#D6BDBD }
```

If only the background color should be changed can be used:

```
.background{ background-color:#D6BDBD }
```

This example shows the color as background, it is applied via the CSS property "background".

To optimize and compress your CSS code, you can use our [online CSS compressor and optimizer](#) based on csstidy. If you want to create a linear or radial gradient as background or border, check our [CSS Gradient Generator](#).



Hey! You found this booklet interesting? Support Converting Colors with the new Membership Option!

The pro membership hides all ads, plus gives you double the colors in the color bucket, and more awesome pro features!

**[Learn more, Memberships starting at \\$2.50/m!](#)**

**Follow me  
on Twitter!**

@ConvertingColor