

# Converting Colors

Decimal(14074818)

Have a look what the booklet for  
Decimal(14074818) contains.

<b>Decimal(14074818)</b> .....	3
<i><b>Conversions</b></i> .....	4
<i><b>Details</b></i> .....	6
<i><b>Harmonies</b></i> .....	11
<i><b>Previews</b></i> .....	23
<i><b>Color Blindness Simulation</b></i> .....	26
<i><b>CSS Examples</b></i> .....	29

# **Color**

**Decimal(14074818)**

# Conversions

## Conversions Part 1

Format	Color
Hex	D6C3C2
RGB	214, 195, 194
RGB Percent	84%, 76%, 76%
CMY	0.1608, 0.2353, 0.2392
CMYK	0.00, 0.09, 0.09, 0.16
HSL	3°, 20%, 80%
HSV	3°, 9%, 84%
XYZ	56.9843, 57.2214, 59.0804
YIQ	200.5670, 11.6450, 3.7170

# Conversions

## Conversions Part 2

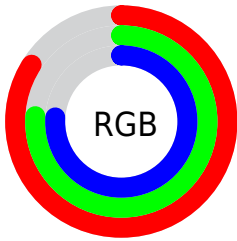
Format	Color
R <sub>Y</sub> B	214, 195, 194
Decimal	14074818
CIE Lab	80.30, 6.50, 2.91
CIE LCh	80, 7.128, 24.138
Yxy	57.2214, 0.3288, 0.3302
Android (android.graphics.Color)	4292264898 (0xFFD6C3C2)
YUV	200.5670, -3.2375, 11.7807
Hunter-Lab	75.6448, 2.0880, 6.6445

# Details

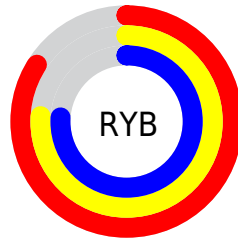
The Decimal color **14074818** is a light color, and the websafe version is hex **CCCCCC**. A complement of this color would be **12768726**, and the grayscale version is **13224393**.

A 20% lighter version of the original color is **16776442**, and **10456460** is the 20% darker color. If you saturate the color by 10%, you get **14069677**, and if you desaturate by 10%, it is **14079959**.

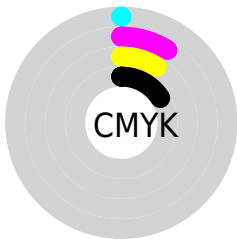
# Distribution



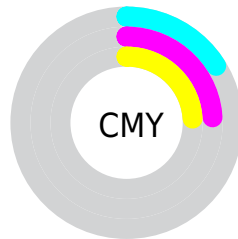
- Red (84%)
- Green (76%)
- Blue (76%)



- Red (84%)
- Yellow (76%)
- Blue (76%)



- Cyan (0%)
- Magenta (9%)
- Yellow (9%)
- Black (16%)



- Cyan (16%)
- Magenta (24%)
- Yellow (24%)

# Brightness & Saturation Gradients

These gradients show how the Decimal color 14074818 changes by changing the brightness by 10 percent. The first figure shows a shift by +10% for each color and the second figure -10%.

Similar to the brightness gradients but the following saturation gradients show a change of the Decimal color 14074818 by changing the saturation by 10% instead.



 14074818

 14074818

16777215

 12232871

 16776442

 10456460

 8746099

 7101274

 5456963

 3943981

 2496792

 1114112

 0

 14074818

 14074818

 14069677

 14079959

 14064279

 14085357

 14059138

 14090239

 14053996

 14048599

 14043458

 14038316

 14032919

 14027777

# Harmonies

## Analogous

The Analogous color harmony consists of three colors that are next to each other on the color wheel.



13943753



14074818



13943997

# Triad

The Triadic color harmony groups three colors that are evenly spaced from another and form a triangle on the color wheel.



14074818



12569279



12568788

# Complementary

The Complementary color scheme is a pair of colors which are on the opposite of each other on the color wheel.



14074818



12768726

# Split Complementary

Split-complementary colors differ from the complementary color scheme. The scheme consists of three colors, the original color and two neighbors of the complement color.



12176082



14074818



12176326

# Square

The Square scheme is like the rectangle color scheme, but the four colors are evenly spaced on the color wheel.



14074818



13093051



12045260



13092563

# Rectangle

The Rectangle color scheme consists of four colors that form a rectangle on the color wheel.



14074818



13682363



12045260



12437972



# Sweetspot

The Sweet Spot groups the original color and five complimentary colors.



14074818



16775415



14074581



8420218



0



8421504



# Same Dimension

The Same Dimension uses a secret algorithm to generate beautiful new colors.



14074818



16770275



14077378



7037280



11208960



2818560

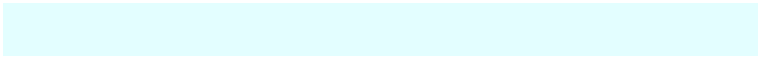


# Inverse Universe

The Inverse Universe completely reimagines the original color for something new.



12768726



14941951



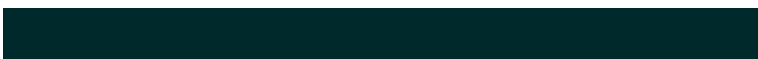
12766166



6318955



41643

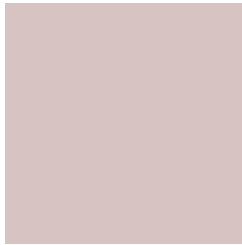


10539



# Previews

## White Background



This preview shows how the Decimal color 14074818 looks on a white background.

## Color Contrast Check

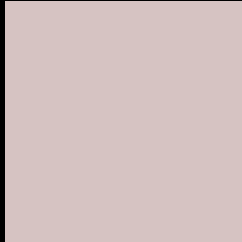
Large Text (above 18pt) WCAG AA × Fail

Any Text WCAG AA × Fail

Large Text (above 18pt) WCAG AAA × Fail

Any Text WCAG AAA × Fail

# Black Background



This preview shows how the Decimal color 14074818 looks on a black background.

## Color Contrast Check

Large Text (above 18pt) WCAG AA ✓ Pass

Any Text WCAG AA ✓ Pass

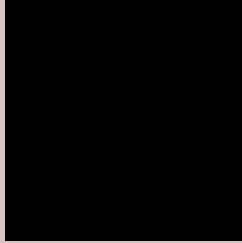
Large Text (above 18pt) WCAG AAA ✓ Pass

Any Text WCAG AAA ✓ Pass

If you want to check with other color combinations, try the [Color Contrast Checker](#).



## Decimal 14074818 Background



This preview shows how black text looks on a background with the Decimal color 14074818.




This preview shows how white text looks on a background with the Decimal color 14074818.

# Color Blindness Simulation

Color vision deficiency is a very complex topic, and I could not describe the different causes any better than Wikipedia does, so if you want to learn more, you should check out their [article about color blindness](#).

## Dichromacy





**Tritanopia**  
14205392

# Trichromacy



**Original Color**  
14074818

**Protanomaly**  
13682115

**Deuteranomaly**  
14336706

**Tritanomaly**  
14140107

# Monochromacy



**Original Color**  
14074818

**Achromatopsia**  
13224393

**Achromatomaly**  
13551558

# CSS Examples

## Text

The CSS property to change the color of the text to Decimal 14074818 is called "color". The color property can be set on classes, ids or directly on the HTML element.

This example shows how text in the color #D6C3C2 looks like.

```
.text, #text, p{  
    color:#D6C3C2  
}
```

If you want to add a text shadow in that color use the text-shadow property, you can generate a text shadow directly with our [CSS Text Shadow Generator](#).

Here you see how black text with a 4 pixel #D6C3C2 colored shadow looks like.

```
.shadow{ text-shadow: 4px 4px 2px #D6C3C2
}
```

## Border

The CSS property to change the border of an element to Decimal 14074818 is called "border". The border property can be set on classes, ids or directly on the HTML element.

This example shows the color as border, it can be applied via the CSS property "border" or "border-color".

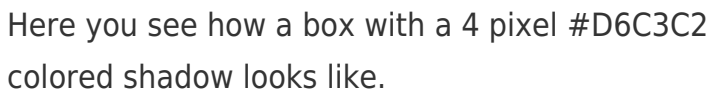
```
.border, #border, table{ border:4px solid
#D6C3C2 }
```

If only the border color should be changed use the property `border-color`.

```
.border{ border-color:#D6C3C2 }
```

If you want to add a box shadow in that color use:

Here you see how a box with a 4 pixel #D6C3C2 colored shadow looks like.



```
.boxshadow{ -moz-box-shadow:4px 4px 4px  
4px #D6C3C2; -webkit-box-shadow:4px 4px  
4px 4px #D6C3C2; box-shadow:4px 4px 4px  
4px #D6C3C2 }
```

# Background

The CSS property to change the background color of an element to Decimal 14074818 is called "background". The background property can be set on classes, ids or directly on the HTML element.

```
.background, #background, body{  
background:#D6C3C2 }
```

If only the background color should be changed can be used:

```
.background{ background-color:#D6C3C2 }
```

This example shows the color as background, it is applied via the CSS property "background".

To optimize and compress your CSS code, you can use our [online CSS compressor and optimizer](#) based on csstidy. If you want to create a linear or radial gradient as background or border, check our [CSS Gradient Generator](#).



Hey! You found this booklet interesting? Support Converting Colors with the new Membership Option!

The pro membership hides all ads, plus gives you double the colors in the color bucket, and more awesome pro features!

**[Learn more, Memberships starting at \\$2.50/m!](#)**

**Follow me  
on Twitter!**

@ConvertingColor