

Converting Colors

Decimal(14075590)

Have a look what the booklet for
Decimal(14075590) contains.

Decimal(14075590)	3
<i>Conversions</i>	4
<i>Details</i>	6
<i>Harmonies</i>	11
<i>Previews</i>	23
<i>Color Blindness Simulation</i>	26
<i>CSS Examples</i>	29

Color

Decimal(14075590)

Conversions

Conversions Part 1

Format	Color
Hex	D6C6C6
RGB	214, 198, 198
RGB Percent	84%, 78%, 78%
CMY	0.1608, 0.2235, 0.2235
CMYK	0.00, 0.07, 0.07, 0.16
HSL	0°, 16%, 81%
HSV	0°, 7%, 84%
XYZ	58.1187, 58.7615, 61.7050
YIQ	202.7840, 9.5360, 3.3920

Conversions

Conversions Part 2

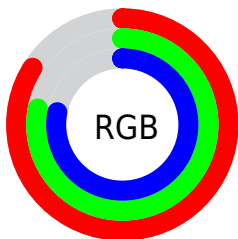
Format	Color
R _Y B	214, 198, 198
Decimal	14075590
CIE Lab	81.16, 5.59, 2.01
CIE LCh	81, 5.943, 19.774
Yxy	58.7615, 0.3254, 0.3290
Android (android.graphics.Color)	4292265670 (0xFFD6C6C6)
YUV	202.7840, -2.3585, 9.8364
Hunter-Lab	76.6561, 1.1860, 5.9332

Details

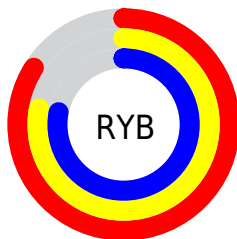
The Decimal color **14075590** is a light color, and the websafe version is hex **CCCCCC**. A complement of this color would be **13031126**, and the grayscale version is **13355979**.

A 20% lighter version of the original color is **16777215**, and **10457232** is the 20% darker color. If you saturate the color by 10%, you get **14070193**, and if you desaturate by 10%, it is **14080987**.

Distribution



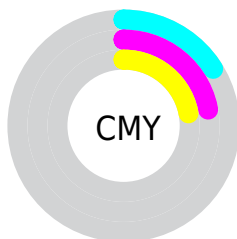
- Red (84%)
- Green (78%)
- Blue (78%)



- Red (84%)
- Yellow (78%)
- Blue (78%)



- Cyan (0%)
- Magenta (7%)
- Yellow (7%)
- Black (16%)



- Cyan (16%)
- Magenta (22%)
- Yellow (22%)

Brightness & Saturation Gradients

These gradients show how the Decimal color 14075590 changes by changing the brightness by 10 percent. The first figure shows a shift by +10% for each color and the second figure -10%.

Similar to the brightness gradients but the following saturation gradients show a change of the Decimal color 14075590 by changing the saturation by 10% instead.

■ 14075590

16777215

■ 14075590

■ 12233643

■ 10457232

■ 8746871

■ 7102046

■ 5457478

■ 3944496

■ 2497307

■ 1245184

■ 0

 14075590

 14075590

 14070193

 14080987

 14064539

 14086641

 14059142

 14090239

 14053488

 14048091

 14042694

 14037040

 14031643

 14025989

Harmonies

Analogous

The Analogous color harmony consists of three colors that are next to each other on the color wheel.



13944524



14075590



14010305

Triad

The Triadic color harmony groups three colors that are evenly spaced from another and form a triangle on the color wheel.



14075590



12897474



12766164

Complementary

The Complementary color scheme is a pair of colors which are on the opposite of each other on the color wheel.



14075590



13031126

Split Complementary

Split-complementary colors differ from the complementary color scheme. The scheme consists of three colors, the original color and two neighbors of the complement color.



12438738



14075590



12570055

Square

The Square scheme is like the rectangle color scheme, but the four colors are evenly spaced on the color wheel.



14075590



13290175



12373453



13158868

Rectangle

The Rectangle color scheme consists of four colors that form a rectangle on the color wheel.



14075590



13813951



12373453



12635092

Sweetspot

The Sweet Spot groups the original color and five complimentary colors.



14075590



16775930



14075606



8420733



0



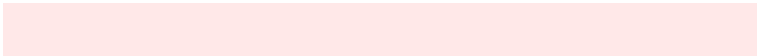
8421504

Same Dimension

The Same Dimension uses a secret algorithm to generate beautiful new colors.



14075590



16771304



14077638



7037024



11206656



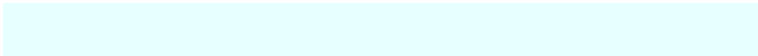
2818048

Inverse Universe

The Inverse Universe completely reimagines the original color for something new.



13031126



15269887



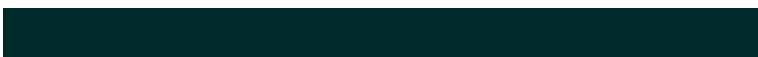
13029078



6318955



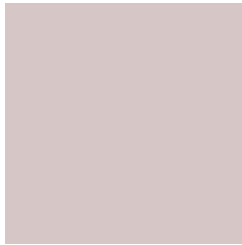
43947



11051

Previews

White Background



This preview shows how the Decimal color 14075590 looks on a white background.

Color Contrast Check

Large Text (above 18pt) WCAG AA × Fail

Any Text WCAG AA × Fail

Large Text (above 18pt) WCAG AAA × Fail

Any Text WCAG AAA × Fail

Black Background



This preview shows how the Decimal color 14075590 looks on a black background.

Color Contrast Check

Large Text (above 18pt) WCAG AA ✓ Pass

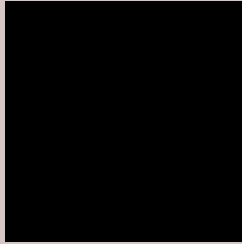
Any Text WCAG AA ✓ Pass

Large Text (above 18pt) WCAG AAA ✓ Pass

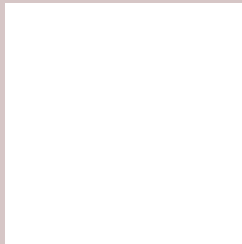
Any Text WCAG AAA ✓ Pass

If you want to check with other color combinations, try the [Color Contrast Checker](#).

Decimal 14075590 Background



This preview shows how black text looks on a background with the Decimal color 14075590.



This preview shows how white text looks on a background with the Decimal color 14075590.

Color Blindness Simulation

Color vision deficiency is a very complex topic, and I could not describe the different causes any better than Wikipedia does, so if you want to learn more, you should check out their [article about color blindness](#).

Dichromacy



Original Color
14075590

Protanopia
13552072

Deuteranopia
14599111



Tritanopia
14206163

Trichromacy



Original Color
14075590

Protanomaly
13748423

Deuteranomaly
14402759

Tritanomaly
14140878

Monochromacy



Original Color
14075590

Achromatopsia
13355979

Achromatomaly
13617609

CSS Examples

Text

The CSS property to change the color of the text to Decimal 14075590 is called "color". The color property can be set on classes, ids or directly on the HTML element.

This example shows how text in the color #D6C6C6 looks like.

```
.text, #text, p{  
  color:#D6C6C6  
}
```

If you want to add a text shadow in that color use the text-shadow property, you can generate a text shadow directly with our [CSS Text Shadow Generator](#).

Here you see how black text with a 4 pixel #D6C6C6 colored shadow looks like.

```
.shadow{ text-shadow: 4px 4px 2px #D6C6C6
}
```

Border

The CSS property to change the border of an element to Decimal 14075590 is called "border". The border property can be set on classes, ids or directly on the HTML element.

This example shows the color as border, it can be applied via the CSS property "border" or "border-color".

```
.border, #border, table{ border:4px solid
#D6C6C6 }
```

If only the border color should be changed use the property `border-color`.

```
.border{ border-color:#D6C6C6 }
```

If you want to add a box shadow in that color use:

Here you see how a box with a 4 pixel #D6C6C6 colored shadow looks like.

```
.boxshadow{ -moz-box-shadow:4px 4px 4px  
4px #D6C6C6; -webkit-box-shadow:4px 4px  
4px 4px #D6C6C6; box-shadow:4px 4px 4px  
4px #D6C6C6 }
```

Background

The CSS property to change the background color of an element to Decimal 14075590 is called "background". The background property can be set on classes, ids or directly on the HTML element.

```
.background, #background, body{  
background:#D6C6C6 }
```

If only the background color should be changed can be used:

```
.background{ background-color:#D6C6C6 }
```

This example shows the color as background, it is applied via the CSS property "background".

To optimize and compress your CSS code, you can use our [online CSS compressor and optimizer](#) based on csstidy. If you want to create a linear or radial gradient as background or border, check our [CSS Gradient Generator](#).

Hey! You found this booklet interesting? Support Converting Colors with the new Membership Option!

The pro membership hides all ads, plus gives you double the colors in the color bucket, and more awesome pro features!

[Learn more, Memberships starting at \\$2.50/m!](#)

**Follow me
on Twitter!**

@ConvertingColor