

Converting Colors

Decimal(14105204)

Have a look what the booklet for
Decimal(14105204) contains.

Decimal(14105204)	3
<i>Conversions</i>	4
<i>Details</i>	6
<i>Harmonies</i>	11
<i>Previews</i>	23
<i>Color Blindness Simulation</i>	26
<i>CSS Examples</i>	29

Color

Decimal(14105204)

Conversions

Conversions Part 1

Format	Color
Hex	D73A74
RGB	215, 58, 116
RGB Percent	84%, 23%, 45%
CMY	0.1569, 0.7725, 0.5451
CMYK	0.00, 0.73, 0.46, 0.16
HSL	338°, 66%, 54%
HSV	338°, 73%, 84%
XYZ	32.6898, 18.7341, 18.4161
YIQ	111.5550, 74.9540, 51.3220

Conversions

Conversions Part 2

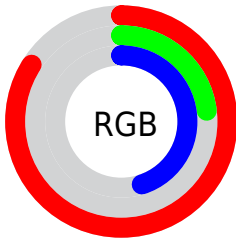
Format	Color
R_{YB}	215, 58, 116
Decimal	14105204
CIE _{Lab}	50.37, 64.22, 3.83
CIE _{LCh}	50, 64.333, 3.416
Yxy	18.7341, 0.4681, 0.2682
Android (android.graphics.Color)	4292295284 (0xFFD73A74)
YUV	111.5550, 2.1914, 90.7213
Hunter-Lab	43.2830, 59.0683, 5.0713

Details

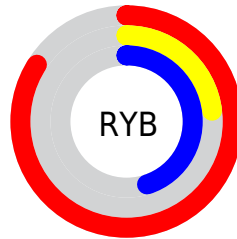
The Decimal color **14105204** is a dark color, and the websafe version is hex **CC3366**. The color can be described as dark muted rose. A complement of this color would be **3856285**, and the grayscale version is **7303023**.

A 20% lighter version of the original color is **16741800**, and **10158148** is the 20% darker color. If you saturate the color by 10%, you get **14099558**, and if you desaturate by 10%, it is **14110594**.

Distribution



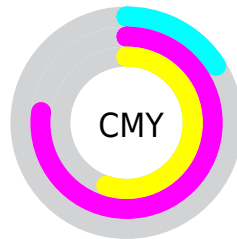
- Red (84%)
- Green (23%)
- Blue (45%)



- Red (84%)
- Yellow (23%)
- Blue (45%)



- Cyan (0%)
- Magenta (73%)
- Yellow (46%)
- Black (16%)



- Cyan (16%)
- Magenta (77%)
- Yellow (55%)

Brightness & Saturation Gradients

These gradients show how the Decimal color 14105204 changes by changing the brightness by 10 percent. The first figure shows a shift by +10% for each color and the second figure -10%.

Similar to the brightness gradients but the following saturation gradients show a change of the Decimal color 14105204 by changing the saturation by 10% instead.


 14105204

 14105204

16777215

 12129116

 16741800

 10158148

 16749251

 8192046

 16756703

 6291482

 16764155

 4521987

 16771583

 2359297

 0

 14105204

 14105204

 14099558

 14110594


 14094169

 14116239

 14090319

 14121629

 14127274

 14132664

 14138309

 14143955

 14149344

 14154990

Harmonies

Analogous

The Analogous color harmony consists of three colors that are next to each other on the color wheel.



12470954



14105204



13781055

Triad

The Triadic color harmony groups three colors that are evenly spaced from another and form a triangle on the color wheel.



14105204



5408258



35546

Complementary

The Complementary color scheme is a pair of colors which are on the opposite of each other on the color wheel.



14105204



3856285

Split Complementary

Split-complementary colors differ from the complementary color scheme. The scheme consists of three colors, the original color and two neighbors of the complement color.



37043



14105204



36164

Square

The Square scheme is like the rectangle color scheme, but the four colors are evenly spaced on the color wheel.



14105204



9140224



36989



32230

Rectangle

The Rectangle color scheme consists of four colors that form a rectangle on the color wheel.



14105204



12737052



36989



36304

Sweetspot

The Sweet Spot groups the original color and five complimentary colors.



14105204



16762844



10173143



8412779



0



8421504

Same Dimension

The Same Dimension uses a secret algorithm to generate beautiful new colors.



14105204



16719729



14109754



7037028



11206719



2818064

Inverse Universe

The Inverse Universe completely reimagines the original color for something new.



14105204



16719729



3851735



7037028



11206719



2818064

Previews

White Background



This preview shows how the Decimal color 14105204 looks on a white background.

Color Contrast Check

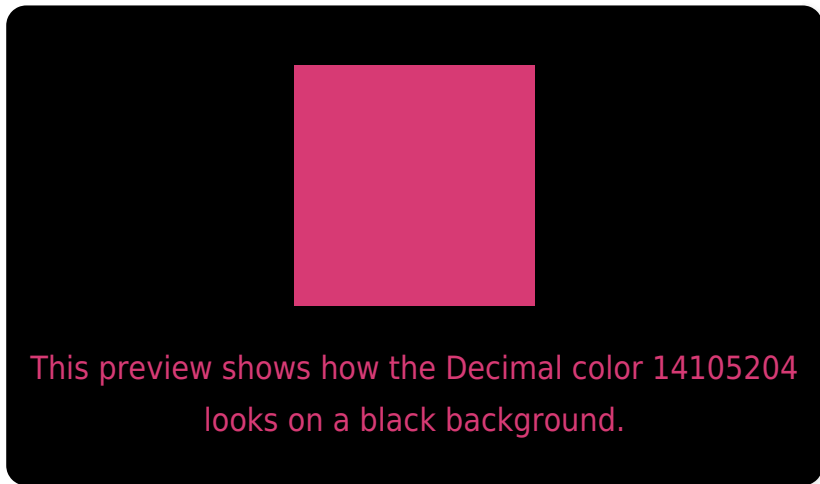
Large Text (above 18pt) WCAG AA ✓ Pass

Any Text WCAG AA × Fail

Large Text (above 18pt) WCAG AAA × Fail

Any Text WCAG AAA × Fail

Black Background



Color Contrast Check

Large Text (above 18pt) WCAG AA ✓ Pass

Any Text WCAG AA ✓ Pass

Large Text (above 18pt) WCAG AAA ✓ Pass

Any Text WCAG AAA × Fail

If you want to check with other color combinations, try the [Color Contrast Checker](#).

Decimal 14105204 Background



This preview shows how black text looks on a background with the Decimal color 14105204.




This preview shows how white text looks on a background with the Decimal color 14105204.

Color Blindness Simulation

Color vision deficiency is a very complex topic, and I could not describe the different causes any better than Wikipedia does, so if you want to learn more, you should check out their [article about color blindness](#).

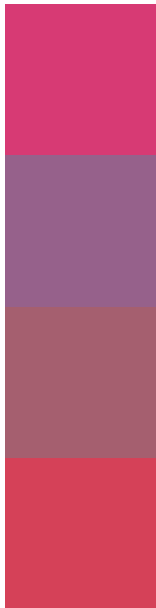
Dichromacy





Tritanopia
13911368

Trichromacy



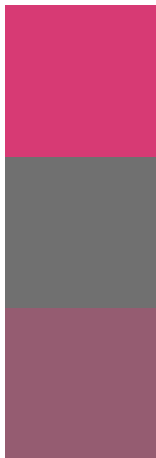
Original Color
14105204

Protanomaly
9855371

Deuteranomaly
10837871

Tritanomaly
13975896

Monochromacy



Original Color
14105204

Achromatopsia
7368816

Achromatomaly
9788529

CSS Examples

Text

The CSS property to change the color of the text to Decimal 14105204 is called "color". The color property can be set on classes, ids or directly on the HTML element.

This example shows how text in the color #D73A74 looks like.

```
.text, #text, p{  
  color:#D73A74  
}
```

If you want to add a text shadow in that color use the text-shadow property, you can generate a text shadow directly with our [CSS Text Shadow Generator](#).

Here you see how black text with a 4 pixel #D73A74 colored shadow looks like.

```
.shadow{ text-shadow: 4px 4px 2px #D73A74
}
```

Border

The CSS property to change the border of an element to Decimal 14105204 is called "border". The border property can be set on classes, ids or directly on the HTML element.

This example shows the color as border, it can be applied via the CSS property "border" or "border-color".

```
.border, #border, table{ border:4px solid
#D73A74 }
```

If only the border color should be changed use the property `border-color`.

```
.border{ border-color:#D73A74 }
```

If you want to add a box shadow in that color use:

Here you see how a box with a 4 pixel #D73A74 colored shadow looks like.

```
.boxshadow{ -moz-box-shadow:4px 4px 4px  
4px #D73A74; -webkit-box-shadow:4px 4px  
4px 4px #D73A74; box-shadow:4px 4px 4px  
4px #D73A74 }
```

Background

The CSS property to change the background color of an element to Decimal 14105204 is called "background". The background property can be set on classes, ids or directly on the HTML element.

```
.background, #background, body{  
background:#D73A74 }
```

If only the background color should be changed can be used:

```
.background{ background-color:#D73A74 }
```

This example shows the color as background, it is applied via the CSS property "background".

To optimize and compress your CSS code, you can use our [online CSS compressor and optimizer](#) based on csstidy. If you want to create a linear or radial gradient as background or border, check our [CSS Gradient Generator](#).

Hey! You found this booklet interesting? Support Converting Colors with the new Membership Option!

The pro membership hides all ads, plus gives you double the colors in the color bucket, and more awesome pro features!

[Learn more, Memberships starting at \\$2.50/m!](#)

**Follow me
on Twitter!**

@ConvertingColor