

Converting Colors

Decimal(14119071)

Have a look what the booklet for
Decimal(14119071) contains.

Decimal(14119071)	3
<i>Conversions</i>	4
<i>Details</i>	6
<i>Harmonies</i>	11
<i>Previews</i>	23
<i>Color Blindness Simulation</i>	26
<i>CSS Examples</i>	29

Color

Decimal(14119071)

Conversions

Conversions Part 1

Format	Color
Hex	D7709F
RGB	215, 112, 159
RGB Percent	84%, 44%, 62%
CMY	0.1569, 0.5608, 0.3765
CMYK	0.00, 0.48, 0.26, 0.16
HSL	333°, 56%, 64%
HSV	333°, 48%, 84%
XYZ	40.0765, 28.5386, 36.1971
YIQ	148.1550, 46.3010, 36.4530

Conversions

Conversions Part 2

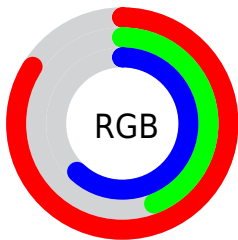
Format	Color
R _Y B	215, 112, 159
Decimal	14119071
CIE Lab	60.37, 45.74, -6.87
CIE LCh	60, 46.256, 351.456
Yxy	28.5386, 0.3824, 0.2723
Android (android.graphics.Color)	4292309151 (0xFFD7709F)
YUV	148.1550, 5.3466, 58.6231
Hunter-Lab	53.4215, 40.4219, -2.7784

Details

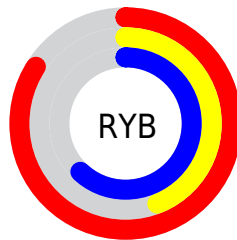
The Decimal color **14119071** is a light color, and the websafe version is hex **CC6699**. A complement of this color would be **7395240**, and the grayscale version is **9737364**.

A 20% lighter version of the original color is **16754390**, and **10369900** is the 20% darker color. If you saturate the color by 10%, you get **14113683**, and if you desaturate by 10%, it is **14124715**.

Distribution



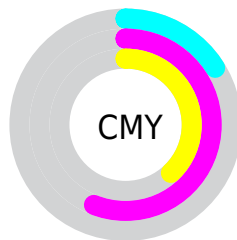
- Red (84%)
- Green (44%)
- Blue (62%)



- Red (84%)
- Yellow (44%)
- Blue (62%)



- Cyan (0%)
- Magenta (48%)
- Yellow (26%)
- Black (16%)




- Cyan (16%)
- Magenta (56%)
- Yellow (38%)

Brightness & Saturation Gradients

These gradients show how the Decimal color 14119071 changes by changing the brightness by 10 percent. The first figure shows a shift by +10% for each color and the second figure -10%.

Similar to the brightness gradients but the following saturation gradients show a change of the Decimal color 14119071 by changing the saturation by 10% instead.

 14119071

 14119071

16777215

 12211845

 16754390

 10369900

 16761586

 8527955

 16769023

 6750268

 16776447

 4980775

 3473426

 720896

 0

 14119071

 14119071

 14113683

 14124715

 14108040

 14130102

 14102652

 14135746

 14097008

 14141134

 14091621

 14146777

 14090338

 14152165

 14155761

 14155773

 14155775

Harmonies

Analogous

The Analogous color harmony consists of three colors that are next to each other on the color wheel.



12155845



14119071



14578038

Triad

The Triadic color harmony groups three colors that are evenly spaced from another and form a triangle on the color wheel.



14119071



9279554



41680

Complementary

The Complementary color scheme is a pair of colors which are on the opposite of each other on the color wheel.



14119071



7395240

Split Complementary

Split-complementary colors differ from the complementary color scheme. The scheme consists of three colors, the original color and two neighbors of the complement color.



42670



14119071



6070621

Square

The Square scheme is like the rectangle color scheme, but the four colors are evenly spaced on the color wheel.



14119071



11766591



42372



1415650

Rectangle

The Rectangle color scheme consists of four colors that form a rectangle on the color wheel.



14119071



14121053



42372



42182

Sweetspot

The Sweet Spot groups the original color and five complimentary colors.



14119071



16767980



10973399



8415860



0



8421504

Same Dimension

The Same Dimension uses a secret algorithm to generate beautiful new colors.



14119071



16740016



14119792



7037029



11206734



2818068

Inverse Universe

The Inverse Universe completely reimagines the original color for something new.



14119071



16740016



7394519



7037029



11206734



2818068

Previews

White Background



This preview shows how the Decimal color 14119071 looks on a white background.

Color Contrast Check

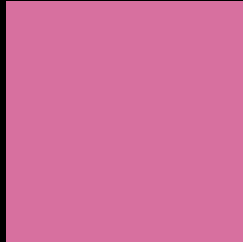
Large Text (above 18pt) WCAG AA ✓ Pass

Any Text WCAG AA × Fail

Large Text (above 18pt) WCAG AAA × Fail

Any Text WCAG AAA × Fail

Black Background



This preview shows how the Decimal color 14119071 looks on a black background.

Color Contrast Check

Large Text (above 18pt) WCAG AA ✓ Pass

Any Text WCAG AA ✓ Pass

Large Text (above 18pt) WCAG AAA ✓ Pass

Any Text WCAG AAA × Fail

If you want to check with other color combinations, try the [Color Contrast Checker](#).

Decimal 14119071 Background



This preview shows how black text looks on a background with the Decimal color 14119071.




This preview shows how white text looks on a background with the Decimal color 14119071.

Color Blindness Simulation

Color vision deficiency is a very complex topic, and I could not describe the different causes any better than Wikipedia does, so if you want to learn more, you should check out their [article about color blindness](#).

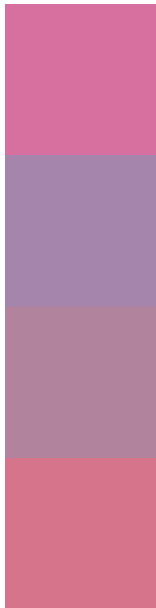
Dichromacy





Tritanopia
13923967

Trichromacy



Original Color
14119071

Protanomaly
10913196

Deuteranomaly
11699100

Tritanomaly
13989003

Monochromacy



Original Color
14119071

Achromatopsia
9737364

Achromatomaly
11306904

CSS Examples

Text

The CSS property to change the color of the text to Decimal 14119071 is called "color". The color property can be set on classes, ids or directly on the HTML element.

This example shows how text in the color #D7709F looks like.

```
.text, #text, p{  
  color:#D7709F  
}
```

If you want to add a text shadow in that color use the text-shadow property, you can generate a text shadow directly with our [CSS Text Shadow Generator](#).

Here you see how black text with a 4 pixel #D7709F colored shadow looks like.

```
.shadow{ text-shadow: 4px 4px 2px #D7709F
}
```

Border

The CSS property to change the border of an element to Decimal 14119071 is called "border". The border property can be set on classes, ids or directly on the HTML element.

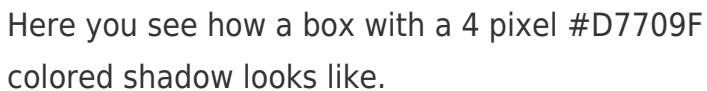
This example shows the color as border, it can be applied via the CSS property "border" or "border-color".

```
.border, #border, table{ border:4px solid
#D7709F }
```

If only the border color should be changed use the property `border-color`.

```
.border{ border-color:#D7709F }
```

If you want to add a box shadow in that color use:



Here you see how a box with a 4 pixel #D7709F colored shadow looks like.

```
.boxshadow{ -moz-box-shadow:4px 4px 4px  
4px #D7709F; -webkit-box-shadow:4px 4px  
4px 4px #D7709F; box-shadow:4px 4px 4px  
4px #D7709F }
```

Background

The CSS property to change the background color of an element to Decimal 14119071 is called "background". The background property can be set on classes, ids or directly on the HTML element.

```
.background, #background, body{  
background:#D7709F }
```

If only the background color should be changed can be used:

```
.background{ background-color:#D7709F }
```

This example shows the color as background, it is applied via the CSS property "background".

To optimize and compress your CSS code, you can use our [online CSS compressor and optimizer](#) based on csstidy. If you want to create a linear or radial gradient as background or border, check our [CSS Gradient Generator](#).

Hey! You found this booklet interesting? Support Converting Colors with the new Membership Option!

The pro membership hides all ads, plus gives you double the colors in the color bucket, and more awesome pro features!

[Learn more, Memberships starting at \\$2.50/m!](#)

**Follow me
on Twitter!**

@ConvertingColor