

# Converting Colors

Decimal(14120085)

Have a look what the booklet for  
Decimal(14120085) contains.

<b>Decimal(14120085)</b> .....	3
<i><b>Conversions</b></i> .....	4
<i><b>Details</b></i> .....	6
<i><b>Harmonies</b></i> .....	11
<i><b>Previews</b></i> .....	23
<i><b>Color Blindness Simulation</b></i> .....	26
<i><b>CSS Examples</b></i> .....	29

# **Color**

**Decimal(14120085)**

# Conversions

## Conversions Part 1

Format	Color
Hex	D77495
RGB	215, 116, 149
RGB Percent	84%, 45%, 58%
CMY	0.1569, 0.5451, 0.4157
CMYK	0.00, 0.46, 0.31, 0.16
HSL	340°, 55%, 65%
HSV	340°, 46%, 84%
XYZ	39.6945, 29.1078, 31.9600
YIQ	149.3630, 48.4110, 31.2510

# Conversions

## Conversions Part 2

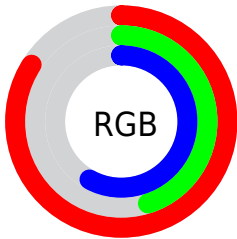
<b>Format</b>	<b>Color</b>
R <sub>Y</sub> B	215, 116, 149
Decimal	14120085
CIE Lab	60.88, 42.37, -0.37
CIE LCh	61, 42.375, 359.499
Yxy	29.1078, 0.3939, 0.2889
Android (android.graphics.Color)	4292310165 (0xFFD77495)
YUV	149.3630, -0.1790, 57.5636
Hunter-Lab	53.9516, 36.9148, 2.6438

# Details

The Decimal color **14120085** is a light color, and the websafe version is hex **CC6699**. A complement of this color would be **7657398**, and the grayscale version is **9803157**.

A 20% lighter version of the original color is **16755403**, and **10371170** is the 20% darker color. If you saturate the color by 10%, you get **14114439**, and if you desaturate by 10%, it is **14125731**.

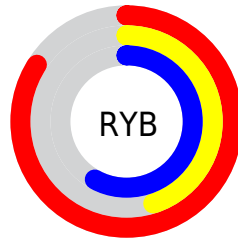
# Distribution



Red (84%)

Green (45%)

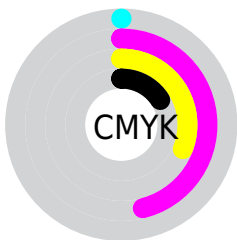
Blue (58%)



Red (84%)

Yellow (45%)

Blue (58%)

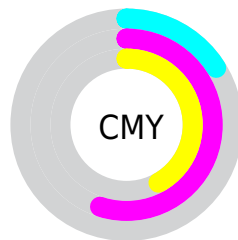


Cyan (0%)

Magenta (46%)

Yellow (31%)

Black (16%)



Cyan (16%)

Magenta (55%)

Yellow (42%)

# Brightness & Saturation Gradients

These gradients show how the Decimal color 14120085 changes by changing the brightness by 10 percent. The first figure shows a shift by +10% for each color and the second figure -10%.

Similar to the brightness gradients but the following saturation gradients show a change of the Decimal color 14120085 by changing the saturation by 10% instead.



 14120085

 14120085

16777215

 12212859

 16755403

 10371170

 16762599

 8529483

 16770047

 6686004

 4980767

 3473414

 524288

 0

 14120085

 14120085

 14114439

 14125731

 14109048

 14131122

 14103658

 14136768

 14098012

 14142158

 14092365

 14147805

 14090312

 14153195

 14155769

 14155775

# Harmonies

## Analogous

The Analogous color harmony consists of three colors that are next to each other on the color wheel.



12680377



14120085



14186352

# Triad

The Triadic color harmony groups three colors that are evenly spaced from another and form a triangle on the color wheel.



14120085



8690768



41427

# Complementary

The Complementary color scheme is a pair of colors which are on the opposite of each other on the color wheel.



14120085



7657398

# Split Complementary

Split-complementary colors differ from the complementary color scheme. The scheme consists of three colors, the original color and two neighbors of the complement color.



42423



14120085



5612395

# Square

The Square scheme is like the rectangle color scheme, but the four colors are evenly spaced on the color wheel.



14120085



11178310



42641



5347293

# Rectangle

The Rectangle color scheme consists of four colors that form a rectangle on the color wheel.



14120085



13598555



42641



41931



# Sweetspot

The Sweet Spot groups the original color and five complimentary colors.



14120085



16767975



11957463



8415857



0



8421504



# Same Dimension

The Same Dimension uses a secret algorithm to generate beautiful new colors.



14120085



16741282



14124404



7037028



11206713



2818062



# Inverse Universe

The Inverse Universe completely reimagines the original color for something new.



14120085



16741282



7653079



7037028



11206713



2818062



# Previews

## White Background



This preview shows how the Decimal color 14120085 looks on a white background.

## Color Contrast Check

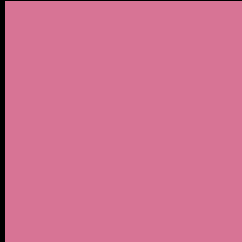
Large Text (above 18pt) WCAG AA ✓ Pass

Any Text WCAG AA ✗ Fail

Large Text (above 18pt) WCAG AAA ✗ Fail

Any Text WCAG AAA ✗ Fail

# Black Background



This preview shows how the Decimal color 14120085 looks on a black background.

## Color Contrast Check

Large Text (above 18pt) WCAG AA ✓ Pass

Any Text WCAG AA ✓ Pass

Large Text (above 18pt) WCAG AAA ✓ Pass

Any Text WCAG AAA × Fail

If you want to check with other color combinations, try the [Color Contrast Checker](#).



## Decimal 14120085 Background



This preview shows how black text looks on a background with the Decimal color 14120085.




This preview shows how white text looks on a background with the Decimal color 14120085.

# Color Blindness Simulation

Color vision deficiency is a very complex topic, and I could not describe the different causes any better than Wikipedia does, so if you want to learn more, you should check out their [article about color blindness](#).

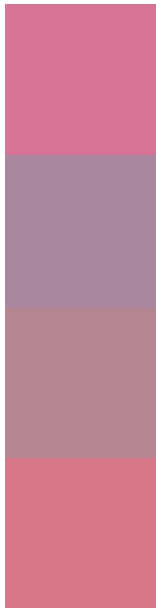
## Dichromacy





**Tritanopia**  
13990016

# Trichromacy



**Original Color**  
14120085

**Protanomaly**  
11175840

**Deuteranomaly**  
11961746

**Tritanomaly**  
14055304

# Monochromacy



**Original Color**  
14120085

**Achromatopsia**  
9803157

**Achromatomaly**  
11372949

# CSS Examples

## Text

The CSS property to change the color of the text to Decimal 14120085 is called "color". The color property can be set on classes, ids or directly on the HTML element.

This example shows how text in the color #D77495 looks like.

```
.text, #text, p{  
    color:#D77495  
}
```

If you want to add a text shadow in that color use the text-shadow property, you can generate a text shadow directly with our [CSS Text Shadow Generator](#).

Here you see how black text with a 4 pixel #D77495 colored shadow looks like.

```
.shadow{ text-shadow: 4px 4px 2px #D77495
}
```

## Border

The CSS property to change the border of an element to Decimal 14120085 is called "border". The border property can be set on classes, ids or directly on the HTML element.

This example shows the color as border, it can be applied via the CSS property "border" or "border-color".

```
.border, #border, table{ border:4px solid
#D77495 }
```

If only the border color should be changed use the property `border-color`.

```
.border{ border-color:#D77495 }
```

If you want to add a box shadow in that color use:

Here you see how a box with a 4 pixel #D77495 colored shadow looks like.

```
.boxshadow{ -moz-box-shadow:4px 4px 4px  
4px #D77495; -webkit-box-shadow:4px 4px  
4px 4px #D77495; box-shadow:4px 4px 4px  
4px #D77495 }
```

# Background

The CSS property to change the background color of an element to Decimal 14120085 is called "background". The background property can be set on classes, ids or directly on the HTML element.

```
.background, #background, body{  
background:#D77495 }
```

If only the background color should be changed can be used:

```
.background{ background-color:#D77495 }
```

This example shows the color as background, it is applied via the CSS property "background".

To optimize and compress your CSS code, you can use our [online CSS compressor and optimizer](#) based on csstidy. If you want to create a linear or radial gradient as background or border, check our [CSS Gradient Generator](#).



Hey! You found this booklet interesting? Support Converting Colors with the new Membership Option!

The pro membership hides all ads, plus gives you double the colors in the color bucket, and more awesome pro features!

**[Learn more, Memberships starting at \\$2.50/m!](#)**

**Follow me  
on Twitter!**

@ConvertingColor