

Converting Colors

Decimal(14128031)

Have a look what the booklet for
Decimal(14128031) contains.

Decimal(14128031)	3
<i>Conversions</i>	4
<i>Details</i>	6
<i>Harmonies</i>	11
<i>Previews</i>	23
<i>Color Blindness Simulation</i>	26
<i>CSS Examples</i>	29

Color

Decimal(14128031)

Conversions

Conversions Part 1

Format	Color
Hex	D7939F
RGB	215, 147, 159
RGB Percent	84%, 58%, 62%
CMY	0.1569, 0.4235, 0.3765
CMYK	0.00, 0.32, 0.26, 0.16
HSL	349°, 46%, 71%
HSV	349°, 32%, 84%
XYZ	44.7161, 37.8177, 37.7436
YIQ	168.7000, 36.6760, 18.1480

Conversions

Conversions Part 2

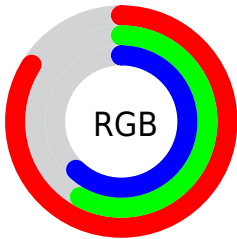
Format	Color
R _Y B	215, 147, 159
Decimal	14128031
CIE Lab	67.89, 27.30, 4.14
CIE LCh	68, 27.610, 8.618
Yxy	37.8177, 0.3718, 0.3144
Android (android.graphics.Color)	4292318111 (0xFFD7939F)
YUV	168.7000, -4.7821, 40.6051
Hunter-Lab	61.4961, 22.1757, 6.6576

Details

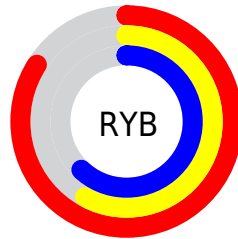
The Decimal color **14128031** is a light color, and the websafe version is hex **CC9999**. A complement of this color would be **9689035**, and the grayscale version is **11119017**.

A 20% lighter version of the original color is **16763606**, and **10444908** is the 20% darker color. If you saturate the color by 10%, you get **14122637**, and if you desaturate by 10%, it is **14133681**.

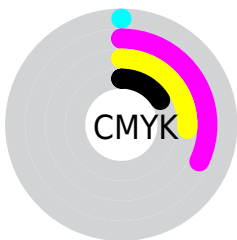
Distribution



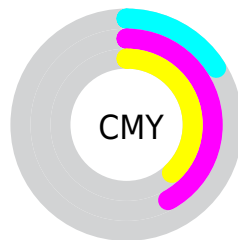
- Red (84%)
- Green (58%)
- Blue (62%)



- Red (84%)
- Yellow (58%)
- Blue (62%)



- Cyan (0%)
- Magenta (32%)
- Yellow (26%)
- Black (16%)



- Cyan (16%)
- Magenta (42%)
- Yellow (38%)

Brightness & Saturation Gradients

These gradients show how the Decimal color 14128031 changes by changing the brightness by 10 percent. The first figure shows a shift by +10% for each color and the second figure -10%.

Similar to the brightness gradients but the following saturation gradients show a change of the Decimal color 14128031 by changing the saturation by 10% instead.

 14128031

 14128031

16777215

 12286341

 16763606

 10444908

 16770802

 8669012

 6893372

 5249063

 3604754

 2097153

 0

 14128031

 14128031

 14122637

 14133681

 14116988

 14139074

 14111338

 14144468

 14105944

 14150118

 14100550

 14155768

 14094901

 14155775

 14090278

Harmonies

Analogous

The Analogous color harmony consists of three colors that are next to each other on the color wheel.



13342136



14128031



13997703

Triad

The Triadic color harmony groups three colors that are evenly spaced from another and form a triangle on the color wheel.



14128031



9743742



7187923

Complementary

The Complementary color scheme is a pair of colors which are on the opposite of each other on the color wheel.



14128031



9689035

Split Complementary

Split-complementary colors differ from the complementary color scheme. The scheme consists of three colors, the original color and two neighbors of the complement color.



5878468



14128031



7910034

Square

The Square scheme is like the rectangle color scheme, but the four colors are evenly spaced on the color wheel.



14128031



11576948



6271916



9479638

Rectangle

The Rectangle color scheme consists of four colors that form a rectangle on the color wheel.



14128031



13474684



6271916



6598607

Sweetspot

The Sweet Spot groups the original color and five complimentary colors.



14128031



16771308



13341655



8417652



0



8421504

Same Dimension

The Same Dimension uses a secret algorithm to generate beautiful new colors.



14128031



16752303



14133651



7037026



11206686



2818056

Inverse Universe

The Inverse Universe completely reimagines the original color for something new.



14128031



16752303



9683415



7037026



11206686



2818056

Previews

White Background



This preview shows how the Decimal color 14128031 looks on a white background.

Color Contrast Check

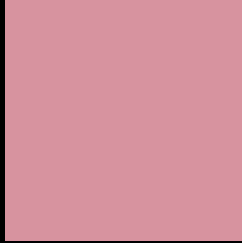
Large Text (above 18pt) WCAG AA × Fail

Any Text WCAG AA × Fail

Large Text (above 18pt) WCAG AAA × Fail

Any Text WCAG AAA × Fail

Black Background



This preview shows how the Decimal color 14128031 looks on a black background.

Color Contrast Check

Large Text (above 18pt) WCAG AA ✓ Pass

Any Text WCAG AA ✓ Pass

Large Text (above 18pt) WCAG AAA ✓ Pass

Any Text WCAG AAA ✓ Pass

If you want to check with other color combinations, try the [Color Contrast Checker](#).

Decimal 14128031 Background



This preview shows how black text looks on a background with the Decimal color 14128031.



This preview shows how white text looks on a background with the Decimal color 14128031.

Color Blindness Simulation

Color vision deficiency is a very complex topic, and I could not describe the different causes any better than Wikipedia does, so if you want to learn more, you should check out their [article about color blindness](#).


Dichromacy



Original Color
14128031

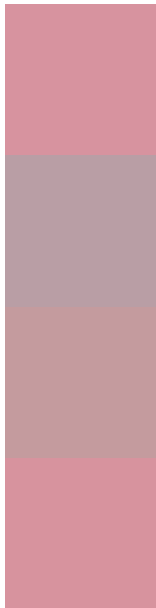
Protanopia
11052457

Deuteranopia
12165277



Tritanopia
14128030

Trichromacy



Original Color
14128031

Protanomaly
12164773

Deuteranomaly
12884894

Tritanomaly
14128030

Monochromacy



Original Color
14128031

Achromatopsia
11119017

Achromatomaly
12231077

CSS Examples

Text

The CSS property to change the color of the text to Decimal 14128031 is called "color". The color property can be set on classes, ids or directly on the HTML element.

This example shows how text in the color #D7939F looks like.

```
.text, #text, p{  
    color:#D7939F  
}
```

If you want to add a text shadow in that color use the text-shadow property, you can generate a text shadow directly with our [CSS Text Shadow Generator](#).

Here you see how black text with a 4 pixel #D7939F colored shadow looks like.

```
.shadow{ text-shadow: 4px 4px 2px #D7939F
}
```

Border

The CSS property to change the border of an element to Decimal 14128031 is called "border". The border property can be set on classes, ids or directly on the HTML element.

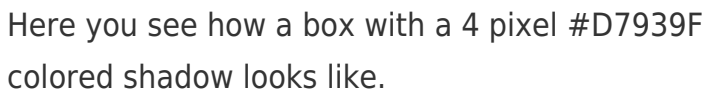
This example shows the color as border, it can be applied via the CSS property "border" or "border-color".

```
.border, #border, table{ border:4px solid
#D7939F }
```

If only the border color should be changed use the property `border-color`.

```
.border{ border-color:#D7939F }
```

If you want to add a box shadow in that color use:



Here you see how a box with a 4 pixel #D7939F colored shadow looks like.

```
.boxshadow{ -moz-box-shadow:4px 4px 4px  
4px #D7939F; -webkit-box-shadow:4px 4px  
4px 4px #D7939F; box-shadow:4px 4px 4px  
4px #D7939F }
```

Background

The CSS property to change the background color of an element to Decimal 14128031 is called "background". The background property can be set on classes, ids or directly on the HTML element.

```
.background, #background, body{  
background:#D7939F }
```

If only the background color should be changed can be used:

```
.background{ background-color:#D7939F }
```

This example shows the color as background, it is applied via the CSS property "background".

To optimize and compress your CSS code, you can use our [online CSS compressor and optimizer](#) based on csstidy. If you want to create a linear or radial gradient as background or border, check our [CSS Gradient Generator](#).

Hey! You found this booklet interesting? Support Converting Colors with the new Membership Option!

The pro membership hides all ads, plus gives you double the colors in the color bucket, and more awesome pro features!

[Learn more, Memberships starting at \\$2.50/m!](#)

**Follow me
on Twitter!**

@ConvertingColor