

Converting Colors

Decimal(14128515)

Have a look what the booklet for
Decimal(14128515) contains.

Decimal(14128515)	3
<i>Conversions</i>	4
<i>Details</i>	6
<i>Harmonies</i>	11
<i>Previews</i>	23
<i>Color Blindness Simulation</i>	26
<i>CSS Examples</i>	29

Color

Decimal(14128515)

Conversions

Conversions Part 1

Format	Color
Hex	D79583
RGB	215, 149, 131
RGB Percent	84%, 58%, 51%
CMY	0.1569, 0.4157, 0.4863
CMYK	0.00, 0.31, 0.39, 0.16
HSL	13°, 51%, 68%
HSV	13°, 39%, 84%
XYZ	42.8685, 37.5807, 26.4671
YIQ	166.6820, 45.1140, 8.3940

Conversions

Conversions Part 2

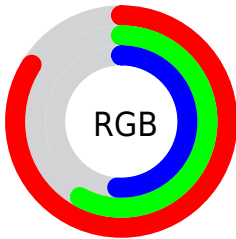
Format	Color
RYB	215, 154, 131
Decimal	14128515
CIELab	67.71, 22.62, 19.51
CIELCh	68, 29.875, 40.772
Yxy	37.5807, 0.4010, 0.3515
Android (android.graphics.Color)	4292318595 (0xFFD79583)
YUV	166.6820, -17.5912, 42.3749
Hunter-Lab	61.3031, 17.5426, 17.3142

Details

The Decimal color **14128515** is a light color, and the websafe version is hex **CC9999**. A complement of this color would be **8635863**, and the grayscale version is **10987431**.

A 20% lighter version of the original color is **16763832**, and **10379858** is the 20% darker color. If you saturate the color by 10%, you get **14124142**, and if you desaturate by 10%, it is **14132889**.

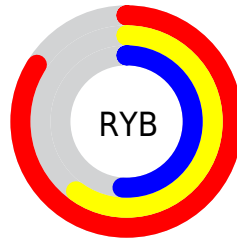
Distribution



Red (84%)

Green (58%)

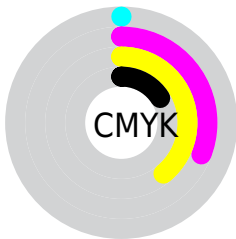
Blue (51%)



Red (84%)

Yellow (60%)

Blue (51%)

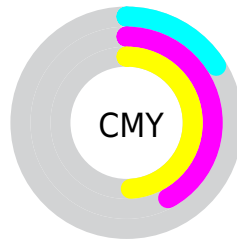


Cyan (0%)

Magenta (31%)

Yellow (39%)

Black (16%)



Cyan (16%)

Magenta (42%)

Yellow (49%)

Brightness & Saturation Gradients

These gradients show how the Decimal color 14128515 changes by changing the brightness by 10 percent. The first figure shows a shift by +10% for each color and the second figure -10%.

Similar to the brightness gradients but the following saturation gradients show a change of the Decimal color 14128515 by changing the saturation by 10% instead.

 14128515

 14128515

16777215

 12221290

 16763832

 10379858

 16771284

 8603962

 16777200

 6828581

 5053456

 3409408

 1703937

 0

 14128515

 14128515

 14124142

 14132889

 14119768

 14137262

 14115394

 14141635

 14111021

 14146009

 14106903

 14150126

 14102530

 14154495

 14102016

 14155775

Harmonies

Analogous

The Analogous color harmony consists of three colors that are next to each other on the color wheel.



14324124



14128515



13081971

Triad

The Triadic color harmony groups three colors that are evenly spaced from another and form a triangle on the color wheel.



14128515



7451282



9479386

Complementary

The Complementary color scheme is a pair of colors which are on the opposite of each other on the color wheel.



14128515



8635863

Split Complementary

Split-complementary colors differ from the complementary color scheme. The scheme consists of three colors, the original color and two neighbors of the complement color.



6860247



14128515



5616814

Square

The Square scheme is like the rectangle color scheme, but the four colors are evenly spaced on the color wheel.



14128515



9481851



5157575



11901902

Rectangle

The Rectangle color scheme consists of four colors that form a rectangle on the color wheel.



14128515



12034927



5157575



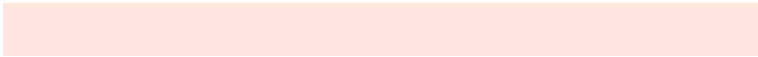
8562650

Sweetspot

The Sweet Spot groups the original color and five complimentary colors.



14128515



16771040



14123974



8417646



0



8421504

Same Dimension

The Same Dimension uses a secret algorithm to generate beautiful new colors.



14128515



16753031



14139011



7037792



11216128



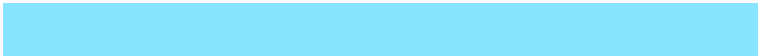
2820352

Inverse Universe

The Inverse Universe completely reimagines the original color for something new.



8635863



8906239



8625367



6318443



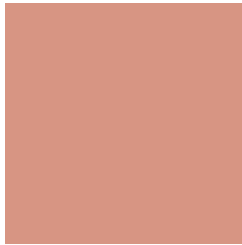
34475



8747

Previews

White Background



This preview shows how the Decimal color 14128515 looks on a white background.

Color Contrast Check

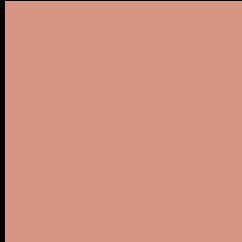
Large Text (above 18pt) WCAG AA × Fail

Any Text WCAG AA × Fail

Large Text (above 18pt) WCAG AAA × Fail

Any Text WCAG AAA × Fail

Black Background



This preview shows how the Decimal color 14128515 looks on a black background.

Color Contrast Check

Large Text (above 18pt) WCAG AA ✓ Pass

Any Text WCAG AA ✓ Pass

Large Text (above 18pt) WCAG AAA ✓ Pass

Any Text WCAG AAA ✓ Pass

If you want to check with other color combinations, try the [Color Contrast Checker](#).

Decimal 14128515 Background



This preview shows how black text looks on a background with the Decimal color 14128515.




This preview shows how white text looks on a background with the Decimal color 14128515.

Color Blindness Simulation

Color vision deficiency is a very complex topic, and I could not describe the different causes any better than Wikipedia does, so if you want to learn more, you should check out their [article about color blindness](#).

Dichromacy





Tritanopia
14258588

Trichromacy



Original Color
14128515

Protanomaly
12427144

Deuteranomaly
13212546

Tritanomaly
14193299

Monochromacy



Original Color
14128515

Achromatopsia
10987431

Achromatomaly
12099738

CSS Examples

Text

The CSS property to change the color of the text to Decimal 14128515 is called "color". The color property can be set on classes, ids or directly on the HTML element.

This example shows how text in the color #D79583 looks like.

```
.text, #text, p{  
  color:#D79583  
}
```

If you want to add a text shadow in that color use the text-shadow property, you can generate a text shadow directly with our [CSS Text Shadow Generator](#).

Here you see how black text with a 4 pixel #D79583 colored shadow looks like.

```
.shadow{ text-shadow: 4px 4px 2px #D79583
}
```

Border

The CSS property to change the border of an element to Decimal 14128515 is called "border". The border property can be set on classes, ids or directly on the HTML element.

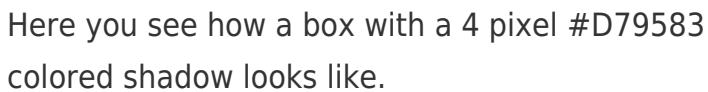
This example shows the color as border, it can be applied via the CSS property "border" or "border-color".

```
.border, #border, table{ border:4px solid
#D79583 }
```

If only the border color should be changed use the property `border-color`.

```
.border{ border-color:#D79583 }
```

If you want to add a box shadow in that color use:

A rectangular box with a 4px orange shadow. The box is white with a thin orange border. The shadow is a solid orange color, 4 pixels wide and 4 pixels high, positioned to the right and bottom of the box.

Here you see how a box with a 4 pixel #D79583 colored shadow looks like.

```
.boxshadow{ -moz-box-shadow:4px 4px 4px  
4px #D79583; -webkit-box-shadow:4px 4px  
4px 4px #D79583; box-shadow:4px 4px 4px  
4px #D79583 }
```

Background

The CSS property to change the background color of an element to Decimal 14128515 is called "background". The background property can be set on classes, ids or directly on the HTML element.

```
.background, #background, body{  
background:#D79583 }
```

If only the background color should be changed can be used:

```
.background{ background-color:#D79583 }
```

This example shows the color as background, it is applied via the CSS property "background".

To optimize and compress your CSS code, you can use our [online CSS compressor and optimizer](#) based on csstidy. If you want to create a linear or radial gradient as background or border, check our [CSS Gradient Generator](#).

Hey! You found this booklet interesting? Support Converting Colors with the new Membership Option!

The pro membership hides all ads, plus gives you double the colors in the color bucket, and more awesome pro features!

[Learn more, Memberships starting at \\$2.50/m!](#)

**Follow me
on Twitter!**

@ConvertingColor