

Converting Colors

Decimal(14132380)

Have a look what the booklet for
Decimal(14132380) contains.

Decimal(14132380)	3
<i>Conversions</i>	4
<i>Details</i>	6
<i>Harmonies</i>	11
<i>Previews</i>	23
<i>Color Blindness Simulation</i>	26
<i>CSS Examples</i>	29

Color

Decimal(14132380)

Conversions

Conversions Part 1

Format	Color
Hex	D7A49C
RGB	215, 164, 156
RGB Percent	84%, 64%, 61%
CMY	0.1569, 0.3569, 0.3882
CMYK	0.00, 0.24, 0.27, 0.16
HSL	8°, 42%, 73%
HSV	8°, 27%, 84%
XYZ	47.3005, 43.3983, 37.3362
YIQ	178.3370, 32.9640, 8.3240

Conversions

Conversions Part 2

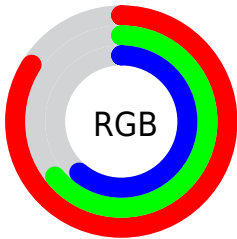
Format	Color
R_{YB}	215, 165, 156
Decimal	14132380
CIE _{Lab}	71.82, 17.67, 11.43
CIE _{LCh}	72, 21.051, 32.901
Yxy	43.3983, 0.3694, 0.3390
Android (android.graphics.Color)	4292322460 (0xFFD7A49C)
YUV	178.3370, -11.0121, 32.1535
Hunter-Lab	65.8774, 12.8792, 12.5114

Details

The Decimal color **14132380** is a light color, and the websafe version is hex **CC9999**. A complement of this color would be **10276823**, and the grayscale version is **11711154**.

A 20% lighter version of the original color is **16767954**, and **10449001** is the 20% darker color. If you saturate the color by 10%, you get **14127495**, and if you desaturate by 10%, it is **14137266**.

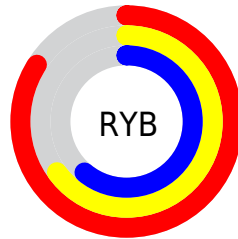
Distribution



Red (84%)

Green (64%)

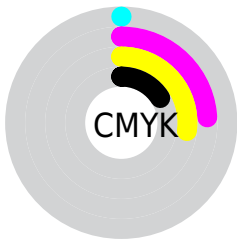
Blue (61%)



Red (84%)

Yellow (65%)

Blue (61%)

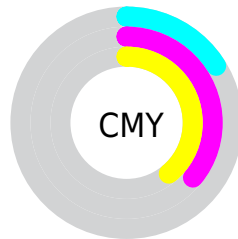


Cyan (0%)

Magenta (24%)

Yellow (27%)

Black (16%)



Cyan (16%)

Magenta (36%)

Yellow (39%)

Brightness & Saturation Gradients

These gradients show how the Decimal color 14132380 changes by changing the brightness by 10 percent. The first figure shows a shift by +10% for each color and the second figure -10%.

Similar to the brightness gradients but the following saturation gradients show a change of the Decimal color 14132380 by changing the saturation by 10% instead.

 14132380

 14132380

16777215

 12290690

 16767954

 10449001

 16775407

 8673105

 6963258

 5318948

 3675151

 2293760

 0

 14132380

 14132380

 14127495

 14137266

 14122865

 14141895

 14117980

 14146781

 14113350

 14151410

 14108465

 14155775

 14103579

 14098949

 14097664

Harmonies

Analogous

The Analogous color harmony consists of three colors that are next to each other on the color wheel.



14066351



14132380



13543822

Triad

The Triadic color harmony groups three colors that are evenly spaced from another and form a triangle on the color wheel.



14132380



9615774



10269142

Complementary

The Complementary color scheme is a pair of colors which are on the opposite of each other on the color wheel.



14132380



10276823

Split Complementary

Split-complementary colors differ from the complementary color scheme. The scheme consists of three colors, the original color and two neighbors of the complement color.



8763346



14132380



8502193

Square

The Square scheme is like the rectangle color scheme, but the four colors are evenly spaced on the color wheel.



14132380



11056527



8108740



11971280

Rectangle

The Rectangle color scheme consists of four colors that form a rectangle on the color wheel.



14132380



12823946



8108740



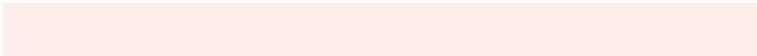
9745366

Sweetspot

The Sweet Spot groups the original color and five complimentary colors.



14132380



16772587



14130383



8418419



0



8421504

Same Dimension

The Same Dimension uses a secret algorithm to generate beautiful new colors.



14132380



16758443



14139804



7037536



11212544



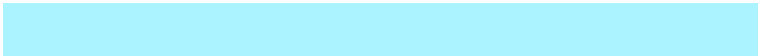
2819584

Inverse Universe

The Inverse Universe completely reimagines the original color for something new.



10276823



11269375



10269399



6318699



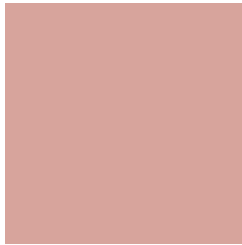
38059



9515

Previews

White Background



This preview shows how the Decimal color 14132380 looks on a white background.

Color Contrast Check

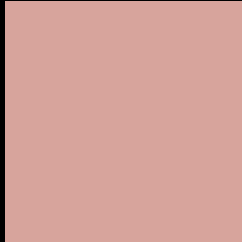
Large Text (above 18pt) WCAG AA × Fail

Any Text WCAG AA × Fail

Large Text (above 18pt) WCAG AAA × Fail

Any Text WCAG AAA × Fail

Black Background



This preview shows how the Decimal color 14132380 looks on a black background.

Color Contrast Check

Large Text (above 18pt) WCAG AA ✓ Pass

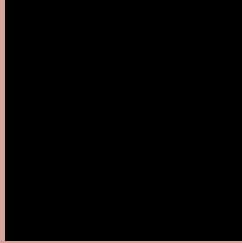
Any Text WCAG AA ✓ Pass

Large Text (above 18pt) WCAG AAA ✓ Pass

Any Text WCAG AAA ✓ Pass

If you want to check with other color combinations, try the [Color Contrast Checker](#).

Decimal 14132380 Background



This preview shows how black text looks on a background with the Decimal color 14132380.



This preview shows how white text looks on a background with the Decimal color 14132380.

Color Blindness Simulation

Color vision deficiency is a very complex topic, and I could not describe the different causes any better than Wikipedia does, so if you want to learn more, you should check out their [article about color blindness](#).

Dichromacy





Tritanopia
14262702

Trichromacy



Original Color
14132380

Protanomaly
12823712

Deuteranomaly
13543579

Tritanomaly
14197415

Monochromacy



Original Color
14132380

Achromatopsia
11711154

Achromatomaly
12561834

CSS Examples

Text

The CSS property to change the color of the text to Decimal 14132380 is called "color". The color property can be set on classes, ids or directly on the HTML element.

This example shows how text in the color #D7A49C looks like.

```
.text, #text, p{  
  color:#D7A49C  
}
```

If you want to add a text shadow in that color use the text-shadow property, you can generate a text shadow directly with our [CSS Text Shadow Generator](#).

Here you see how black text with a 4 pixel #D7A49C colored shadow looks like.

```
.shadow{ text-shadow: 4px 4px 2px #D7A49C
}
```

Border

The CSS property to change the border of an element to Decimal 14132380 is called "border". The border property can be set on classes, ids or directly on the HTML element.

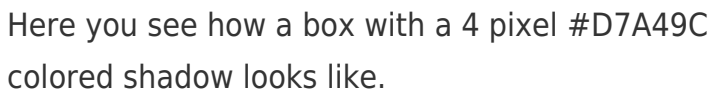
This example shows the color as border, it can be applied via the CSS property "border" or "border-color".

```
.border, #border, table{ border:4px solid
#D7A49C }
```

If only the border color should be changed use the property `border-color`.

```
.border{ border-color:#D7A49C }
```

If you want to add a box shadow in that color use:

A rectangular box with a 4-pixel orange shadow. The box is white with a thin orange border. The shadow is a solid orange color, 4 pixels wide and 4 pixels high, positioned to the right and bottom of the box.

Here you see how a box with a 4 pixel #D7A49C colored shadow looks like.

```
.boxshadow{ -moz-box-shadow:4px 4px 4px  
4px #D7A49C; -webkit-box-shadow:4px 4px  
4px 4px #D7A49C; box-shadow:4px 4px 4px  
4px #D7A49C }
```

Background

The CSS property to change the background color of an element to Decimal 14132380 is called "background". The background property can be set on classes, ids or directly on the HTML element.

```
.background, #background, body{  
background:#D7A49C }
```

If only the background color should be changed can be used:

```
.background{ background-color:#D7A49C }
```

This example shows the color as background, it is applied via the CSS property "background".

To optimize and compress your CSS code, you can use our [online CSS compressor and optimizer](#) based on csstidy. If you want to create a linear or radial gradient as background or border, check our [CSS Gradient Generator](#).

Hey! You found this booklet interesting? Support Converting Colors with the new Membership Option!

The pro membership hides all ads, plus gives you double the colors in the color bucket, and more awesome pro features!

[Learn more, Memberships starting at \\$2.50/m!](#)

**Follow me
on Twitter!**

@ConvertingColor