

# Converting Colors

Decimal(14133931)

Have a look what the booklet for  
Decimal(14133931) contains.

<b>Decimal(14133931)</b> .....	3
<i><b>Conversions</b></i> .....	4
<i><b>Details</b></i> .....	6
<i><b>Harmonies</b></i> .....	11
<i><b>Previews</b></i> .....	23
<i><b>Color Blindness Simulation</b></i> .....	26
<i><b>CSS Examples</b></i> .....	29

# **Color**

**Decimal(14133931)**

# Conversions

## Conversions Part 1

Format	Color
Hex	D7AAAB
RGB	215, 170, 171
RGB Percent	84%, 67%, 67%
CMY	0.1569, 0.3333, 0.3294
CMYK	0.00, 0.21, 0.20, 0.16
HSL	359°, 36%, 75%
HSV	359°, 21%, 84%
XYZ	49.7497, 46.1368, 44.8113
YIQ	183.5690, 26.4990, 9.8510

# Conversions

## Conversions Part 2

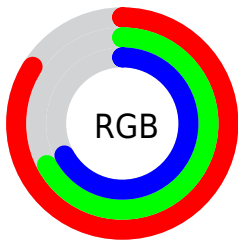
<b>Format</b>	<b>Color</b>
<b>R<sub>YB</sub></b>	215, 170, 171
Decimal	14133931
CIE <sub>Lab</sub>	73.63, 16.60, 5.78
CIE <sub>LCh</sub>	74, 17.574, 19.184
Yxy	46.1368, 0.3536, 0.3279
Android (android.graphics.Color)	4292324011 (0xFFD7AAAB)
YUV	183.5690, -6.1965, 27.5650
Hunter-Lab	67.9241, 11.8719, 8.4317

# Details

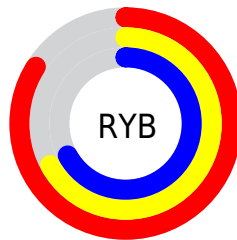
The Decimal color **14133931** is a light color, and the websafe version is hex **CC9999**. A complement of this color would be **11196374**, and the grayscale version is **12105912**.

A 20% lighter version of the original color is **16769506**, and **10516087** is the 20% darker color. If you saturate the color by 10%, you get **14128534**, and if you desaturate by 10%, it is **14139584**.

# Distribution



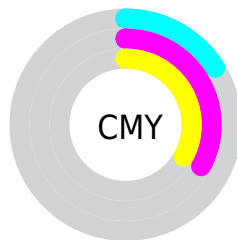
- Red (84%)
- Green (67%)
- Blue (67%)



- Red (84%)
- Yellow (67%)
- Blue (67%)



- Cyan (0%)
- Magenta (21%)
- Yellow (20%)
- Black (16%)



- Cyan (16%)
- Magenta (33%)
- Yellow (33%)

# Brightness & Saturation Gradients

These gradients show how the Decimal color 14133931 changes by changing the brightness by 10 percent. The first figure shows a shift by +10% for each color and the second figure -10%.

Similar to the brightness gradients but the following saturation gradients show a change of the Decimal color 14133931 by changing the saturation by 10% instead.



 14133931

 14133931

16777215

 12291985

 16769506


 10516087

16776959

 8740190

 7030087

 5385776

 3807515

 2490368

 0

 14133931

 14133931


 14128534

 14139584

 14122881

 14144981

 14117484

 14150634

 14111831

 14155775

 14106178

 14100781

 14095384

 14090245

# Harmonies

## Analogous

The Analogous color harmony consists of three colors that are next to each other on the color wheel.



13806267



14133931



13872541

# Triad

The Triadic color harmony groups three colors that are evenly spaced from another and form a triangle on the color wheel.



14133931



10795935



10270932

# Complementary

The Complementary color scheme is a pair of colors which are on the opposite of each other on the color wheel.



14133931



11196374

# Split Complementary

Split-complementary colors differ from the complementary color scheme. The scheme consists of three colors, the original color and two neighbors of the complement color.



9288909



14133931



9748142

# Square

The Square scheme is like the rectangle color scheme, but the four colors are evenly spaced on the color wheel.



14133931



12040086



9158335



11580371

# Rectangle

The Rectangle color scheme consists of four colors that form a rectangle on the color wheel.



14133931



13414551



9158335



9878227

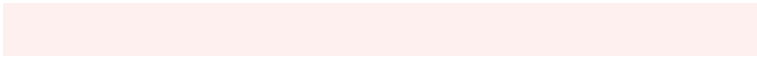


# Sweetspot

The Sweet Spot groups the original color and five complimentary colors.



14133931



16773360



14068439



8419191



0



8421504



# Same Dimension

The Same Dimension uses a secret algorithm to generate beautiful new colors.



14133931



16760769



14139306



7037025



11206660



2818049



# Inverse Universe

The Inverse Universe completely reimagines the original color for something new.



14133931



16760769



11190999



7037025



11206660

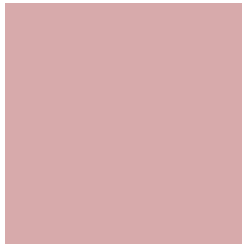


2818049



# Previews

## White Background



This preview shows how the Decimal color 14133931 looks on a white background.

## Color Contrast Check

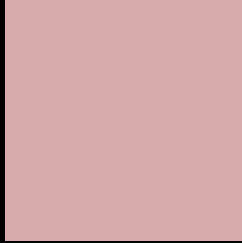
Large Text (above 18pt) WCAG AA × Fail

Any Text WCAG AA × Fail

Large Text (above 18pt) WCAG AAA × Fail

Any Text WCAG AAA × Fail

# Black Background



This preview shows how the Decimal color 14133931 looks on a black background.

## Color Contrast Check

Large Text (above 18pt) WCAG AA ✓ Pass

Any Text WCAG AA ✓ Pass

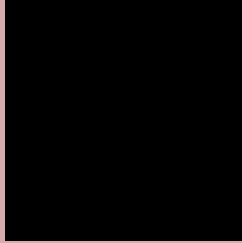
Large Text (above 18pt) WCAG AAA ✓ Pass

Any Text WCAG AAA ✓ Pass

If you want to check with other color combinations, try the [Color Contrast Checker](#).



## Decimal 14133931 Background



This preview shows how black text looks on a background with the Decimal color 14133931.




This preview shows how white text looks on a background with the Decimal color 14133931.

# Color Blindness Simulation

Color vision deficiency is a very complex topic, and I could not describe the different causes any better than Wikipedia does, so if you want to learn more, you should check out their [article about color blindness](#).

## Dichromacy





**Tritanopia**  
14198965

# Trichromacy



**Original Color**  
14133931

**Protanomaly**  
12890287

**Deuteranomaly**  
13610410

**Tritanomaly**  
14199217

# Monochromacy



**Original Color**  
14133931

**Achromatopsia**  
12105912

**Achromatomaly**  
12825523

# CSS Examples

## Text

The CSS property to change the color of the text to Decimal 14133931 is called "color". The color property can be set on classes, ids or directly on the HTML element.

This example shows how text in the color #D7AAAB looks like.

```
.text, #text, p{  
    color:#D7AAAB  
}
```

If you want to add a text shadow in that color use the text-shadow property, you can generate a text shadow directly with our [CSS Text Shadow Generator](#).

Here you see how black text with a 4 pixel #D7AAAB colored shadow looks like.

```
.shadow{ text-shadow: 4px 4px 2px #D7AAAB
}
```

## Border

The CSS property to change the border of an element to Decimal 14133931 is called "border". The border property can be set on classes, ids or directly on the HTML element.

This example shows the color as border, it can be applied via the CSS property "border" or "border-color".

```
.border, #border, table{ border:4px solid
#D7AAAB }
```

If only the border color should be changed use the property `border-color`.

```
.border{ border-color:#D7AAAB }
```

If you want to add a box shadow in that color use:

Here you see how a box with a 4 pixel #D7AAAB colored shadow looks like.

```
.boxshadow{ -moz-box-shadow:4px 4px 4px  
4px #D7AAAB; -webkit-box-shadow:4px 4px  
4px 4px #D7AAAB; box-shadow:4px 4px 4px  
4px #D7AAAB }
```

# Background

The CSS property to change the background color of an element to Decimal 14133931 is called "background". The background property can be set on classes, ids or directly on the HTML element.

```
.background, #background, body{  
background:#D7AAAB }
```

If only the background color should be changed can be used:

```
.background{ background-color:#D7AAAB }
```

This example shows the color as background, it is applied via the CSS property "background".

To optimize and compress your CSS code, you can use our [online CSS compressor and optimizer](#) based on csstidy. If you want to create a linear or radial gradient as background or border, check our [CSS Gradient Generator](#).



Hey! You found this booklet interesting? Support Converting Colors with the new Membership Option!

The pro membership hides all ads, plus gives you double the colors in the color bucket, and more awesome pro features!

**[Learn more, Memberships starting at \\$2.50/m!](#)**

**Follow me  
on Twitter!**

@ConvertingColor