

Converting Colors

Decimal(14134704)

Have a look what the booklet for
Decimal(14134704) contains.

Decimal(14134704)	3
<i>Conversions</i>	4
<i>Details</i>	6
<i>Harmonies</i>	11
<i>Previews</i>	23
<i>Color Blindness Simulation</i>	26
<i>CSS Examples</i>	29

Color

Decimal(14134704)

Conversions

Conversions Part 1

Format	Color
Hex	D7ADB0
RGB	215, 173, 176
RGB Percent	84%, 68%, 69%
CMY	0.1569, 0.3216, 0.3098
CMYK	0.00, 0.20, 0.18, 0.16
HSL	356°, 34%, 76%
HSV	356°, 20%, 84%
XYZ	50.8044, 47.4688, 47.5590
YIQ	185.9000, 24.0690, 9.8370

Conversions

Conversions Part 2

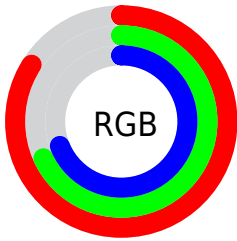
Format	Color
R _Y B	215, 173, 176
Decimal	14134704
CIE Lab	74.49, 15.74, 4.27
CIE LCh	74, 16.311, 15.167
Yxy	47.4688, 0.3484, 0.3255
Android (android.graphics.Color)	4292324784 (0xFFD7ADB0)
YUV	185.9000, -4.8807, 25.5207
Hunter-Lab	68.8976, 11.0532, 7.3013

Details

The Decimal color **14134704** is a light color, and the websafe version is hex **CC9999**. A complement of this color would be **11392980**, and the grayscale version is **12237498**.

A 20% lighter version of the original color is **16770536**, and **10516860** is the 20% darker color. If you saturate the color by 10%, you get **14129308**, and if you desaturate by 10%, it is **14140356**.

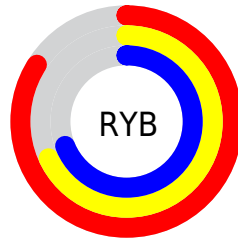
Distribution



Red (84%)

Green (68%)

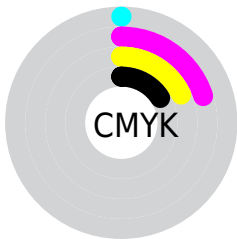
Blue (69%)



Red (84%)

Yellow (68%)

Blue (69%)

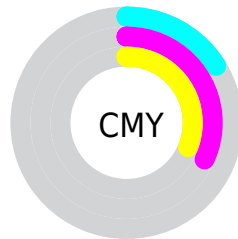


Cyan (0%)

Magenta (20%)

Yellow (18%)

Black (16%)



Cyan (16%)

Magenta (32%)

Yellow (31%)

Brightness & Saturation Gradients

These gradients show how the Decimal color 14134704 changes by changing the brightness by 10 percent. The first figure shows a shift by +10% for each color and the second figure -10%.

Similar to the brightness gradients but the following saturation gradients show a change of the Decimal color 14134704 by changing the saturation by 10% instead.

 14134704

 14134704

16777215

 12292757


 16770536

 10516860

 8740963

 7030859

 5386548

 3808031

 2425863

 0

 14134704

 14134704


 14129308

 14140356

 14123656

 14145752

 14118260

 14151404

 14112608

 14155775

 14107212

 14101560

 14096164

 14090512

 14090255

Harmonies

Analogous

The Analogous color harmony consists of three colors that are next to each other on the color wheel.



13741759



14134704



13938595

Triad

The Triadic color harmony groups three colors that are evenly spaced from another and form a triangle on the color wheel.



14134704



11189666



10402772

Complementary

The Complementary color scheme is a pair of colors which are on the opposite of each other on the color wheel.



14134704



11392980

Split Complementary

Split-complementary colors differ from the complementary color scheme. The scheme consists of three colors, the original color and two neighbors of the complement color.



9617100



14134704



10141615

Square

The Square scheme is like the rectangle color scheme, but the four colors are evenly spaced on the color wheel.



14134704



12302746



9552062



11646676

Rectangle

The Rectangle color scheme consists of four colors that form a rectangle on the color wheel.



14134704



13546140



9552062



10075346

Sweetspot

The Sweet Spot groups the original color and five complimentary colors.



14134704



16773361



13872599



8419191



0



8421504

Same Dimension

The Same Dimension uses a secret algorithm to generate beautiful new colors.



14134704



16762057



14139309



7037025



11206668



2818051

Inverse Universe

The Inverse Universe completely reimagines the original color for something new.



14134704



16762057



11388631



7037025



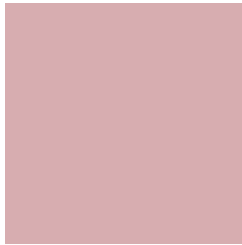
11206668



2818051

Previews

White Background



This preview shows how the Decimal color 14134704 looks on a white background.

Color Contrast Check

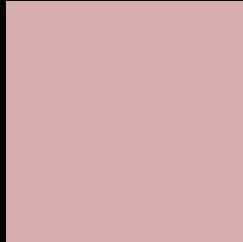
Large Text (above 18pt) WCAG AA × Fail

Any Text WCAG AA × Fail

Large Text (above 18pt) WCAG AAA × Fail

Any Text WCAG AAA × Fail

Black Background



This preview shows how the Decimal color 14134704 looks on a black background.

Color Contrast Check

Large Text (above 18pt) WCAG AA ✓ Pass

Any Text WCAG AA ✓ Pass

Large Text (above 18pt) WCAG AAA ✓ Pass

Any Text WCAG AAA ✓ Pass

If you want to check with other color combinations, try the [Color Contrast Checker](#).

Decimal 14134704 Background



This preview shows how black text looks on a background with the Decimal color 14134704.



This preview shows how white text looks on a background with the Decimal color 14134704.

Color Blindness Simulation

Color vision deficiency is a very complex topic, and I could not describe the different causes any better than Wikipedia does, so if you want to learn more, you should check out their [article about color blindness](#).


Dichromacy



Original Color
14134704

Protanopia
12302261

Deuteranopia
13414831



Tritanopia
14199993

Trichromacy



Original Color
14134704

Protanomaly
12956595

Deuteranomaly
13676719

Tritanomaly
14199990

Monochromacy



Original Color
14134704

Achromatopsia
12237498

Achromatomaly
12957110

CSS Examples

Text

The CSS property to change the color of the text to Decimal 14134704 is called "color". The color property can be set on classes, ids or directly on the HTML element.

This example shows how text in the color #D7ADB0 looks like.

```
.text, #text, p{  
    color:#D7ADB0  
}
```

If you want to add a text shadow in that color use the text-shadow property, you can generate a text shadow directly with our [CSS Text Shadow Generator](#).

Here you see how black text with a 4 pixel #D7ADB0 colored shadow looks like.

```
.shadow{ text-shadow: 4px 4px 2px #D7ADB0
}
```

Border

The CSS property to change the border of an element to Decimal 14134704 is called "border". The border property can be set on classes, ids or directly on the HTML element.

This example shows the color as border, it can be applied via the CSS property "border" or "border-color".

```
.border, #border, table{ border:4px solid
#D7ADB0 }
```

If only the border color should be changed use the property `border-color`.

```
.border{ border-color:#D7ADB0 }
```

If you want to add a box shadow in that color use:

Here you see how a box with a 4 pixel #D7ADB0 colored shadow looks like.

```
.boxshadow{ -moz-box-shadow:4px 4px 4px  
4px #D7ADB0; -webkit-box-shadow:4px 4px  
4px 4px #D7ADB0; box-shadow:4px 4px 4px  
4px #D7ADB0 }
```

Background

The CSS property to change the background color of an element to Decimal 14134704 is called "background". The background property can be set on classes, ids or directly on the HTML element.

```
.background, #background, body{  
background:#D7ADB0 }
```

If only the background color should be changed can be used:

```
.background{ background-color:#D7ADB0 }
```

This example shows the color as background, it is applied via the CSS property "background".

To optimize and compress your CSS code, you can use our [online CSS compressor and optimizer](#) based on csstidy. If you want to create a linear or radial gradient as background or border, check our [CSS Gradient Generator](#).

Hey! You found this booklet interesting? Support Converting Colors with the new Membership Option!

The pro membership hides all ads, plus gives you double the colors in the color bucket, and more awesome pro features!

[Learn more, Memberships starting at \\$2.50/m!](#)

**Follow me
on Twitter!**

@ConvertingColor