

Converting Colors

Decimal(14134946)

Have a look what the booklet for
Decimal(14134946) contains.

Decimal(14134946)	3
<i>Conversions</i>	4
<i>Details</i>	6
<i>Harmonies</i>	11
<i>Previews</i>	23
<i>Color Blindness Simulation</i>	26
<i>CSS Examples</i>	29

Color

Decimal(14134946)

Conversions

Conversions Part 1

Format	Color
Hex	D7AEA2
RGB	215, 174, 162
RGB Percent	84%, 68%, 64%
CMY	0.1569, 0.3176, 0.3647
CMYK	0.00, 0.19, 0.25, 0.16
HSL	14°, 40%, 74%
HSV	14°, 25%, 84%
XYZ	49.6820, 47.3278, 40.6991
YIQ	184.8910, 28.2880, 4.9600

Conversions

Conversions Part 2

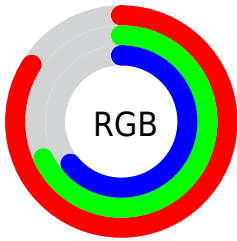
Format	Color
R_{YB}	215, 178, 162
Decimal	14134946
CIE _{Lab}	74.40, 13.12, 11.79
CIE _{LCh}	74, 17.639, 41.948
Yxy	47.3278, 0.3608, 0.3437
Android (android.graphics.Color)	4292325026 (0xFFD7AEA2)
YUV	184.8910, -11.2853, 26.4056
Hunter-Lab	68.7952, 8.5161, 13.0808

Details

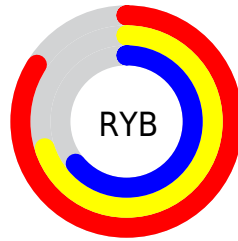
The Decimal color **14134946** is a light color, and the websafe version is hex **CC9999**. A complement of this color would be **10669015**, and the grayscale version is **12171705**.

A 20% lighter version of the original color is **16770777**, and **10451566** is the 20% darker color. If you saturate the color by 10%, you get **14130572**, and if you desaturate by 10%, it is **14139320**.

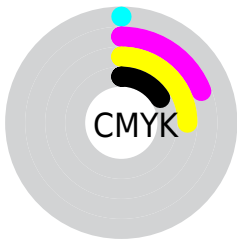
Distribution



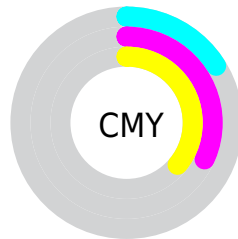
- Red (84%)
- Green (68%)
- Blue (64%)



- Red (84%)
- Yellow (70%)
- Blue (64%)



- Cyan (0%)
- Magenta (19%)
- Yellow (25%)
- Black (16%)



- Cyan (16%)
- Magenta (32%)
- Yellow (36%)

Brightness & Saturation Gradients

These gradients show how the Decimal color 14134946 changes by changing the brightness by 10 percent. The first figure shows a shift by +10% for each color and the second figure -10%.

Similar to the brightness gradients but the following saturation gradients show a change of the Decimal color 14134946 by changing the saturation by 10% instead.

 14134946

 14134946

16777215

 12293000

 16770777

 10451566

 16777205

 8741206

 7031103

 5386793

 3742996

 2360576

 0

 14134946

 14134946

■ 14130572

■ 14139320

■ 14126455

■ 14143437

■ 14122081

■ 14147811

■ 14117708

■ 14152184

■ 14113590

■ 14155775

■ 14109217

■ 14105099

■ 14102784

Harmonies

Analogous

The Analogous color harmony consists of three colors that are next to each other on the color wheel.



14265521



14134946



13480857

Triad

The Triadic color harmony groups three colors that are evenly spaced from another and form a triangle on the color wheel.



14134946



10076332



11384534

Complementary

The Complementary color scheme is a pair of colors which are on the opposite of each other on the color wheel.



14134946



10669015

Split Complementary

Split-complementary colors differ from the complementary color scheme. The scheme consists of three colors, the original color and two neighbors of the complement color.



10075093



14134946



9355709

Square

The Square scheme is like the rectangle color scheme, but the four colors are evenly spaced on the color wheel.



14134946



11189663



9289676



12759503

Rectangle

The Rectangle color scheme consists of four colors that form a rectangle on the color wheel.



14134946



12826263



9289676



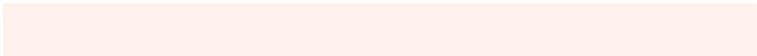
10926295

Sweetspot

The Sweet Spot groups the original color and five complimentary colors.



14134946



16773613



14131916



8419445



0



8421504

Same Dimension

The Same Dimension uses a secret algorithm to generate beautiful new colors.



14134946



16762035



14141602



7037792



11216640



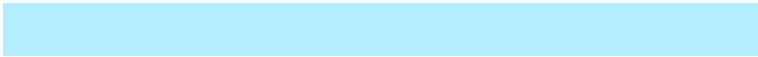
2820608

Inverse Universe

The Inverse Universe completely reimagines the original color for something new.



10669015



11792127



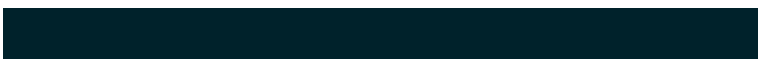
10662359



6318443



33963



8747

Previews

White Background



This preview shows how the Decimal color 14134946 looks on a white background.

Color Contrast Check

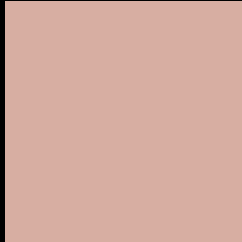
Large Text (above 18pt) WCAG AA × Fail

Any Text WCAG AA × Fail

Large Text (above 18pt) WCAG AAA × Fail

Any Text WCAG AAA × Fail

Black Background



This preview shows how the Decimal color 14134946 looks on a black background.

Color Contrast Check

Large Text (above 18pt) WCAG AA ✓ Pass

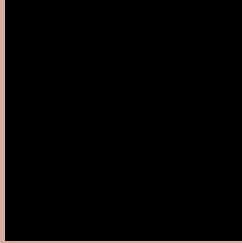
Any Text WCAG AA ✓ Pass

Large Text (above 18pt) WCAG AAA ✓ Pass

Any Text WCAG AAA ✓ Pass

If you want to check with other color combinations, try the [Color Contrast Checker](#).

Decimal 14134946 Background



This preview shows how black text looks on a background with the Decimal color 14134946.




This preview shows how white text looks on a background with the Decimal color 14134946.

Color Blindness Simulation

Color vision deficiency is a very complex topic, and I could not describe the different causes any better than Wikipedia does, so if you want to learn more, you should check out their [article about color blindness](#).

Dichromacy





Tritanopia
14330808

Trichromacy



Original Color
14134946

Protanomaly
13087909

Deuteranomaly
13873314

Tritanomaly
14265520

Monochromacy



Original Color
14134946

Achromatopsia
12171705

Achromatomaly
12891569

CSS Examples

Text

The CSS property to change the color of the text to Decimal 14134946 is called "color". The color property can be set on classes, ids or directly on the HTML element.

This example shows how text in the color #D7AEA2 looks like.

```
.text, #text, p{  
  color:#D7AEA2  
}
```

If you want to add a text shadow in that color use the text-shadow property, you can generate a text shadow directly with our [CSS Text Shadow Generator](#).

Here you see how black text with a 4 pixel #D7AEA2 colored shadow looks like.

```
.shadow{ text-shadow: 4px 4px 2px #D7AEA2
}
```

Border

The CSS property to change the border of an element to Decimal 14134946 is called "border". The border property can be set on classes, ids or directly on the HTML element.

This example shows the color as border, it can be applied via the CSS property "border" or "border-color".

```
.border, #border, table{ border:4px solid
#D7AEA2 }
```

If only the border color should be changed use the property `border-color`.

```
.border{ border-color:#D7AEA2 }
```

If you want to add a box shadow in that color use:

Here you see how a box with a 4 pixel #D7AEA2 colored shadow looks like.

```
.boxshadow{ -moz-box-shadow:4px 4px 4px  
4px #D7AEA2; -webkit-box-shadow:4px 4px  
4px 4px #D7AEA2; box-shadow:4px 4px 4px  
4px #D7AEA2 }
```

Background

The CSS property to change the background color of an element to Decimal 14134946 is called "background". The background property can be set on classes, ids or directly on the HTML element.

```
.background, #background, body{  
background:#D7AEA2 }
```

If only the background color should be changed can be used:

```
.background{ background-color:#D7AEA2 }
```

This example shows the color as background, it is applied via the CSS property "background".

To optimize and compress your CSS code, you can use our [online CSS compressor and optimizer](#) based on csstidy. If you want to create a linear or radial gradient as background or border, check our [CSS Gradient Generator](#).

Hey! You found this booklet interesting? Support Converting Colors with the new Membership Option!

The pro membership hides all ads, plus gives you double the colors in the color bucket, and more awesome pro features!

[Learn more, Memberships starting at \\$2.50/m!](#)

**Follow me
on Twitter!**

@ConvertingColor