

Converting Colors

Decimal(14135991)

Have a look what the booklet for
Decimal(14135991) contains.

Decimal(14135991)	3
<i>Conversions</i>	4
<i>Details</i>	6
<i>Harmonies</i>	11
<i>Previews</i>	23
<i>Color Blindness Simulation</i>	26
<i>CSS Examples</i>	29

Color

Decimal(14135991)

Conversions

Conversions Part 1

Format	Color
Hex	D7B2B7
RGB	215, 178, 183
RGB Percent	84%, 70%, 72%
CMY	0.1569, 0.3020, 0.2824
CMYK	0.00, 0.17, 0.15, 0.16
HSL	352°, 32%, 77%
HSV	352°, 17%, 84%
XYZ	52.4920, 49.7068, 51.6275
YIQ	189.6330, 20.4470, 9.3990

Conversions

Conversions Part 2

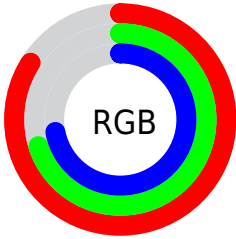
Format	Color
R _Y B	215, 178, 183
Decimal	14135991
CIE Lab	75.89, 14.15, 2.47
CIE LCh	76, 14.366, 9.911
Yxy	49.7068, 0.3412, 0.3231
Android (android.graphics.Color)	4292326071 (0xFFD7B2B7)
YUV	189.6330, -3.2701, 22.2469
Hunter-Lab	70.5030, 9.5192, 5.9356

Details

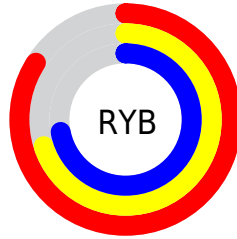
The Decimal color **14135991** is a light color, and the websafe version is hex **CC9999**. A complement of this color would be **11720658**, and the grayscale version is **12500670**.

A 20% lighter version of the original color is **16771823**, and **10517890** is the 20% darker color. If you saturate the color by 10%, you get **14130596**, and if you desaturate by 10%, it is **14141642**.

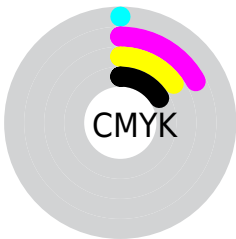
Distribution



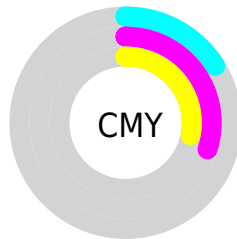
- Red (84%)
- Green (70%)
- Blue (72%)



- Red (84%)
- Yellow (70%)
- Blue (72%)



- Cyan (0%)
- Magenta (17%)
- Yellow (15%)
- Black (16%)



- Cyan (16%)
- Magenta (30%)
- Yellow (28%)

Brightness & Saturation Gradients

These gradients show how the Decimal color 14135991 changes by changing the brightness by 10 percent. The first figure shows a shift by +10% for each color and the second figure -10%.

Similar to the brightness gradients but the following saturation gradients show a change of the Decimal color 14135991 by changing the saturation by 10% instead.

 14135991

 14135991

16777215

 12294044

 16771823

 10517890

 8741993

 7097425

 5453114

 3874852

 2427407

 0

 14135991

 14135991

 14130596

 14141642

 14124946

 14147036

 14119295

 14152687

 14113901

 14155775

 14108250

 14102855

 14097205

 14091810

 14090269

Harmonies

Analogous

The Analogous color harmony consists of three colors that are next to each other on the color wheel.



13677508



14135991



14070955

Triad

The Triadic color harmony groups three colors that are evenly spaced from another and form a triangle on the color wheel.



14135991



11714471



10731476

Complementary

The Complementary color scheme is a pair of colors which are on the opposite of each other on the color wheel.



14135991



11720658

Split Complementary

Split-complementary colors differ from the complementary color scheme. The scheme consists of three colors, the original color and two neighbors of the complement color.



10142412



14135991



10797746

Square

The Square scheme is like the rectangle color scheme, but the four colors are evenly spaced on the color wheel.



14135991



12696737



10208191



11713493

Rectangle

The Rectangle color scheme consists of four colors that form a rectangle on the color wheel.



14135991



13743781



10208191



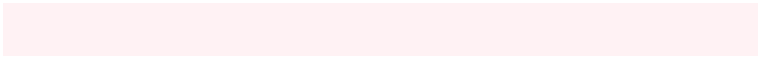
10469586

Sweetspot

The Sweet Spot groups the original color and five complimentary colors.



14135991



16773876



13742807



8419449



0



8421504

Same Dimension

The Same Dimension uses a secret algorithm to generate beautiful new colors.



14135991



16763345



14139314



7037026



11206679



2818054

Inverse Universe

The Inverse Universe completely reimagines the original color for something new.



14135991



16763345



11717335



7037026



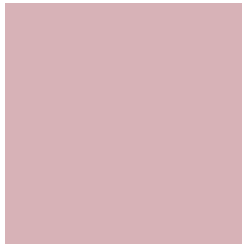
11206679



2818054

Previews

White Background



This preview shows how the Decimal color 14135991 looks on a white background.

Color Contrast Check

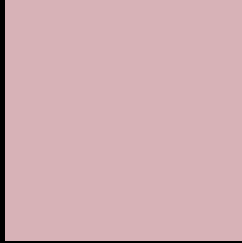
Large Text (above 18pt) WCAG AA × Fail

Any Text WCAG AA × Fail

Large Text (above 18pt) WCAG AAA × Fail

Any Text WCAG AAA × Fail

Black Background



This preview shows how the Decimal color 14135991 looks on a black background.

Color Contrast Check

Large Text (above 18pt) WCAG AA ✓ Pass

Any Text WCAG AA ✓ Pass

Large Text (above 18pt) WCAG AAA ✓ Pass

Any Text WCAG AAA ✓ Pass

If you want to check with other color combinations, try the [Color Contrast Checker](#).

Decimal 14135991 Background



This preview shows how black text looks on a background with the Decimal color 14135991.

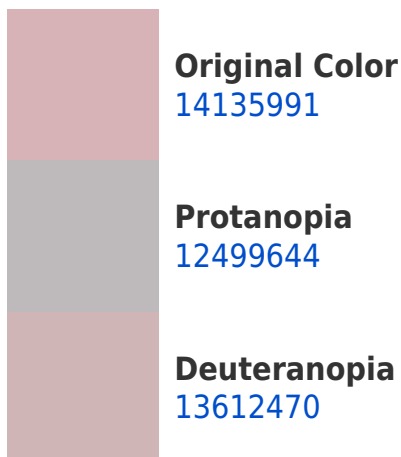


This preview shows how white text looks on a background with the Decimal color 14135991.

Color Blindness Simulation

Color vision deficiency is a very complex topic, and I could not describe the different causes any better than Wikipedia does, so if you want to learn more, you should check out their [article about color blindness](#).

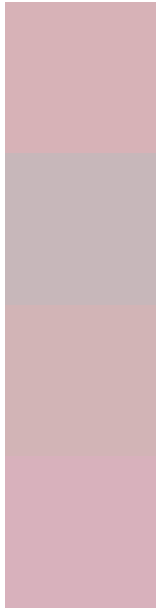
Dichromacy





Tritanopia
14201279

Trichromacy



Original Color
14135991

Protanomaly
13088698

Deuteranomaly
13808822

Tritanomaly
14201276

Monochromacy



Original Color
14135991

Achromatopsia
12500670

Achromatomaly
13089467

CSS Examples

Text

The CSS property to change the color of the text to Decimal 14135991 is called "color". The color property can be set on classes, ids or directly on the HTML element.

This example shows how text in the color #D7B2B7 looks like.

```
.text, #text, p{  
    color:#D7B2B7  
}
```

If you want to add a text shadow in that color use the text-shadow property, you can generate a text shadow directly with our [CSS Text Shadow Generator](#).

Here you see how black text with a 4 pixel #D7B2B7 colored shadow looks like.

```
.shadow{ text-shadow: 4px 4px 2px #D7B2B7
}
```

Border

The CSS property to change the border of an element to Decimal 14135991 is called "border". The border property can be set on classes, ids or directly on the HTML element.

This example shows the color as border, it can be applied via the CSS property "border" or "border-color".

```
.border, #border, table{ border:4px solid
#D7B2B7 }
```

If only the border color should be changed use the property `border-color`.

```
.border{ border-color:#D7B2B7 }
```

If you want to add a box shadow in that color use:

Here you see how a box with a 4 pixel #D7B2B7 colored shadow looks like.

```
.boxshadow{ -moz-box-shadow:4px 4px 4px  
4px #D7B2B7; -webkit-box-shadow:4px 4px  
4px 4px #D7B2B7; box-shadow:4px 4px 4px  
4px #D7B2B7 }
```

Background

The CSS property to change the background color of an element to Decimal 14135991 is called "background". The background property can be set on classes, ids or directly on the HTML element.

```
.background, #background, body{  
background:#D7B2B7 }
```

If only the background color should be changed can be used:

```
.background{ background-color:#D7B2B7 }
```

This example shows the color as background, it is applied via the CSS property "background".

To optimize and compress your CSS code, you can use our [online CSS compressor and optimizer](#) based on csstidy. If you want to create a linear or radial gradient as background or border, check our [CSS Gradient Generator](#).

Hey! You found this booklet interesting? Support Converting Colors with the new Membership Option!

The pro membership hides all ads, plus gives you double the colors in the color bucket, and more awesome pro features!

[Learn more, Memberships starting at \\$2.50/m!](#)

**Follow me
on Twitter!**

@ConvertingColor