

Converting Colors

Decimal(14136245)

Have a look what the booklet for
Decimal(14136245) contains.

Decimal(14136245)	3
<i>Conversions</i>	4
<i>Details</i>	6
<i>Harmonies</i>	11
<i>Previews</i>	23
<i>Color Blindness Simulation</i>	26
<i>CSS Examples</i>	29

Color

Decimal(14136245)

Conversions

Conversions Part 1

Format	Color
Hex	D7B3B5
RGB	215, 179, 181
RGB Percent	84%, 70%, 71%
CMY	0.1569, 0.2980, 0.2902
CMYK	0.00, 0.17, 0.16, 0.16
HSL	357°, 31%, 77%
HSV	357°, 17%, 84%
XYZ	52.4849, 50.0235, 50.6053
YIQ	189.9920, 20.8140, 8.2540

Conversions

Conversions Part 2

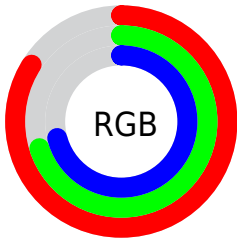
Format	Color
R _Y B	215, 179, 181
Decimal	14136245
CIE Lab	76.08, 13.29, 3.84
CIE LCh	76, 13.838, 16.130
Yxy	50.0235, 0.3428, 0.3267
Android (android.graphics.Color)	4292326325 (0xFFD7B3B5)
YUV	189.9920, -4.4331, 21.9320
Hunter-Lab	70.7273, 8.6876, 7.0871

Details

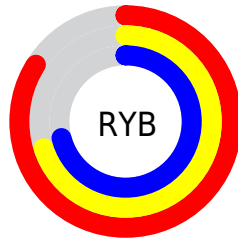
The Decimal color **14136245** is a light color, and the websafe version is hex **CC9999**. A complement of this color would be **11786197**, and the grayscale version is **12500670**.

A 20% lighter version of the original color is **16772077**, and **10518144** is the 20% darker color. If you saturate the color by 10%, you get **14130849**, and if you desaturate by 10%, it is **14141897**.

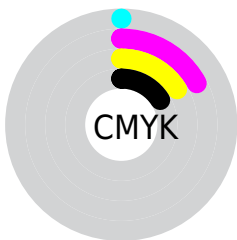
Distribution



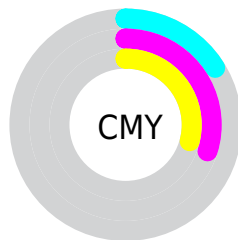
- Red (84%)
- Green (70%)
- Blue (71%)



- Red (84%)
- Yellow (70%)
- Blue (71%)



- Cyan (0%)
- Magenta (17%)
- Yellow (16%)
- Black (16%)



- Cyan (16%)
- Magenta (30%)
- Yellow (29%)

Brightness & Saturation Gradients

These gradients show how the Decimal color 14136245 changes by changing the brightness by 10 percent. The first figure shows a shift by +10% for each color and the second figure -10%.

Similar to the brightness gradients but the following saturation gradients show a change of the Decimal color 14136245 by changing the saturation by 10% instead.

 14136245

 14136245

16777215

 12294298

 16772077

 10518144

 8742247

 7097679

 5453368

 3874851

 2427661

 0

 14136245

 14136245

 14130849


 14141897

 14125196

 14147294

 14119800

 14152690

 14114148

 14155775

 14108495

 14103099

 14097447

 14092051

 14090252

Harmonies

Analogous

The Analogous color harmony consists of three colors that are next to each other on the color wheel.



13808578



14136245



14005674

Triad

The Triadic color harmony groups three colors that are evenly spaced from another and form a triangle on the color wheel.



14136245



11583914



10993620

Complementary

The Complementary color scheme is a pair of colors which are on the opposite of each other on the color wheel.



14136245



11786197

Split Complementary

Split-complementary colors differ from the complementary color scheme. The scheme consists of three colors, the original color and two neighbors of the complement color.



10339021



14136245



10732469

Square

The Square scheme is like the rectangle color scheme, but the four colors are evenly spaced on the color wheel.



14136245



12565923



10273730



12040916

Rectangle

The Rectangle color scheme consists of four colors that form a rectangle on the color wheel.



14136245



13612965



10273730



10731731

Sweetspot

The Sweet Spot groups the original color and five complimentary colors.



14136245



16773875



14005207



8419448



0



8421504

Same Dimension

The Same Dimension uses a secret algorithm to generate beautiful new colors.



14136245



16764111



14140339



7037025



11206665



2818050

Inverse Universe

The Inverse Universe completely reimagines the original color for something new.



14136245



16764111



11782103



7037025



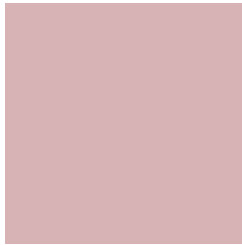
11206665



2818050

Previews

White Background



This preview shows how the Decimal color 14136245 looks on a white background.

Color Contrast Check

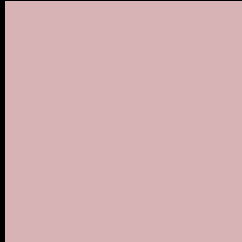
Large Text (above 18pt) WCAG AA × Fail

Any Text WCAG AA × Fail

Large Text (above 18pt) WCAG AAA × Fail

Any Text WCAG AAA × Fail

Black Background



This preview shows how the Decimal color 14136245 looks on a black background.

Color Contrast Check

Large Text (above 18pt) WCAG AA ✓ Pass

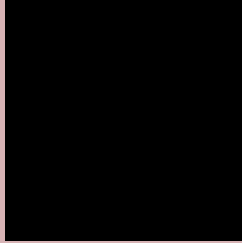
Any Text WCAG AA ✓ Pass

Large Text (above 18pt) WCAG AAA ✓ Pass

Any Text WCAG AAA ✓ Pass

If you want to check with other color combinations, try the [Color Contrast Checker](#).

Decimal 14136245 Background



This preview shows how black text looks on a background with the Decimal color 14136245.



This preview shows how white text looks on a background with the Decimal color 14136245.

Color Blindness Simulation

Color vision deficiency is a very complex topic, and I could not describe the different causes any better than Wikipedia does, so if you want to learn more, you should check out their [article about color blindness](#).

Dichromacy



Original Color
14136245

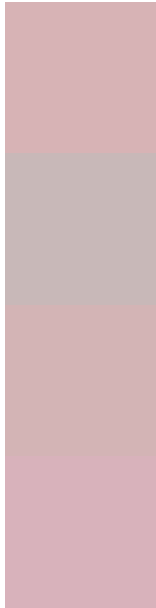
Protanopia
12630969

Deuteranopia
13743541



Tritanopia
14201279

Trichromacy



Original Color
14136245

Protanomaly
13154488

Deuteranomaly
13874357

Tritanomaly
14201531

Monochromacy



Original Color
14136245

Achromatopsia
12500670

Achromatomaly
13089467

CSS Examples

Text

The CSS property to change the color of the text to Decimal 14136245 is called "color". The color property can be set on classes, ids or directly on the HTML element.

This example shows how text in the color #D7B3B5 looks like.

```
.text, #text, p{  
  color:#D7B3B5  
}
```

If you want to add a text shadow in that color use the text-shadow property, you can generate a text shadow directly with our [CSS Text Shadow Generator](#).

Here you see how black text with a 4 pixel #D7B3B5 colored shadow looks like.

```
.shadow{ text-shadow: 4px 4px 2px #D7B3B5
}
```

Border

The CSS property to change the border of an element to Decimal 14136245 is called "border". The border property can be set on classes, ids or directly on the HTML element.

This example shows the color as border, it can be applied via the CSS property "border" or "border-color".

```
.border, #border, table{ border:4px solid
#D7B3B5 }
```

If only the border color should be changed use the property `border-color`.

```
.border{ border-color:#D7B3B5 }
```

If you want to add a box shadow in that color use:

Here you see how a box with a 4 pixel #D7B3B5 colored shadow looks like.

```
.boxshadow{ -moz-box-shadow:4px 4px 4px  
4px #D7B3B5; -webkit-box-shadow:4px 4px  
4px 4px #D7B3B5; box-shadow:4px 4px 4px  
4px #D7B3B5 }
```

Background

The CSS property to change the background color of an element to Decimal 14136245 is called "background". The background property can be set on classes, ids or directly on the HTML element.

```
.background, #background, body{  
background:#D7B3B5 }
```

If only the background color should be changed can be used:

```
.background{ background-color:#D7B3B5 }
```

This example shows the color as background, it is applied via the CSS property "background".

To optimize and compress your CSS code, you can use our [online CSS compressor and optimizer](#) based on csstidy. If you want to create a linear or radial gradient as background or border, check our [CSS Gradient Generator](#).

Hey! You found this booklet interesting? Support Converting Colors with the new Membership Option!

The pro membership hides all ads, plus gives you double the colors in the color bucket, and more awesome pro features!

[Learn more, Memberships starting at \\$2.50/m!](#)

**Follow me
on Twitter!**

@ConvertingColor