

# Converting Colors

Decimal(14136500)

Have a look what the booklet for  
Decimal(14136500) contains.

<b>Decimal(14136500)</b> .....	3
<i><b>Conversions</b></i> .....	4
<i><b>Details</b></i> .....	6
<i><b>Harmonies</b></i> .....	11
<i><b>Previews</b></i> .....	23
<i><b>Color Blindness Simulation</b></i> .....	26
<i><b>CSS Examples</b></i> .....	29

# **Color**

**Decimal(14136500)**

# Conversions

## Conversions Part 1

Format	Color
Hex	D7B4B4
RGB	215, 180, 180
RGB Percent	84%, 71%, 71%
CMY	0.1569, 0.2941, 0.2941
CMYK	0.00, 0.16, 0.16, 0.16
HSL	0°, 30%, 77%
HSV	0°, 16%, 84%
XYZ	52.5838, 50.3849, 50.1338
YIQ	190.4650, 20.8600, 7.4200

# Conversions

## Conversions Part 2

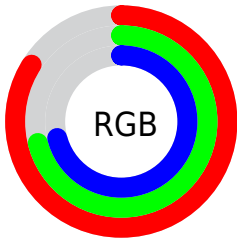
Format	Color
R <sub>Y</sub> B	215, 180, 180
Decimal	14136500
CIE Lab	76.30, 12.60, 4.71
CIE LCh	76, 13.449, 20.494
Yxy	50.3849, 0.3435, 0.3291
Android (android.graphics.Color)	4292326580 (0xFFD7B4B4)
YUV	190.4650, -5.1592, 21.5172
Hunter-Lab	70.9823, 8.0141, 7.8119

# Details

The Decimal color **14136500** is a light color, and the websafe version is hex **CC9999**. A complement of this color would be **11851735**, and the grayscale version is **12566463**.

A 20% lighter version of the original color is **16772332**, and **10518399** is the 20% darker color. If you saturate the color by 10%, you get **14131103**, and if you desaturate by 10%, it is **14142154**.

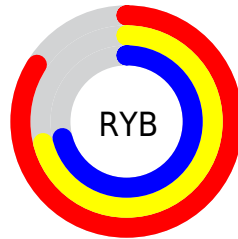
# Distribution



Red (84%)

Green (71%)

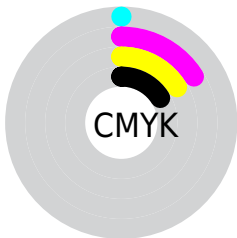
Blue (71%)



Red (84%)

Yellow (71%)

Blue (71%)

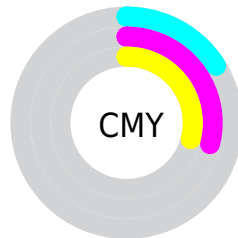


Cyan (0%)

Magenta (16%)

Yellow (16%)

Black (16%)



Cyan (16%)

Magenta (29%)

Yellow (29%)

# Brightness & Saturation Gradients

These gradients show how the Decimal color 14136500 changes by changing the brightness by 10 percent. The first figure shows a shift by +10% for each color and the second figure -10%.

Similar to the brightness gradients but the following saturation gradients show a change of the Decimal color 14136500 by changing the saturation by 10% instead.



 14136500

 14136500

16777215

 12294553

 16772332

 10518399

 8742502

 7097934

 5453624

 3875106


 2427916

 0

 14136500

 14136500


 14131103

 14142154

 14125449

 14147551

 14120052

 14153205

 14114398

 14155775

 14109001

 14103347

 14097950

 14092296

 14090240

# Harmonies

## Analogous

The Analogous color harmony consists of three colors that are next to each other on the color wheel.



13874369



14136500



13940393

# Triad

The Triadic color harmony groups three colors that are evenly spaced from another and form a triangle on the color wheel.



14136500



11518380



11189972

# Complementary

The Complementary color scheme is a pair of colors which are on the opposite of each other on the color wheel.



14136500



11851735

# Split Complementary

Split-complementary colors differ from the complementary color scheme. The scheme consists of three colors, the original color and two neighbors of the complement color.



10470095



14136500



10732472

# Square

The Square scheme is like the rectangle color scheme, but the four colors are evenly spaced on the color wheel.



14136500



12435109



10339268



12237523

# Rectangle

The Rectangle color scheme consists of four colors that form a rectangle on the color wheel.



14136500



13547941



10339268



10928339

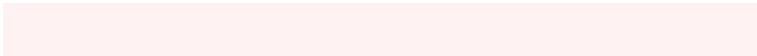


# Sweetspot

The Sweet Spot groups the original color and five complimentary colors.



14136500



16773874



14136535



8419448



0



8421504



# Same Dimension

The Same Dimension uses a secret algorithm to generate beautiful new colors.



14136500



16764108



14141108



7037024



11206656



2818048



# Inverse Universe

The Inverse Universe completely reimagines the original color for something new.



11851735



13434879



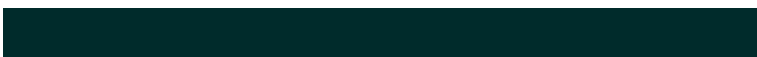
11847383



6318955



43947

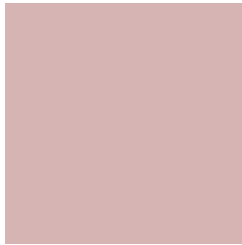


11051



# Previews

## White Background



This preview shows how the Decimal color 14136500 looks on a white background.

## Color Contrast Check

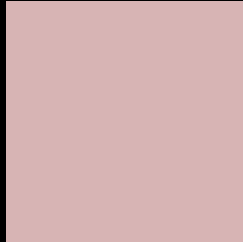
Large Text (above 18pt) WCAG AA × Fail

Any Text WCAG AA × Fail

Large Text (above 18pt) WCAG AAA × Fail

Any Text WCAG AAA × Fail

# Black Background



This preview shows how the Decimal color 14136500 looks on a black background.

## Color Contrast Check

Large Text (above 18pt) WCAG AA ✓ Pass

Any Text WCAG AA ✓ Pass

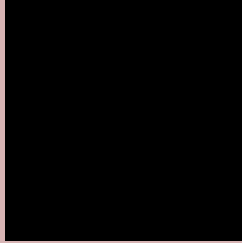
Large Text (above 18pt) WCAG AAA ✓ Pass

Any Text WCAG AAA ✓ Pass

If you want to check with other color combinations, try the [Color Contrast Checker](#).



## Decimal 14136500 Background



This preview shows how black text looks on a background with the Decimal color 14136500.



This preview shows how white text looks on a background with the Decimal color 14136500.

# Color Blindness Simulation

Color vision deficiency is a very complex topic, and I could not describe the different causes any better than Wikipedia does, so if you want to learn more, you should check out their [article about color blindness](#).

## Dichromacy





**Tritanopia**  
14267072

# Trichromacy



**Original Color**  
14136500

**Protanomaly**  
13220279

**Deuteranomaly**  
13940148

**Tritanomaly**  
14201788

# Monochromacy



**Original Color**  
14136500

**Achromatopsia**  
12500670

**Achromatomaly**  
13089466

# CSS Examples

## Text

The CSS property to change the color of the text to Decimal 14136500 is called "color". The color property can be set on classes, ids or directly on the HTML element.

This example shows how text in the color #D7B4B4 looks like.

```
.text, #text, p{  
    color:#D7B4B4  
}
```

If you want to add a text shadow in that color use the text-shadow property, you can generate a text shadow directly with our [CSS Text Shadow Generator](#).

Here you see how black text with a 4 pixel #D7B4B4 colored shadow looks like.

```
.shadow{ text-shadow: 4px 4px 2px #D7B4B4
}
```

## Border

The CSS property to change the border of an element to Decimal 14136500 is called "border". The border property can be set on classes, ids or directly on the HTML element.

This example shows the color as border, it can be applied via the CSS property "border" or "border-color".

```
.border, #border, table{ border:4px solid
#D7B4B4 }
```

If only the border color should be changed use the property `border-color`.

```
.border{ border-color:#D7B4B4 }
```

If you want to add a box shadow in that color use:

Here you see how a box with a 4 pixel #D7B4B4 colored shadow looks like.

```
.boxshadow{ -moz-box-shadow:4px 4px 4px  
4px #D7B4B4; -webkit-box-shadow:4px 4px  
4px 4px #D7B4B4; box-shadow:4px 4px 4px  
4px #D7B4B4 }
```

# Background

The CSS property to change the background color of an element to Decimal 14136500 is called "background". The background property can be set on classes, ids or directly on the HTML element.

```
.background, #background, body{  
background:#D7B4B4 }
```

If only the background color should be changed can be used:

```
.background{ background-color:#D7B4B4 }
```

This example shows the color as background, it is applied via the CSS property "background".

To optimize and compress your CSS code, you can use our [online CSS compressor and optimizer](#) based on csstidy. If you want to create a linear or radial gradient as background or border, check our [CSS Gradient Generator](#).



Hey! You found this booklet interesting? Support Converting Colors with the new Membership Option!

The pro membership hides all ads, plus gives you double the colors in the color bucket, and more awesome pro features!

**[Learn more, Memberships starting at \\$2.50/m!](#)**

**Follow me  
on Twitter!**

@ConvertingColor