

Converting Colors

Decimal(14136502)

Have a look what the booklet for
Decimal(14136502) contains.

Decimal(14136502)	3
<i>Conversions</i>	4
<i>Details</i>	6
<i>Harmonies</i>	11
<i>Previews</i>	23
<i>Color Blindness Simulation</i>	26
<i>CSS Examples</i>	29

Color

Decimal(14136502)

Conversions

Conversions Part 1

Format	Color
Hex	D7B4B6
RGB	215, 180, 182
RGB Percent	84%, 71%, 71%
CMY	0.1569, 0.2941, 0.2863
CMYK	0.00, 0.16, 0.15, 0.16
HSL	357°, 30%, 77%
HSV	357°, 16%, 84%
XYZ	52.7891, 50.4670, 51.2148
YIQ	190.6930, 20.2180, 8.0420

Conversions

Conversions Part 2

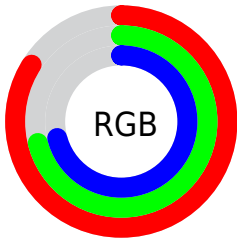
Format	Color
R _Y B	215, 180, 182
Decimal	14136502
CIE Lab	76.36, 12.92, 3.69
CIE LCh	76, 13.433, 15.957
Yxy	50.4670, 0.3417, 0.3267
Android (android.graphics.Color)	4292326582 (0xFFD7B4B6)
YUV	190.6930, -4.2856, 21.3172
Hunter-Lab	71.0401, 8.3211, 6.9843

Details

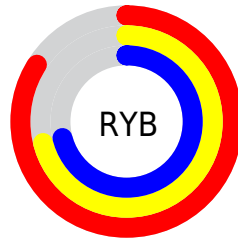
The Decimal color **14136502** is a light color, and the websafe version is hex **CC9999**. A complement of this color would be **11851733**, and the grayscale version is **12566463**.

A 20% lighter version of the original color is **16772334**, and **10518401** is the 20% darker color. If you saturate the color by 10%, you get **14131106**, and if you desaturate by 10%, it is **14142154**.

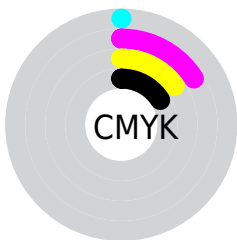
Distribution



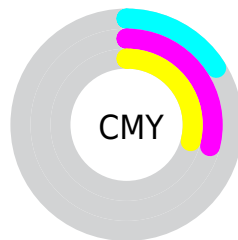
- Red (84%)
- Green (71%)
- Blue (71%)



- Red (84%)
- Yellow (71%)
- Blue (71%)



- Cyan (0%)
- Magenta (16%)
- Yellow (15%)
- Black (16%)



- Cyan (16%)
- Magenta (29%)
- Yellow (29%)

Brightness & Saturation Gradients

These gradients show how the Decimal color 14136502 changes by changing the brightness by 10 percent. The first figure shows a shift by +10% for each color and the second figure -10%.

Similar to the brightness gradients but the following saturation gradients show a change of the Decimal color 14136502 by changing the saturation by 10% instead.

 14136502

 14136502

16777215

 12294555


 16772334

 10518401

 8742504

 7097936

 5453625

 3875108


 2427918

 0

 14136502

 14136502

 14131106

 14142154

 14125453

 14147551

 14120057

 14153203

 14114405

 14155775

 14109009

 14103356

 14097960

 14092308

 14090252

Harmonies

Analogous

The Analogous color harmony consists of three colors that are next to each other on the color wheel.



13808835



14136502



14005931

Triad

The Triadic color harmony groups three colors that are evenly spaced from another and form a triangle on the color wheel.



14136502



11649451



11059156

Complementary

The Complementary color scheme is a pair of colors which are on the opposite of each other on the color wheel.



14136502



11851733

Split Complementary

Split-complementary colors differ from the complementary color scheme. The scheme consists of three colors, the original color and two neighbors of the complement color.



10470094



14136502



10798006

Square

The Square scheme is like the rectangle color scheme, but the four colors are evenly spaced on the color wheel.



14136502



12566180



10339523



12041172

Rectangle

The Rectangle color scheme consists of four colors that form a rectangle on the color wheel.



14136502



13678758



10339523



10797267

Sweetspot

The Sweet Spot groups the original color and five complimentary colors.



14136502



16773875



14005463



8419448



0



8421504

Same Dimension

The Same Dimension uses a secret algorithm to generate beautiful new colors.



14136502



16764111



14140340



7037025



11206666



2818050

Inverse Universe

The Inverse Universe completely reimagines the original color for something new.



14136502



16764111



11847895



7037025



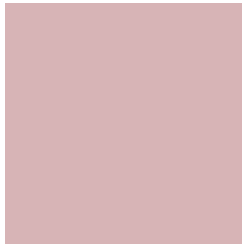
11206666



2818050

Previews

White Background



This preview shows how the Decimal color 14136502 looks on a white background.

Color Contrast Check

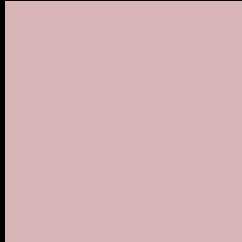
Large Text (above 18pt) WCAG AA × Fail

Any Text WCAG AA × Fail

Large Text (above 18pt) WCAG AAA × Fail

Any Text WCAG AAA × Fail

Black Background



This preview shows how the Decimal color 14136502 looks on a black background.

Color Contrast Check

Large Text (above 18pt) WCAG AA ✓ Pass

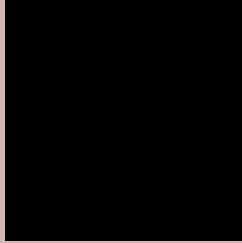
Any Text WCAG AA ✓ Pass

Large Text (above 18pt) WCAG AAA ✓ Pass

Any Text WCAG AAA ✓ Pass

If you want to check with other color combinations, try the [Color Contrast Checker](#).

Decimal 14136502 Background



This preview shows how black text looks on a background with the Decimal color 14136502.



This preview shows how white text looks on a background with the Decimal color 14136502.

Color Blindness Simulation

Color vision deficiency is a very complex topic, and I could not describe the different causes any better than Wikipedia does, so if you want to learn more, you should check out their [article about color blindness](#).

Dichromacy



Original Color
14136502

Protanopia
12631226

Deuteranopia
13743798



Tritanopia
14201536

Trichromacy



Original Color
14136502

Protanomaly
13154745

Deuteranomaly
13874614

Tritanomaly
14201788

Monochromacy



Original Color
14136502

Achromatopsia
12566463

Achromatomaly
13155260

CSS Examples

Text

The CSS property to change the color of the text to Decimal 14136502 is called "color". The color property can be set on classes, ids or directly on the HTML element.

This example shows how text in the color #D7B4B6 looks like.

```
.text, #text, p{  
    color:#D7B4B6  
}
```

If you want to add a text shadow in that color use the text-shadow property, you can generate a text shadow directly with our [CSS Text Shadow Generator](#).

Here you see how black text with a 4 pixel #D7B4B6 colored shadow looks like.

```
.shadow{ text-shadow: 4px 4px 2px #D7B4B6  
}
```

Border

The CSS property to change the border of an element to Decimal 14136502 is called "border". The border property can be set on classes, ids or directly on the HTML element.

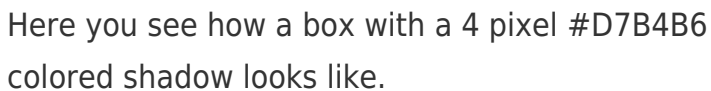
This example shows the color as border, it can be applied via the CSS property "border" or "border-color".

```
.border, #border, table{ border:4px solid  
#D7B4B6 }
```

If only the border color should be changed use the property `border-color`.

```
.border{ border-color:#D7B4B6 }
```

If you want to add a box shadow in that color use:



Here you see how a box with a 4 pixel #D7B4B6 colored shadow looks like.

```
.boxshadow{ -moz-box-shadow:4px 4px 4px  
4px #D7B4B6; -webkit-box-shadow:4px 4px  
4px 4px #D7B4B6; box-shadow:4px 4px 4px  
4px #D7B4B6 }
```

Background

The CSS property to change the background color of an element to Decimal 14136502 is called "background". The background property can be set on classes, ids or directly on the HTML element.

```
.background, #background, body{  
background:#D7B4B6 }
```

If only the background color should be changed can be used:

```
.background{ background-color:#D7B4B6 }
```

This example shows the color as background, it is applied via the CSS property "background".

To optimize and compress your CSS code, you can use our [online CSS compressor and optimizer](#) based on csstidy. If you want to create a linear or radial gradient as background or border, check our [CSS Gradient Generator](#).

Hey! You found this booklet interesting? Support Converting Colors with the new Membership Option!

The pro membership hides all ads, plus gives you double the colors in the color bucket, and more awesome pro features!

[Learn more, Memberships starting at \\$2.50/m!](#)

**Follow me
on Twitter!**

@ConvertingColor