

Converting Colors

Decimal(14137258)

Have a look what the booklet for
Decimal(14137258) contains.

Decimal(14137258)	3
<i>Conversions</i>	4
<i>Details</i>	6
<i>Harmonies</i>	11
<i>Previews</i>	23
<i>Color Blindness Simulation</i>	26
<i>CSS Examples</i>	29

Color

Decimal(14137258)

Conversions

Conversions Part 1

Format	Color
Hex	D7B7AA
RGB	215, 183, 170
RGB Percent	84%, 72%, 67%
CMY	0.1569, 0.2824, 0.3333
CMYK	0.00, 0.15, 0.21, 0.16
HSL	17°, 36%, 75%
HSV	17°, 21%, 84%
XYZ	52.2135, 51.2163, 45.1640
YIQ	191.0860, 23.2450, 2.7410

Conversions

Conversions Part 2

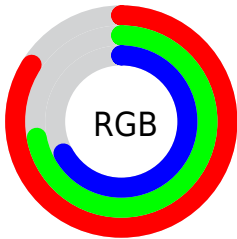
Format	Color
RYB	215, 188, 170
Decimal	14137258
CIELab	76.81, 9.46, 10.86
CIELCh	77, 14.400, 48.958
Yxy	51.2163, 0.3514, 0.3447
Android (android.graphics.Color)	4292327338 (0xFFD7B7AA)
YUV	191.0860, -10.3954, 20.9726
Hunter-Lab	71.5656, 4.9920, 12.6788

Details

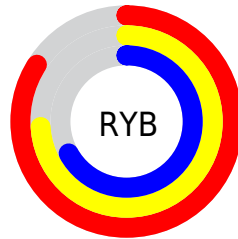
The Decimal color **14137258** is a light color, and the websafe version is hex **FFCCCC**. A complement of this color would be **11193047**, and the grayscale version is **12566463**.

A 20% lighter version of the original color is **16773089**, and **10519158** is the 20% darker color. If you saturate the color by 10%, you get **14133397**, and if you desaturate by 10%, it is **14141120**.

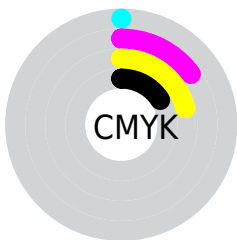
Distribution



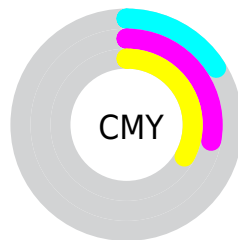
- Red (84%)
- Green (72%)
- Blue (67%)



- Red (84%)
- Yellow (74%)
- Blue (67%)



- Cyan (0%)
- Magenta (15%)
- Yellow (21%)
- Black (16%)



- Cyan (16%)
- Magenta (28%)
- Yellow (33%)

Brightness & Saturation Gradients

These gradients show how the Decimal color 14137258 changes by changing the brightness by 10 percent. The first figure shows a shift by +10% for each color and the second figure -10%.

Similar to the brightness gradients but the following saturation gradients show a change of the Decimal color 14137258 by changing the saturation by 10% instead.

 14137258

 14137258

16777215

 12295312

 16773089

 10519158

16777214

 8743261

 7033158

 5454383

 3875866

 2494208

 0

 14137258

 14137258

 14133397

 14141120

 14129279

 14145237

 14125418

 14149099

 14121556

 14152959

 14117694

 14155775

 14113577

 14109716

 14106112

Harmonies

Analogous

The Analogous color harmony consists of three colors that are next to each other on the color wheel.



14333365



14137258



13482916

Triad

The Triadic color harmony groups three colors that are evenly spaced from another and form a triangle on the color wheel.



14137258



10732984



12238039

Complementary

The Complementary color scheme is a pair of colors which are on the opposite of each other on the color wheel.



14137258



11193047

Split Complementary

Split-complementary colors differ from the complementary color scheme. The scheme consists of three colors, the original color and two neighbors of the complement color.



11190487



14137258



10274246

Square

The Square scheme is like the rectangle color scheme, but the four colors are evenly spaced on the color wheel.



14137258



11584428



10405073



13285583

Rectangle

The Rectangle color scheme consists of four colors that form a rectangle on the color wheel.



14137258



12893859



10405073



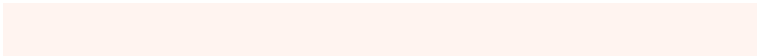
11845080

Sweetspot

The Sweet Spot groups the original color and five complimentary colors.



14137258



16774384



14133962



8419703



0



8421504

Same Dimension

The Same Dimension uses a secret algorithm to generate beautiful new colors.



14137258



16765631



14142890



7037792



11219200



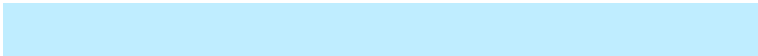
2821376

Inverse Universe

The Inverse Universe completely reimagines the original color for something new.



11193047



12578303



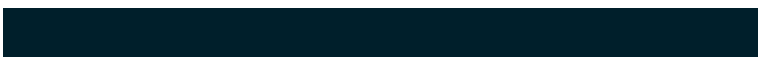
11187415



6318187



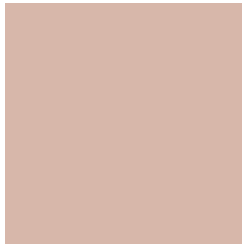
31147



7979

Previews

White Background



This preview shows how the Decimal color 14137258 looks on a white background.

Color Contrast Check

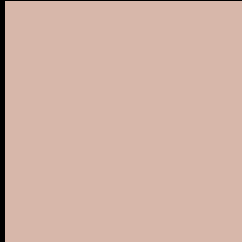
Large Text (above 18pt) WCAG AA × Fail

Any Text WCAG AA × Fail

Large Text (above 18pt) WCAG AAA × Fail

Any Text WCAG AAA × Fail

Black Background



This preview shows how the Decimal color 14137258 looks on a black background.

Color Contrast Check

Large Text (above 18pt) WCAG AA ✓ Pass

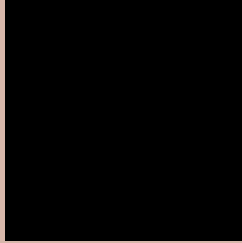
Any Text WCAG AA ✓ Pass

Large Text (above 18pt) WCAG AAA ✓ Pass

Any Text WCAG AAA ✓ Pass

If you want to check with other color combinations, try the [Color Contrast Checker](#).

Decimal 14137258 Background



This preview shows how black text looks on a background with the Decimal color 14137258.




This preview shows how white text looks on a background with the Decimal color 14137258.

Color Blindness Simulation

Color vision deficiency is a very complex topic, and I could not describe the different causes any better than Wikipedia does, so if you want to learn more, you should check out their [article about color blindness](#).

Dichromacy





Tritanopia
14333121

Trichromacy



Original Color
14137258

Protanomaly
13417388

Deuteranomaly
14137258

Tritanomaly
14267833

Monochromacy



Original Color
14137258

Achromatopsia
12566463

Achromatomaly
13155511

CSS Examples

Text

The CSS property to change the color of the text to Decimal 14137258 is called "color". The color property can be set on classes, ids or directly on the HTML element.

This example shows how text in the color #D7B7AA looks like.

```
.text, #text, p{  
    color:#D7B7AA  
}
```

If you want to add a text shadow in that color use the text-shadow property, you can generate a text shadow directly with our [CSS Text Shadow Generator](#).

Here you see how black text with a 4 pixel #D7B7AA colored shadow looks like.

```
.shadow{ text-shadow: 4px 4px 2px #D7B7AA }  
}
```

Border

The CSS property to change the border of an element to Decimal 14137258 is called "border". The border property can be set on classes, ids or directly on the HTML element.

This example shows the color as border, it can be applied via the CSS property "border" or "border-color".

```
.border, #border, table{ border:4px solid #D7B7AA }  
}
```

If only the border color should be changed use the property `border-color`.

```
.border{ border-color:#D7B7AA }
```

If you want to add a box shadow in that color use:

Here you see how a box with a 4 pixel #D7B7AA colored shadow looks like.

```
.boxshadow{ -moz-box-shadow:4px 4px 4px  
4px #D7B7AA; -webkit-box-shadow:4px 4px  
4px 4px #D7B7AA; box-shadow:4px 4px 4px  
4px #D7B7AA }
```

Background

The CSS property to change the background color of an element to Decimal 14137258 is called "background". The background property can be set on classes, ids or directly on the HTML element.

```
.background, #background, body{  
background:#D7B7AA }
```

If only the background color should be changed can be used:

```
.background{ background-color:#D7B7AA }
```

This example shows the color as background, it is applied via the CSS property "background".

To optimize and compress your CSS code, you can use our [online CSS compressor and optimizer](#) based on csstidy. If you want to create a linear or radial gradient as background or border, check our [CSS Gradient Generator](#).

Hey! You found this booklet interesting? Support Converting Colors with the new Membership Option!

The pro membership hides all ads, plus gives you double the colors in the color bucket, and more awesome pro features!

[Learn more, Memberships starting at \\$2.50/m!](#)

**Follow me
on Twitter!**

@ConvertingColor