

Converting Colors

Decimal(14137778)

Have a look what the booklet for
Decimal(14137778) contains.

Decimal(14137778)	3
<i>Conversions</i>	4
<i>Details</i>	6
<i>Harmonies</i>	11
<i>Previews</i>	23
<i>Color Blindness Simulation</i>	26
<i>CSS Examples</i>	29

Color

Decimal(14137778)

Conversions

Conversions Part 1

Format	Color
Hex	D7B9B2
RGB	215, 185, 178
RGB Percent	84%, 73%, 70%
CMY	0.1569, 0.2745, 0.3020
CMYK	0.00, 0.14, 0.17, 0.16
HSL	11°, 32%, 77%
HSV	11°, 17%, 84%
XYZ	53.4092, 52.3593, 49.4109
YIQ	193.1720, 20.1270, 4.1830

Conversions

Conversions Part 2

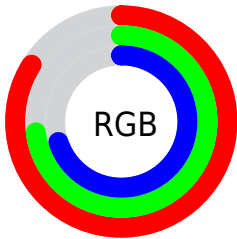
Format	Color
R _Y B	215, 187, 178
Decimal	14137778
CIE Lab	77.50, 9.60, 7.51
CIE LCh	77, 12.189, 38.014
Yxy	52.3593, 0.3442, 0.3374
Android (android.graphics.Color)	4292327858 (0xFFD7B9B2)
YUV	193.1720, -7.4798, 19.1432
Hunter-Lab	72.3598, 5.1223, 10.1656

Details

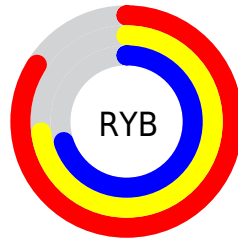
The Decimal color **14137778** is a light color, and the websafe version is hex **FFCCCC**. A complement of this color would be **11718871**, and the grayscale version is **12698049**.

A 20% lighter version of the original color is **16773610**, and **10519677** is the 20% darker color. If you saturate the color by 10%, you get **14133405**, and if you desaturate by 10%, it is **14142152**.

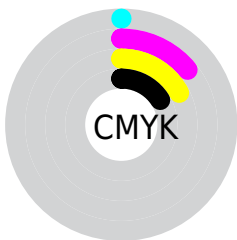
Distribution



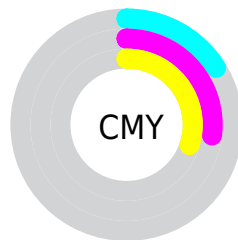
- Red (84%)
- Green (73%)
- Blue (70%)



- Red (84%)
- Yellow (73%)
- Blue (70%)



- Cyan (0%)
- Magenta (14%)
- Yellow (17%)
- Black (16%)



- Cyan (16%)
- Magenta (27%)
- Yellow (30%)

Brightness & Saturation Gradients

These gradients show how the Decimal color 14137778 changes by changing the brightness by 10 percent. The first figure shows a shift by +10% for each color and the second figure -10%.

Similar to the brightness gradients but the following saturation gradients show a change of the Decimal color 14137778 by changing the saturation by 10% instead.

 14137778

 14137778

16777215

 12295831

 16773610

 10519677

 8743780

 7098957

 5454646

 3876385

 2494730

 0

 14137778

 14137778

■ 14133405

■ 14142152

■ 14128775

■ 14146781

■ 14124401

■ 14151155

■ 14119772

■ 14155775

■ 14115398

■ 14110769

■ 14106395

■ 14102022

■ 14100736

Harmonies

Analogous

The Analogous color harmony consists of three colors that are next to each other on the color wheel.



14137533



14137778



13745323

Triad

The Triadic color harmony groups three colors that are evenly spaced from another and form a triangle on the color wheel.



14137778



11322807



12042198

Complementary

The Complementary color scheme is a pair of colors which are on the opposite of each other on the color wheel.



14137778



11718871

Split Complementary

Split-complementary colors differ from the complementary color scheme. The scheme consists of three colors, the original color and two neighbors of the complement color.



11256788



14137778



10864322

Square

The Square scheme is like the rectangle color scheme, but the four colors are evenly spaced on the color wheel.



14137778



12174254



10798541



12958929

Rectangle

The Rectangle color scheme consists of four colors that form a rectangle on the color wheel.



14137778



13287081



10798541



11780566

Sweetspot

The Sweet Spot groups the original color and five complimentary colors.



14137778



16774642



14136016



8419704



0



8421504

Same Dimension

The Same Dimension uses a secret algorithm to generate beautiful new colors.



14137778



16766153



14142386



7037536



11214848



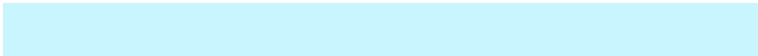
2820096

Inverse Universe

The Inverse Universe completely reimagines the original color for something new.



11718871



13235711



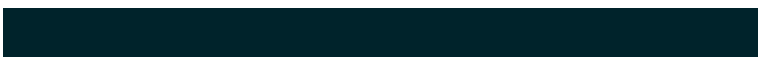
11714263



6318443



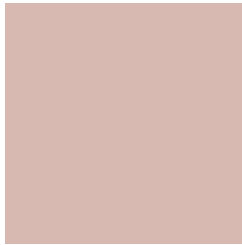
35755



9003

Previews

White Background



This preview shows how the Decimal color 14137778 looks on a white background.

Color Contrast Check

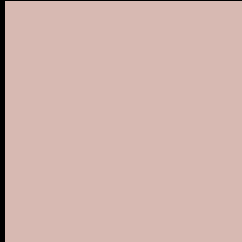
Large Text (above 18pt) WCAG AA × Fail

Any Text WCAG AA × Fail

Large Text (above 18pt) WCAG AAA × Fail

Any Text WCAG AAA × Fail

Black Background



This preview shows how the Decimal color 14137778 looks on a black background.

Color Contrast Check

Large Text (above 18pt) WCAG AA ✓ Pass

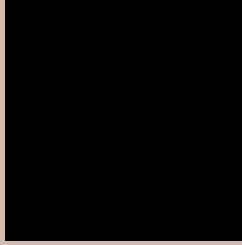
Any Text WCAG AA ✓ Pass

Large Text (above 18pt) WCAG AAA ✓ Pass

Any Text WCAG AAA ✓ Pass

If you want to check with other color combinations, try the [Color Contrast Checker](#).

Decimal 14137778 Background



This preview shows how black text looks on a background with the Decimal color 14137778.



This preview shows how white text looks on a background with the Decimal color 14137778.

Color Blindness Simulation

Color vision deficiency is a very complex topic, and I could not describe the different causes any better than Wikipedia does, so if you want to learn more, you should check out their [article about color blindness](#).


Dichromacy



Original Color
14137778

Protanopia
12959669

Deuteranopia
14137778



Tritanopia
14268100

Trichromacy



Original Color
14137778

Protanomaly
13417908

Deuteranomaly
14137778

Tritanomaly
14202813

Monochromacy



Original Color
14137778

Achromatopsia
12698049

Achromatomaly
13221564

CSS Examples

Text

The CSS property to change the color of the text to Decimal 14137778 is called "color". The color property can be set on classes, ids or directly on the HTML element.

This example shows how text in the color #D7B9B2 looks like.

```
.text, #text, p{  
  color:#D7B9B2  
}
```

If you want to add a text shadow in that color use the text-shadow property, you can generate a text shadow directly with our [CSS Text Shadow Generator](#).

Here you see how black text with a 4 pixel #D7B9B2 colored shadow looks like.

```
.shadow{ text-shadow: 4px 4px 2px #D7B9B2
}
```

Border

The CSS property to change the border of an element to Decimal 14137778 is called "border". The border property can be set on classes, ids or directly on the HTML element.

This example shows the color as border, it can be applied via the CSS property "border" or "border-color".

```
.border, #border, table{ border:4px solid
#D7B9B2 }
```

If only the border color should be changed use the property `border-color`.

```
.border{ border-color:#D7B9B2 }
```

If you want to add a box shadow in that color use:

Here you see how a box with a 4 pixel #D7B9B2 colored shadow looks like.

```
.boxshadow{ -moz-box-shadow:4px 4px 4px  
4px #D7B9B2; -webkit-box-shadow:4px 4px  
4px 4px #D7B9B2; box-shadow:4px 4px 4px  
4px #D7B9B2 }
```

Background

The CSS property to change the background color of an element to Decimal 14137778 is called "background". The background property can be set on classes, ids or directly on the HTML element.

```
.background, #background, body{  
background:#D7B9B2 }
```

If only the background color should be changed can be used:

```
.background{ background-color:#D7B9B2 }
```

This example shows the color as background, it is applied via the CSS property "background".

To optimize and compress your CSS code, you can use our [online CSS compressor and optimizer](#) based on csstidy. If you want to create a linear or radial gradient as background or border, check our [CSS Gradient Generator](#).

Hey! You found this booklet interesting? Support Converting Colors with the new Membership Option!

The pro membership hides all ads, plus gives you double the colors in the color bucket, and more awesome pro features!

[Learn more, Memberships starting at \\$2.50/m!](#)

**Follow me
on Twitter!**

@ConvertingColor