

# Converting Colors

Decimal(14138044)

Have a look what the booklet for  
Decimal(14138044) contains.

<b>Decimal(14138044)</b> .....	3
<i><b>Conversions</b></i> .....	4
<i><b>Details</b></i> .....	6
<i><b>Harmonies</b></i> .....	11
<i><b>Previews</b></i> .....	23
<i><b>Color Blindness Simulation</b></i> .....	26
<i><b>CSS Examples</b></i> .....	29

# **Color**

**Decimal(14138044)**

# Conversions

## Conversions Part 1

<b>Format</b>	<b>Color</b>
Hex	D7BABC
RGB	215, 186, 188
RGB Percent	84%, 73%, 74%
CMY	0.1569, 0.2706, 0.2627
CMYK	0.00, 0.13, 0.13, 0.16
HSL	356°, 27%, 79%
HSV	356°, 13%, 84%
XYZ	54.6603, 53.1957, 54.9638
YIQ	194.8990, 16.6420, 6.7700

# Conversions

## Conversions Part 2

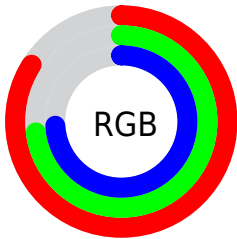
<b>Format</b>	<b>Color</b>
<a href="#">RYB</a>	<a href="#">215, 186, 188</a>
Decimal	<a href="#">14138044</a>
CIELab	<a href="#">77.99, 10.67, 2.81</a>
CIElCh	<a href="#">78, 11.029, 14.741</a>
Yxy	<a href="#">53.1957, 0.3357, 0.3267</a>
Android (android.graphics.Color)	<a href="#">4292328124 (0xFFD7BABC)</a>
YUV	<a href="#">194.8990, -3.4012, 17.6286</a>
Hunter-Lab	<a href="#">72.9354, 6.1372, 6.3741</a>

# Details

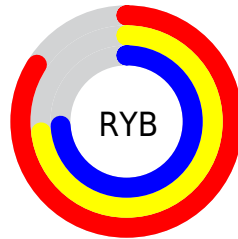
The Decimal color **14138044** is a light color, and the websafe version is hex **CCCCCC**. A complement of this color would be **12244949**, and the grayscale version is **12829635**.

A 20% lighter version of the original color is **16773876**, and **10519943** is the 20% darker color. If you saturate the color by 10%, you get **14132648**, and if you desaturate by 10%, it is **14143696**.

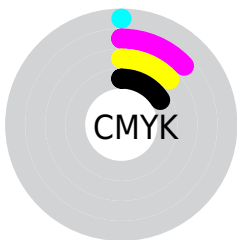
# Distribution



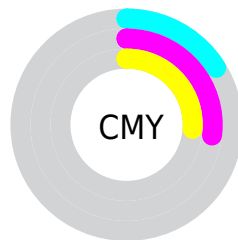
- Red (84%)
- Green (73%)
- Blue (74%)



- Red (84%)
- Yellow (73%)
- Blue (74%)



- Cyan (0%)
- Magenta (13%)
- Yellow (13%)
- Black (16%)



- Cyan (16%)
- Magenta (27%)
- Yellow (26%)

# Brightness & Saturation Gradients


These gradients show how the Decimal color 14138044 changes by changing the brightness by 10 percent. The first figure shows a shift by +10% for each color and the second figure -10%.

Similar to the brightness gradients but the following saturation gradients show a change of the Decimal color 14138044 by changing the saturation by 10% instead.





 14138044

 14138044

 14132648

 14143696

 14126996

 14149092

 14121600

 14154744

 14115948

 14155775

 14110296

 14104900

 14099504

 14093852

 14090255

# Harmonies

## Analogous

The Analogous color harmony consists of three colors that are next to each other on the color wheel.



13875910



14138044



14007219

# Triad

The Triadic color harmony groups three colors that are evenly spaced from another and form a triangle on the color wheel.



14138044



12109234



11584468

# Complementary

The Complementary color scheme is a pair of colors which are on the opposite of each other on the color wheel.



14138044



12244949

# Split Complementary

Split-complementary colors differ from the complementary color scheme. The scheme consists of three colors, the original color and two neighbors of the complement color.



11126479



14138044



11454395

# Square

The Square scheme is like the rectangle color scheme, but the four colors are evenly spaced on the color wheel.



14138044



12894893



11061190



12370132

# Rectangle

The Rectangle color scheme consists of four colors that form a rectangle on the color wheel.



14138044



13745583



11061190



11388115

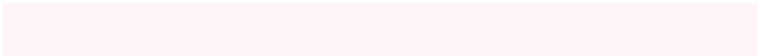


# Sweetspot

The Sweet Spot groups the original color and five complimentary colors.



14138044



16774646



14006999



8419706



0



8421504



# Same Dimension

The Same Dimension uses a secret algorithm to generate beautiful new colors.



14138044



16766681



14141114



7037025



11206668



2818051



# Inverse Universe

The Inverse Universe completely reimagines the original color for something new.



14138044



16766681



12241879



7037025



11206668

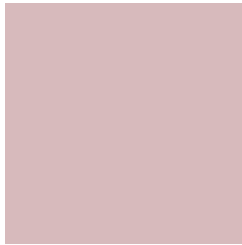


2818051



# Previews

## White Background



This preview shows how the Decimal color 14138044 looks on a white background.

## Color Contrast Check

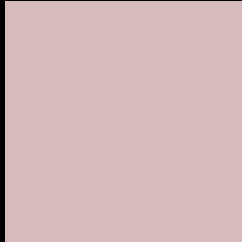
Large Text (above 18pt) WCAG AA × Fail

Any Text WCAG AA × Fail

Large Text (above 18pt) WCAG AAA × Fail

Any Text WCAG AAA × Fail

# Black Background



This preview shows how the Decimal color 14138044 looks on a black background.

## Color Contrast Check

Large Text (above 18pt) WCAG AA ✓ Pass

Any Text WCAG AA ✓ Pass

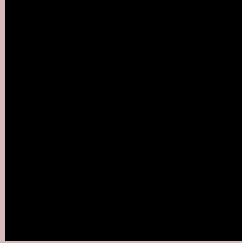
Large Text (above 18pt) WCAG AAA ✓ Pass

Any Text WCAG AAA ✓ Pass

If you want to check with other color combinations, try the [Color Contrast Checker](#).



## Decimal 14138044 Background



This preview shows how black text looks on a background with the Decimal color 14138044.



This preview shows how white text looks on a background with the Decimal color 14138044.

# Color Blindness Simulation

Color vision deficiency is a very complex topic, and I could not describe the different causes any better than Wikipedia does, so if you want to learn more, you should check out their [article about color blindness](#).

## Dichromacy





**Tritanopia**  
14203079

# Trichromacy



**Original Color**  
14138044

**Protanomaly**  
13418174

**Deuteranomaly**  
14072764

**Tritanomaly**  
14203331

# Monochromacy



**Original Color**  
14138044

**Achromatopsia**  
12829635

**Achromatomaly**  
13287616

# CSS Examples

## Text

The CSS property to change the color of the text to Decimal 14138044 is called "color". The color property can be set on classes, ids or directly on the HTML element.

This example shows how text in the color #D7BABC looks like.

```
.text, #text, p{  
  color:#D7BABC  
}
```

If you want to add a text shadow in that color use the text-shadow property, you can generate a text shadow directly with our [CSS Text Shadow Generator](#).

Here you see how black text with a 4 pixel #D7BABC colored shadow looks like.

```
.shadow{ text-shadow: 4px 4px 2px #D7BABC
}
```

## Border

The CSS property to change the border of an element to Decimal 14138044 is called "border". The border property can be set on classes, ids or directly on the HTML element.

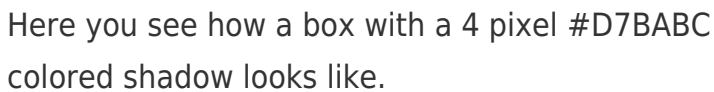
This example shows the color as border, it can be applied via the CSS property "border" or "border-color".

```
.border, #border, table{ border:4px solid
#D7BABC }
```

If only the border color should be changed use the property `border-color`.

```
.border{ border-color:#D7BABC }
```

If you want to add a box shadow in that color use:



Here you see how a box with a 4 pixel #D7BABC colored shadow looks like.

```
.boxshadow{ -moz-box-shadow:4px 4px 4px  
4px #D7BABC; -webkit-box-shadow:4px 4px  
4px 4px #D7BABC; box-shadow:4px 4px 4px  
4px #D7BABC }
```

# Background

The CSS property to change the background color of an element to Decimal 14138044 is called "background". The background property can be set on classes, ids or directly on the HTML element.

```
.background, #background, body{  
background:#D7BABC }
```

If only the background color should be changed can be used:

```
.background{ background-color:#D7BABC }
```

This example shows the color as background, it is applied via the CSS property "background".

To optimize and compress your CSS code, you can use our [online CSS compressor and optimizer](#) based on csstidy. If you want to create a linear or radial gradient as background or border, check our [CSS Gradient Generator](#).



Hey! You found this booklet interesting? Support Converting Colors with the new Membership Option!

The pro membership hides all ads, plus gives you double the colors in the color bucket, and more awesome pro features!

**[Learn more, Memberships starting at \\$2.50/m!](#)**

**Follow me  
on Twitter!**

@ConvertingColor