

Converting Colors

Decimal(14139078)

Have a look what the booklet for
Decimal(14139078) contains.

Decimal(14139078)	3
<i>Conversions</i>	4
<i>Details</i>	6
<i>Harmonies</i>	11
<i>Previews</i>	23
<i>Color Blindness Simulation</i>	26
<i>CSS Examples</i>	29

Color

Decimal(14139078)

Conversions

Conversions Part 1

Format	Color
Hex	D7BEC6
RGB	215, 190, 198
RGB Percent	84%, 75%, 78%
CMY	0.1569, 0.2549, 0.2235
CMYK	0.00, 0.12, 0.08, 0.16
HSL	341°, 24%, 79%
HSV	341°, 12%, 84%
XYZ	56.6308, 55.3512, 61.1252
YIQ	198.3870, 12.3320, 7.7880

Conversions

Conversions Part 2

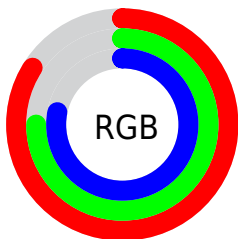
Format	Color
R _Y B	215, 190, 198
Decimal	14139078
CIE Lab	79.24, 10.20, -0.77
CIE LCh	79, 10.233, 355.658
Yxy	55.3512, 0.3271, 0.3198
Android (android.graphics.Color)	4292329158 (0xFFD7BEC6)
YUV	198.3870, -0.1908, 14.5696
Hunter-Lab	74.3984, 5.6741, 3.3666

Details

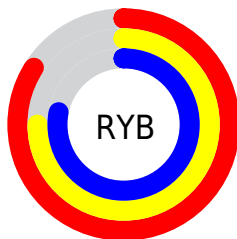
The Decimal color **14139078** is a light color, and the websafe version is hex **CCCCCC**. A complement of this color would be **12507087**, and the grayscale version is **13027014**.

A 20% lighter version of the original color is **16774911**, and **10520976** is the 20% darker color. If you saturate the color by 10%, you get **14133687**, and if you desaturate by 10%, it is **14144725**.

Distribution



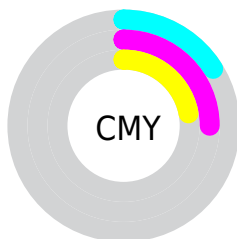
- Red (84%)
- Green (75%)
- Blue (78%)



- Red (84%)
- Yellow (75%)
- Blue (78%)



- Cyan (0%)
- Magenta (12%)
- Yellow (8%)
- Black (16%)



- Cyan (16%)
- Magenta (25%)
- Yellow (22%)

Brightness & Saturation Gradients

These gradients show how the Decimal color 14139078 changes by changing the brightness by 10 percent. The first figure shows a shift by +10% for each color and the second figure -10%.

Similar to the brightness gradients but the following saturation gradients show a change of the Decimal color 14139078 by changing the saturation by 10% instead.

 14139078

 14139078

16777215

 12297131

 16774911

 10520976

 8810359

 7100254

 5521222

 4008240

 2495771

 1114112

 0

 14139078

 14139078

 14133687

 14144725

 14128041

 14150115

 14122650

 14155762

 14117004

 14155775

 14111613

 14105966

 14100576

 14094929

 14090309

Harmonies

Analogous

The Analogous color harmony consists of three colors that are next to each other on the color wheel.



13680847



14139078



14270140

Triad

The Triadic color harmony groups three colors that are evenly spaced from another and form a triangle on the color wheel.



14139078



12830387



11585748

Complementary

The Complementary color scheme is a pair of colors which are on the opposite of each other on the color wheel.



14139078



12507087

Split Complementary

Split-complementary colors differ from the complementary color scheme. The scheme consists of three colors, the original color and two neighbors of the complement color.



11389644



14139078



12110265

Square

The Square scheme is like the rectangle color scheme, but the four colors are evenly spaced on the color wheel.



14139078



13550513



11586242



12174807

Rectangle

The Rectangle color scheme consists of four colors that form a rectangle on the color wheel.



14139078



14139319



11586242



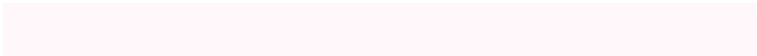
11454929

Sweetspot

The Sweet Spot groups the original color and five complimentary colors.



14139078



16775162



13614807



8419964



0



8421504

Same Dimension

The Same Dimension uses a secret algorithm to generate beautiful new colors.



14139078



16767975



14140094



7037028



11206711



2818062

Inverse Universe

The Inverse Universe completely reimagines the original color for something new.



14139078



16767975



12506071



7037028



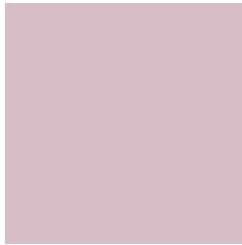
11206711



2818062

Previews

White Background



This preview shows how the Decimal color 14139078 looks on a white background.

Color Contrast Check

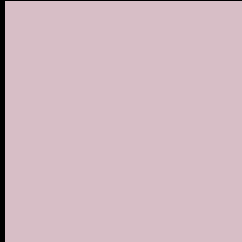
Large Text (above 18pt) WCAG AA × Fail

Any Text WCAG AA × Fail

Large Text (above 18pt) WCAG AAA × Fail

Any Text WCAG AAA × Fail

Black Background



This preview shows how the Decimal color 14139078 looks on a black background.

Color Contrast Check

Large Text (above 18pt) WCAG AA ✓ Pass

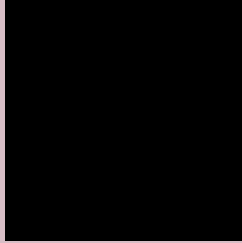
Any Text WCAG AA ✓ Pass

Large Text (above 18pt) WCAG AAA ✓ Pass

Any Text WCAG AAA ✓ Pass

If you want to check with other color combinations, try the [Color Contrast Checker](#).

Decimal 14139078 Background



This preview shows how black text looks on a background with the Decimal color 14139078.



This preview shows how white text looks on a background with the Decimal color 14139078.

Color Blindness Simulation

Color vision deficiency is a very complex topic, and I could not describe the different causes any better than Wikipedia does, so if you want to learn more, you should check out their [article about color blindness](#).


Dichromacy



Original Color
14139078

Protanopia
13026249

Deuteranopia
14073542



Tritanopia
14204364

Trichromacy



Original Color

14139078

Protanomaly

13418952

Deuteranomaly

14073542

Tritanomaly

14204362

Monochromacy



Original Color

14139078

Achromatopsia

13027014

Achromatomaly

13419462

CSS Examples

Text

The CSS property to change the color of the text to Decimal 14139078 is called "color". The color property can be set on classes, ids or directly on the HTML element.

This example shows how text in the color #D7BEC6 looks like.

```
.text, #text, p{  
    color:#D7BEC6  
}
```

If you want to add a text shadow in that color use the text-shadow property, you can generate a text shadow directly with our [CSS Text Shadow Generator](#).

Here you see how black text with a 4 pixel #D7BEC6 colored shadow looks like.

```
.shadow{ text-shadow: 4px 4px 2px #D7BEC6  
}
```

Border

The CSS property to change the border of an element to Decimal 14139078 is called "border". The border property can be set on classes, ids or directly on the HTML element.

This example shows the color as border, it can be applied via the CSS property "border" or "border-color".

```
.border, #border, table{ border:4px solid  
#D7BEC6 }
```

If only the border color should be changed use the property `border-color`.

```
.border{ border-color:#D7BEC6 }
```

If you want to add a box shadow in that color use:

Here you see how a box with a 4 pixel #D7BEC6 colored shadow looks like.

```
.boxshadow{ -moz-box-shadow:4px 4px 4px  
4px #D7BEC6; -webkit-box-shadow:4px 4px  
4px 4px #D7BEC6; box-shadow:4px 4px 4px  
4px #D7BEC6 }
```

Background

The CSS property to change the background color of an element to Decimal 14139078 is called "background". The background property can be set on classes, ids or directly on the HTML element.

```
.background, #background, body{  
background:#D7BEC6 }
```

If only the background color should be changed can be used:

```
.background{ background-color:#D7BEC6 }
```

This example shows the color as background, it is applied via the CSS property "background".

To optimize and compress your CSS code, you can use our [online CSS compressor and optimizer](#) based on csstidy. If you want to create a linear or radial gradient as background or border, check our [CSS Gradient Generator](#).

Hey! You found this booklet interesting? Support Converting Colors with the new Membership Option!

The pro membership hides all ads, plus gives you double the colors in the color bucket, and more awesome pro features!

[Learn more, Memberships starting at \\$2.50/m!](#)

**Follow me
on Twitter!**

@ConvertingColor