

Converting Colors

Decimal(14140103)

Have a look what the booklet for
Decimal(14140103) contains.

Decimal(14140103)	3
<i>Conversions</i>	4
<i>Details</i>	6
<i>Harmonies</i>	11
<i>Previews</i>	23
<i>Color Blindness Simulation</i>	26
<i>CSS Examples</i>	29

Color

Decimal(14140103)

Conversions

Conversions Part 1

Format	Color
Hex	D7C2C7
RGB	215, 194, 199
RGB Percent	84%, 76%, 78%
CMY	0.1569, 0.2392, 0.2196
CMYK	0.00, 0.10, 0.07, 0.16
HSL	346°, 21%, 80%
HSV	346°, 10%, 84%
XYZ	57.6249, 57.1542, 62.0275
YIQ	200.8490, 10.9110, 6.0070

Conversions

Conversions Part 2

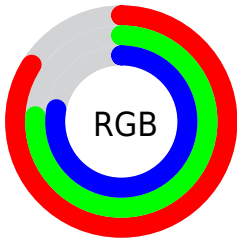
Format	Color
R _Y B	215, 194, 199
Decimal	14140103
CIE Lab	80.27, 8.24, 0.18
CIE LCh	80, 8.243, 1.260
Yxy	57.1542, 0.3259, 0.3233
Android (android.graphics.Color)	4292330183 (0xFFD7C2C7)
YUV	200.8490, -0.9116, 12.4104
Hunter-Lab	75.6004, 3.7575, 4.2748

Details

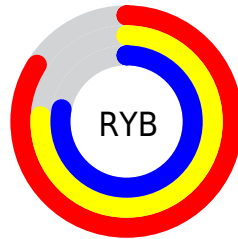
The Decimal color **14140103** is a light color, and the websafe version is hex **CCCCCC**. A complement of this color would be **12769234**, and the grayscale version is **13224393**.

A 20% lighter version of the original color is **16776191**, and **10521745** is the 20% darker color. If you saturate the color by 10%, you get **14134711**, and if you desaturate by 10%, it is **14145751**.

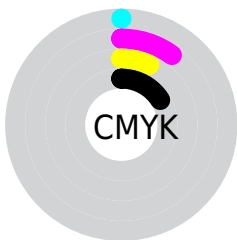
Distribution



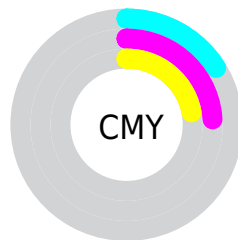
- Red (84%)
- Green (76%)
- Blue (78%)



- Red (84%)
- Yellow (76%)
- Blue (78%)



- Cyan (0%)
- Magenta (10%)
- Yellow (7%)
- Black (16%)



- Cyan (16%)
- Magenta (24%)
- Yellow (22%)

Brightness & Saturation Gradients

These gradients show how the Decimal color 14140103 changes by changing the brightness by 10 percent. The first figure shows a shift by +10% for each color and the second figure -10%.

Similar to the brightness gradients but the following saturation gradients show a change of the Decimal color 14140103 by changing the saturation by 10% instead.

 14140103

 14140103

16777215

 12298156

 16776191

 10521745

 8811384

 7166559

 5522247


 4009265

 2562076

 1310721

 0

 14140103

 14140103

 14134711

 14145751

 14129062

 14151144

 14123670

 14155768

 14118021

 14155775

 14112373

 14106981

 14101332

 14095940

 14090292

Harmonies

Analogous

The Analogous color harmony consists of three colors that are next to each other on the color wheel.



13812687



14140103



14205631

Triad

The Triadic color harmony groups three colors that are evenly spaced from another and form a triangle on the color wheel.



14140103



12962234



12110548

Complementary

The Complementary color scheme is a pair of colors which are on the opposite of each other on the color wheel.



14140103



12769234

Split Complementary

Split-complementary colors differ from the complementary color scheme. The scheme consists of three colors, the original color and two neighbors of the complement color.



11848655



14140103



12372927

Square

The Square scheme is like the rectangle color scheme, but the four colors are evenly spaced on the color wheel.



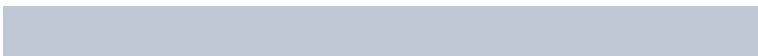
14140103



13486008



11979975



12634326

Rectangle

The Rectangle color scheme consists of four colors that form a rectangle on the color wheel.



14140103



14074811



11979975



11979731

Sweetspot

The Sweet Spot groups the original color and five complimentary colors.



14140103



16775161



13812439



8419964



0



8421504

Same Dimension

The Same Dimension uses a secret algorithm to generate beautiful new colors.



14140103



16769256



14141378



7037027



11206697



2818058

Inverse Universe

The Inverse Universe completely reimagines the original color for something new.



14140103



16769256



12767959



7037027



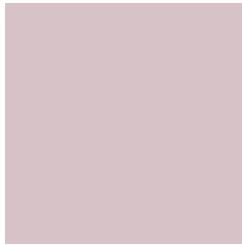
11206697



2818058

Previews

White Background



This preview shows how the Decimal color 14140103 looks on a white background.

Color Contrast Check

Large Text (above 18pt) WCAG AA × Fail

Any Text WCAG AA × Fail

Large Text (above 18pt) WCAG AAA × Fail

Any Text WCAG AAA × Fail

Black Background



This preview shows how the Decimal color 14140103 looks on a black background.

Color Contrast Check

Large Text (above 18pt) WCAG AA ✓ Pass

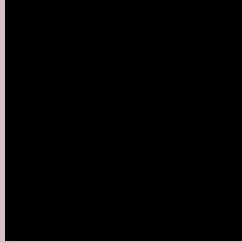
Any Text WCAG AA ✓ Pass

Large Text (above 18pt) WCAG AAA ✓ Pass

Any Text WCAG AAA ✓ Pass

If you want to check with other color combinations, try the [Color Contrast Checker](#).

Decimal 14140103 Background



This preview shows how black text looks on a background with the Decimal color 14140103.

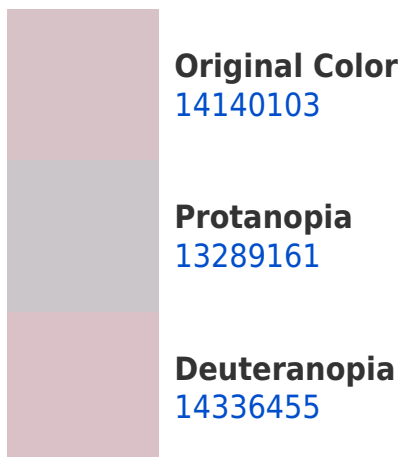



This preview shows how white text looks on a background with the Decimal color 14140103.

Color Blindness Simulation

Color vision deficiency is a very complex topic, and I could not describe the different causes any better than Wikipedia does, so if you want to learn more, you should check out their [article about color blindness](#).

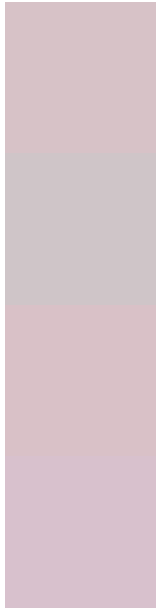
Dichromacy





Tritanopia
14205392

Trichromacy



Original Color
14140103

Protanomaly
13616584

Deuteranomaly
14270919

Tritanomaly
14205389

Monochromacy



Original Color
14140103

Achromatopsia
13224393

Achromatomaly
13551304

CSS Examples

Text

The CSS property to change the color of the text to Decimal 14140103 is called "color". The color property can be set on classes, ids or directly on the HTML element.

This example shows how text in the color #D7C2C7 looks like.

```
.text, #text, p{  
    color:#D7C2C7  
}
```

If you want to add a text shadow in that color use the text-shadow property, you can generate a text shadow directly with our [CSS Text Shadow Generator](#).

Here you see how black text with a 4 pixel #D7C2C7 colored shadow looks like.

```
.shadow{ text-shadow: 4px 4px 2px #D7C2C7
}
```

Border

The CSS property to change the border of an element to Decimal 14140103 is called "border". The border property can be set on classes, ids or directly on the HTML element.

This example shows the color as border, it can be applied via the CSS property "border" or "border-color".

```
.border, #border, table{ border:4px solid
#D7C2C7 }
```

If only the border color should be changed use the property `border-color`.

```
.border{ border-color:#D7C2C7 }
```

If you want to add a box shadow in that color use:

Here you see how a box with a 4 pixel #D7C2C7 colored shadow looks like.

```
.boxshadow{ -moz-box-shadow:4px 4px 4px  
4px #D7C2C7; -webkit-box-shadow:4px 4px  
4px 4px #D7C2C7; box-shadow:4px 4px 4px  
4px #D7C2C7 }
```

Background

The CSS property to change the background color of an element to Decimal 14140103 is called "background". The background property can be set on classes, ids or directly on the HTML element.

```
.background, #background, body{  
background:#D7C2C7 }
```

If only the background color should be changed can be used:

```
.background{ background-color:#D7C2C7 }
```

This example shows the color as background, it is applied via the CSS property "background".

To optimize and compress your CSS code, you can use our [online CSS compressor and optimizer](#) based on csstidy. If you want to create a linear or radial gradient as background or border, check our [CSS Gradient Generator](#).

Hey! You found this booklet interesting? Support Converting Colors with the new Membership Option!

The pro membership hides all ads, plus gives you double the colors in the color bucket, and more awesome pro features!

[Learn more, Memberships starting at \\$2.50/m!](#)

**Follow me
on Twitter!**

@ConvertingColor