

# Converting Colors

Decimal(14140345)

Have a look what the booklet for  
Decimal(14140345) contains.

<b>Decimal(14140345)</b> .....	3
<i><b>Conversions</b></i> .....	4
<i><b>Details</b></i> .....	6
<i><b>Harmonies</b></i> .....	11
<i><b>Previews</b></i> .....	23
<i><b>Color Blindness Simulation</b></i> .....	26
<i><b>CSS Examples</b></i> .....	29

# **Color**

**Decimal(14140345)**

# Conversions

## Conversions Part 1

Format	Color
Hex	D7C3B9
RGB	215, 195, 185
RGB Percent	84%, 76%, 73%
CMY	0.1569, 0.2353, 0.2745
CMYK	0.00, 0.09, 0.14, 0.16
HSL	20°, 27%, 78%
HSV	20°, 14%, 84%
XYZ	56.2964, 56.9801, 53.9301
YIQ	199.8400, 15.1300, 1.1300

# Conversions

## Conversions Part 2

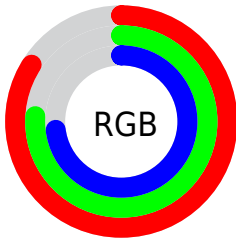
Format	Color
R <sub>Y</sub> B	215, 200, 185
Decimal	14140345
CIE Lab	80.17, 5.39, 7.57
CIE LCh	80, 9.287, 54.556
Yxy	56.9801, 0.3367, 0.3408
Android (android.graphics.Color)	4292330425 (0xFFD7C3B9)
YUV	199.8400, -7.3161, 13.2953
Hunter-Lab	75.4851, 1.0253, 10.4801

# Details

The Decimal color **14140345** is a light color, and the websafe version is hex **CCCCCC**. A complement of this color would be **12176855**, and the grayscale version is **13158600**.

A 20% lighter version of the original color is **16776433**, and **10521988** is the 20% darker color. If you saturate the color by 10%, you get **14136740**, and if you desaturate by 10%, it is **14143951**.

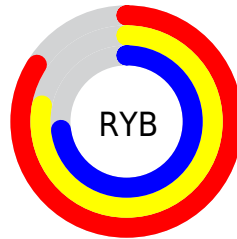
# Distribution



Red (84%)

Green (76%)

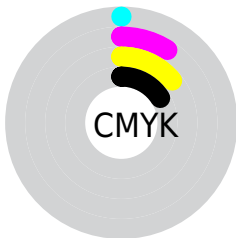
Blue (73%)



Red (84%)

Yellow (78%)

Blue (73%)

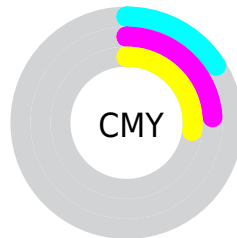


Cyan (0%)

Magenta (9%)

Yellow (14%)

Black (16%)



Cyan (16%)

Magenta (24%)

Yellow (27%)

# Brightness & Saturation Gradients

These gradients show how the Decimal color 14140345 changes by changing the brightness by 10 percent. The first figure shows a shift by +10% for each color and the second figure -10%.

Similar to the brightness gradients but the following saturation gradients show a change of the Decimal color 14140345 by changing the saturation by 10% instead.



 14140345

 14140345

16777215

 12298398

 16776433

 10521988


 8811627

 7101267

 5522492


 3943974

 2496785

 917504

 0

 14140345

 14140345

 14136740

 14143951

 14132878

 14147812

 14129272

 14151418

 14125667

 14155007

 14121806

 14155775

 14118200

 14114594

 14110733

 14108672

# Harmonies

## Analogous

The Analogous color harmony consists of three colors that are next to each other on the color wheel.



14336448



14140345



13682358

# Triad

The Triadic color harmony groups three colors that are evenly spaced from another and form a triangle on the color wheel.



14140345



11914437



13092310

# Complementary

The Complementary color scheme is a pair of colors which are on the opposite of each other on the color wheel.



14140345



12176855

# Split Complementary

Split-complementary colors differ from the complementary color scheme. The scheme consists of three colors, the original color and two neighbors of the complement color.



12372184



14140345



11717838

# Square

The Square scheme is like the rectangle color scheme, but the four colors are evenly spaced on the color wheel.



14140345



12372925



11848405



13747153

# Rectangle

The Rectangle color scheme consists of four colors that form a rectangle on the color wheel.



14140345



13289654



11848405



12830423

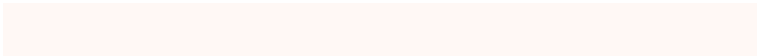


# Sweetspot

The Sweet Spot groups the original color and five complimentary colors.



14140345



16775413



14137805



8420217



0



8421504

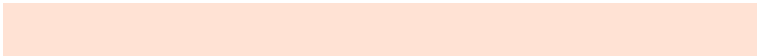


# Same Dimension

The Same Dimension uses a secret algorithm to generate beautiful new colors.



14140345



16769748



14144185



7038048



11221248



2821632

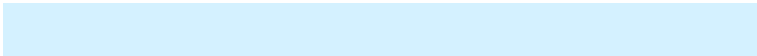


# Inverse Universe

The Inverse Universe completely reimagines the original color for something new.



12176855



13955583



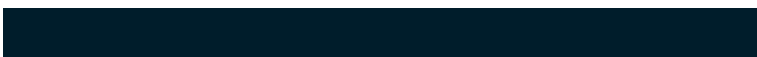
12173271



6318187



29355

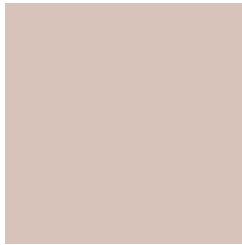


7467



# Previews

## White Background



This preview shows how the Decimal color 14140345 looks on a white background.

## Color Contrast Check

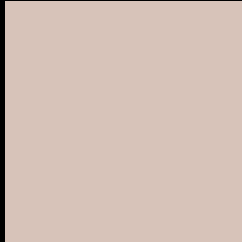
Large Text (above 18pt) WCAG AA × Fail

Any Text WCAG AA × Fail

Large Text (above 18pt) WCAG AAA × Fail

Any Text WCAG AAA × Fail

# Black Background



This preview shows how the Decimal color 14140345 looks on a black background.

## Color Contrast Check

Large Text (above 18pt) WCAG AA ✓ Pass

Any Text WCAG AA ✓ Pass

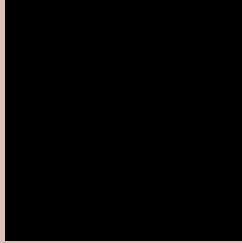
Large Text (above 18pt) WCAG AAA ✓ Pass

Any Text WCAG AAA ✓ Pass

If you want to check with other color combinations, try the [Color Contrast Checker](#).



## Decimal 14140345 Background



This preview shows how black text looks on a background with the Decimal color 14140345.




This preview shows how white text looks on a background with the Decimal color 14140345.

# Color Blindness Simulation

Color vision deficiency is a very complex topic, and I could not describe the different causes any better than Wikipedia does, so if you want to learn more, you should check out their [article about color blindness](#).

## Dichromacy





**Tritanopia**  
14336207

# Trichromacy



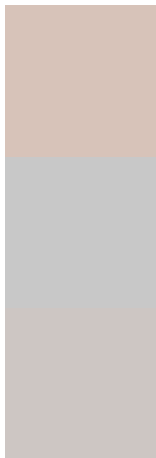
**Original Color**  
14140345

**Protanomaly**  
13747642

**Deuteranomaly**  
14467514

**Tritanomaly**  
14270919

# Monochromacy



**Original Color**  
14140345

**Achromatopsia**  
13158600

**Achromatomaly**  
13485763

# CSS Examples

## Text

The CSS property to change the color of the text to Decimal 14140345 is called "color". The color property can be set on classes, ids or directly on the HTML element.

This example shows how text in the color #D7C3B9 looks like.

```
.text, #text, p{  
    color:#D7C3B9  
}
```

If you want to add a text shadow in that color use the text-shadow property, you can generate a text shadow directly with our [CSS Text Shadow Generator](#).

Here you see how black text with a 4 pixel #D7C3B9 colored shadow looks like.

```
.shadow{ text-shadow: 4px 4px 2px #D7C3B9
}
```

## Border

The CSS property to change the border of an element to Decimal 14140345 is called "border". The border property can be set on classes, ids or directly on the HTML element.

This example shows the color as border, it can be applied via the CSS property "border" or "border-color".

```
.border, #border, table{ border:4px solid
#D7C3B9 }
```

If only the border color should be changed use the property `border-color`.

```
.border{ border-color:#D7C3B9 }
```

If you want to add a box shadow in that color use:

Here you see how a box with a 4 pixel #D7C3B9 colored shadow looks like.

```
.boxshadow{ -moz-box-shadow:4px 4px 4px  
4px #D7C3B9; -webkit-box-shadow:4px 4px  
4px 4px #D7C3B9; box-shadow:4px 4px 4px  
4px #D7C3B9 }
```

# Background

The CSS property to change the background color of an element to Decimal 14140345 is called "background". The background property can be set on classes, ids or directly on the HTML element.

```
.background, #background, body{  
background:#D7C3B9 }
```

If only the background color should be changed can be used:

```
.background{ background-color:#D7C3B9 }
```

This example shows the color as background, it is applied via the CSS property "background".

To optimize and compress your CSS code, you can use our [online CSS compressor and optimizer](#) based on csstidy. If you want to create a linear or radial gradient as background or border, check our [CSS Gradient Generator](#).



Hey! You found this booklet interesting? Support Converting Colors with the new Membership Option!

The pro membership hides all ads, plus gives you double the colors in the color bucket, and more awesome pro features!

**[Learn more, Memberships starting at \\$2.50/m!](#)**

**Follow me  
on Twitter!**

@ConvertingColor