

Converting Colors

Decimal(14193583)

Have a look what the booklet for
Decimal(14193583) contains.

Decimal(14193583)	3
<i>Conversions</i>	4
<i>Details</i>	6
<i>Harmonies</i>	11
<i>Previews</i>	23
<i>Color Blindness Simulation</i>	26
<i>CSS Examples</i>	29

Color

Decimal(14193583)

Conversions

Conversions Part 1

Format	Color
Hex	D893AF
RGB	216, 147, 175
RGB Percent	85%, 58%, 69%
CMY	0.1529, 0.4235, 0.3137
CMYK	0.00, 0.32, 0.19, 0.15
HSL	336°, 47%, 71%
HSV	336°, 32%, 85%
XYZ	46.4905, 38.5615, 45.5502
YIQ	170.8230, 32.1360, 23.3360

Conversions

Conversions Part 2

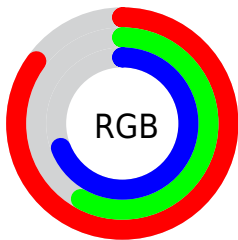
Format	Color
R _Y B	216, 147, 175
Decimal	14193583
CIE Lab	68.43, 30.02, -4.01
CIE LCh	68, 30.287, 352.398
Yxy	38.5615, 0.3560, 0.2953
Android (android.graphics.Color)	4292383663 (0xFFD893AF)
YUV	170.8230, 2.0593, 39.6202
Hunter-Lab	62.0979, 24.9652, -0.0220

Details

The Decimal color **14193583** is a light color, and the websafe version is hex **CC99CC**. A complement of this color would be **9689276**, and the grayscale version is **11250603**.

A 20% lighter version of the original color is **16763622**, and **10510203** is the 20% darker color. If you saturate the color by 10%, you get **14187938**, and if you desaturate by 10%, it is **14199228**.

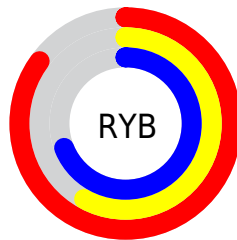
Distribution



Red (85%)

Green (58%)

Blue (69%)



Red (85%)

Yellow (58%)

Blue (69%)

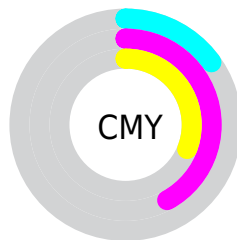


Cyan (0%)

Magenta (32%)

Yellow (19%)

Black (15%)



Cyan (15%)

Magenta (42%)

Yellow (31%)

Brightness & Saturation Gradients

These gradients show how the Decimal color 14193583 changes by changing the brightness by 10 percent. The first figure shows a shift by +10% for each color and the second figure -10%.

Similar to the brightness gradients but the following saturation gradients show a change of the Decimal color 14193583 by changing the saturation by 10% instead.

 14193583

 14193583

16777215

 12351892

 16763622

 10510203

 16770815

 8734562

 7024458

 5314355

 3670046


 2359300

 0

 14193583

 14193583

 14187938

 14199228

 14182549

 14204617

 14176904

 14210262

 14171516

 14215650

 14165871

 14221295

 14160226

 14221308

 14155864

 14221311

Harmonies

Analogous

The Analogous color harmony consists of three colors that are next to each other on the color wheel.



12818889



14193583



14586771

Triad

The Triadic color harmony groups three colors that are evenly spaced from another and form a triangle on the color wheel.



14193583



10857588



5681873

Complementary

The Complementary color scheme is a pair of colors which are on the opposite of each other on the color wheel.



14193583



9689276

Split Complementary

Split-complementary colors differ from the complementary color scheme. The scheme consists of three colors, the original color and two neighbors of the complement color.



5224123



14193583



8761989

Square

The Square scheme is like the rectangle color scheme, but the four colors are evenly spaced on the color wheel.



14193583



12624753



6731423



7908573

Rectangle

The Rectangle color scheme consists of four colors that form a rectangle on the color wheel.



14193583



14260099



6731423



5223627

Sweetspot

The Sweet Spot groups the original color and five complimentary colors.



14193583



16770800



12293080



8417398



0



8421504

Same Dimension

The Same Dimension uses a secret algorithm to generate beautiful new colors.



14193583



16752325



14195091



7037029



11206725



2818066

Inverse Universe

The Inverse Universe completely reimagines the original color for something new.



14193583



16752325



9687768



7037029



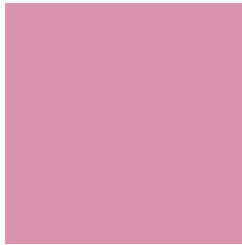
11206725



2818066

Previews

White Background



This preview shows how the Decimal color 14193583 looks on a white background.

Color Contrast Check

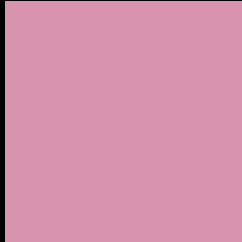
Large Text (above 18pt) WCAG AA × Fail

Any Text WCAG AA × Fail

Large Text (above 18pt) WCAG AAA × Fail

Any Text WCAG AAA × Fail

Black Background



This preview shows how the Decimal color 14193583 looks on a black background.

Color Contrast Check

Large Text (above 18pt) WCAG AA ✓ Pass

Any Text WCAG AA ✓ Pass

Large Text (above 18pt) WCAG AAA ✓ Pass

Any Text WCAG AAA ✓ Pass

If you want to check with other color combinations, try the [Color Contrast Checker](#).

Decimal 14193583 Background



This preview shows how black text looks on a background with the Decimal color 14193583.

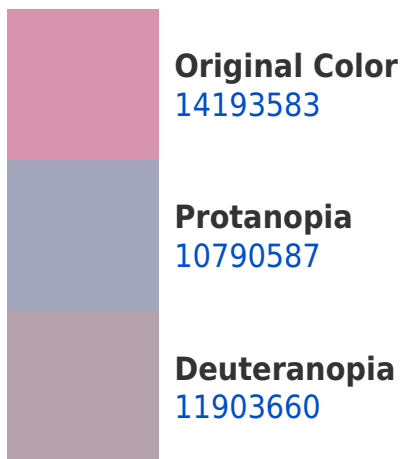



This preview shows how white text looks on a background with the Decimal color 14193583.

Color Blindness Simulation

Color vision deficiency is a very complex topic, and I could not describe the different causes any better than Wikipedia does, so if you want to learn more, you should check out their [article about color blindness](#).

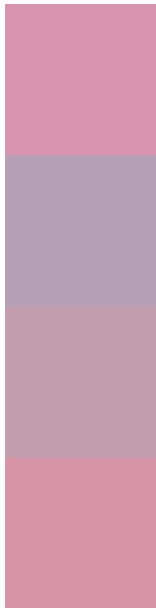
Dichromacy





Tritanopia
14063009

Trichromacy



Original Color
14193583

Protanomaly
12033975

Deuteranomaly
12754349

Tritanomaly
14128294

Monochromacy



Original Color
14193583

Achromatopsia
11250603

Achromatomaly
12296876

CSS Examples

Text

The CSS property to change the color of the text to Decimal 14193583 is called "color". The color property can be set on classes, ids or directly on the HTML element.

This example shows how text in the color #D893AF looks like.

```
.text, #text, p{  
    color:#D893AF  
}
```

If you want to add a text shadow in that color use the text-shadow property, you can generate a text shadow directly with our [CSS Text Shadow Generator](#).

Here you see how black text with a 4 pixel #D893AF colored shadow looks like.

```
.shadow{ text-shadow: 4px 4px 2px #D893AF
}
```

Border

The CSS property to change the border of an element to Decimal 14193583 is called "border". The border property can be set on classes, ids or directly on the HTML element.

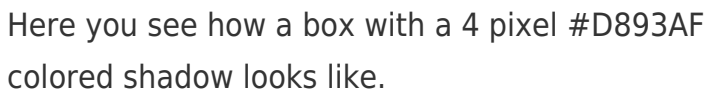
This example shows the color as border, it can be applied via the CSS property "border" or "border-color".

```
.border, #border, table{ border:4px solid
#D893AF }
```

If only the border color should be changed use the property `border-color`.

```
.border{ border-color:#D893AF }
```

If you want to add a box shadow in that color use:



Here you see how a box with a 4 pixel #D893AF colored shadow looks like.

```
.boxshadow{ -moz-box-shadow:4px 4px 4px  
4px #D893AF; -webkit-box-shadow:4px 4px  
4px 4px #D893AF; box-shadow:4px 4px 4px  
4px #D893AF }
```

Background

The CSS property to change the background color of an element to Decimal 14193583 is called "background". The background property can be set on classes, ids or directly on the HTML element.

```
.background, #background, body{  
background:#D893AF }
```

If only the background color should be changed can be used:

```
.background{ background-color:#D893AF }
```

This example shows the color as background, it is applied via the CSS property "background".

To optimize and compress your CSS code, you can use our [online CSS compressor and optimizer](#) based on csstidy. If you want to create a linear or radial gradient as background or border, check our [CSS Gradient Generator](#).

Hey! You found this booklet interesting? Support Converting Colors with the new Membership Option!

The pro membership hides all ads, plus gives you double the colors in the color bucket, and more awesome pro features!

[Learn more, Memberships starting at \\$2.50/m!](#)

**Follow me
on Twitter!**

@ConvertingColor