

# Converting Colors

Decimal(14193835)

Have a look what the booklet for  
Decimal(14193835) contains.

<b>Decimal(14193835)</b> .....	3
<i><b>Conversions</b></i> .....	4
<i><b>Details</b></i> .....	6
<i><b>Harmonies</b></i> .....	11
<i><b>Previews</b></i> .....	23
<i><b>Color Blindness Simulation</b></i> .....	26
<i><b>CSS Examples</b></i> .....	29

# **Color**

**Decimal(14193835)**

# Conversions

## Conversions Part 1

<b>Format</b>	<b>Color</b>
Hex	D894AB
RGB	216, 148, 171
RGB Percent	85%, 58%, 67%
CMY	0.1529, 0.4196, 0.3294
CMYK	0.00, 0.31, 0.21, 0.15
HSL	340°, 47%, 71%
HSV	340°, 31%, 85%
XYZ	46.2595, 38.7190, 43.5635
YIQ	170.9540, 33.1450, 21.5690

# Conversions

## Conversions Part 2

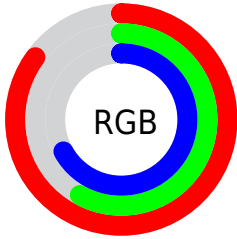
<b>Format</b>	<b>Color</b>
R <sub>Y</sub> B	216, 148, 171
Decimal	14193835
CIE Lab	68.55, 28.87, -1.60
CIE LCh	69, 28.917, 356.825
Yxy	38.7190, 0.3599, 0.3012
Android (android.graphics.Color)	4292383915 (0xFFD894AB)
YUV	170.9540, 0.0227, 39.5053
Hunter-Lab	62.2246, 23.8088, 2.0483

# Details

The Decimal color **14193835** is a light color, and the websafe version is hex **CC9999**. A complement of this color would be **9754817**, and the grayscale version is **11250603**.

A 20% lighter version of the original color is **16763874**, and **10510455** is the 20% darker color. If you saturate the color by 10%, you get **14188189**, and if you desaturate by 10%, it is **14199481**.

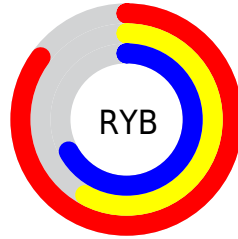
# Distribution



Red (85%)

Green (58%)

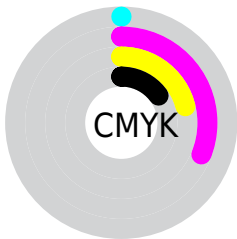
Blue (67%)



Red (85%)

Yellow (58%)

Blue (67%)

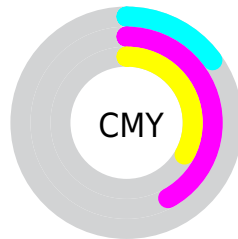


Cyan (0%)

Magenta (31%)

Yellow (21%)

Black (15%)



Cyan (15%)

Magenta (42%)

Yellow (33%)

# Brightness & Saturation Gradients

These gradients show how the Decimal color 14193835 changes by changing the brightness by 10 percent. The first figure shows a shift by +10% for each color and the second figure -10%.

Similar to the brightness gradients but the following saturation gradients show a change of the Decimal color 14193835 by changing the saturation by 10% instead.



 14193835

 14193835

16777215

 12352145

 16763874

 10510455

 16771071

 8734814

 7024711

 5314864

 3670300

 2359297

 0

 14193835

 14193835

 14188189

 14199481

 14182798

 14204872

 14177152

 14210518

 14171762

 14215908

 14166116

 14221298

 14160469

 14221311

 14155849

# Harmonies

## Analogous

The Analogous color harmony consists of three colors that are next to each other on the color wheel.



13015492



14193835



14390673

# Triad

The Triadic color harmony groups three colors that are evenly spaced from another and form a triangle on the color wheel.



14193835



10595704



6271442

# Complementary

The Complementary color scheme is a pair of colors which are on the opposite of each other on the color wheel.



14193835



9754817

# Split Complementary

Split-complementary colors differ from the complementary color scheme. The scheme consists of three colors, the original color and two neighbors of the complement color.



5551550



14193835



8631178

# Square

The Square scheme is like the rectangle color scheme, but the four colors are evenly spaced on the color wheel.



14193835



12363123



6731171



8497883

# Rectangle

The Rectangle color scheme consists of four colors that form a rectangle on the color wheel.



14193835



14064002



6731171



5813196



# Sweetspot

The Sweet Spot groups the original color and five complimentary colors.



14193835



16771312



12621016



8417654



0



8421504



# Same Dimension

The Same Dimension uses a secret algorithm to generate beautiful new colors.



14193835



16752319



14196372



7037028



11206714



2818063



# Inverse Universe

The Inverse Universe completely reimagines the original color for something new.



14193835



16752319



9752280



7037028



11206714



2818063



# Previews

## White Background



This preview shows how the Decimal color 14193835 looks on a white background.

## Color Contrast Check

Large Text (above 18pt) WCAG AA × Fail

Any Text WCAG AA × Fail

Large Text (above 18pt) WCAG AAA × Fail

Any Text WCAG AAA × Fail

# Black Background



This preview shows how the Decimal color 14193835 looks on a black background.

## Color Contrast Check

Large Text (above 18pt) WCAG AA ✓ Pass

Any Text WCAG AA ✓ Pass

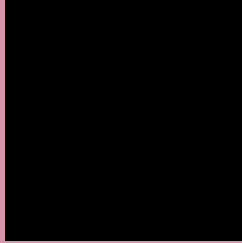
Large Text (above 18pt) WCAG AAA ✓ Pass

Any Text WCAG AAA ✓ Pass

If you want to check with other color combinations, try the [Color Contrast Checker](#).



## Decimal 14193835 Background



This preview shows how black text looks on a background with the Decimal color 14193835.

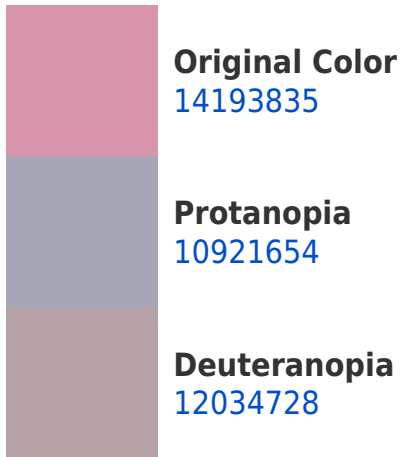



This preview shows how white text looks on a background with the Decimal color 14193835.

# Color Blindness Simulation

Color vision deficiency is a very complex topic, and I could not describe the different causes any better than Wikipedia does, so if you want to learn more, you should check out their [article about color blindness](#).

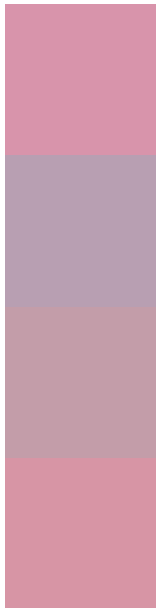
## Dichromacy





**Tritanopia**  
14128801

# Trichromacy



**Original Color**  
14193835

**Protanomaly**  
12099506

**Deuteranomaly**  
12819881

**Tritanomaly**  
14128549

# Monochromacy



**Original Color**  
14193835

**Achromatopsia**  
11250603

**Achromatomaly**  
12297131

# CSS Examples

## Text

The CSS property to change the color of the text to Decimal 14193835 is called "color". The color property can be set on classes, ids or directly on the HTML element.

This example shows how text in the color #D894AB looks like.

```
.text, #text, p{  
    color:#D894AB  
}
```

If you want to add a text shadow in that color use the text-shadow property, you can generate a text shadow directly with our [CSS Text Shadow Generator](#).

Here you see how black text with a 4 pixel #D894AB colored shadow looks like.

```
.shadow{ text-shadow: 4px 4px 2px #D894AB
}
```

## Border

The CSS property to change the border of an element to Decimal 14193835 is called "border". The border property can be set on classes, ids or directly on the HTML element.

This example shows the color as border, it can be applied via the CSS property "border" or "border-color".

```
.border, #border, table{ border:4px solid
#D894AB }
```

If only the border color should be changed use the property `border-color`.

```
.border{ border-color:#D894AB }
```

If you want to add a box shadow in that color use:

Here you see how a box with a 4 pixel #D894AB colored shadow looks like.

```
.boxshadow{ -moz-box-shadow:4px 4px 4px  
4px #D894AB; -webkit-box-shadow:4px 4px  
4px 4px #D894AB; box-shadow:4px 4px 4px  
4px #D894AB }
```

# Background

The CSS property to change the background color of an element to Decimal 14193835 is called "background". The background property can be set on classes, ids or directly on the HTML element.

```
.background, #background, body{  
background:#D894AB }
```

If only the background color should be changed can be used:

```
.background{ background-color:#D894AB }
```

This example shows the color as background, it is applied via the CSS property "background".

To optimize and compress your CSS code, you can use our [online CSS compressor and optimizer](#) based on csstidy. If you want to create a linear or radial gradient as background or border, check our [CSS Gradient Generator](#).



Hey! You found this booklet interesting? Support Converting Colors with the new Membership Option!

The pro membership hides all ads, plus gives you double the colors in the color bucket, and more awesome pro features!

**[Learn more, Memberships starting at \\$2.50/m!](#)**

**Follow me  
on Twitter!**

@ConvertingColor