

Converting Colors

Decimal(14196350)

Have a look what the booklet for
Decimal(14196350) contains.

Decimal(14196350)	3
<i>Conversions</i>	4
<i>Details</i>	6
<i>Harmonies</i>	11
<i>Previews</i>	23
<i>Color Blindness Simulation</i>	26
<i>CSS Examples</i>	29

Color

Decimal(14196350)

Conversions

Conversions Part 1

Format	Color
Hex	D89E7E
RGB	216, 158, 126
RGB Percent	85%, 62%, 49%
CMY	0.1529, 0.3804, 0.5059
CMYK	0.00, 0.27, 0.42, 0.15
HSL	21°, 54%, 67%
HSV	21°, 42%, 85%
XYZ	44.3117, 40.5590, 25.2319
YIQ	171.6940, 44.8400, 2.3440

Conversions

Conversions Part 2

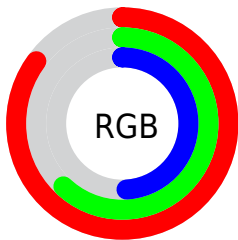
Format	Color
R _Y B	216, 176, 126
Decimal	14196350
CIE Lab	69.87, 17.59, 25.20
CIE LCh	70, 30.731, 55.084
Yxy	40.5590, 0.4025, 0.3684
Android (android.graphics.Color)	4292386430 (0xFFD89E7E)
YUV	171.6940, -22.5271, 38.8564
Hunter-Lab	63.6860, 12.7470, 21.0900

Details

The Decimal color **14196350** is a light color, and the websafe version is hex **CC9966**. A complement of this color would be **8304856**, and the grayscale version is **11316396**.

A 20% lighter version of the original color is **16766387**, and **10447437** is the 20% darker color. If you saturate the color by 10%, you get **14192744**, and if you desaturate by 10%, it is **14199956**.

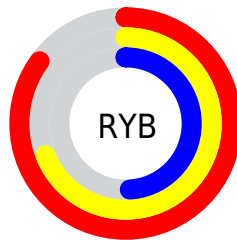
Distribution



Red (85%)

Green (62%)

Blue (49%)



Red (85%)

Yellow (69%)

Blue (49%)

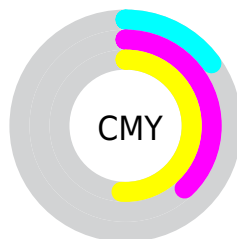


Cyan (0%)

Magenta (27%)

Yellow (42%)

Black (15%)



Cyan (15%)

Magenta (38%)

Yellow (51%)

Brightness & Saturation Gradients

These gradients show how the Decimal color 14196350 changes by changing the brightness by 10 percent. The first figure shows a shift by +10% for each color and the second figure -10%.

Similar to the brightness gradients but the following saturation gradients show a change of the Decimal color 14196350 by changing the saturation by 10% instead.

 14196350

 14196350

16777215

 12289125

 16766387

 10447437

 16773582

 8671798

 16777195

 6896416

 5186825

 3477248

 2031617

 0

 14196350

 14196350

■ 14192744

■ 14199956

■ 14189139

■ 14203561

■ 14185533

■ 14207167

■ 14181928

■ 14210772

■ 14178322

■ 14214378

■ 14175488

■ 14217983

■ 14221311

Harmonies

Analogous

The Analogous color harmony consists of three colors that are next to each other on the color wheel.



14849940



14196350



12822387

Triad

The Triadic color harmony groups three colors that are evenly spaced from another and form a triangle on the color wheel.



14196350



6732453



11052509

Complementary

The Complementary color scheme is a pair of colors which are on the opposite of each other on the color wheel.



14196350



8304856

Split Complementary

Split-complementary colors differ from the complementary color scheme. The scheme consists of three colors, the original color and two neighbors of the complement color.



8368098



14196350



5290689

Square

The Square scheme is like the rectangle color scheme, but the four colors are evenly spaced on the color wheel.



14196350



8828810



5945048



13278411

Rectangle

The Rectangle color scheme consists of four colors that form a rectangle on the color wheel.



14196350



11578740



5945048



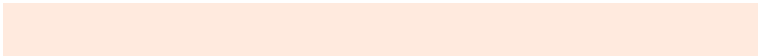
10201568

Sweetspot

The Sweet Spot groups the original color and five complimentary colors.



14196350



16771806



14188216



8417899



0



8421504

Same Dimension

The Same Dimension uses a secret algorithm to generate beautiful new colors.



14196350



16756096



14207870



7038048



11222272



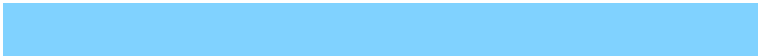
2821888

Inverse Universe

The Inverse Universe completely reimagines the original color for something new.



8304856



8442623



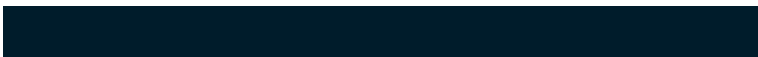
8293336



6317931



28331



7211

Previews

White Background



This preview shows how the Decimal color 14196350 looks on a white background.

Color Contrast Check

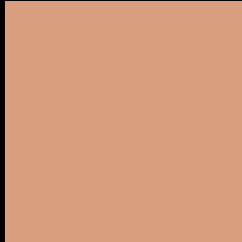
Large Text (above 18pt) WCAG AA × Fail

Any Text WCAG AA × Fail

Large Text (above 18pt) WCAG AAA × Fail

Any Text WCAG AAA × Fail

Black Background



This preview shows how the Decimal color 14196350 looks on a black background.

Color Contrast Check

Large Text (above 18pt) WCAG AA ✓ Pass

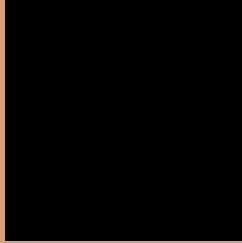
Any Text WCAG AA ✓ Pass

Large Text (above 18pt) WCAG AAA ✓ Pass

Any Text WCAG AAA ✓ Pass

If you want to check with other color combinations, try the [Color Contrast Checker](#).

Decimal 14196350 Background



This preview shows how black text looks on a background with the Decimal color 14196350.



This preview shows how white text looks on a background with the Decimal color 14196350.

Color Blindness Simulation

Color vision deficiency is a very complex topic, and I could not describe the different causes any better than Wikipedia does, so if you want to learn more, you should check out their [article about color blindness](#).


Dichromacy



Original Color
14196350

Protanopia
12036996

Deuteranopia
13345917



Tritanopia
14457252

Trichromacy



Original Color
14196350

Protanomaly
12822146

Deuteranomaly
13673085

Tritanomaly
14392214

Monochromacy



Original Color
14196350

Achromatopsia
11316396

Achromatomaly
12363675

CSS Examples

Text

The CSS property to change the color of the text to Decimal 14196350 is called "color". The color property can be set on classes, ids or directly on the HTML element.

This example shows how text in the color #D89E7E looks like.

```
.text, #text, p{  
    color:#D89E7E  
}
```

If you want to add a text shadow in that color use the text-shadow property, you can generate a text shadow directly with our [CSS Text Shadow Generator](#).

Here you see how black text with a 4 pixel #D89E7E colored shadow looks like.

```
.shadow{ text-shadow: 4px 4px 2px #D89E7E
}
```

Border

The CSS property to change the border of an element to Decimal 14196350 is called "border". The border property can be set on classes, ids or directly on the HTML element.

This example shows the color as border, it can be applied via the CSS property "border" or "border-color".

```
.border, #border, table{ border:4px solid
#D89E7E }
```

If only the border color should be changed use the property `border-color`.

```
.border{ border-color:#D89E7E }
```

If you want to add a box shadow in that color use:

Here you see how a box with a 4 pixel #D89E7E colored shadow looks like.

```
.boxshadow{ -moz-box-shadow:4px 4px 4px  
4px #D89E7E; -webkit-box-shadow:4px 4px  
4px 4px #D89E7E; box-shadow:4px 4px 4px  
4px #D89E7E }
```

Background

The CSS property to change the background color of an element to Decimal 14196350 is called "background". The background property can be set on classes, ids or directly on the HTML element.

```
.background, #background, body{  
background:#D89E7E }
```

If only the background color should be changed can be used:

```
.background{ background-color:#D89E7E }
```

This example shows the color as background, it is applied via the CSS property "background".

To optimize and compress your CSS code, you can use our [online CSS compressor and optimizer](#) based on csstidy. If you want to create a linear or radial gradient as background or border, check our [CSS Gradient Generator](#).

Hey! You found this booklet interesting? Support Converting Colors with the new Membership Option!

The pro membership hides all ads, plus gives you double the colors in the color bucket, and more awesome pro features!

[Learn more, Memberships starting at \\$2.50/m!](#)

**Follow me
on Twitter!**

@ConvertingColor