

Converting Colors

Decimal(14198193)

Have a look what the booklet for
Decimal(14198193) contains.

Decimal(14198193)	3
<i>Conversions</i>	4
<i>Details</i>	6
<i>Harmonies</i>	11
<i>Previews</i>	23
<i>Color Blindness Simulation</i>	26
<i>CSS Examples</i>	29

Color

Decimal(14198193)

Conversions

Conversions Part 1

Format	Color
Hex	D8A5B1
RGB	216, 165, 177
RGB Percent	85%, 65%, 69%
CMY	0.1529, 0.3529, 0.3059
CMYK	0.00, 0.24, 0.18, 0.15
HSL	346°, 40%, 75%
HSV	346°, 24%, 85%
XYZ	49.7098, 44.6835, 47.5998
YIQ	181.6170, 26.5440, 14.5440

Conversions

Conversions Part 2

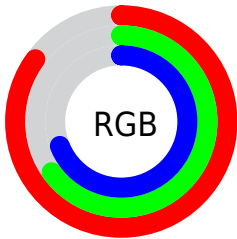
Format	Color
R _Y B	216, 165, 177
Decimal	14198193
CIE Lab	72.68, 20.59, 1.11
CIE LCh	73, 20.621, 3.089
Yxy	44.6835, 0.3501, 0.3147
Android (android.graphics.Color)	4292388273 (0xFFD8A5B1)
YUV	181.6170, -2.2762, 30.1539
Hunter-Lab	66.8457, 15.7615, 4.5726

Details

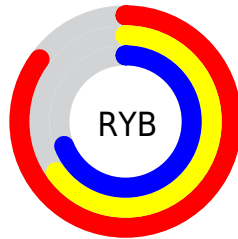
The Decimal color **14198193** is a light color, and the websafe version is hex **CC9999**. A complement of this color would be **10868940**, and the grayscale version is **11974326**.

A 20% lighter version of the original color is **16768233**, and **10514813** is the 20% darker color. If you saturate the color by 10%, you get **14192544**, and if you desaturate by 10%, it is **14203842**.

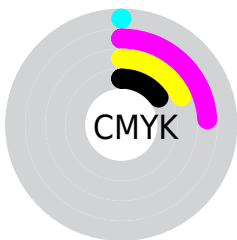
Distribution



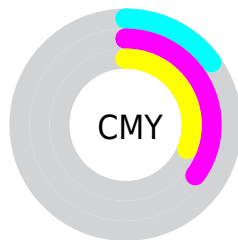
- Red (85%)
- Green (65%)
- Blue (69%)



- Red (85%)
- Yellow (65%)
- Blue (69%)



- Cyan (0%)
- Magenta (24%)
- Yellow (18%)
- Black (15%)



- Cyan (15%)
- Magenta (35%)
- Yellow (31%)

Brightness & Saturation Gradients

These gradients show how the Decimal color 14198193 changes by changing the brightness by 10 percent. The first figure shows a shift by +10% for each color and the second figure -10%.

Similar to the brightness gradients but the following saturation gradients show a change of the Decimal color 14198193 by changing the saturation by 10% instead.

 14198193

 14198193


16777215

 12356502

 16768233


 10514813

 16775679

 8804452

 7094348

 5450293

 3806240

 2490376

 0

 14198193

 14198193

 14192544

 14203842

 14187152

 14209234

 14181503

 14214883

 14176111

 14220275

 14170462

 14221311

 14164814

 14159421

 14155827

Harmonies

Analogous

The Analogous color harmony consists of three colors that are next to each other on the color wheel.



13477828



14198193



14264223

Triad

The Triadic color harmony groups three colors that are evenly spaced from another and form a triangle on the color wheel.



14198193



11188114



9026003

Complementary

The Complementary color scheme is a pair of colors which are on the opposite of each other on the color wheel.



14198193



10868940

Split Complementary

Split-complementary colors differ from the complementary color scheme. The scheme consists of three colors, the original color and two neighbors of the complement color.



8371398



14198193



9813153

Square

The Square scheme is like the rectangle color scheme, but the four colors are evenly spaced on the color wheel.



14198193



12563085



8699316



10466264

Rectangle

The Rectangle color scheme consists of four colors that form a rectangle on the color wheel.



14198193



13937301



8699316



8698576

Sweetspot

The Sweet Spot groups the original color and five complimentary colors.



14198193



16772593



13346264



8418680



0



8421504

Same Dimension

The Same Dimension uses a secret algorithm to generate beautiful new colors.



14198193



16758984



14201509



7037027



11206696



2818058

Inverse Universe

The Inverse Universe completely reimagines the original color for something new.



14198193



16758984



10865624



7037027



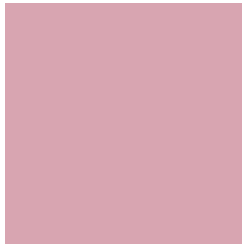
11206696



2818058

Previews

White Background



This preview shows how the Decimal color 14198193 looks on a white background.

Color Contrast Check

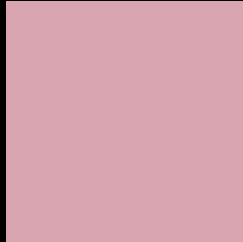
Large Text (above 18pt) WCAG AA × Fail

Any Text WCAG AA × Fail

Large Text (above 18pt) WCAG AAA × Fail

Any Text WCAG AAA × Fail

Black Background



This preview shows how the Decimal color 14198193 looks on a black background.

Color Contrast Check

Large Text (above 18pt) WCAG AA ✓ Pass

Any Text WCAG AA ✓ Pass

Large Text (above 18pt) WCAG AAA ✓ Pass

Any Text WCAG AAA ✓ Pass

If you want to check with other color combinations, try the [Color Contrast Checker](#).

Decimal 14198193 Background



This preview shows how black text looks on a background with the Decimal color 14198193.



This preview shows how white text looks on a background with the Decimal color 14198193.

Color Blindness Simulation

Color vision deficiency is a very complex topic, and I could not describe the different causes any better than Wikipedia does, so if you want to learn more, you should check out their [article about color blindness](#).


Dichromacy



Original Color
14198193

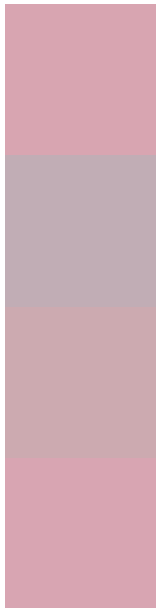
Protanopia
11842232

Deuteranopia
12955056



Tritanopia
14198194

Trichromacy



Original Color
14198193

Protanomaly
12692917

Deuteranomaly
13413040

Tritanomaly
14198194

Monochromacy



Original Color
14198193

Achromatopsia
11974326

Achromatomaly
12759220

CSS Examples

Text

The CSS property to change the color of the text to Decimal 14198193 is called "color". The color property can be set on classes, ids or directly on the HTML element.

This example shows how text in the color #D8A5B1 looks like.

```
.text, #text, p{  
  color:#D8A5B1  
}
```

If you want to add a text shadow in that color use the text-shadow property, you can generate a text shadow directly with our [CSS Text Shadow Generator](#).

Here you see how black text with a 4 pixel #D8A5B1 colored shadow looks like.

```
.shadow{ text-shadow: 4px 4px 2px #D8A5B1
}
```

Border

The CSS property to change the border of an element to Decimal 14198193 is called "border". The border property can be set on classes, ids or directly on the HTML element.

This example shows the color as border, it can be applied via the CSS property "border" or "border-color".

```
.border, #border, table{ border:4px solid
#D8A5B1 }
```

If only the border color should be changed use the property `border-color`.

```
.border{ border-color:#D8A5B1 }
```

If you want to add a box shadow in that color use:

Here you see how a box with a 4 pixel #D8A5B1 colored shadow looks like.

```
.boxshadow{ -moz-box-shadow:4px 4px 4px  
4px #D8A5B1; -webkit-box-shadow:4px 4px  
4px 4px #D8A5B1; box-shadow:4px 4px 4px  
4px #D8A5B1 }
```

Background

The CSS property to change the background color of an element to Decimal 14198193 is called "background". The background property can be set on classes, ids or directly on the HTML element.

```
.background, #background, body{  
background:#D8A5B1 }
```

If only the background color should be changed can be used:

```
.background{ background-color:#D8A5B1 }
```

This example shows the color as background, it is applied via the CSS property "background".

To optimize and compress your CSS code, you can use our [online CSS compressor and optimizer](#) based on csstidy. If you want to create a linear or radial gradient as background or border, check our [CSS Gradient Generator](#).

Hey! You found this booklet interesting? Support Converting Colors with the new Membership Option!

The pro membership hides all ads, plus gives you double the colors in the color bucket, and more awesome pro features!

[Learn more, Memberships starting at \\$2.50/m!](#)

**Follow me
on Twitter!**

@ConvertingColor