

Converting Colors

Decimal(14198401)

Have a look what the booklet for
Decimal(14198401) contains.

Decimal(14198401)	3
<i>Conversions</i>	4
<i>Details</i>	6
<i>Harmonies</i>	11
<i>Previews</i>	23
<i>Color Blindness Simulation</i>	26
<i>CSS Examples</i>	29

Color

Decimal(14198401)

Conversions

Conversions Part 1

Format	Color
Hex	D8A681
RGB	216, 166, 129
RGB Percent	85%, 65%, 51%
CMY	0.1529, 0.3490, 0.4941
CMYK	0.00, 0.23, 0.40, 0.15
HSL	26°, 53%, 68%
HSV	26°, 40%, 85%
XYZ	45.9176, 43.4563, 26.7367
YIQ	176.7320, 41.6770, -0.9070

Conversions

Conversions Part 2

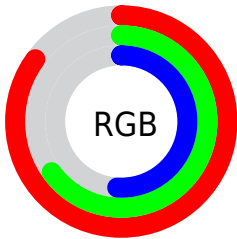
Format	Color
R _Y B	216, 193, 129
Decimal	14198401
CIE Lab	71.86, 13.61, 26.25
CIE LCh	72, 29.565, 62.599
Yxy	43.4563, 0.3955, 0.3743
Android (android.graphics.Color)	4292388481 (0xFFD8A681)
YUV	176.7320, -23.5319, 34.4380
Hunter-Lab	65.9214, 8.9717, 22.0979

Details

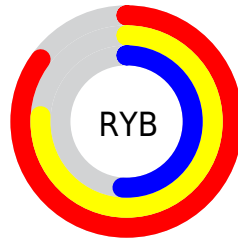
The Decimal color **14198401** is a light color, and the websafe version is hex **CC9966**. A complement of this color would be **8500184**, and the grayscale version is **11645361**.

A 20% lighter version of the original color is **16768438**, and **10449487** is the 20% darker color. If you saturate the color by 10%, you get **14195307**, and if you desaturate by 10%, it is **14201495**.

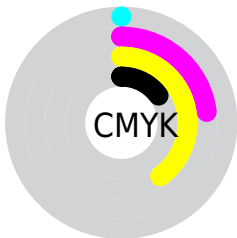
Distribution



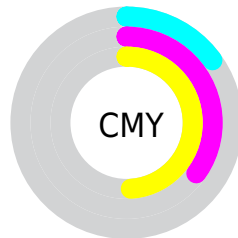
- Red (85%)
- Green (65%)
- Blue (51%)



- Red (85%)
- Yellow (76%)
- Blue (51%)



- Cyan (0%)
- Magenta (23%)
- Yellow (40%)
- Black (15%)



- Cyan (15%)
- Magenta (35%)
- Yellow (49%)

Brightness & Saturation Gradients

These gradients show how the Decimal color 14198401 changes by changing the brightness by 10 percent. The first figure shows a shift by +10% for each color and the second figure -10%.

Similar to the brightness gradients but the following saturation gradients show a change of the Decimal color 14198401 by changing the saturation by 10% instead.

 14198401

 14198401

16777215

 12291176

 16768438

 10449487

 16775890

 8673592

 16777198

 6898210

 5188620

 3610368

 2031616

 0

 14198401

 14198401

14195307

14201495

14191958

14204844

14188864

14207938

14185515

14211287

14182421

14214381

14179328

14217471

14220799

14221311

Harmonies

Analogous

The Analogous color harmony consists of three colors that are next to each other on the color wheel.



15048596



14198401



12693370

Triad

The Triadic color harmony groups three colors that are evenly spaced from another and form a triangle on the color wheel.



14198401



6864818



12036318

Complementary

The Complementary color scheme is a pair of colors which are on the opposite of each other on the color wheel.



14198401



8500184

Split Complementary

Split-complementary colors differ from the complementary color scheme. The scheme consists of three colors, the original color and two neighbors of the complement color.



9548518



14198401



6012620

Square

The Square scheme is like the rectangle color scheme, but the four colors are evenly spaced on the color wheel.



14198401



8764822



7125727



1400329

Rectangle

The Rectangle color scheme consists of four colors that form a rectangle on the color wheel.



14198401



11449726



7125727



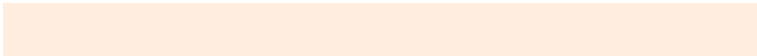
11250914

Sweetspot

The Sweet Spot groups the original color and five complimentary colors.



14198401



16772576



14188980



8418670



0



8421504

Same Dimension

The Same Dimension uses a secret algorithm to generate beautiful new colors.



14198401



16759173



14209409



7038304



11225344



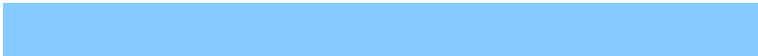
2822656

Inverse Universe

The Inverse Universe completely reimagines the original color for something new.



8500184



8768511



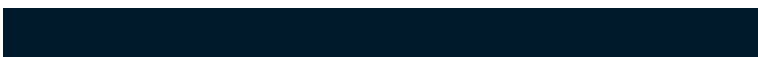
8489176



6317931



25259



6443

Previews

White Background



This preview shows how the Decimal color 14198401 looks on a white background.

Color Contrast Check

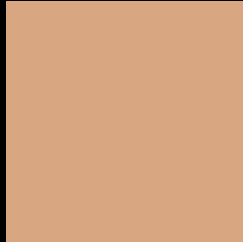
Large Text (above 18pt) WCAG AA × Fail

Any Text WCAG AA × Fail

Large Text (above 18pt) WCAG AAA × Fail

Any Text WCAG AAA × Fail

Black Background



This preview shows how the Decimal color 14198401 looks on a black background.

Color Contrast Check

Large Text (above 18pt) WCAG AA ✓ Pass

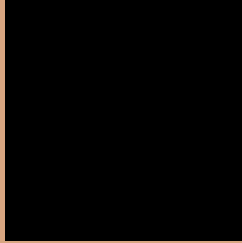
Any Text WCAG AA ✓ Pass

Large Text (above 18pt) WCAG AAA ✓ Pass

Any Text WCAG AAA ✓ Pass

If you want to check with other color combinations, try the [Color Contrast Checker](#).

Decimal 14198401 Background



This preview shows how black text looks on a background with the Decimal color 14198401.



This preview shows how white text looks on a background with the Decimal color 14198401.

Color Blindness Simulation

Color vision deficiency is a very complex topic, and I could not describe the different causes any better than Wikipedia does, so if you want to learn more, you should check out their [article about color blindness](#).

Dichromacy



Original Color
14198401

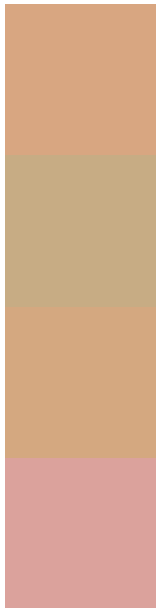
Protanopia
12431493

Deuteranopia
13740416



Tritanopia
14459052

Trichromacy



Original Color
14198401

Protanomaly
13085828

Deuteranomaly
13936768

Tritanomaly
14394012

Monochromacy



Original Color
14198401

Achromatopsia
11645361

Achromatomaly
12561824

CSS Examples

Text

The CSS property to change the color of the text to Decimal 14198401 is called "color". The color property can be set on classes, ids or directly on the HTML element.

This example shows how text in the color #D8A681 looks like.

```
.text, #text, p{  
    color:#D8A681  
}
```

If you want to add a text shadow in that color use the text-shadow property, you can generate a text shadow directly with our [CSS Text Shadow Generator](#).

Here you see how black text with a 4 pixel #D8A681 colored shadow looks like.

```
.shadow{ text-shadow: 4px 4px 2px #D8A681
}
```

Border

The CSS property to change the border of an element to Decimal 14198401 is called "border". The border property can be set on classes, ids or directly on the HTML element.

This example shows the color as border, it can be applied via the CSS property "border" or "border-color".

```
.border, #border, table{ border:4px solid
#D8A681 }
```

If only the border color should be changed use the property `border-color`.

```
.border{ border-color:#D8A681 }
```

If you want to add a box shadow in that color use:

Here you see how a box with a 4 pixel #D8A681 colored shadow looks like.

```
.boxshadow{ -moz-box-shadow:4px 4px 4px  
4px #D8A681; -webkit-box-shadow:4px 4px  
4px 4px #D8A681; box-shadow:4px 4px 4px  
4px #D8A681 }
```

Background

The CSS property to change the background color of an element to Decimal 14198401 is called "background". The background property can be set on classes, ids or directly on the HTML element.

```
.background, #background, body{  
background:#D8A681 }
```

If only the background color should be changed can be used:

```
.background{ background-color:#D8A681 }
```

This example shows the color as background, it is applied via the CSS property "background".

To optimize and compress your CSS code, you can use our [online CSS compressor and optimizer](#) based on csstidy. If you want to create a linear or radial gradient as background or border, check our [CSS Gradient Generator](#).

Hey! You found this booklet interesting? Support Converting Colors with the new Membership Option!

The pro membership hides all ads, plus gives you double the colors in the color bucket, and more awesome pro features!

[Learn more, Memberships starting at \\$2.50/m!](#)

**Follow me
on Twitter!**

@ConvertingColor