

Converting Colors

Decimal(14198940)

Have a look what the booklet for
Decimal(14198940) contains.

Decimal(14198940)	3
<i>Conversions</i>	4
<i>Details</i>	6
<i>Harmonies</i>	11
<i>Previews</i>	23
<i>Color Blindness Simulation</i>	26
<i>CSS Examples</i>	29

Color

Decimal(14198940)

Conversions

Conversions Part 1

Format	Color
Hex	D8A89C
RGB	216, 168, 156
RGB Percent	85%, 66%, 61%
CMY	0.1529, 0.3412, 0.3882
CMYK	0.00, 0.22, 0.28, 0.15
HSL	12°, 43%, 73%
HSV	12°, 28%, 85%
XYZ	48.3223, 45.0045, 37.5924
YIQ	180.9840, 32.4600, 6.4440

Conversions

Conversions Part 2

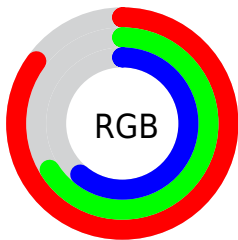
Format	Color
R _Y B	216, 171, 156
Decimal	14198940
CIE Lab	72.89, 15.89, 12.96
CIE LCh	73, 20.509, 39.196
Yxy	45.0045, 0.3691, 0.3438
Android (android.graphics.Color)	4292389020 (0xFFD8A89C)
YUV	180.9840, -12.3171, 30.7090
Hunter-Lab	67.0854, 11.1759, 13.7357

Details

The Decimal color **14198940** is a light color, and the websafe version is hex **CC9999**. A complement of this color would be **10276056**, and the grayscale version is **11908533**.

A 20% lighter version of the original color is **16768978**, and **10515561** is the 20% darker color. If you saturate the color by 10%, you get **14194566**, and if you desaturate by 10%, it is **14203314**.

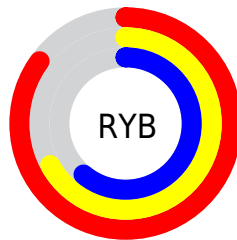
Distribution



Red (85%)

Green (66%)

Blue (61%)



Red (85%)

Yellow (67%)

Blue (61%)

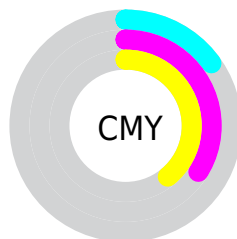


Cyan (0%)

Magenta (22%)

Yellow (28%)

Black (15%)



Cyan (15%)

Magenta (34%)

Yellow (39%)

Brightness & Saturation Gradients

These gradients show how the Decimal color 14198940 changes by changing the brightness by 10 percent. The first figure shows a shift by +10% for each color and the second figure -10%.

Similar to the brightness gradients but the following saturation gradients show a change of the Decimal color 14198940 by changing the saturation by 10% instead.

 14198940

 14198940

16777215

 12356994

 16768978

 10515561

 16776431

 8739665

 7029562

 5385508

 3741711

 2359296

 0

 14198940

 14198940

 14194566

 14203314

 14189937

 14207943

 14185563

 14212317

 14181190

 14216690

 14176816

 14221055

 14172186

 14221311

 14167813

 14166784

Harmonies

Analogous

The Analogous color harmony consists of three colors that are next to each other on the color wheel.



14263982



14198940



13479312

Triad

The Triadic color harmony groups three colors that are evenly spaced from another and form a triangle on the color wheel.



14198940



9616805



10859480

Complementary

The Complementary color scheme is a pair of colors which are on the opposite of each other on the color wheel.



14198940



10276056

Split Complementary

Split-complementary colors differ from the complementary color scheme. The scheme consists of three colors, the original color and two neighbors of the complement color.



9353429



14198940



8634040

Square

The Square scheme is like the rectangle color scheme, but the four colors are evenly spaced on the color wheel.



14198940



10926485



8436938



12430544

Rectangle

The Rectangle color scheme consists of four colors that form a rectangle on the color wheel.



14198940



12759438



8436938



10335704

Sweetspot

The Sweet Spot groups the original color and five complimentary colors.



14198940



16773099



14195916



8418675



0



8421504

Same Dimension

The Same Dimension uses a secret algorithm to generate beautiful new colors.



14198940



16759979



14206364



7037792



11215360



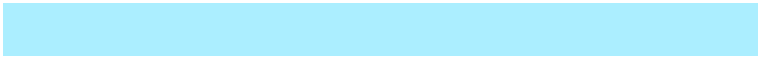
2820352

Inverse Universe

The Inverse Universe completely reimagines the original color for something new.



10276056



11267839



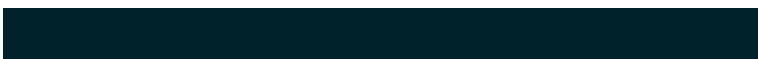
10268376



6318443



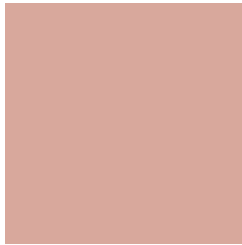
35243



9003

Previews

White Background



This preview shows how the Decimal color 14198940 looks on a white background.

Color Contrast Check

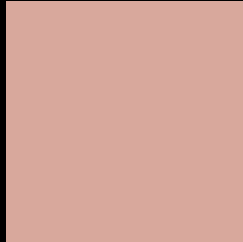
Large Text (above 18pt) WCAG AA × Fail

Any Text WCAG AA × Fail

Large Text (above 18pt) WCAG AAA × Fail

Any Text WCAG AAA × Fail

Black Background



This preview shows how the Decimal color 14198940 looks on a black background.

Color Contrast Check

Large Text (above 18pt) WCAG AA ✓ Pass

Any Text WCAG AA ✓ Pass

Large Text (above 18pt) WCAG AAA ✓ Pass

Any Text WCAG AAA ✓ Pass

If you want to check with other color combinations, try the [Color Contrast Checker](#).

Decimal 14198940 Background



This preview shows how black text looks on a background with the Decimal color 14198940.




This preview shows how white text looks on a background with the Decimal color 14198940.

Color Blindness Simulation

Color vision deficiency is a very complex topic, and I could not describe the different causes any better than Wikipedia does, so if you want to learn more, you should check out their [article about color blindness](#).

Dichromacy





Tritanopia
14329266

Trichromacy



Original Color
14198940

Protanomaly
13021087

Deuteranomaly
13740955

Tritanomaly
14263978

Monochromacy



Original Color
14198940

Achromatopsia
11908533

Achromatomaly
12759212

CSS Examples

Text

The CSS property to change the color of the text to Decimal 14198940 is called "color". The color property can be set on classes, ids or directly on the HTML element.

This example shows how text in the color #D8A89C looks like.

```
.text, #text, p{  
    color:#D8A89C  
}
```

If you want to add a text shadow in that color use the text-shadow property, you can generate a text shadow directly with our [CSS Text Shadow Generator](#).

Here you see how black text with a 4 pixel #D8A89C colored shadow looks like.

```
.shadow{ text-shadow: 4px 4px 2px #D8A89C
}
```

Border

The CSS property to change the border of an element to Decimal 14198940 is called "border". The border property can be set on classes, ids or directly on the HTML element.

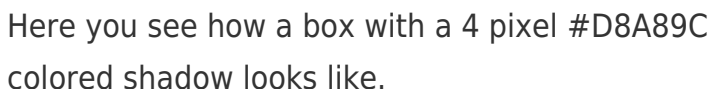
This example shows the color as border, it can be applied via the CSS property "border" or "border-color".

```
.border, #border, table{ border:4px solid
#D8A89C }
```

If only the border color should be changed use the property `border-color`.

```
.border{ border-color:#D8A89C }
```

If you want to add a box shadow in that color use:

A rectangular box with a 4px #D8A89C colored shadow. The box is white with a thin border and a shadow that is 4 pixels wide and 4 pixels high, colored #D8A89C. The shadow is visible on the right and bottom edges of the box.

Here you see how a box with a 4 pixel #D8A89C colored shadow looks like.

```
.boxshadow{ -moz-box-shadow:4px 4px 4px  
4px #D8A89C; -webkit-box-shadow:4px 4px  
4px 4px #D8A89C; box-shadow:4px 4px 4px  
4px #D8A89C }
```

Background

The CSS property to change the background color of an element to Decimal 14198940 is called "background". The background property can be set on classes, ids or directly on the HTML element.

```
.background, #background, body{  
background:#D8A89C }
```

If only the background color should be changed can be used:

```
.background{ background-color:#D8A89C }
```

This example shows the color as background, it is applied via the CSS property "background".

To optimize and compress your CSS code, you can use our [online CSS compressor and optimizer](#) based on csstidy. If you want to create a linear or radial gradient as background or border, check our [CSS Gradient Generator](#).

Hey! You found this booklet interesting? Support Converting Colors with the new Membership Option!

The pro membership hides all ads, plus gives you double the colors in the color bucket, and more awesome pro features!

[Learn more, Memberships starting at \\$2.50/m!](#)

**Follow me
on Twitter!**

@ConvertingColor