

# Converting Colors

Decimal(14199737)

Have a look what the booklet for  
Decimal(14199737) contains.

<b>Decimal(14199737)</b> .....	3
<i><b>Conversions</b></i> .....	4
<i><b>Details</b></i> .....	6
<i><b>Harmonies</b></i> .....	11
<i><b>Previews</b></i> .....	23
<i><b>Color Blindness Simulation</b></i> .....	26
<i><b>CSS Examples</b></i> .....	29

# **Color**

**Decimal(14199737)**

# Conversions

## Conversions Part 1

Format	Color
Hex	D8ABB9
RGB	216, 171, 185
RGB Percent	85%, 67%, 73%
CMY	0.1529, 0.3294, 0.2745
CMYK	0.00, 0.21, 0.14, 0.15
HSL	341°, 37%, 76%
HSV	341°, 21%, 85%
XYZ	51.6388, 47.2275, 52.2931
YIQ	186.0510, 22.3260, 13.8940

# Conversions

## Conversions Part 2

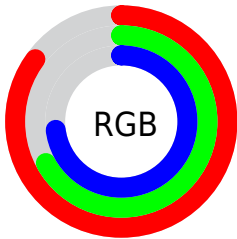
<b>Format</b>	<b>Color</b>
R <sub>Y</sub> B	216, 171, 185
Decimal	14199737
CIE Lab	74.34, 18.61, -0.87
CIE LCh	74, 18.635, 357.312
Yxy	47.2275, 0.3416, 0.3124
Android (android.graphics.Color)	4292389817 (0xFFD8ABB9)
YUV	186.0510, -0.5181, 26.2653
Hunter-Lab	68.7223, 13.8631, 2.9898

# Details

The Decimal color **14199737** is a light color, and the websafe version is hex **CC9999**. A complement of this color would be **11262154**, and the grayscale version is **12237498**.

A 20% lighter version of the original color is **16770033**, and **10581892** is the 20% darker color. If you saturate the color by 10%, you get **14194090**, and if you desaturate by 10%, it is **14205384**.

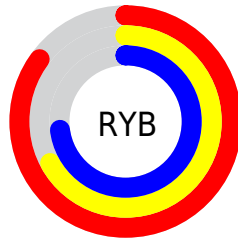
# Distribution



Red (85%)

Green (67%)

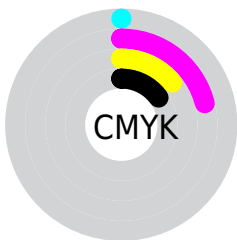
Blue (73%)



Red (85%)

Yellow (67%)

Blue (73%)

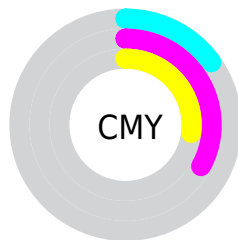


Cyan (0%)

Magenta (21%)

Yellow (14%)

Black (15%)



Cyan (15%)

Magenta (33%)

Yellow (27%)

# Brightness & Saturation Gradients

These gradients show how the Decimal color 14199737 changes by changing the brightness by 10 percent. The first figure shows a shift by +10% for each color and the second figure -10%.

Similar to the brightness gradients but the following saturation gradients show a change of the Decimal color 14199737 by changing the saturation by 10% instead.



 14199737

 14199737

16777215

 12357790

 16770033

 10581892

 8805995

 7095891

 5451580

 3873062

 2490641

 0

 14199737

 14199737

 14194090

 14205384

 14188699

 14210775

 14183052

 14216422

 14177661

 14221301

 14172015

 14221311

 14166368

 14160977

 14155843

# Harmonies

## Analogous

The Analogous color harmony consists of three colors that are next to each other on the color wheel.



13414090



14199737



14396584

# Triad

The Triadic color harmony groups three colors that are evenly spaced from another and form a triangle on the color wheel.



14199737



11778968



9486035

# Complementary

The Complementary color scheme is a pair of colors which are on the opposite of each other on the color wheel.



14199737



11262154

# Split Complementary

Split-complementary colors differ from the complementary color scheme. The scheme consists of three colors, the original color and two neighbors of the complement color.



9027782



14199737



10534820

# Square

The Square scheme is like the rectangle color scheme, but the four colors are evenly spaced on the color wheel.



14199737



13022613



9486773



10664409

# Rectangle

The Rectangle color scheme consists of four colors that form a rectangle on the color wheel.



14199737



14134942



9486773



9224143



# Sweetspot

The Sweet Spot groups the original color and five complimentary colors.



14199737



16773364



13282264



8419193



0



8421504



# Same Dimension

The Same Dimension uses a secret algorithm to generate beautiful new colors.



14199737



16760787



14201771



7037028



11206709



2818061



# Inverse Universe

The Inverse Universe completely reimagines the original color for something new.



14199737



16760787



11260120



7037028



11206709

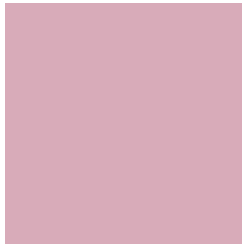


2818061



# Previews

## White Background



This preview shows how the Decimal color 14199737 looks on a white background.

## Color Contrast Check

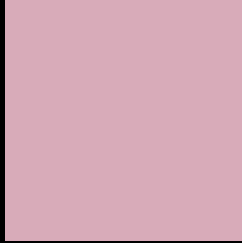
Large Text (above 18pt) WCAG AA × Fail

Any Text WCAG AA × Fail

Large Text (above 18pt) WCAG AAA × Fail

Any Text WCAG AAA × Fail

# Black Background



This preview shows how the Decimal color 14199737 looks on a black background.

## Color Contrast Check

Large Text (above 18pt) WCAG AA ✓ Pass

Any Text WCAG AA ✓ Pass

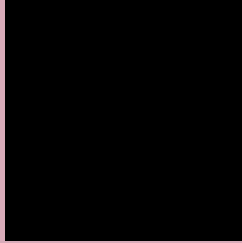
Large Text (above 18pt) WCAG AAA ✓ Pass

Any Text WCAG AAA ✓ Pass

If you want to check with other color combinations, try the [Color Contrast Checker](#).



## Decimal 14199737 Background



This preview shows how black text looks on a background with the Decimal color 14199737.

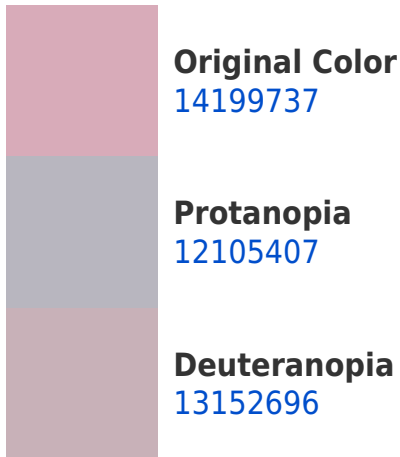



This preview shows how white text looks on a background with the Decimal color 14199737.

# Color Blindness Simulation

Color vision deficiency is a very complex topic, and I could not describe the different causes any better than Wikipedia does, so if you want to learn more, you should check out their [article about color blindness](#).

## Dichromacy





**Tritanopia**  
14199736

# Trichromacy



**Original Color**  
14199737

**Protanomaly**  
12890813

**Deuteranomaly**  
13545400

**Tritanomaly**  
14199736

# Monochromacy



**Original Color**  
14199737

**Achromatopsia**  
12237498

**Achromatomaly**  
12957114

# CSS Examples

## Text

The CSS property to change the color of the text to Decimal 14199737 is called "color". The color property can be set on classes, ids or directly on the HTML element.

This example shows how text in the color #D8ABB9 looks like.

```
.text, #text, p{  
    color:#D8ABB9  
}
```

If you want to add a text shadow in that color use the text-shadow property, you can generate a text shadow directly with our [CSS Text Shadow Generator](#).

Here you see how black text with a 4 pixel #D8ABB9 colored shadow looks like.

```
.shadow{ text-shadow: 4px 4px 2px #D8ABB9
}
```

## Border

The CSS property to change the border of an element to Decimal 14199737 is called "border". The border property can be set on classes, ids or directly on the HTML element.

This example shows the color as border, it can be applied via the CSS property "border" or "border-color".

```
.border, #border, table{ border:4px solid
#D8ABB9 }
```

If only the border color should be changed use the property `border-color`.

```
.border{ border-color:#D8ABB9 }
```

If you want to add a box shadow in that color use:

Here you see how a box with a 4 pixel #D8ABB9 colored shadow looks like.

```
.boxshadow{ -moz-box-shadow:4px 4px 4px  
4px #D8ABB9; -webkit-box-shadow:4px 4px  
4px 4px #D8ABB9; box-shadow:4px 4px 4px  
4px #D8ABB9 }
```

# Background

The CSS property to change the background color of an element to Decimal 14199737 is called "background". The background property can be set on classes, ids or directly on the HTML element.

```
.background, #background, body{  
background:#D8ABB9 }
```

If only the background color should be changed can be used:

```
.background{ background-color:#D8ABB9 }
```

This example shows the color as background, it is applied via the CSS property "background".

To optimize and compress your CSS code, you can use our [online CSS compressor and optimizer](#) based on csstidy. If you want to create a linear or radial gradient as background or border, check our [CSS Gradient Generator](#).



Hey! You found this booklet interesting? Support Converting Colors with the new Membership Option!

The pro membership hides all ads, plus gives you double the colors in the color bucket, and more awesome pro features!

**[Learn more, Memberships starting at \\$2.50/m!](#)**

**Follow me  
on Twitter!**

@ConvertingColor