

# Converting Colors

Decimal(14200743)

Have a look what the booklet for  
Decimal(14200743) contains.

|  |    |
|--|----|
| <b>Decimal(14200743)</b> .....                 | 3  |
| <i><b>Conversions</b></i> .....                | 4  |
| <i><b>Details</b></i> .....                    | 6  |
| <i><b>Harmonies</b></i> .....                  | 11 |
| <i><b>Previews</b></i> .....                   | 23 |
| <i><b>Color Blindness Simulation</b></i> ..... | 26 |
| <i><b>CSS Examples</b></i> .....               | 29 |

# **Color**

**Decimal(14200743)**

# Conversions

## Conversions Part 1

| Format      | Color                     |
|-------------|---------------------------|
| Hex         | D8AFA7                    |
| RGB         | 216, 175, 167             |
| RGB Percent | 85%, 69%, 65%             |
| CMY         | 0.1529, 0.3137, 0.3451    |
| CMYK        | 0.00, 0.19, 0.23, 0.15    |
| HSL         | 10°, 39%, 75%             |
| HSV         | 10°, 23%, 85%             |
| XYZ         | 50.6239, 48.0489, 43.1654 |
| YIQ         | 186.3470, 27.0040, 6.2040 |

# Conversions

## Conversions Part 2

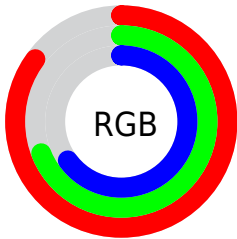
| Format                              | Color                         |
|-------------------------------------|-------------------------------|
| R <sub>Y</sub> B                    | 216, 177, 167                 |
| Decimal                             | 14200743                      |
| CIE Lab                             | 74.86, 13.68, 9.73            |
| CIE LCh                             | 75, 16.784, 35.410            |
| Yxy                                 | 48.0489, 0.3569,<br>0.3388    |
| Android<br>(android.graphics.Color) | 4292390823<br>(0xFFD8AFA7)    |
| YUV                                 | 186.3470, -9.5381,<br>26.0057 |
| Hunter-Lab                          | 69.3173, 9.0571,<br>11.6009   |

# Details

The Decimal color **14200743** is a light color, and the websafe version is hex **CC9999**. A complement of this color would be **10997976**, and the grayscale version is **12237498**.

A 20% lighter version of the original color is **16771038**, and **10517107** is the 20% darker color. If you saturate the color by 10%, you get **14196113**, and if you desaturate by 10%, it is **14205373**.

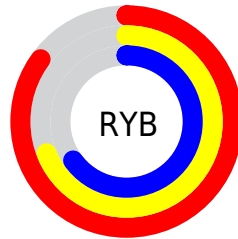
# Distribution



Red (85%)

Green (69%)

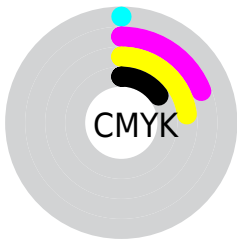
Blue (65%)



Red (85%)

Yellow (69%)

Blue (65%)

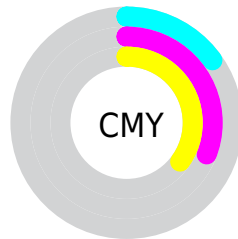


Cyan (0%)

Magenta (19%)

Yellow (23%)

Black (15%)



Cyan (15%)

Magenta (31%)

Yellow (35%)

# Brightness & Saturation Gradients

These gradients show how the Decimal color 14200743 changes by changing the brightness by 10 percent. The first figure shows a shift by +10% for each color and the second figure -10%.

Similar to the brightness gradients but the following saturation gradients show a change of the Decimal color 14200743 by changing the saturation by 10% instead.



 14200743

 14200743


16777215

 12358797

 16771038

 10517107

 16777211

 8807003

 7096899

 5452589

 3874072

 2491904

 0

 14200743

 14200743

 14196113

 14205373

 14191484

 14210002

 14186854

 14214632

 14182225

 14219261

 14177595

 14221311

 14172965

 14168080

 14164736

# Harmonies

## Analogous

The Analogous color harmony consists of three colors that are next to each other on the color wheel.



14200502



14200743



13677469

# Triad

The Triadic color harmony groups three colors that are evenly spaced from another and form a triangle on the color wheel.



14200743



10469547



11254231

# Complementary

The Complementary color scheme is a pair of colors which are on the opposite of each other on the color wheel.



14200743



10997976

# Split Complementary

Split-complementary colors differ from the complementary color scheme. The scheme consists of three colors, the original color and two neighbors of the complement color.



10075604



14200743



9683387

# Square

The Square scheme is like the rectangle color scheme, but the four colors are evenly spaced on the color wheel.



14200743



11582879



9486538



12563409

# Rectangle

The Rectangle color scheme consists of four colors that form a rectangle on the color wheel.



14200743



13088410



9486538



10795735



# Sweetspot

The Sweet Spot groups the original color and five complimentary colors.



14200743



16773357



14198737



8419189



0



8421504



# Same Dimension

The Same Dimension uses a secret algorithm to generate beautiful new colors.



14200743



16762298



14206887



7037536



11213824



2819840

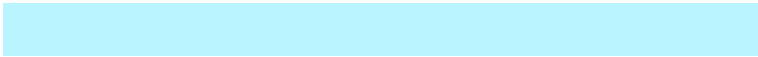


# Inverse Universe

The Inverse Universe completely reimagines the original color for something new.



10997976



12252415



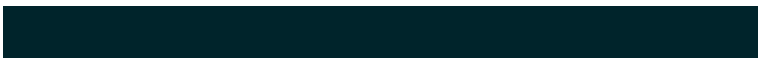
10991832



6318443



36779



9259



# Previews

## White Background



This preview shows how the Decimal color 14200743 looks on a white background.

## Color Contrast Check

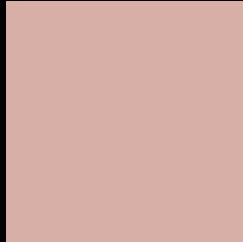
Large Text (above 18pt) WCAG AA × Fail

Any Text WCAG AA × Fail

Large Text (above 18pt) WCAG AAA × Fail

Any Text WCAG AAA × Fail

# Black Background



This preview shows how the Decimal color 14200743 looks on a black background.

## Color Contrast Check

Large Text (above 18pt) WCAG AA ✓ Pass

Any Text WCAG AA ✓ Pass

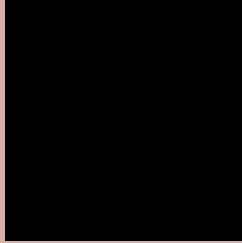
Large Text (above 18pt) WCAG AAA ✓ Pass

Any Text WCAG AAA ✓ Pass

If you want to check with other color combinations, try the [Color Contrast Checker](#).



## Decimal 14200743 Background



This preview shows how black text looks on a background with the Decimal color 14200743.



This preview shows how white text looks on a background with the Decimal color 14200743.

# Color Blindness Simulation

Color vision deficiency is a very complex topic, and I could not describe the different causes any better than Wikipedia does, so if you want to learn more, you should check out their [article about color blindness](#).


## Dichromacy



**Original Color**  
14200743

**Protanopia**  
12564652

**Deuteranopia**  
13742758



**Tritanopia**  
14331066

# Trichromacy



**Original Color**  
14200743

**Protanomaly**  
13153706

**Deuteranomaly**  
13939110

**Tritanomaly**  
14265779

# Monochromacy



**Original Color**  
14200743

**Achromatopsia**  
12237498

**Achromatomaly**  
12957363

# CSS Examples

## Text

The CSS property to change the color of the text to Decimal 14200743 is called "color". The color property can be set on classes, ids or directly on the HTML element.

This example shows how text in the color #D8AFA7 looks like.

```
.text, #text, p{  
    color:#D8AFA7  
}
```

If you want to add a text shadow in that color use the text-shadow property, you can generate a text shadow directly with our [CSS Text Shadow Generator](#).

Here you see how black text with a 4 pixel #D8AFA7 colored shadow looks like.

```
.shadow{ text-shadow: 4px 4px 2px #D8AFA7
}
```

## Border

The CSS property to change the border of an element to Decimal 14200743 is called "border". The border property can be set on classes, ids or directly on the HTML element.

This example shows the color as border, it can be applied via the CSS property "border" or "border-color".

```
.border, #border, table{ border:4px solid
#D8AFA7 }
```

If only the border color should be changed use the property `border-color`.

```
.border{ border-color:#D8AFA7 }
```

If you want to add a box shadow in that color use:

Here you see how a box with a 4 pixel #D8AFA7 colored shadow looks like.

```
.boxshadow{ -moz-box-shadow:4px 4px 4px  
4px #D8AFA7; -webkit-box-shadow:4px 4px  
4px 4px #D8AFA7; box-shadow:4px 4px 4px  
4px #D8AFA7 }
```

# Background

The CSS property to change the background color of an element to Decimal 14200743 is called "background". The background property can be set on classes, ids or directly on the HTML element.

```
.background, #background, body{  
background:#D8AFA7 }
```

If only the background color should be changed can be used:

```
.background{ background-color:#D8AFA7 }
```

This example shows the color as background, it is applied via the CSS property "background".

To optimize and compress your CSS code, you can use our [online CSS compressor and optimizer](#) based on csstidy. If you want to create a linear or radial gradient as background or border, check our [CSS Gradient Generator](#).



Hey! You found this booklet interesting? Support Converting Colors with the new Membership Option!

The pro membership hides all ads, plus gives you double the colors in the color bucket, and more awesome pro features!

**[Learn more, Memberships starting at \\$2.50/m!](#)**

**Follow me  
on Twitter!**

@ConvertingColor