

Converting Colors

Decimal(14202002)

Have a look what the booklet for
Decimal(14202002) contains.

Decimal(14202002)	3
<i>Conversions</i>	4
<i>Details</i>	6
<i>Harmonies</i>	11
<i>Previews</i>	23
<i>Color Blindness Simulation</i>	26
<i>CSS Examples</i>	29

Color

Decimal(14202002)

Conversions

Conversions Part 1

Format	Color
Hex	D8B492
RGB	216, 180, 146
RGB Percent	85%, 71%, 57%
CMY	0.1529, 0.2941, 0.4275
CMYK	0.00, 0.17, 0.32, 0.15
HSL	29°, 47%, 71%
HSV	29°, 32%, 85%
XYZ	49.8285, 49.3168, 34.0870
YIQ	186.8880, 32.3700, -2.9420

Conversions

Conversions Part 2

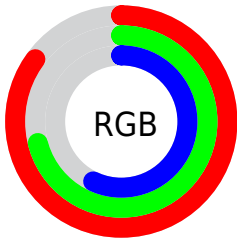
Format	Color
R _Y B	216, 212, 146
Decimal	14202002
CIE Lab	75.65, 8.13, 22.21
CIE LCh	76, 23.653, 69.894
Yxy	49.3168, 0.3740, 0.3702
Android (android.graphics.Color)	4292392082 (0xFFD8B492)
YUV	186.8880, -20.1578, 25.5312
Hunter-Lab	70.2259, 3.7585, 20.3793

Details

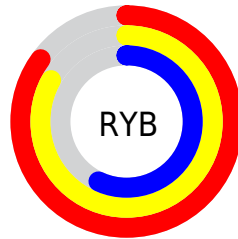
The Decimal color **14202002** is a light color, and the websafe version is hex **FFCC99**. A complement of this color would be **9615064**, and the grayscale version is **12303291**.

A 20% lighter version of the original color is **16772296**, and **10518367** is the 20% darker color. If you saturate the color by 10%, you get **14199164**, and if you desaturate by 10%, it is **14204840**.

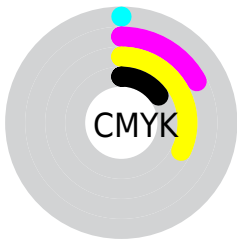
Distribution



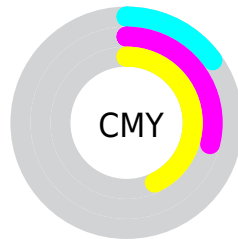
- Red (85%)
- Green (71%)
- Blue (57%)



- Red (85%)
- Yellow (83%)
- Blue (57%)



- Cyan (0%)
- Magenta (17%)
- Yellow (32%)
- Black (15%)



- Cyan (15%)
- Magenta (29%)
- Yellow (43%)

Brightness & Saturation Gradients

These gradients show how the Decimal color 14202002 changes by changing the brightness by 10 percent. The first figure shows a shift by +10% for each color and the second figure -10%.

Similar to the brightness gradients but the following saturation gradients show a change of the Decimal color 14202002 by changing the saturation by 10% instead.

 14202002

 14202002

16777215

 12360056

 16772296

 10518367

 16777188

 8742471

 7032369

 5388059

 3744258

 2231552

 0

 14202002

 14202002

 14199164

 14204840

 14196327

 14207677

 14193489

 14210515

 14190652

 14213352

 14187558

 14216446

 14184720

 14219263

 14182656

 14221311

Harmonies

Analogous

The Analogous color harmony consists of three colors that are next to each other on the color wheel.



15052447



14202002



12827535

Triad

The Triadic color harmony groups three colors that are evenly spaced from another and form a triangle on the color wheel.



14202002



8505281



13087452

Complementary

The Complementary color scheme is a pair of colors which are on the opposite of each other on the color wheel.



14202002



9615064

Split Complementary

Split-complementary colors differ from the complementary color scheme. The scheme consists of three colors, the original color and two neighbors of the complement color.



11188965



14202002



8308182

Square

The Square scheme is like the rectangle color scheme, but the four colors are evenly spaced on the color wheel.



14202002



9684651



9355747



14527946

Rectangle

The Rectangle color scheme consists of four colors that form a rectangle on the color wheel.



14202002



11780244



9355747



12498400

Sweetspot

The Sweet Spot groups the original color and five complimentary colors.



14202002



16773862



14193334



8419440



0



8421504

Same Dimension

The Same Dimension uses a secret algorithm to generate beautiful new colors.



14202002



16764060



14210962



7038560



11227904



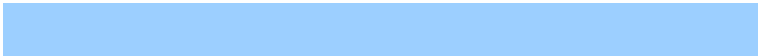
2823424

Inverse Universe

The Inverse Universe completely reimagines the original color for something new.



9615064



10276863



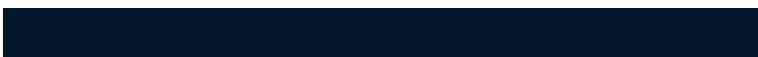
9606104



6317675



22699



5675

Previews

White Background



This preview shows how the Decimal color 14202002 looks on a white background.

Color Contrast Check

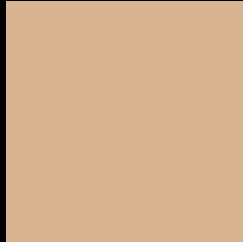
Large Text (above 18pt) WCAG AA × Fail

Any Text WCAG AA × Fail

Large Text (above 18pt) WCAG AAA × Fail

Any Text WCAG AAA × Fail

Black Background



This preview shows how the Decimal color 14202002 looks on a black background.

Color Contrast Check

Large Text (above 18pt) WCAG AA ✓ Pass

Any Text WCAG AA ✓ Pass

Large Text (above 18pt) WCAG AAA ✓ Pass

Any Text WCAG AAA ✓ Pass

If you want to check with other color combinations, try the [Color Contrast Checker](#).

Decimal 14202002 Background



This preview shows how black text looks on a background with the Decimal color 14202002.



This preview shows how white text looks on a background with the Decimal color 14202002.

Color Blindness Simulation

Color vision deficiency is a very complex topic, and I could not describe the different causes any better than Wikipedia does, so if you want to learn more, you should check out their [article about color blindness](#).


Dichromacy



Original Color
14202002

Protanopia
13023893

Deuteranopia
14332818



Tritanopia
14528188

Trichromacy



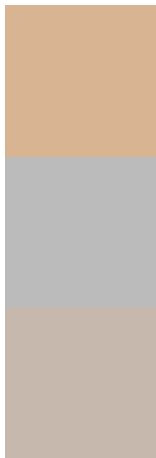
Original Color
14202002

Protanomaly
13482132

Deuteranomaly
14267282

Tritanomaly
14397613

Monochromacy



Original Color
14202002

Achromatopsia
12303291

Achromatomaly
13023404

CSS Examples

Text

The CSS property to change the color of the text to Decimal 14202002 is called "color". The color property can be set on classes, ids or directly on the HTML element.

This example shows how text in the color #D8B492 looks like.

```
.text, #text, p{  
    color:#D8B492  
}
```

If you want to add a text shadow in that color use the text-shadow property, you can generate a text shadow directly with our [CSS Text Shadow Generator](#).

Here you see how black text with a 4 pixel #D8B492 colored shadow looks like.

```
.shadow{ text-shadow: 4px 4px 2px #D8B492
}
```

Border

The CSS property to change the border of an element to Decimal 14202002 is called "border". The border property can be set on classes, ids or directly on the HTML element.

This example shows the color as border, it can be applied via the CSS property "border" or "border-color".

```
.border, #border, table{ border:4px solid
#D8B492 }
```

If only the border color should be changed use the property `border-color`.

```
.border{ border-color:#D8B492 }
```

If you want to add a box shadow in that color use:

Here you see how a box with a 4 pixel #D8B492 colored shadow looks like.

```
.boxshadow{ -moz-box-shadow:4px 4px 4px  
4px #D8B492; -webkit-box-shadow:4px 4px  
4px 4px #D8B492; box-shadow:4px 4px 4px  
4px #D8B492 }
```

Background

The CSS property to change the background color of an element to Decimal 14202002 is called "background". The background property can be set on classes, ids or directly on the HTML element.

```
.background, #background, body{  
background:#D8B492 }
```

If only the background color should be changed can be used:

```
.background{ background-color:#D8B492 }
```

This example shows the color as background, it is applied via the CSS property "background".

To optimize and compress your CSS code, you can use our [online CSS compressor and optimizer](#) based on csstidy. If you want to create a linear or radial gradient as background or border, check our [CSS Gradient Generator](#).

Hey! You found this booklet interesting? Support Converting Colors with the new Membership Option!

The pro membership hides all ads, plus gives you double the colors in the color bucket, and more awesome pro features!

[Learn more, Memberships starting at \\$2.50/m!](#)

**Follow me
on Twitter!**

@ConvertingColor