

Converting Colors

Decimal(14202021)

Have a look what the booklet for
Decimal(14202021) contains.

Decimal(14202021)	3
<i>Conversions</i>	4
<i>Details</i>	6
<i>Harmonies</i>	11
<i>Previews</i>	23
<i>Color Blindness Simulation</i>	26
<i>CSS Examples</i>	29

Color

Decimal(14202021)

Conversions

Conversions Part 1

Format	Color
Hex	D8B4A5
RGB	216, 180, 165
RGB Percent	85%, 71%, 65%
CMY	0.1529, 0.2941, 0.3529
CMYK	0.00, 0.17, 0.24, 0.15
HSL	18°, 40%, 75%
HSV	18°, 24%, 85%
XYZ	51.4317, 49.9581, 42.5294
YIQ	189.0540, 26.2710, 2.9670

Conversions

Conversions Part 2

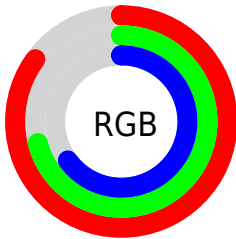
Format	Color
R_{YB}	216, 186, 165
Decimal	14202021
CIE Lab	76.04, 10.70, 12.50
CIE LCh	76, 16.456, 49.421
Yxy	49.9581, 0.3574, 0.3471
Android (android.graphics.Color)	4292392101 (0xFFD8B4A5)
YUV	189.0540, -11.8586, 23.6316
Hunter-Lab	70.6810, 6.1954, 13.8014

Details

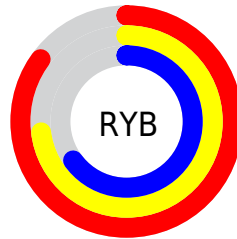
The Decimal color **14202021** is a light color, and the websafe version is hex **CC9999**. A complement of this color would be **10865112**, and the grayscale version is **12434877**.

A 20% lighter version of the original color is **16772316**, and **10583921** is the 20% darker color. If you saturate the color by 10%, you get **14198159**, and if you desaturate by 10%, it is **14205883**.

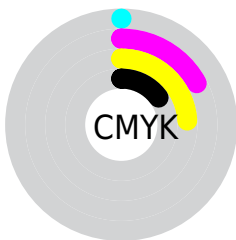
Distribution



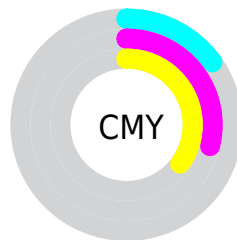
- Red (85%)
- Green (71%)
- Blue (65%)



- Red (85%)
- Yellow (73%)
- Blue (65%)



- Cyan (0%)
- Magenta (17%)
- Yellow (24%)
- Black (15%)



- Cyan (15%)
- Magenta (29%)
- Yellow (35%)

Brightness & Saturation Gradients

These gradients show how the Decimal color 14202021 changes by changing the brightness by 10 percent. The first figure shows a shift by +10% for each color and the second figure -10%.

Similar to the brightness gradients but the following saturation gradients show a change of the Decimal color 14202021 by changing the saturation by 10% instead.

 14202021

 14202021

16777215

 12360075

 16772316

 10583921

 16777209

 8808025

 7097921

 5453611

 3875351

 2427904

 0

 14202021

 14202021

■ 14198159

■ 14205883

■ 14194298

■ 14209744

■ 14190180

■ 14213862

■ 14186319

■ 14217723

■ 14182457

■ 14221311

■ 14178595

■ 14174478

■ 14172160

Harmonies

Analogous

The Analogous color harmony consists of three colors that are next to each other on the color wheel.



14463410



14202021



13482398

Triad

The Triadic color harmony groups three colors that are evenly spaced from another and form a triangle on the color wheel.



14202021



10273973



12106200

Complementary

The Complementary color scheme is a pair of colors which are on the opposite of each other on the color wheel.



14202021



10865112

Split Complementary

Split-complementary colors differ from the complementary color scheme. The scheme consists of three colors, the original color and two neighbors of the complement color.



10796761



14202021



9749701

Square

The Square scheme is like the rectangle color scheme, but the four colors are evenly spaced on the color wheel.



14202021



11322023



9945810



13284815

Rectangle

The Rectangle color scheme consists of four colors that form a rectangle on the color wheel.



14202021



12827806



9945810



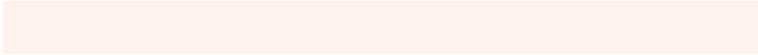
11647961

Sweetspot

The Sweet Spot groups the original color and five complimentary colors.



14202021



16773869



14198218



8419445



0



8421504

Same Dimension

The Same Dimension uses a secret algorithm to generate beautiful new colors.



14202021



16764344



14208421



7038048



11219456



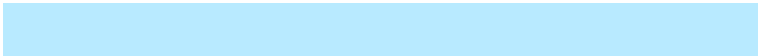
2821376

Inverse Universe

The Inverse Universe completely reimagines the original color for something new.



10865112



12118783



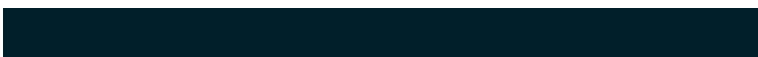
10858712



6318187



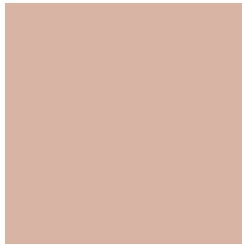
31147



7979

Previews

White Background



This preview shows how the Decimal color 14202021 looks on a white background.

Color Contrast Check

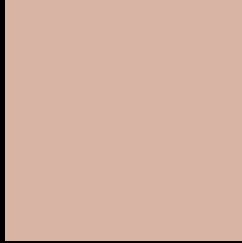
Large Text (above 18pt) WCAG AA × Fail

Any Text WCAG AA × Fail

Large Text (above 18pt) WCAG AAA × Fail

Any Text WCAG AAA × Fail

Black Background



This preview shows how the Decimal color 14202021 looks on a black background.

Color Contrast Check

Large Text (above 18pt) WCAG AA ✓ Pass

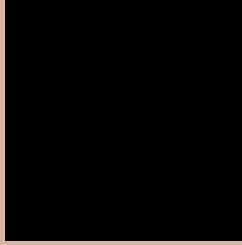
Any Text WCAG AA ✓ Pass

Large Text (above 18pt) WCAG AAA ✓ Pass

Any Text WCAG AAA ✓ Pass

If you want to check with other color combinations, try the [Color Contrast Checker](#).

Decimal 14202021 Background



This preview shows how black text looks on a background with the Decimal color 14202021.



This preview shows how white text looks on a background with the Decimal color 14202021.

Color Blindness Simulation

Color vision deficiency is a very complex topic, and I could not describe the different causes any better than Wikipedia does, so if you want to learn more, you should check out their [article about color blindness](#).


Dichromacy



Original Color
14202021

Protanopia
12827561

Deuteranopia
14071205



Tritanopia
14397630

Trichromacy



Original Color
14202021

Protanomaly
13351080

Deuteranomaly
14136741

Tritanomaly
14332341

Monochromacy



Original Color
14202021

Achromatopsia
12434877

Achromatomaly
13089460

CSS Examples

Text

The CSS property to change the color of the text to Decimal 14202021 is called "color". The color property can be set on classes, ids or directly on the HTML element.

This example shows how text in the color #D8B4A5 looks like.

```
.text, #text, p{  
    color:#D8B4A5  
}
```

If you want to add a text shadow in that color use the text-shadow property, you can generate a text shadow directly with our [CSS Text Shadow Generator](#).

Here you see how black text with a 4 pixel #D8B4A5 colored shadow looks like.

```
.shadow{ text-shadow: 4px 4px 2px #D8B4A5
}
```

Border

The CSS property to change the border of an element to Decimal 14202021 is called "border". The border property can be set on classes, ids or directly on the HTML element.

This example shows the color as border, it can be applied via the CSS property "border" or "border-color".

```
.border, #border, table{ border:4px solid
#D8B4A5 }
```

If only the border color should be changed use the property `border-color`.

```
.border{ border-color:#D8B4A5 }
```

If you want to add a box shadow in that color use:

Here you see how a box with a 4 pixel #D8B4A5 colored shadow looks like.

```
.boxshadow{ -moz-box-shadow:4px 4px 4px  
4px #D8B4A5; -webkit-box-shadow:4px 4px  
4px 4px #D8B4A5; box-shadow:4px 4px 4px  
4px #D8B4A5 }
```

Background

The CSS property to change the background color of an element to Decimal 14202021 is called "background". The background property can be set on classes, ids or directly on the HTML element.

```
.background, #background, body{  
background:#D8B4A5 }
```

If only the background color should be changed can be used:

```
.background{ background-color:#D8B4A5 }
```

This example shows the color as background, it is applied via the CSS property "background".

To optimize and compress your CSS code, you can use our [online CSS compressor and optimizer](#) based on csstidy. If you want to create a linear or radial gradient as background or border, check our [CSS Gradient Generator](#).

Hey! You found this booklet interesting? Support Converting Colors with the new Membership Option!

The pro membership hides all ads, plus gives you double the colors in the color bucket, and more awesome pro features!

[Learn more, Memberships starting at \\$2.50/m!](#)

**Follow me
on Twitter!**

@ConvertingColor