

Converting Colors

Decimal(14202556)

Have a look what the booklet for
Decimal(14202556) contains.

Decimal(14202556)	3
<i>Conversions</i>	4
<i>Details</i>	6
<i>Harmonies</i>	11
<i>Previews</i>	23
<i>Color Blindness Simulation</i>	26
<i>CSS Examples</i>	29

Color

Decimal(14202556)

Conversions

Conversions Part 1

Format	Color
Hex	D8B6BC
RGB	216, 182, 188
RGB Percent	85%, 71%, 74%
CMY	0.1529, 0.2863, 0.2627
CMYK	0.00, 0.16, 0.13, 0.15
HSL	349°, 30%, 78%
HSV	349°, 16%, 85%
XYZ	54.1240, 51.6857, 54.7006
YIQ	192.8500, 18.3380, 9.0740

Conversions

Conversions Part 2

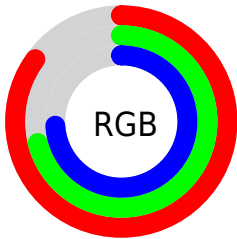
Format	Color
R_{YB}	216, 182, 188
Decimal	14202556
CIE _{Lab}	77.09, 13.17, 1.51
CIE _{LCh}	77, 13.258, 6.552
Yxy	51.6857, 0.3372, 0.3220
Android (android.graphics.Color)	4292392636 (0xFFD8B6BC)
YUV	192.8500, -2.3911, 20.3025
Hunter-Lab	71.8927, 8.5702, 5.2133

Details

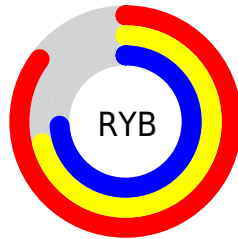
The Decimal color **14202556** is a light color, and the websafe version is hex **FFCCCC**. A complement of this color would be **11983058**, and the grayscale version is **12698049**.

A 20% lighter version of the original color is **16772852**, and **10584455** is the 20% darker color. If you saturate the color by 10%, you get **14196906**, and if you desaturate by 10%, it is **14208206**.

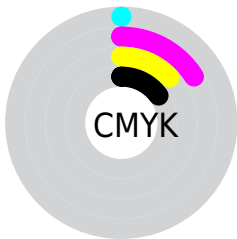
Distribution



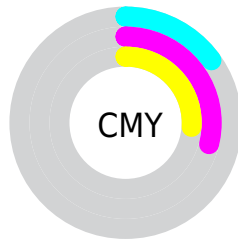
- Red (85%)
- Green (71%)
- Blue (74%)



- Red (85%)
- Yellow (71%)
- Blue (74%)



- Cyan (0%)
- Magenta (16%)
- Yellow (13%)
- Black (15%)



- Cyan (15%)
- Magenta (29%)
- Yellow (26%)

Brightness & Saturation Gradients

These gradients show how the Decimal color 14202556 changes by changing the brightness by 10 percent. The first figure shows a shift by +10% for each color and the second figure -10%.

Similar to the brightness gradients but the following saturation gradients show a change of the Decimal color 14202556 by changing the saturation by 10% instead.

 14202556


 14202556


16777215

 12360609

 16772852

 10584455


 8808558

 7163989

 5519678

 3941160

 2493972

 131072

 0

 14202556

 14202556

 14196906

 14208206

 14191512

 14213600

 14185863

 14219249

 14180469

 14221311

 14174819

 14169169

 14163775

 14158126

 14155814

Harmonies

Analogous

The Analogous color harmony consists of three colors that are next to each other on the color wheel.



13744072



14202556



14202800

Triad

The Triadic color harmony groups three colors that are evenly spaced from another and form a triangle on the color wheel.



14202556



12108458



10994388

Complementary

The Complementary color scheme is a pair of colors which are on the opposite of each other on the color wheel.



14202556



11983058

Split Complementary

Split-complementary colors differ from the complementary color scheme. The scheme consists of three colors, the original color and two neighbors of the complement color.



10536396



14202556



11191732

Square

The Square scheme is like the rectangle color scheme, but the four colors are evenly spaced on the color wheel.



14202556



13024934



10602177



11910870

Rectangle

The Rectangle color scheme consists of four colors that form a rectangle on the color wheel.



14202556



13941162



10602177



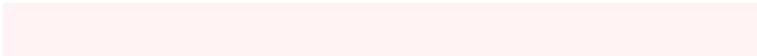
10798034

Sweetspot

The Sweet Spot groups the original color and five complimentary colors.



14202556



16773877



13809368



8419449



0



8421504

Same Dimension

The Same Dimension uses a secret algorithm to generate beautiful new colors.



14202556



16764887



14205366



7037026



11206686



2818056

Inverse Universe

The Inverse Universe completely reimagines the original color for something new.



14202556



16764887



11980248



7037026



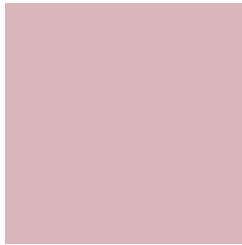
11206686



2818056

Previews

White Background



This preview shows how the Decimal color 14202556 looks on a white background.

Color Contrast Check

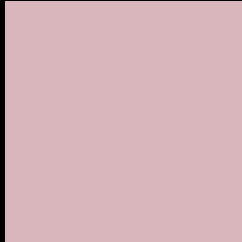
Large Text (above 18pt) WCAG AA × Fail

Any Text WCAG AA × Fail

Large Text (above 18pt) WCAG AAA × Fail

Any Text WCAG AAA × Fail

Black Background



This preview shows how the Decimal color 14202556 looks on a black background.

Color Contrast Check

Large Text (above 18pt) WCAG AA ✓ Pass

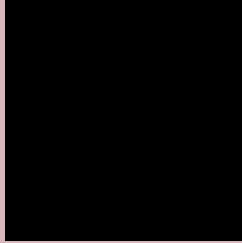
Any Text WCAG AA ✓ Pass

Large Text (above 18pt) WCAG AAA ✓ Pass

Any Text WCAG AAA ✓ Pass

If you want to check with other color combinations, try the [Color Contrast Checker](#).

Decimal 14202556 Background



This preview shows how black text looks on a background with the Decimal color 14202556.



This preview shows how white text looks on a background with the Decimal color 14202556.

Color Blindness Simulation

Color vision deficiency is a very complex topic, and I could not describe the different causes any better than Wikipedia does, so if you want to learn more, you should check out their [article about color blindness](#).


Dichromacy



Original Color
14202556

Protanopia
12697280

Deuteranopia
13809852



Tritanopia
14267843

Trichromacy



Original Color
14202556

Protanomaly
13220799

Deuteranomaly
13940668

Tritanomaly
14267840

Monochromacy



Original Color
14202556

Achromatopsia
12698049

Achromatomaly
13221311

CSS Examples

Text

The CSS property to change the color of the text to Decimal 14202556 is called "color". The color property can be set on classes, ids or directly on the HTML element.

This example shows how text in the color #D8B6BC looks like.

```
.text, #text, p{  
    color:#D8B6BC  
}
```

If you want to add a text shadow in that color use the text-shadow property, you can generate a text shadow directly with our [CSS Text Shadow Generator](#).

Here you see how black text with a 4 pixel #D8B6BC colored shadow looks like.

```
.shadow{ text-shadow: 4px 4px 2px #D8B6BC
}
```

Border

The CSS property to change the border of an element to Decimal 14202556 is called "border". The border property can be set on classes, ids or directly on the HTML element.

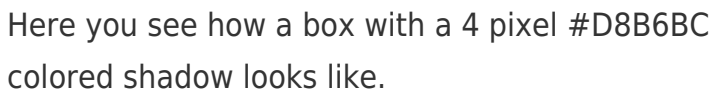
This example shows the color as border, it can be applied via the CSS property "border" or "border-color".

```
.border, #border, table{ border:4px solid
#D8B6BC }
```

If only the border color should be changed use the property `border-color`.

```
.border{ border-color:#D8B6BC }
```

If you want to add a box shadow in that color use:

A rectangular box with a 4px #D8B6BC shadow. The box is white with a thin border and a shadow that is 4 pixels wide and 4 pixels high, colored #D8B6BC. The shadow is visible on the right and bottom edges of the box.

Here you see how a box with a 4 pixel #D8B6BC colored shadow looks like.

```
.boxshadow{ -moz-box-shadow:4px 4px 4px  
4px #D8B6BC; -webkit-box-shadow:4px 4px  
4px 4px #D8B6BC; box-shadow:4px 4px 4px  
4px #D8B6BC }
```

Background

The CSS property to change the background color of an element to Decimal 14202556 is called "background". The background property can be set on classes, ids or directly on the HTML element.

```
.background, #background, body{  
background:#D8B6BC }
```

If only the background color should be changed can be used:

```
.background{ background-color:#D8B6BC }
```

This example shows the color as background, it is applied via the CSS property "background".

To optimize and compress your CSS code, you can use our [online CSS compressor and optimizer](#) based on csstidy. If you want to create a linear or radial gradient as background or border, check our [CSS Gradient Generator](#).

Hey! You found this booklet interesting? Support Converting Colors with the new Membership Option!

The pro membership hides all ads, plus gives you double the colors in the color bucket, and more awesome pro features!

[Learn more, Memberships starting at \\$2.50/m!](#)

**Follow me
on Twitter!**

@ConvertingColor