

Converting Colors

Decimal(14202806)

Have a look what the booklet for
Decimal(14202806) contains.

Decimal(14202806)	3
<i>Conversions</i>	4
<i>Details</i>	6
<i>Harmonies</i>	11
<i>Previews</i>	23
<i>Color Blindness Simulation</i>	26
<i>CSS Examples</i>	29

Color

Decimal(14202806)

Conversions

Conversions Part 1

Format	Color
Hex	D8B7B6
RGB	216, 183, 182
RGB Percent	85%, 72%, 71%
CMY	0.1529, 0.2824, 0.2863
CMYK	0.00, 0.15, 0.16, 0.15
HSL	2°, 30%, 78%
HSV	2°, 16%, 85%
XYZ	53.6959, 51.8433, 51.4326
YIQ	192.7530, 19.9890, 6.6850

Conversions

Conversions Part 2

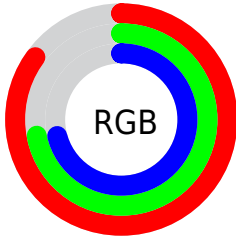
Format	Color
R _Y B	216, 183, 182
Decimal	14202806
CIE Lab	77.19, 11.67, 4.91
CIE LCh	77, 12.658, 22.809
Yxy	51.8433, 0.3421, 0.3303
Android (android.graphics.Color)	4292392886 (0xFFD8B7B6)
YUV	192.7530, -5.3012, 20.3876
Hunter-Lab	72.0023, 7.1128, 8.0496

Details

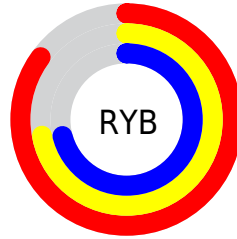
The Decimal color **14202806** is a light color, and the websafe version is hex **FFCCCC**. A complement of this color would be **11982808**, and the grayscale version is **12698049**.

A 20% lighter version of the original color is **16773102**, and **10584705** is the 20% darker color. If you saturate the color by 10%, you get **14197408**, and if you desaturate by 10%, it is **14208204**.

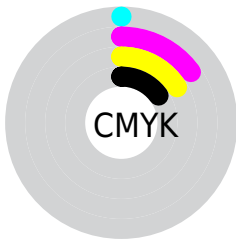
Distribution



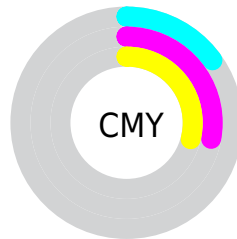
- Red (85%)
- Green (72%)
- Blue (71%)



- Red (85%)
- Yellow (72%)
- Blue (71%)



- Cyan (0%)
- Magenta (15%)
- Yellow (16%)
- Black (15%)



- Cyan (15%)
- Magenta (28%)
- Yellow (29%)

Brightness & Saturation Gradients

These gradients show how the Decimal color 14202806 changes by changing the brightness by 10 percent. The first figure shows a shift by +10% for each color and the second figure -10%.

Similar to the brightness gradients but the following saturation gradients show a change of the Decimal color 14202806 by changing the saturation by 10% instead.

 14202806


 14202806

16777215

 12360859

 16773102

 10584705

 8808808

 7164240

 5519929

 3941412

 2494222

 0

 14202806

 14202806

 14197408

 14208204

 14192011

 14213601

 14186613

 14218999

 14181216

 14221311

 14175818

 14170420

 14165023

 14159625

 14157312

Harmonies

Analogous

The Analogous color harmony consists of three colors that are next to each other on the color wheel.



14006210



14202806



13941164

Triad

The Triadic color harmony groups three colors that are evenly spaced from another and form a triangle on the color wheel.



14202806



11650224



11518166

Complementary

The Complementary color scheme is a pair of colors which are on the opposite of each other on the color wheel.



14202806



11982808

Split Complementary

Split-complementary colors differ from the complementary color scheme. The scheme consists of three colors, the original color and two neighbors of the complement color.



10798289



14202806



10929595

Square

The Square scheme is like the rectangle color scheme, but the four colors are evenly spaced on the color wheel.



14202806



12501417



10601927



12434900

Rectangle

The Rectangle color scheme consists of four colors that form a rectangle on the color wheel.



14202806



13614249



10601927



11256533

Sweetspot

The Sweet Spot groups the original color and five complimentary colors.



14202806



16774130



14202583



8419448



0



8421504

Same Dimension

The Same Dimension uses a secret algorithm to generate beautiful new colors.



14202806



16765135



14207158



7037280



11207936



2818304

Inverse Universe

The Inverse Universe completely reimagines the original color for something new.



11982808



13631231



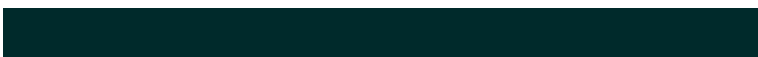
11978456



6318955



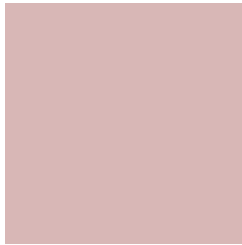
42667



10795

Previews

White Background



This preview shows how the Decimal color 14202806 looks on a white background.

Color Contrast Check

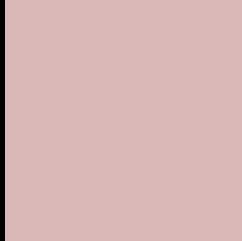
Large Text (above 18pt) WCAG AA × Fail

Any Text WCAG AA × Fail

Large Text (above 18pt) WCAG AAA × Fail

Any Text WCAG AAA × Fail

Black Background



This preview shows how the Decimal color 14202806 looks on a black background.

Color Contrast Check

Large Text (above 18pt) WCAG AA ✓ Pass

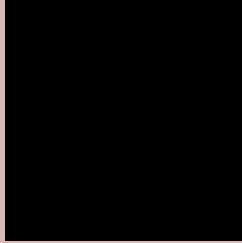
Any Text WCAG AA ✓ Pass

Large Text (above 18pt) WCAG AAA ✓ Pass

Any Text WCAG AAA ✓ Pass

If you want to check with other color combinations, try the [Color Contrast Checker](#).

Decimal 14202806 Background



This preview shows how black text looks on a background with the Decimal color 14202806.




This preview shows how white text looks on a background with the Decimal color 14202806.

Color Blindness Simulation

Color vision deficiency is a very complex topic, and I could not describe the different causes any better than Wikipedia does, so if you want to learn more, you should check out their [article about color blindness](#).

Dichromacy





Tritanopia
14333379

Trichromacy



Original Color
14202806

Protanomaly
13351865

Deuteranomaly
14071990

Tritanomaly
14268094

Monochromacy



Original Color
14202806

Achromatopsia
12698049

Achromatomaly
13221309

CSS Examples

Text

The CSS property to change the color of the text to Decimal 14202806 is called "color". The color property can be set on classes, ids or directly on the HTML element.

This example shows how text in the color #D8B7B6 looks like.

```
.text, #text, p{  
    color:#D8B7B6  
}
```

If you want to add a text shadow in that color use the text-shadow property, you can generate a text shadow directly with our [CSS Text Shadow Generator](#).

Here you see how black text with a 4 pixel #D8B7B6 colored shadow looks like.

```
.shadow{ text-shadow: 4px 4px 2px #D8B7B6
}
```

Border

The CSS property to change the border of an element to Decimal 14202806 is called "border". The border property can be set on classes, ids or directly on the HTML element.

This example shows the color as border, it can be applied via the CSS property "border" or "border-color".

```
.border, #border, table{ border:4px solid
#D8B7B6 }
```

If only the border color should be changed use the property `border-color`.

```
.border{ border-color:#D8B7B6 }
```

If you want to add a box shadow in that color use:

Here you see how a box with a 4 pixel #D8B7B6 colored shadow looks like.

```
.boxshadow{ -moz-box-shadow:4px 4px 4px  
4px #D8B7B6; -webkit-box-shadow:4px 4px  
4px 4px #D8B7B6; box-shadow:4px 4px 4px  
4px #D8B7B6 }
```

Background

The CSS property to change the background color of an element to Decimal 14202806 is called "background". The background property can be set on classes, ids or directly on the HTML element.

```
.background, #background, body{  
background:#D8B7B6 }
```

If only the background color should be changed can be used:

```
.background{ background-color:#D8B7B6 }
```

This example shows the color as background, it is applied via the CSS property "background".

To optimize and compress your CSS code, you can use our [online CSS compressor and optimizer](#) based on csstidy. If you want to create a linear or radial gradient as background or border, check our [CSS Gradient Generator](#).

Hey! You found this booklet interesting? Support Converting Colors with the new Membership Option!

The pro membership hides all ads, plus gives you double the colors in the color bucket, and more awesome pro features!

[Learn more, Memberships starting at \\$2.50/m!](#)

**Follow me
on Twitter!**

@ConvertingColor