

Converting Colors

Decimal(14203061)

Have a look what the booklet for
Decimal(14203061) contains.

Decimal(14203061)	3
<i>Conversions</i>	4
<i>Details</i>	6
<i>Harmonies</i>	11
<i>Previews</i>	23
<i>Color Blindness Simulation</i>	26
<i>CSS Examples</i>	29

Color

Decimal(14203061)

Conversions

Conversions Part 1

Format	Color
Hex	D8B8B5
RGB	216, 184, 181
RGB Percent	85%, 72%, 71%
CMY	0.1529, 0.2784, 0.2902
CMYK	0.00, 0.15, 0.16, 0.15
HSL	5°, 31%, 78%
HSV	5°, 16%, 85%
XYZ	53.7999, 52.2161, 50.9592
YIQ	193.2260, 20.0350, 5.8510

Conversions

Conversions Part 2

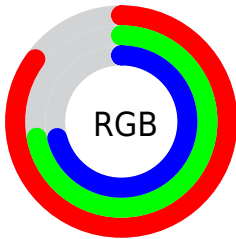
Format	Color
R _Y B	216, 184, 181
Decimal	14203061
CIE Lab	77.41, 10.97, 5.77
CIE LCh	77, 12.400, 27.736
Yxy	52.2161, 0.3427, 0.3326
Android (android.graphics.Color)	4292393141 (0xFFD8B8B5)
YUV	193.2260, -6.0274, 19.9728
Hunter-Lab	72.2607, 6.4414, 8.7704

Details

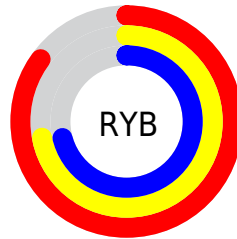
The Decimal color **14203061** is a light color, and the websafe version is hex **FFCCCC**. A complement of this color would be **11916760**, and the grayscale version is **12698049**.

A 20% lighter version of the original color is **16773357**, and **10584960** is the 20% darker color. If you saturate the color by 10%, you get **14197919**, and if you desaturate by 10%, it is **14208203**.

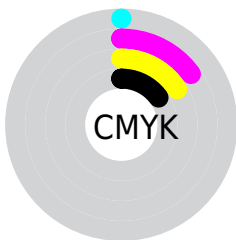
Distribution



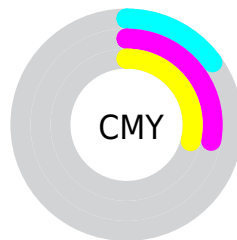
- Red (85%)
- Green (72%)
- Blue (71%)



- Red (85%)
- Yellow (72%)
- Blue (71%)



- Cyan (0%)
- Magenta (15%)
- Yellow (16%)
- Black (15%)



- Cyan (15%)
- Magenta (28%)
- Yellow (29%)

Brightness & Saturation Gradients

These gradients show how the Decimal color 14203061 changes by changing the brightness by 10 percent. The first figure shows a shift by +10% for each color and the second figure -10%.

Similar to the brightness gradients but the following saturation gradients show a change of the Decimal color 14203061 by changing the saturation by 10% instead.

 14203061


 14203061

16777215

 12361114

 16773357

 10584960

 8809063

 7164495

 5519928

 3941667

 2494477

 0

 14203061

 14203061

■ 14197919

■ 14208203

■ 14193034

■ 14213088

■ 14187892

■ 14218230

■ 14182751

■ 14221311

■ 14177609

■ 14172723

■ 14167582

■ 14162440

■ 14160640

Harmonies

Analogous

The Analogous color harmony consists of three colors that are next to each other on the color wheel.



14072001



14203061



13875884

Triad

The Triadic color harmony groups three colors that are evenly spaced from another and form a triangle on the color wheel.



14203061



11584947



11714774

Complementary

The Complementary color scheme is a pair of colors which are on the opposite of each other on the color wheel.



14203061



11916760

Split Complementary

Split-complementary colors differ from the complementary color scheme. The scheme consists of three colors, the original color and two neighbors of the complement color.



10994898



14203061



10929854

Square

The Square scheme is like the rectangle color scheme, but the four colors are evenly spaced on the color wheel.



14203061



12436139



10667721



12697043

Rectangle

The Rectangle color scheme consists of four colors that form a rectangle on the color wheel.



14203061



13483433



10667721



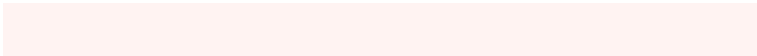
11453141

Sweetspot

The Sweet Spot groups the original color and five complimentary colors.



14203061



16774130



14202325



8419704



0



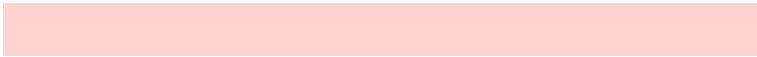
8421504

Same Dimension

The Same Dimension uses a secret algorithm to generate beautiful new colors.



14203061



16765903



14207413



7037280



11210496



2819072

Inverse Universe

The Inverse Universe completely reimagines the original color for something new.



11916760



13630463



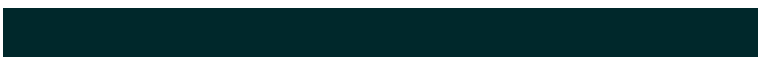
11912408



6318699



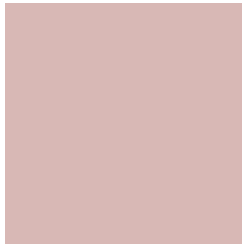
40107



10283

Previews

White Background



This preview shows how the Decimal color 14203061 looks on a white background.

Color Contrast Check

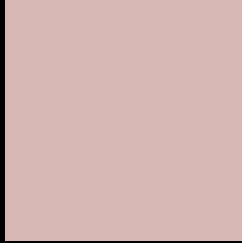
Large Text (above 18pt) WCAG AA × Fail

Any Text WCAG AA × Fail

Large Text (above 18pt) WCAG AAA × Fail

Any Text WCAG AAA × Fail

Black Background



This preview shows how the Decimal color 14203061 looks on a black background.

Color Contrast Check

Large Text (above 18pt) WCAG AA ✓ Pass

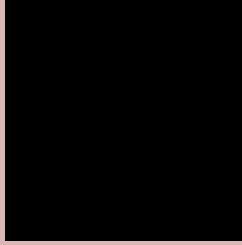
Any Text WCAG AA ✓ Pass

Large Text (above 18pt) WCAG AAA ✓ Pass

Any Text WCAG AAA ✓ Pass

If you want to check with other color combinations, try the [Color Contrast Checker](#).

Decimal 14203061 Background



This preview shows how black text looks on a background with the Decimal color 14203061.



This preview shows how white text looks on a background with the Decimal color 14203061.

Color Blindness Simulation

Color vision deficiency is a very complex topic, and I could not describe the different causes any better than Wikipedia does, so if you want to learn more, you should check out their [article about color blindness](#).


Dichromacy



Original Color
14203061

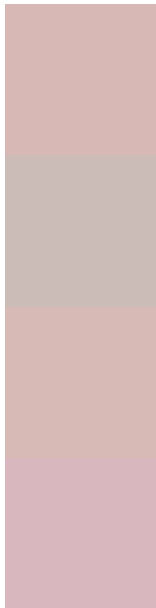
Protanopia
12894137

Deuteranopia
14072245



Tritanopia
14333636

Trichromacy



Original Color
14203061

Protanomaly
13352120

Deuteranomaly
14137781

Tritanomaly
14268351

Monochromacy



Original Color
14203061

Achromatopsia
12698049

Achromatomaly
13221565

CSS Examples

Text

The CSS property to change the color of the text to Decimal 14203061 is called "color". The color property can be set on classes, ids or directly on the HTML element.

This example shows how text in the color #D8B8B5 looks like.

```
.text, #text, p{  
    color:#D8B8B5  
}
```

If you want to add a text shadow in that color use the text-shadow property, you can generate a text shadow directly with our [CSS Text Shadow Generator](#).

Here you see how black text with a 4 pixel #D8B8B5 colored shadow looks like.

```
.shadow{ text-shadow: 4px 4px 2px #D8B8B5
}
```

Border

The CSS property to change the border of an element to Decimal 14203061 is called "border". The border property can be set on classes, ids or directly on the HTML element.

This example shows the color as border, it can be applied via the CSS property "border" or "border-color".

```
.border, #border, table{ border:4px solid
#D8B8B5 }
```

If only the border color should be changed use the property `border-color`.

```
.border{ border-color:#D8B8B5 }
```

If you want to add a box shadow in that color use:

Here you see how a box with a 4 pixel #D8B8B5 colored shadow looks like.

```
.boxshadow{ -moz-box-shadow:4px 4px 4px  
4px #D8B8B5; -webkit-box-shadow:4px 4px  
4px 4px #D8B8B5; box-shadow:4px 4px 4px  
4px #D8B8B5 }
```

Background

The CSS property to change the background color of an element to Decimal 14203061 is called "background". The background property can be set on classes, ids or directly on the HTML element.

```
.background, #background, body{  
background:#D8B8B5 }
```

If only the background color should be changed can be used:

```
.background{ background-color:#D8B8B5 }
```

This example shows the color as background, it is applied via the CSS property "background".

To optimize and compress your CSS code, you can use our [online CSS compressor and optimizer](#) based on csstidy. If you want to create a linear or radial gradient as background or border, check our [CSS Gradient Generator](#).

Hey! You found this booklet interesting? Support Converting Colors with the new Membership Option!

The pro membership hides all ads, plus gives you double the colors in the color bucket, and more awesome pro features!

[Learn more, Memberships starting at \\$2.50/m!](#)

**Follow me
on Twitter!**

@ConvertingColor