

Converting Colors

Decimal(14203552)

Have a look what the booklet for
Decimal(14203552) contains.

Decimal(14203552)	3
<i>Conversions</i>	4
<i>Details</i>	6
<i>Harmonies</i>	11
<i>Previews</i>	23
<i>Color Blindness Simulation</i>	26
<i>CSS Examples</i>	29

Color

Decimal(14203552)

Conversions

Conversions Part 1

Format	Color
Hex	D8BAA0
RGB	216, 186, 160
RGB Percent	85%, 73%, 63%
CMY	0.1529, 0.2706, 0.3725
CMYK	0.00, 0.14, 0.26, 0.15
HSL	28°, 42%, 74%
HSV	28°, 26%, 85%
XYZ	52.2230, 52.2548, 40.5914
YIQ	192.0060, 26.2260, -1.7260

Conversions

Conversions Part 2

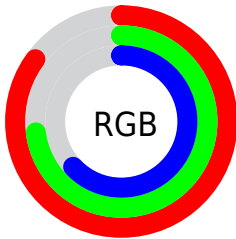
Format	Color
RYB	216, 209, 160
Decimal	14203552
CIELab	77.43, 6.79, 17.15
CIELCh	77, 18.446, 68.387
Yxy	52.2548, 0.3600, 0.3602
Android (android.graphics.Color)	4292393632 (0xFFD8BAA0)
YUV	192.0060, -15.7790, 21.0427
Hunter-Lab	72.2875, 2.4515, 17.3082

Details

The Decimal color **14203552** is a light color, and the websafe version is hex **CCCC99**. A complement of this color would be **10534616**, and the grayscale version is **12632256**.

A 20% lighter version of the original color is **16773847**, and **10519916** is the 20% darker color. If you saturate the color by 10%, you get **14200458**, and if you desaturate by 10%, it is **14206646**.

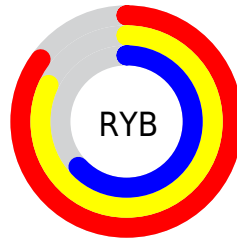
Distribution



Red (85%)

Green (73%)

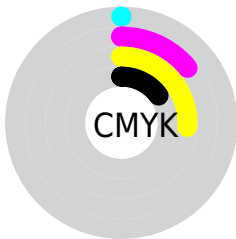
Blue (63%)



Red (85%)

Yellow (82%)

Blue (63%)

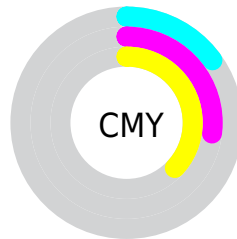


Cyan (0%)

Magenta (14%)

Yellow (26%)

Black (15%)



Cyan (15%)

Magenta (27%)

Yellow (37%)

Brightness & Saturation Gradients

These gradients show how the Decimal color 14203552 changes by changing the brightness by 10 percent. The first figure shows a shift by +10% for each color and the second figure -10%.

Similar to the brightness gradients but the following saturation gradients show a change of the Decimal color 14203552 by changing the saturation by 10% instead.

 14203552

 14203552


16777215

 12361606

 16773847

 10519916

 16777203

 8809556

 7099197

 5454887

 3876626

 2429440

 0

 14203552

 14203552

 14200458

 14206646

 14197621

 14209483

 14194527

 14212577

 14191690

 14215414

 14188596

 14218495

 14185758

 14221311

 14182665

 14181376

Harmonies

Analogous

The Analogous color harmony consists of three colors that are next to each other on the color wheel.



14857643



14203552



13156510

Triad

The Triadic color harmony groups three colors that are evenly spaced from another and form a triangle on the color wheel.



14203552



9816516



13154778

Complementary

The Complementary color scheme is a pair of colors which are on the opposite of each other on the color wheel.



14203552



10534616

Split Complementary

Split-complementary colors differ from the complementary color scheme. The scheme consists of three colors, the original color and two neighbors of the complement color.



11714529



14203552



9685204

Square

The Square scheme is like the rectangle color scheme, but the four colors are evenly spaced on the color wheel.



14203552



10668210



10405087



14333388

Rectangle

The Rectangle color scheme consists of four colors that form a rectangle on the color wheel.



14203552



12305313



10405087



12696541

Sweetspot

The Sweet Spot groups the original color and five complimentary colors.



14203552



16774379



14196927



8419699



0



8421504

Same Dimension

The Same Dimension uses a secret algorithm to generate beautiful new colors.



14203552



16766384



14210464



7038304



11226880



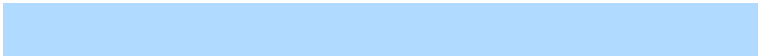
2823168

Inverse Universe

The Inverse Universe completely reimagines the original color for something new.



10534616



11590399



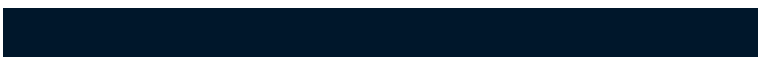
10527704



6317675



23723



5931

Previews

White Background



This preview shows how the Decimal color 14203552 looks on a white background.

Color Contrast Check

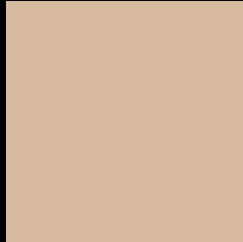
Large Text (above 18pt) WCAG AA × Fail

Any Text WCAG AA × Fail

Large Text (above 18pt) WCAG AAA × Fail

Any Text WCAG AAA × Fail

Black Background



This preview shows how the Decimal color 14203552 looks on a black background.

Color Contrast Check

Large Text (above 18pt) WCAG AA ✓ Pass

Any Text WCAG AA ✓ Pass

Large Text (above 18pt) WCAG AAA ✓ Pass

Any Text WCAG AAA ✓ Pass

If you want to check with other color combinations, try the [Color Contrast Checker](#).

Decimal 14203552 Background



This preview shows how black text looks on a background with the Decimal color 14203552.



This preview shows how white text looks on a background with the Decimal color 14203552.

Color Blindness Simulation

Color vision deficiency is a very complex topic, and I could not describe the different causes any better than Wikipedia does, so if you want to learn more, you should check out their [article about color blindness](#).

Dichromacy



Original Color
14203552

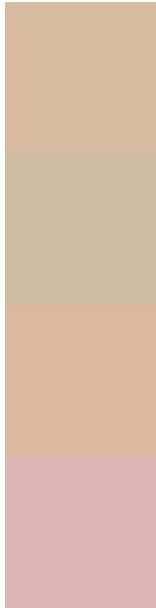
Protanopia
13221794

Deuteranopia
14530720



Tritanopia
14464451

Trichromacy



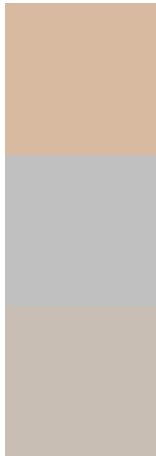
Original Color
14203552

Protanomaly
13548961

Deuteranomaly
14399904

Tritanomaly
14399414

Monochromacy



Original Color
14203552

Achromatopsia
12632256

Achromatomaly
13221556

CSS Examples

Text

The CSS property to change the color of the text to Decimal 14203552 is called "color". The color property can be set on classes, ids or directly on the HTML element.

This example shows how text in the color #D8BAA0 looks like.

```
.text, #text, p{  
    color:#D8BAA0  
}
```

If you want to add a text shadow in that color use the text-shadow property, you can generate a text shadow directly with our [CSS Text Shadow Generator](#).

Here you see how black text with a 4 pixel #D8BAA0 colored shadow looks like.

```
.shadow{ text-shadow: 4px 4px 2px #D8BAA0
}
```

Border

The CSS property to change the border of an element to Decimal 14203552 is called "border". The border property can be set on classes, ids or directly on the HTML element.

This example shows the color as border, it can be applied via the CSS property "border" or "border-color".

```
.border, #border, table{ border:4px solid
#D8BAA0 }
```

If only the border color should be changed use the property `border-color`.

```
.border{ border-color:#D8BAA0 }
```

If you want to add a box shadow in that color use:

Here you see how a box with a 4 pixel #D8BAA0 colored shadow looks like.

```
.boxshadow{ -moz-box-shadow:4px 4px 4px  
4px #D8BAA0; -webkit-box-shadow:4px 4px  
4px 4px #D8BAA0; box-shadow:4px 4px 4px  
4px #D8BAA0 }
```

Background

The CSS property to change the background color of an element to Decimal 14203552 is called "background". The background property can be set on classes, ids or directly on the HTML element.

```
.background, #background, body{  
background:#D8BAA0 }
```

If only the background color should be changed can be used:

```
.background{ background-color:#D8BAA0 }
```

This example shows the color as background, it is applied via the CSS property "background".

To optimize and compress your CSS code, you can use our [online CSS compressor and optimizer](#) based on csstidy. If you want to create a linear or radial gradient as background or border, check our [CSS Gradient Generator](#).

Hey! You found this booklet interesting? Support Converting Colors with the new Membership Option!

The pro membership hides all ads, plus gives you double the colors in the color bucket, and more awesome pro features!

[Learn more, Memberships starting at \\$2.50/m!](#)

**Follow me
on Twitter!**

@ConvertingColor