

# Converting Colors

Decimal(14204063)

Have a look what the booklet for  
Decimal(14204063) contains.

<b>Decimal(14204063)</b> .....	3
<i><b>Conversions</b></i> .....	4
<i><b>Details</b></i> .....	6
<i><b>Harmonies</b></i> .....	11
<i><b>Previews</b></i> .....	23
<i><b>Color Blindness Simulation</b></i> .....	26
<i><b>CSS Examples</b></i> .....	29

# **Color**

**Decimal(14204063)**

# Conversions

## Conversions Part 1

Format	Color
Hex	D8BC9F
RGB	216, 188, 159
RGB Percent	85%, 74%, 62%
CMY	0.1529, 0.2627, 0.3765
CMYK	0.00, 0.13, 0.26, 0.15
HSL	31°, 42%, 74%
HSV	31°, 26%, 85%
XYZ	52.5601, 53.0686, 40.2739
YIQ	193.0660, 25.9970, -3.0830

# Conversions

## Conversions Part 2

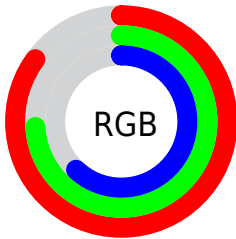
Format	Color
R <sub>Y</sub> B	214, 216, 159
Decimal	14204063
CIE Lab	77.92, 5.59, 18.36
CIE LCh	78, 19.191, 73.053
Yxy	53.0686, 0.3602, 0.3637
Android (android.graphics.Color)	4292394143 (0xFFD8BC9F)
YUV	193.0660, -16.7945, 20.1131
Hunter-Lab	72.8482, 1.3038, 18.2154

# Details

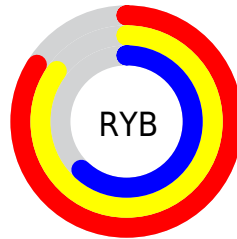
The Decimal color **14204063** is a light color, and the websafe version is hex **CCCC99**. A complement of this color would be **10468312**, and the grayscale version is **12698049**.

A 20% lighter version of the original color is **16774358**, and **10520427** is the 20% darker color. If you saturate the color by 10%, you get **14201225**, and if you desaturate by 10%, it is **14206901**.

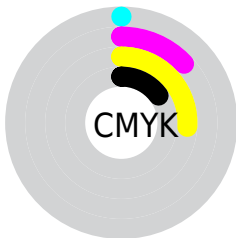
# Distribution



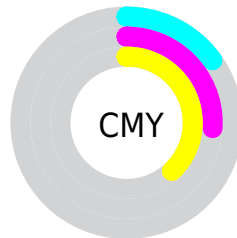
- Red (85%)
- Green (74%)
- Blue (62%)



- Red (84%)
- Yellow (85%)
- Blue (62%)



- Cyan (0%)
- Magenta (13%)
- Yellow (26%)
- Black (15%)



- Cyan (15%)
- Magenta (26%)
- Yellow (38%)

# Brightness & Saturation Gradients

These gradients show how the Decimal color 14204063 changes by changing the brightness by 10 percent. The first figure shows a shift by +10% for each color and the second figure -10%.

Similar to the brightness gradients but the following saturation gradients show a change of the Decimal color 14204063 by changing the saturation by 10% instead.



 14204063

 14204063

16777215

 12362117

 16774358

 10520427

 16777202

 8810067

 7099708

 5455398

 3876881

 2429952

 0

 14204063

 14204063

 14201225

 14206901

 14198644

 14209482

 14195806

 14212320

 14193225

 14214901

 14190387

 14217727

 14187549

 14220543

 14184968

 14221311

 14183936

# Harmonies

## Analogous

The Analogous color harmony consists of three colors that are next to each other on the color wheel.



14923689



14204063



13025950

# Triad

The Triadic color harmony groups three colors that are evenly spaced from another and form a triangle on the color wheel.



14204063



9685960



13482715

# Complementary

The Complementary color scheme is a pair of colors which are on the opposite of each other on the color wheel.



14204063



10468312

# Split Complementary

Split-complementary colors differ from the complementary color scheme. The scheme consists of three colors, the original color and two neighbors of the complement color.



12042467



14204063



9685464

# Square

The Square scheme is like the rectangle color scheme, but the four colors are evenly spaced on the color wheel.



14204063



10472118



10601954



14595531

# Rectangle

The Rectangle color scheme consists of four colors that form a rectangle on the color wheel.



14204063



12174755



10601954



13024222

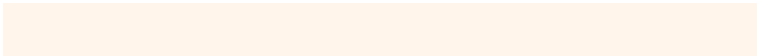


# Sweetspot

The Sweet Spot groups the original color and five complimentary colors.



14204063



16774635



14196668



8419699



0



8421504



# Same Dimension

The Same Dimension uses a secret algorithm to generate beautiful new colors.



14204063



16766893



14211231



7038560



11228928



2823680

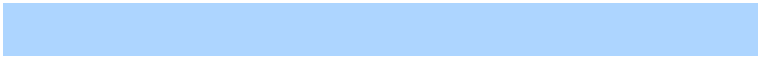


# Inverse Universe

The Inverse Universe completely reimagines the original color for something new.



10468312



11392511



10461144



6317675



21675



5419



# Previews

## White Background



This preview shows how the Decimal color 14204063 looks on a white background.

## Color Contrast Check

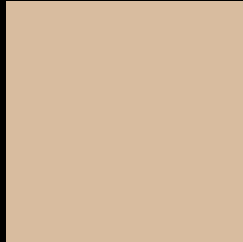
Large Text (above 18pt) WCAG AA × Fail

Any Text WCAG AA × Fail

Large Text (above 18pt) WCAG AAA × Fail

Any Text WCAG AAA × Fail

# Black Background



This preview shows how the Decimal color 14204063 looks on a black background.

## Color Contrast Check

Large Text (above 18pt) WCAG AA ✓ Pass

Any Text WCAG AA ✓ Pass

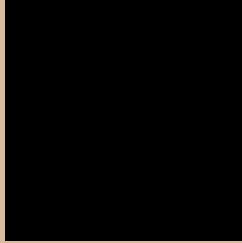
Large Text (above 18pt) WCAG AAA ✓ Pass

Any Text WCAG AAA ✓ Pass

If you want to check with other color combinations, try the [Color Contrast Checker](#).



## Decimal 14204063 Background



This preview shows how black text looks on a background with the Decimal color 14204063.



This preview shows how white text looks on a background with the Decimal color 14204063.

# Color Blindness Simulation

Color vision deficiency is a very complex topic, and I could not describe the different causes any better than Wikipedia does, so if you want to learn more, you should check out their [article about color blindness](#).


## Dichromacy



**Original Color**  
14204063

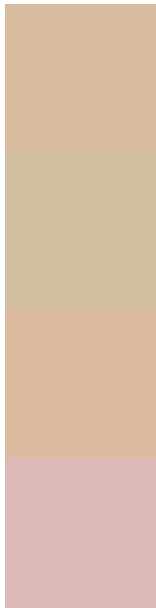
**Protanopia**  
13353121

**Deuteranopia**  
14662048



**Tritanopia**  
14464965

# Trichromacy



**Original Color**  
14204063

**Protanomaly**  
13680544

**Deuteranomaly**  
14465696

**Tritanomaly**  
14399927

# Monochromacy



**Original Color**  
14204063

**Achromatopsia**  
12698049

**Achromatomaly**  
13221813

# CSS Examples

## Text

The CSS property to change the color of the text to Decimal 14204063 is called "color". The color property can be set on classes, ids or directly on the HTML element.

This example shows how text in the color #D8BC9F looks like.

```
.text, #text, p{  
    color:#D8BC9F  
}
```

If you want to add a text shadow in that color use the text-shadow property, you can generate a text shadow directly with our [CSS Text Shadow Generator](#).

Here you see how black text with a 4 pixel #D8BC9F colored shadow looks like.

```
.shadow{ text-shadow: 4px 4px 2px #D8BC9F
}
```

## Border

The CSS property to change the border of an element to Decimal 14204063 is called "border". The border property can be set on classes, ids or directly on the HTML element.

This example shows the color as border, it can be applied via the CSS property "border" or "border-color".

```
.border, #border, table{ border:4px solid
#D8BC9F }
```

If only the border color should be changed use the property `border-color`.

```
.border{ border-color:#D8BC9F }
```

If you want to add a box shadow in that color use:

Here you see how a box with a 4 pixel #D8BC9F colored shadow looks like.

```
.boxshadow{ -moz-box-shadow:4px 4px 4px  
4px #D8BC9F; -webkit-box-shadow:4px 4px  
4px 4px #D8BC9F; box-shadow:4px 4px 4px  
4px #D8BC9F }
```

# Background

The CSS property to change the background color of an element to Decimal 14204063 is called "background". The background property can be set on classes, ids or directly on the HTML element.

```
.background, #background, body{  
background:#D8BC9F }
```

If only the background color should be changed can be used:

```
.background{ background-color:#D8BC9F }
```

This example shows the color as background, it is applied via the CSS property "background".

To optimize and compress your CSS code, you can use our [online CSS compressor and optimizer](#) based on csstidy. If you want to create a linear or radial gradient as background or border, check our [CSS Gradient Generator](#).



Hey! You found this booklet interesting? Support Converting Colors with the new Membership Option!

The pro membership hides all ads, plus gives you double the colors in the color bucket, and more awesome pro features!

**[Learn more, Memberships starting at \\$2.50/m!](#)**

**Follow me  
on Twitter!**

@ConvertingColor