

# Converting Colors

Decimal(14204326)

Have a look what the booklet for  
Decimal(14204326) contains.

|  |    |
|--|----|
| <b>Decimal(14204326)</b> .....                 | 3  |
| <i><b>Conversions</b></i> .....                | 4  |
| <i><b>Details</b></i> .....                    | 6  |
| <i><b>Harmonies</b></i> .....                  | 11 |
| <i><b>Previews</b></i> .....                   | 23 |
| <i><b>Color Blindness Simulation</b></i> ..... | 26 |
| <i><b>CSS Examples</b></i> .....               | 29 |

# **Color**

**Decimal(14204326)**

# Conversions

## Conversions Part 1

| Format      | Color                      |
|-------------|----------------------------|
| Hex         | D8BDA6                     |
| RGB         | 216, 189, 166              |
| RGB Percent | 85%, 74%, 65%              |
| CMY         | 0.1529, 0.2588, 0.3490     |
| CMYK        | 0.00, 0.12, 0.23, 0.15     |
| HSL         | 28°, 39%, 75%              |
| HSV         | 28°, 23%, 85%              |
| XYZ         | 53.3994, 53.7473, 43.6362  |
| YIQ         | 194.4510, 23.4750, -1.4290 |

# Conversions

## Conversions Part 2

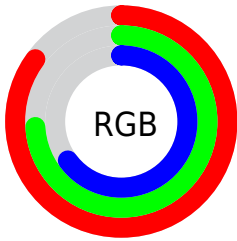
| Format                              | Color                          |
|-------------------------------------|--------------------------------|
| RYP                                 | 216, 209, 166                  |
| Decimal                             | 14204326                       |
| CIELab                              | 78.31, 6.05, 15.16             |
| CIELCh                              | 78, 16.318, 68.244             |
| Yxy                                 | 53.7473, 0.3541,<br>0.3565     |
| Android<br>(android.graphics.Color) | 4292394406<br>(0xFFD8BDA6)     |
| YUV                                 | 194.4510, -14.0263,<br>18.8985 |
| Hunter-Lab                          | 73.3125, 1.7190,<br>16.0289    |

# Details

The Decimal color **14204326** is a light color, and the websafe version is hex **FFCCCC**. A complement of this color would be **10928600**, and the grayscale version is **12829635**.

A 20% lighter version of the original color is **16774621**, and **10586226** is the 20% darker color. If you saturate the color by 10%, you get **14201232**, and if you desaturate by 10%, it is **14207420**.

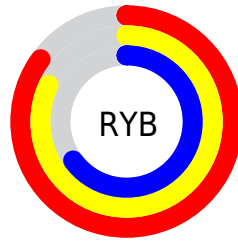
# Distribution



Red (85%)

Green (74%)

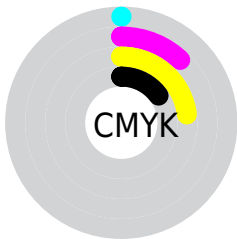
Blue (65%)



Red (85%)

Yellow (82%)

Blue (65%)

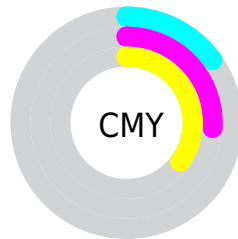


Cyan (0%)

Magenta (12%)

Yellow (23%)

Black (15%)



Cyan (15%)

Magenta (26%)

Yellow (35%)

# Brightness & Saturation Gradients

These gradients show how the Decimal color 14204326 changes by changing the brightness by 10 percent. The first figure shows a shift by +10% for each color and the second figure -10%.

Similar to the brightness gradients but the following saturation gradients show a change of the Decimal color 14204326 by changing the saturation by 10% instead.



 14204326

 14204326

16777215

 12362380

 16774621

 10586226

 16777210

 8810074

 7099970

 5455660

 3877143

 2495488

 0

 14204326

 14204326

 14201232

 14207420

 14198395

 14210257

 14195301

 14213351

 14192208

 14216444

 14189370

 14219263

 14186276

 14221311

 14183183

 14181120

# Harmonies

## Analogous

The Analogous color harmony consists of three colors that are next to each other on the color wheel.



14793136



14204326



13288100

# Triad

The Triadic color harmony groups three colors that are evenly spaced from another and form a triangle on the color wheel.



14204326



10341317



13286874

# Complementary

The Complementary color scheme is a pair of colors which are on the opposite of each other on the color wheel.



14204326



10928600

# Split Complementary

Split-complementary colors differ from the complementary color scheme. The scheme consists of three colors, the original color and two neighbors of the complement color.



11977439



14204326



10210004

# Square

The Square scheme is like the rectangle color scheme, but the four colors are evenly spaced on the color wheel.



14204326



11061942



10864349



14268877

# Rectangle

The Rectangle color scheme consists of four colors that form a rectangle on the color wheel.



14204326



12502439



10864349



12893916

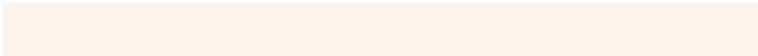


# Sweetspot

The Sweet Spot groups the original color and five complimentary colors.



14204326



16774637



14198466



8419957



0



8421504



# Same Dimension

The Same Dimension uses a secret algorithm to generate beautiful new colors.



14204326



16767160



14210726



7038304



11226880



2823168

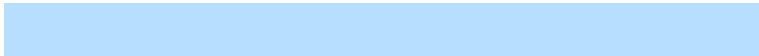


# Inverse Universe

The Inverse Universe completely reimagines the original color for something new.



10928600



12115711



10922456



6317675



23723



5931



# Previews

## White Background



This preview shows how the Decimal color 14204326 looks on a white background.

## Color Contrast Check

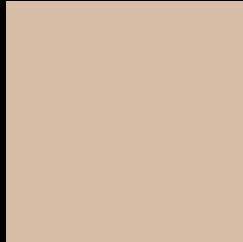
Large Text (above 18pt) WCAG AA × Fail

Any Text WCAG AA × Fail

Large Text (above 18pt) WCAG AAA × Fail

Any Text WCAG AAA × Fail

# Black Background



This preview shows how the Decimal color 14204326 looks on a black background.

## Color Contrast Check

Large Text (above 18pt) WCAG AA ✓ Pass

Any Text WCAG AA ✓ Pass

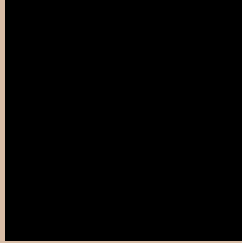
Large Text (above 18pt) WCAG AAA ✓ Pass

Any Text WCAG AAA ✓ Pass

If you want to check with other color combinations, try the [Color Contrast Checker](#).



## Decimal 14204326 Background



This preview shows how black text looks on a background with the Decimal color 14204326.



This preview shows how white text looks on a background with the Decimal color 14204326.

# Color Blindness Simulation

Color vision deficiency is a very complex topic, and I could not describe the different causes any better than Wikipedia does, so if you want to learn more, you should check out their [article about color blindness](#).

## Dichromacy





**Tritanopia**  
14465223

# Trichromacy



**Original Color**  
14204326

**Protanomaly**  
13680807

**Deuteranomaly**  
14466214

**Tritanomaly**  
14400187

# Monochromacy



**Original Color**  
14204326

**Achromatopsia**  
12763842

**Achromatomaly**  
13287608

# CSS Examples

## Text

The CSS property to change the color of the text to Decimal 14204326 is called "color". The color property can be set on classes, ids or directly on the HTML element.

This example shows how text in the color #D8BDA6 looks like.

```
.text, #text, p{  
    color:#D8BDA6  
}
```

If you want to add a text shadow in that color use the text-shadow property, you can generate a text shadow directly with our [CSS Text Shadow Generator](#).

Here you see how black text with a 4 pixel #D8BDA6 colored shadow looks like.

```
.shadow{ text-shadow: 4px 4px 2px #D8BDA6  
}
```

## Border

The CSS property to change the border of an element to Decimal 14204326 is called "border". The border property can be set on classes, ids or directly on the HTML element.

This example shows the color as border, it can be applied via the CSS property "border" or "border-color".

```
.border, #border, table{ border:4px solid  
#D8BDA6 }
```

If only the border color should be changed use the property `border-color`.

```
.border{ border-color:#D8BDA6 }
```

If you want to add a box shadow in that color use:

Here you see how a box with a 4 pixel #D8BDA6 colored shadow looks like.

```
.boxshadow{ -moz-box-shadow:4px 4px 4px  
4px #D8BDA6; -webkit-box-shadow:4px 4px  
4px 4px #D8BDA6; box-shadow:4px 4px 4px  
4px #D8BDA6 }
```

# Background

The CSS property to change the background color of an element to Decimal 14204326 is called "background". The background property can be set on classes, ids or directly on the HTML element.

```
.background, #background, body{  
background:#D8BDA6 }
```

If only the background color should be changed can be used:

```
.background{ background-color:#D8BDA6 }
```

This example shows the color as background, it is applied via the CSS property "background".

To optimize and compress your CSS code, you can use our [online CSS compressor and optimizer](#) based on csstidy. If you want to create a linear or radial gradient as background or border, check our [CSS Gradient Generator](#).



Hey! You found this booklet interesting? Support Converting Colors with the new Membership Option!

The pro membership hides all ads, plus gives you double the colors in the color bucket, and more awesome pro features!

**[Learn more, Memberships starting at \\$2.50/m!](#)**

**Follow me  
on Twitter!**

@ConvertingColor