

Converting Colors

Decimal(14204865)

Have a look what the booklet for
Decimal(14204865) contains.

| | |
|--|----|
| Decimal(14204865) | 3 |
| <i>Conversions</i> | 4 |
| <i>Details</i> | 6 |
| <i>Harmonies</i> | 11 |
| <i>Previews</i> | 23 |
| <i>Color Blindness Simulation</i> | 26 |
| <i>CSS Examples</i> | 29 |

Color

Decimal(14204865)

Conversions

Conversions Part 1

| Format | Color |
|-------------|---------------------------|
| Hex | D8BFC1 |
| RGB | 216, 191, 193 |
| RGB Percent | 85%, 75%, 76% |
| CMY | 0.1529, 0.2510, 0.2431 |
| CMYK | 0.00, 0.12, 0.11, 0.15 |
| HSL | 355°, 24%, 80% |
| HSV | 355°, 12%, 85% |
| XYZ | 56.5753, 55.7108, 58.2235 |
| YIQ | 198.7030, 14.2580, 5.9220 |

Conversions

Conversions Part 2

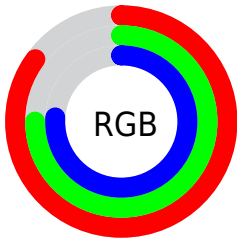
| Format | Color |
|-------------------------------------|-------------------------------|
| R_{YB} | 216, 191, 193 |
| Decimal | 14204865 |
| CIE _{Lab} | 79.45, 9.18, 2.23 |
| CIE _{LCh} | 79, 9.447, 13.674 |
| Yxy | 55.7108, 0.3318, 0.3267 |
| Android (android.graphics.Color) | 4292394945 (0xFFD8BFC1) |
| YUV | 198.7030, -2.8116, 15.1695 |
| Hunter-Lab | 74.6397, 4.6800, 5.9979 |

Details

The Decimal color **14204865** is a light color, and the websafe version is hex **CCCCCC**. A complement of this color would be **12572886**, and the grayscale version is **13092807**.

A 20% lighter version of the original color is **16775161**, and **10586764** is the 20% darker color. If you saturate the color by 10%, you get **14199213**, and if you desaturate by 10%, it is **14210517**.

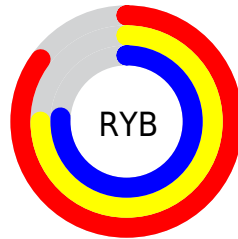
Distribution



Red (85%)

Green (75%)

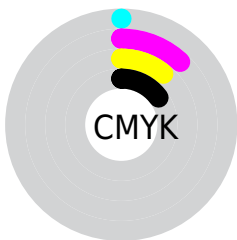
Blue (76%)



Red (85%)

Yellow (75%)

Blue (76%)

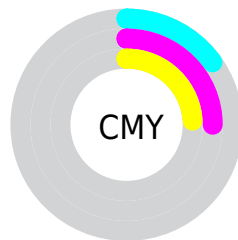


Cyan (0%)

Magenta (12%)

Yellow (11%)

Black (15%)



Cyan (15%)

Magenta (25%)

Yellow (24%)

Brightness & Saturation Gradients

These gradients show how the Decimal color 14204865 changes by changing the brightness by 10 percent. The first figure shows a shift by +10% for each color and the second figure -10%.

Similar to the brightness gradients but the following saturation gradients show a change of the Decimal color 14204865 by changing the saturation by 10% instead.

 14204865

 14204865

16777215

 12362918

 16775161

 10586764

 8876146

 7166042

 5587010

 4008492

 2561560

 1048576

 0

 14204865

 14204865

 14199213

 14210517

 14193817

 14215913


 14188165


 14221309


 14182770


 14221311

 14177118

 14171466

 14166070

 14160418

 14155793

Harmonies

Analogous

The Analogous color harmony consists of three colors that are next to each other on the color wheel.



13942730



14204865



14139577

Triad

The Triadic color harmony groups three colors that are evenly spaced from another and form a triangle on the color wheel.



14204865



12503224



12044245

Complementary

The Complementary color scheme is a pair of colors which are on the opposite of each other on the color wheel.



14204865



12572886

Split Complementary

Split-complementary colors differ from the complementary color scheme. The scheme consists of three colors, the original color and two neighbors of the complement color.



11586001



14204865



11913920

Square

The Square scheme is like the rectangle color scheme, but the four colors are evenly spaced on the color wheel.



14204865



13157812



11586249



12698838

Rectangle

The Rectangle color scheme consists of four colors that form a rectangle on the color wheel.



14204865



13877941



11586249



11847892

Sweetspot

The Sweet Spot groups the original color and five complimentary colors.



14204865



16775160



14073816



8419963



0



8421504

Same Dimension

The Same Dimension uses a secret algorithm to generate beautiful new colors.



14204865



16767966



14207423



7037025



11206670



2818051

Inverse Universe

The Inverse Universe completely reimagines the original color for something new.



14204865



16767966



12570328



7037025



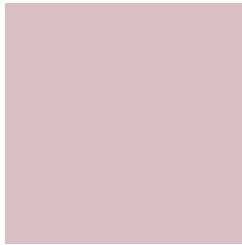
11206670



2818051

Previews

White Background



This preview shows how the Decimal color 14204865 looks on a white background.

Color Contrast Check

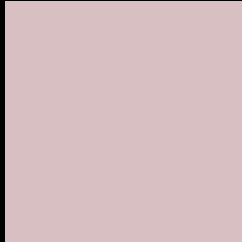
Large Text (above 18pt) WCAG AA × Fail

Any Text WCAG AA × Fail

Large Text (above 18pt) WCAG AAA × Fail

Any Text WCAG AAA × Fail

Black Background



This preview shows how the Decimal color 14204865 looks on a black background.

Color Contrast Check

Large Text (above 18pt) WCAG AA ✓ Pass

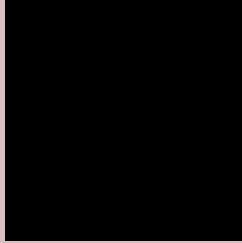
Any Text WCAG AA ✓ Pass

Large Text (above 18pt) WCAG AAA ✓ Pass

Any Text WCAG AAA ✓ Pass

If you want to check with other color combinations, try the [Color Contrast Checker](#).

Decimal 14204865 Background



This preview shows how black text looks on a background with the Decimal color 14204865.




This preview shows how white text looks on a background with the Decimal color 14204865.

Color Blindness Simulation

Color vision deficiency is a very complex topic, and I could not describe the different causes any better than Wikipedia does, so if you want to learn more, you should check out their [article about color blindness](#).

Dichromacy





Tritanopia
14269900

Trichromacy



Original Color
14204865

Protanomaly
13550275

Deuteranomaly
14270401

Tritanomaly
14270152

Monochromacy



Original Color
14204865

Achromatopsia
13092807

Achromatomaly
13485253

CSS Examples

Text

The CSS property to change the color of the text to Decimal 14204865 is called "color". The color property can be set on classes, ids or directly on the HTML element.

This example shows how text in the color #D8BFC1 looks like.

```
.text, #text, p{  
    color:#D8BFC1  
}
```

If you want to add a text shadow in that color use the text-shadow property, you can generate a text shadow directly with our [CSS Text Shadow Generator](#).

Here you see how black text with a 4 pixel #D8BFC1 colored shadow looks like.

```
.shadow{ text-shadow: 4px 4px 2px #D8BFC1
}
```

Border

The CSS property to change the border of an element to Decimal 14204865 is called "border". The border property can be set on classes, ids or directly on the HTML element.

This example shows the color as border, it can be applied via the CSS property "border" or "border-color".

```
.border, #border, table{ border:4px solid
#D8BFC1 }
```

If only the border color should be changed use the property `border-color`.

```
.border{ border-color:#D8BFC1 }
```

If you want to add a box shadow in that color use:

Here you see how a box with a 4 pixel #D8BFC1 colored shadow looks like.

```
.boxshadow{ -moz-box-shadow:4px 4px 4px  
4px #D8BFC1; -webkit-box-shadow:4px 4px  
4px 4px #D8BFC1; box-shadow:4px 4px 4px  
4px #D8BFC1 }
```

Background

The CSS property to change the background color of an element to Decimal 14204865 is called "background". The background property can be set on classes, ids or directly on the HTML element.

```
.background, #background, body{  
background:#D8BFC1 }
```

If only the background color should be changed can be used:

```
.background{ background-color:#D8BFC1 }
```

This example shows the color as background, it is applied via the CSS property "background".

To optimize and compress your CSS code, you can use our [online CSS compressor and optimizer](#) based on csstidy. If you want to create a linear or radial gradient as background or border, check our [CSS Gradient Generator](#).

Hey! You found this booklet interesting? Support Converting Colors with the new Membership Option!

The pro membership hides all ads, plus gives you double the colors in the color bucket, and more awesome pro features!

[Learn more, Memberships starting at \\$2.50/m!](#)

**Follow me
on Twitter!**

@ConvertingColor