

Converting Colors

Decimal(14205100)

Have a look what the booklet for
Decimal(14205100) contains.

Decimal(14205100)	3
<i>Conversions</i>	4
<i>Details</i>	6
<i>Harmonies</i>	11
<i>Previews</i>	23
<i>Color Blindness Simulation</i>	26
<i>CSS Examples</i>	29

Color

Decimal(14205100)

Conversions

Conversions Part 1

Format	Color
Hex	D8C0AC
RGB	216, 192, 172
RGB Percent	85%, 75%, 67%
CMY	0.1529, 0.2471, 0.3255
CMYK	0.00, 0.11, 0.20, 0.15
HSL	27°, 36%, 76%
HSV	27°, 20%, 85%
XYZ	54.6149, 55.2768, 46.8207
YIQ	196.8960, 20.7240, -1.1320

Conversions

Conversions Part 2

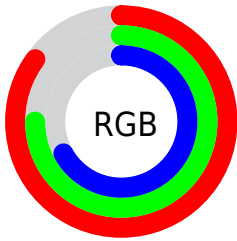
Format	Color
R _Y B	216, 209, 172
Decimal	14205100
CIE Lab	79.20, 5.34, 13.18
CIE LCh	79, 14.220, 67.963
Yxy	55.2768, 0.3485, 0.3527
Android (android.graphics.Color)	4292395180 (0xFFD8C0AC)
YUV	196.8960, -12.2737, 16.7542
Hunter-Lab	74.3483, 1.0132, 14.7061

Details

The Decimal color **14205100** is a light color, and the websafe version is hex **CCCCCC**. A complement of this color would be **11322584**, and the grayscale version is **12961221**.

A 20% lighter version of the original color is **16775395**, and **10587000** is the 20% darker color. If you saturate the color by 10%, you get **14202006**, and if you desaturate by 10%, it is **14208194**.

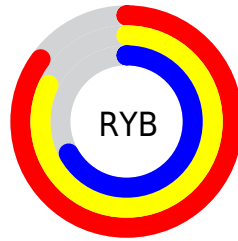
Distribution



Red (85%)

Green (75%)

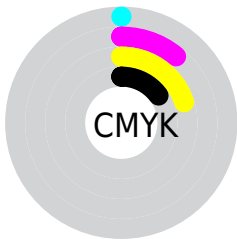
Blue (67%)



Red (85%)

Yellow (82%)

Blue (67%)

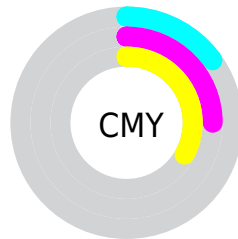


Cyan (0%)

Magenta (11%)

Yellow (20%)

Black (15%)



Cyan (15%)

Magenta (25%)

Yellow (33%)

Brightness & Saturation Gradients

These gradients show how the Decimal color 14205100 changes by changing the brightness by 10 percent. The first figure shows a shift by +10% for each color and the second figure -10%.

Similar to the brightness gradients but the following saturation gradients show a change of the Decimal color 14205100 by changing the saturation by 10% instead.

 14205100

 14205100


16777215

 12363153

 16775395

 10587000

 8810847

 7166279

 5521713

 3943196

 2496258

 327680

 0

 14205100

 14205100

 14202006

 14208194

 14198913

 14211287

 14196075

 14214125

 14192982

 14217215

 14189888

 14220287

 14186794

 14221311

 14183957

 14180864

Harmonies

Analogous

The Analogous color harmony consists of three colors that are next to each other on the color wheel.



14663092



14205100



13354154

Triad

The Triadic color harmony groups three colors that are evenly spaced from another and form a triangle on the color wheel.



14205100



10800327



13353177

Complementary

The Complementary color scheme is a pair of colors which are on the opposite of each other on the color wheel.



14205100



11322584

Split Complementary

Split-complementary colors differ from the complementary color scheme. The scheme consists of three colors, the original color and two neighbors of the complement color.



12240094



14205100



10734548

Square

The Square scheme is like the rectangle color scheme, but the four colors are evenly spaced on the color wheel.



14205100



11455418



11258076



14269646

Rectangle

The Rectangle color scheme consists of four colors that form a rectangle on the color wheel.



14205100



12699565



11258076



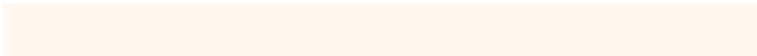
13025755

Sweetspot

The Sweet Spot groups the original color and five complimentary colors.



14205100



16775152



14200004



8420215



0



8421504

Same Dimension

The Same Dimension uses a secret algorithm to generate beautiful new colors.



14205100



16768706



14210732



7038304



11226624



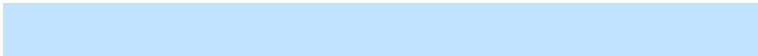
2823168

Inverse Universe

The Inverse Universe completely reimagines the original color for something new.



11322584



12772351



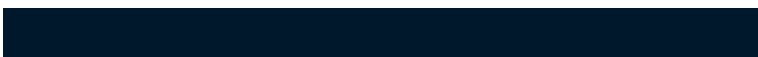
11316952



6317675



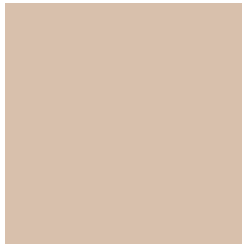
23979



6187

Previews

White Background



This preview shows how the Decimal color 14205100 looks on a white background.

Color Contrast Check

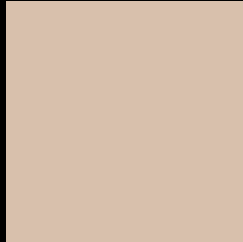
Large Text (above 18pt) WCAG AA × Fail

Any Text WCAG AA × Fail

Large Text (above 18pt) WCAG AAA × Fail

Any Text WCAG AAA × Fail

Black Background



This preview shows how the Decimal color 14205100 looks on a black background.

Color Contrast Check

Large Text (above 18pt) WCAG AA ✓ Pass

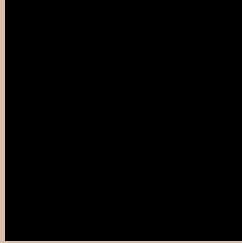
Any Text WCAG AA ✓ Pass

Large Text (above 18pt) WCAG AAA ✓ Pass

Any Text WCAG AAA ✓ Pass

If you want to check with other color combinations, try the [Color Contrast Checker](#).

Decimal 14205100 Background



This preview shows how black text looks on a background with the Decimal color 14205100.



This preview shows how white text looks on a background with the Decimal color 14205100.

Color Blindness Simulation

Color vision deficiency is a very complex topic, and I could not describe the different causes any better than Wikipedia does, so if you want to learn more, you should check out their [article about color blindness](#).

Dichromacy





Tritanopia
14466250

Trichromacy



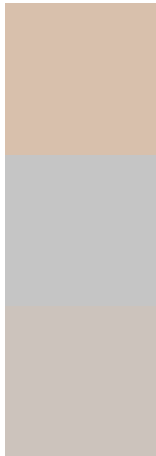
Original Color
14205100

Protanomaly
13747117

Deuteranomaly
14532269

Tritanomaly
14400959

Monochromacy



Original Color
14205100

Achromatopsia
12961221

Achromatomaly
13419452

CSS Examples

Text

The CSS property to change the color of the text to Decimal 14205100 is called "color". The color property can be set on classes, ids or directly on the HTML element.

This example shows how text in the color #D8C0AC looks like.

```
.text, #text, p{  
  color:#D8C0AC  
}
```

If you want to add a text shadow in that color use the text-shadow property, you can generate a text shadow directly with our [CSS Text Shadow Generator](#).

Here you see how black text with a 4 pixel #D8C0AC colored shadow looks like.

```
.shadow{ text-shadow: 4px 4px 2px #D8C0AC }  
}
```

Border

The CSS property to change the border of an element to Decimal 14205100 is called "border". The border property can be set on classes, ids or directly on the HTML element.

This example shows the color as border, it can be applied via the CSS property "border" or "border-color".

```
.border, #border, table{ border:4px solid #D8C0AC }  
}
```

If only the border color should be changed use the property `border-color`.

```
.border{ border-color:#D8C0AC }
```

If you want to add a box shadow in that color use:

Here you see how a box with a 4 pixel #D8C0AC colored shadow looks like.

```
.boxshadow{ -moz-box-shadow:4px 4px 4px  
4px #D8C0AC; -webkit-box-shadow:4px 4px  
4px 4px #D8C0AC; box-shadow:4px 4px 4px  
4px #D8C0AC }
```

Background

The CSS property to change the background color of an element to Decimal 14205100 is called "background". The background property can be set on classes, ids or directly on the HTML element.

```
.background, #background, body{  
background:#D8C0AC }
```

If only the background color should be changed can be used:

```
.background{ background-color:#D8C0AC }
```

This example shows the color as background, it is applied via the CSS property "background".

To optimize and compress your CSS code, you can use our [online CSS compressor and optimizer](#) based on csstidy. If you want to create a linear or radial gradient as background or border, check our [CSS Gradient Generator](#).

Hey! You found this booklet interesting? Support Converting Colors with the new Membership Option!

The pro membership hides all ads, plus gives you double the colors in the color bucket, and more awesome pro features!

[Learn more, Memberships starting at \\$2.50/m!](#)

**Follow me
on Twitter!**

@ConvertingColor