

Converting Colors

Decimal(14205127)

Have a look what the booklet for
Decimal(14205127) contains.

Decimal(14205127)	3
<i>Conversions</i>	4
<i>Details</i>	6
<i>Harmonies</i>	11
<i>Previews</i>	23
<i>Color Blindness Simulation</i>	26
<i>CSS Examples</i>	29

Color

Decimal(14205127)

Conversions

Conversions Part 1

Format	Color
Hex	D8C0C7
RGB	216, 192, 199
RGB Percent	85%, 75%, 78%
CMY	0.1529, 0.2471, 0.2196
CMYK	0.00, 0.11, 0.08, 0.15
HSL	342°, 24%, 80%
HSV	342°, 11%, 85%
XYZ	57.4773, 56.4217, 61.8939
YIQ	199.9740, 12.0570, 7.2650

Conversions

Conversions Part 2

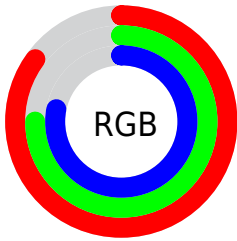
Format	Color
R _Y B	216, 192, 199
Decimal	14205127
CIE Lab	79.85, 9.66, -0.41
CIE LCh	80, 9.669, 357.560
Yxy	56.4217, 0.3270, 0.3210
Android (android.graphics.Color)	4292395207 (0xFFD8C0C7)
YUV	199.9740, -0.4802, 14.0548
Hunter-Lab	75.1144, 5.1375, 3.7254

Details

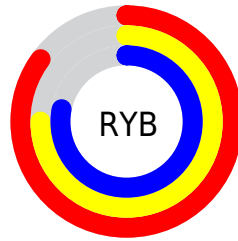
The Decimal color **14205127** is a light color, and the websafe version is hex **CCCCCC**. A complement of this color would be **12638417**, and the grayscale version is **13158600**.

A 20% lighter version of the original color is **16775423**, and **10587025** is the 20% darker color. If you saturate the color by 10%, you get **14199480**, and if you desaturate by 10%, it is **14210774**.

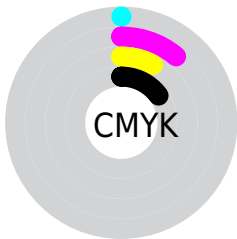
Distribution



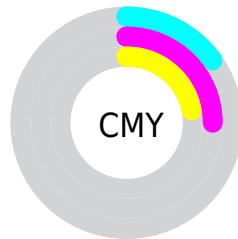
- Red (85%)
- Green (75%)
- Blue (78%)



- Red (85%)
- Yellow (75%)
- Blue (78%)



- Cyan (0%)
- Magenta (11%)
- Yellow (8%)
- Black (15%)



- Cyan (15%)
- Magenta (25%)
- Yellow (22%)

Brightness & Saturation Gradients

These gradients show how the Decimal color 14205127 changes by changing the brightness by 10 percent. The first figure shows a shift by +10% for each color and the second figure -10%.

Similar to the brightness gradients but the following saturation gradients show a change of the Decimal color 14205127 by changing the saturation by 10% instead.

 14205127	 14205127
16777215	 12363180
 16775423	 10587025
	 8876408
	 7166303
	 5587271
	 4008753
	 2561564
	 1310721
	 0

 14205127

 14205127

 14199480

 14210774

 14194088

 14216166

 14188441

 14221301

 14183050

 14221311

 14177403

 14171755

 14166364

 14160717

 14155839

Harmonies

Analogous

The Analogous color harmony consists of three colors that are next to each other on the color wheel.



13746640



14205127



14336190

Triad

The Triadic color harmony groups three colors that are evenly spaced from another and form a triangle on the color wheel.



14205127



12896438



11782869

Complementary

The Complementary color scheme is a pair of colors which are on the opposite of each other on the color wheel.



14205127



12638417

Split Complementary

Split-complementary colors differ from the complementary color scheme. The scheme consists of three colors, the original color and two neighbors of the complement color.



11586510



14205127



12241596

Square

The Square scheme is like the rectangle color scheme, but the four colors are evenly spaced on the color wheel.



14205127



13551028



11717573



12371928

Rectangle

The Rectangle color scheme consists of four colors that form a rectangle on the color wheel.



14205127



14205369



11717573



11651795

Sweetspot

The Sweet Spot groups the original color and five complimentary colors.



14205127



16775162



13746392



8419964



0



8421504

Same Dimension

The Same Dimension uses a secret algorithm to generate beautiful new colors.



14205127



16768744



14206400



7037028



11206706



2818061

Inverse Universe

The Inverse Universe completely reimagines the original color for something new.



14205127



16768744



12637144



7037028



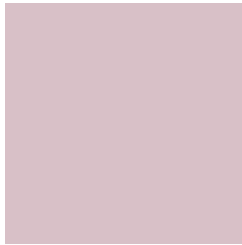
11206706



2818061

Previews

White Background



This preview shows how the Decimal color 14205127 looks on a white background.

Color Contrast Check

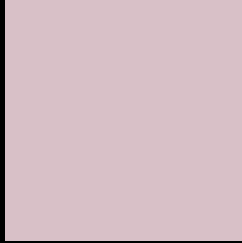
Large Text (above 18pt) WCAG AA × Fail

Any Text WCAG AA × Fail

Large Text (above 18pt) WCAG AAA × Fail

Any Text WCAG AAA × Fail

Black Background



This preview shows how the Decimal color 14205127 looks on a black background.

Color Contrast Check

Large Text (above 18pt) WCAG AA ✓ Pass

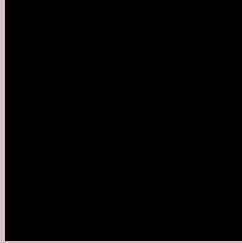
Any Text WCAG AA ✓ Pass

Large Text (above 18pt) WCAG AAA ✓ Pass

Any Text WCAG AAA ✓ Pass

If you want to check with other color combinations, try the [Color Contrast Checker](#).

Decimal 14205127 Background



This preview shows how black text looks on a background with the Decimal color 14205127.



This preview shows how white text looks on a background with the Decimal color 14205127.

Color Blindness Simulation

Color vision deficiency is a very complex topic, and I could not describe the different causes any better than Wikipedia does, so if you want to learn more, you should check out their [article about color blindness](#).

Dichromacy



Original Color
14205127

Protanopia
13157834

Deuteranopia
14270663



Tritanopia
14270414

Trichromacy



Original Color
14205127

Protanomaly
13550537

Deuteranomaly
14270663

Tritanomaly
14270411

Monochromacy



Original Color
14205127

Achromatopsia
13158600

Achromatomaly
13551048

CSS Examples

Text

The CSS property to change the color of the text to Decimal 14205127 is called "color". The color property can be set on classes, ids or directly on the HTML element.

This example shows how text in the color #D8C0C7 looks like.

```
.text, #text, p{  
    color:#D8C0C7  
}
```

If you want to add a text shadow in that color use the text-shadow property, you can generate a text shadow directly with our [CSS Text Shadow Generator](#).

Here you see how black text with a 4 pixel #D8C0C7 colored shadow looks like.

```
.shadow{ text-shadow: 4px 4px 2px #D8C0C7  
}
```

Border

The CSS property to change the border of an element to Decimal 14205127 is called "border". The border property can be set on classes, ids or directly on the HTML element.

This example shows the color as border, it can be applied via the CSS property "border" or "border-color".

```
.border, #border, table{ border:4px solid  
#D8C0C7 }
```

If only the border color should be changed use the property `border-color`.

```
.border{ border-color:#D8C0C7 }
```

If you want to add a box shadow in that color use:

Here you see how a box with a 4 pixel #D8C0C7 colored shadow looks like.

```
.boxshadow{ -moz-box-shadow:4px 4px 4px  
4px #D8C0C7; -webkit-box-shadow:4px 4px  
4px 4px #D8C0C7; box-shadow:4px 4px 4px  
4px #D8C0C7 }
```

Background

The CSS property to change the background color of an element to Decimal 14205127 is called "background". The background property can be set on classes, ids or directly on the HTML element.

```
.background, #background, body{  
background:#D8C0C7 }
```

If only the background color should be changed can be used:

```
.background{ background-color:#D8C0C7 }
```

This example shows the color as background, it is applied via the CSS property "background".

To optimize and compress your CSS code, you can use our [online CSS compressor and optimizer](#) based on csstidy. If you want to create a linear or radial gradient as background or border, check our [CSS Gradient Generator](#).

Hey! You found this booklet interesting? Support Converting Colors with the new Membership Option!

The pro membership hides all ads, plus gives you double the colors in the color bucket, and more awesome pro features!

[Learn more, Memberships starting at \\$2.50/m!](#)

**Follow me
on Twitter!**

@ConvertingColor